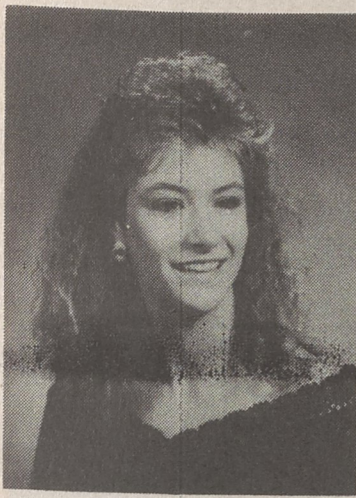
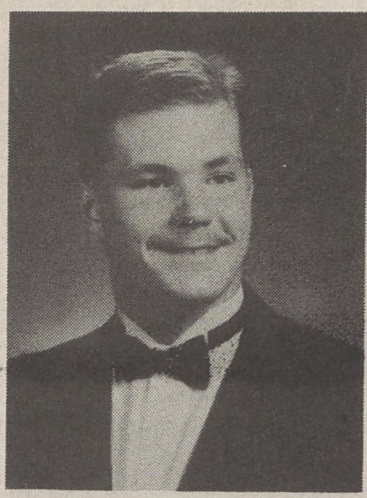


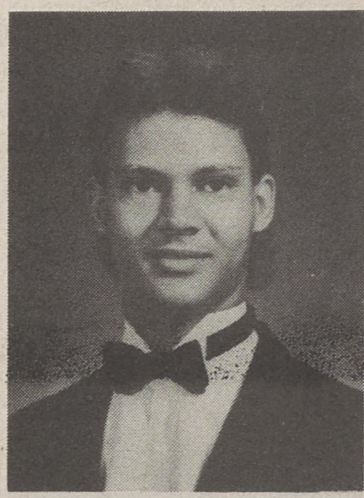
Kings Mountain Senior High School Class Of 1989



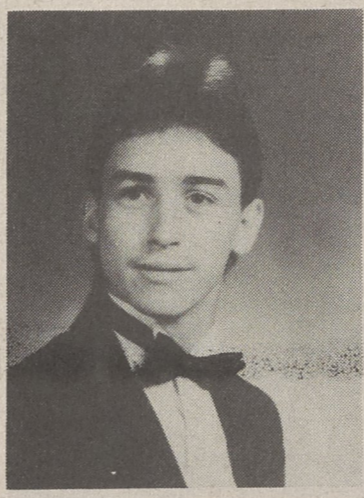
Sandra E. Grant



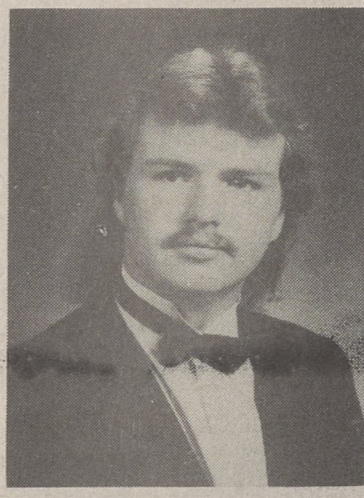
Floyd O. Greene



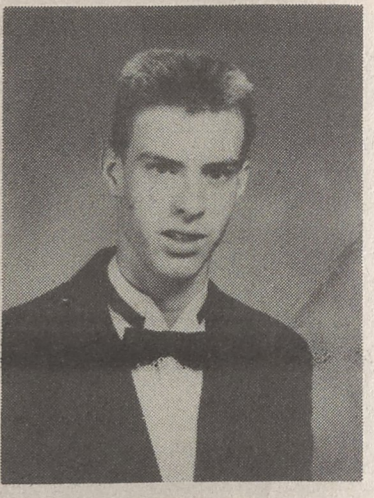
Timothy D. Griffith



Jamie C. Grigg II



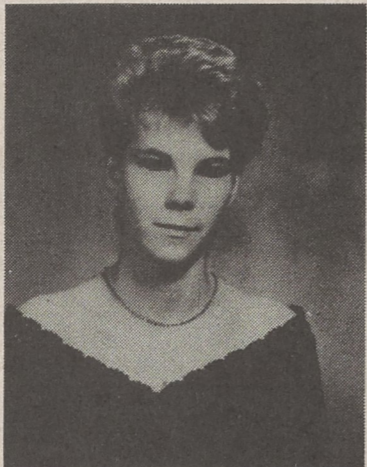
Robert L. Guin



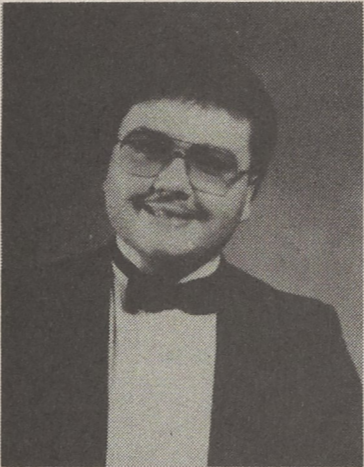
Jeffery A. Guy



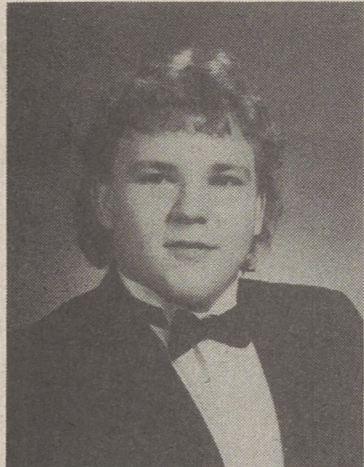
Amanda M. Hambright



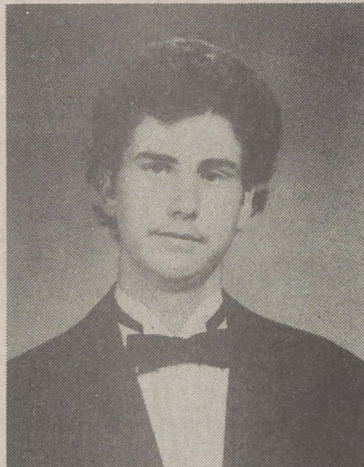
Tabitha L. Hambright



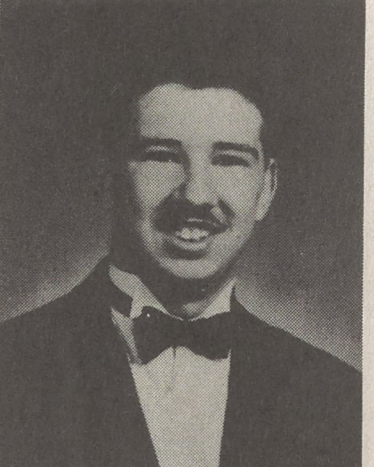
Roy S. Hammett IV



David C. Hamrick



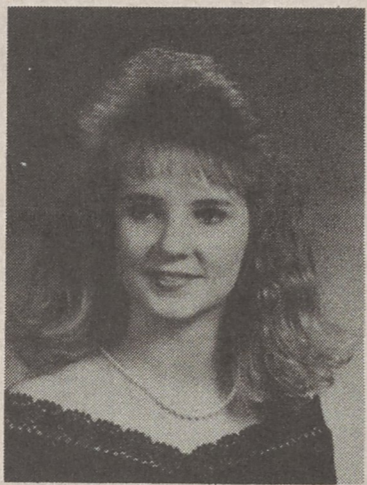
Ernest L. Hamrick



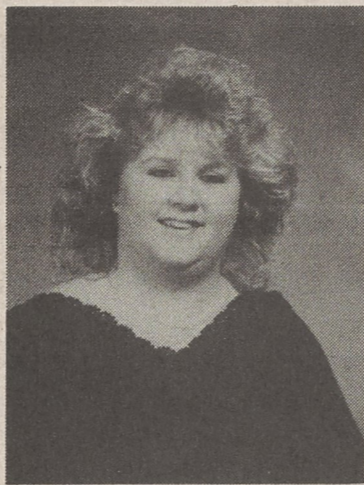
Robert S. Hartley



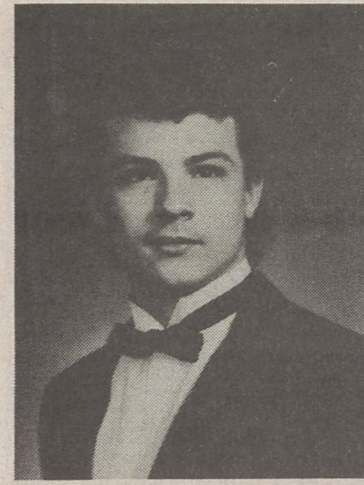
Barbara A. Hawkins



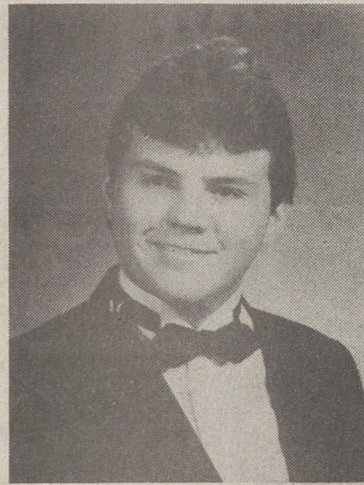
Tonya K. Hawkins



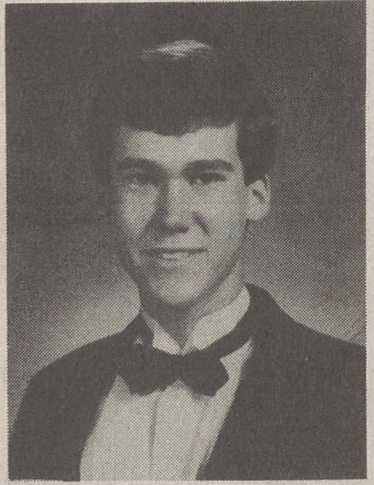
Julie D. Helms



Bradley D. Henderson



Mark A. Henson



Christopher B. Herndon

Gifts for the Grad

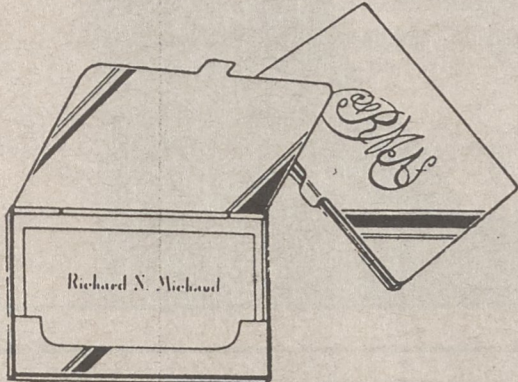
THE PATINA OF PEWTER
Creates a smooth mellow softness of finish to our "on the cuff" bracelets. Initialed or not, they are a stunning addition to any outfit.

Sale
\$7.99



GREAT LITTLE KNIFE™
This six part knife consists of scissors, knife, cuticle pusher, file, screwdriver and tweezers. A handy gift available in stainless steel and a useful vinyl case.

Sale
\$9.75



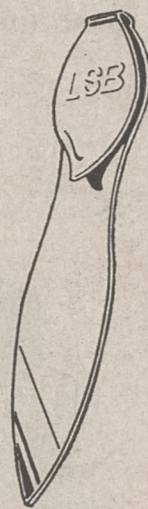
CARD CASE
An ideal personalized gift for him or her. Holds business and credit cards.

Sale
\$7.99

FREE GIFTWRAPPING
Engraving Available At Arnold's
Prices Good While Supplies Last

"BOOKWORM"
Mark a page or open a letter with this exciting combination letter opener bookmark. An ideal gift that personalizes nicely.

Sale
\$7.99



ARNOLD'S Jewelry
226 S. Washington St. • Shelby
487-4521

Plenty of FREE Parking
Beside the Store!
All weights approximate.

Mastercharge, VISA,
American Express, Arnold's
Charge, Lay-A-Way

Low Down
Payments!
Convenient Terms!



Congratulations
**TO
ALL
GRADUATES**

Your hard work and efforts have placed you on a new threshold of opportunity. The best years of your lives are ahead, and we wish you success.

Bank on First National for every money service. We're proud to be the only bank that devotes itself entirely to the progress of Shelby and Cleveland County. It's Your Hometown Bank.



FIRST NATIONAL BANK
MEMBER FDIC

SHELBY, N.C.