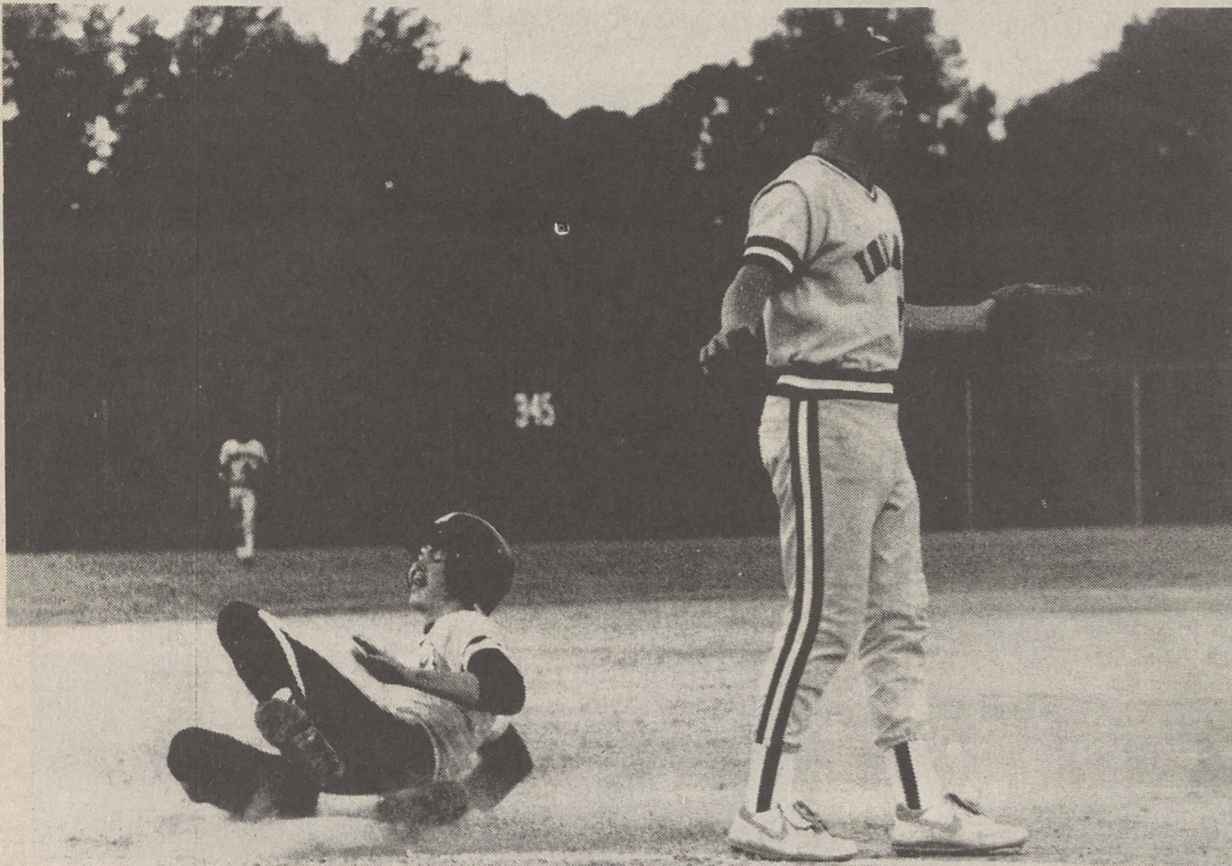


# SPORTS

## Mounties Bomb St. Stephens, Host Owen



**SAFE AT THIRD** - Kings Mountain's Keith Allen slides into third after a passed ball in state 3-A playoff game with St. Stephens Friday night at KM's Lancaster Field. Kings Mountain won 13-1.

Kings Mountain's Mountaineers powered their way into the quarter-finals of the state 3-A baseball playoffs Friday night with a 13-1 victory over St. Stephens at Lancaster Field.

The victory, KM's 19th against seven losses, moved Bruce Clark's charges into the western semi-finals tonight at 7:30 at home against Swannanoa Owen. Owen, which has scored 29 runs in two playoff games, advanced with a 16-6 win over West Henderson.

Clark's Mountaineers will be trying to do something no other Mountaineer team has done when they face Owen, and that is to defeat the War Horses. Owen has won all previous meetings between the two schools but this is their first meeting in baseball.

The winner of tonight's contest will host the winner of the West Caldwell-Statesville game Friday for the western championship and the right to host the eastern champion in a best-of-three state championship series June 7-9. Kings Mountain last played for the state crown in 1980 when the

Mountaineers fell to Greene Central in Snow Hill.

Paul Brannon's 15th homerun of the year, a long blast over the left-center field fence in the first inning, got the Mounties started Friday night. Dale Greene closed out the scoring in the bottom of the sixth with a towering three-run homer over the center field fence.

In between the Mounties were enjoying a consistent hitting attack to back the combined three-hit pitching of Stuart Spires, Todd McDaniel and Keith Allen. McDaniel, who relieved Spires in the fourth inning with KM up 6-1, was the winner.

Kings Mountain put the game away with five runs in the second inning for a 6-0 lead. St. Stephens scored its only run on an error in the top of the fourth, then KM put the finishing touches on the win with seven runs in the bottom of the sixth.

Chris Henson's two-run single sparked the second inning uprising, and the Mountaineers also took advantage of two St. Stephens errors,

three wild pitches and a passed ball.

Chris Bullock's double off the top of the center field fence sparked the seven-inning rally in the sixth. He scored on a double by Chip Cash, then Toby Deaton drove in a run with a single and scored on a double by Henson. Greene's three-run homer which almost cleared the high light pole in dead center field capped the rally and the victory.

St. Stephens, which had ousted Southwestern 3-A Conference champion South Point 5-2 three nights earlier, couldn't get its bats going against the Mountaineers. The Indians' only run was the result of a throwing error on a double play attempt.

### THE LINESCORE

Score by innings: R-H-E  
 SS 000 100 0 1-3-2  
 KM 150 007 x 13-11-1  
 Spencer, Helton (2), Brendle (3), Christopher (6) and Propst, Lail (3), Spires, McDaniel (4), Allen (7) and Crook.

## Dale Greene, Chad Plonk Chosen For State Games

Dale Greene and Chad Plonk of Kings Mountain have been selected to participate on the Region 6 all-star team in the annual North Carolina State Games which will begin June 23 in the Raleigh-Chapel Hill area.

Both are members of the Kings Mountain High School team which is currently involved in the State 3-A playoffs. Greene is the starting third baseman and Plonk, who is presently nursing an injury, is the designated hitter. Both are hitting over .400.

"It is quite an honor for both young men to be selected to play in such an outstanding event," said KMHS Coach Bruce Clark. "We and the community of Kings Mountain should be very proud to be represented in this way. I would personally like to thank these young men for allowing me the opportunity to coach them. Without them our success this year would have been limited."

Each player will be required to pay about \$100 which will cover registration fees, meals, jerseys, undershirts, and other necessities. Anyone interested in helping finance their trip may call Coach Clark at the high school.

The state is broken into several regions and the regional all-star teams play each other for medals in the games at Chapel Hill. Players are selected upon recommendations of coaches in the different regions.

Coaches of the region six all-star team will be head coach Marty Stamey of Northwest Cabarrus High School, and assistants Pete Kritzer of Parkwood, Ron Bolick of East Lincoln and Bruce Coltrane of East Mecklenburg.

Coaches of the region six all-star team will be head coach Marty Stamey of Northwest Cabarrus High School, and assistants Pete Kritzer of Parkwood, Ron Bolick of East Lincoln and Bruce Coltrane of East Mecklenburg.

## Track And Field Series To Begin At High School

The Kings Mountain Recreation Department will sponsor a track and field summer series June 6, 13, 20 and 27, July 11, 18 and 25 and August 1 at John Gamble Stadium.

Registration is from 5-6 p.m. on the day of the event and is \$1 for all events.

Awards will be given to the highest point scorers for the series and ribbons will be given to the

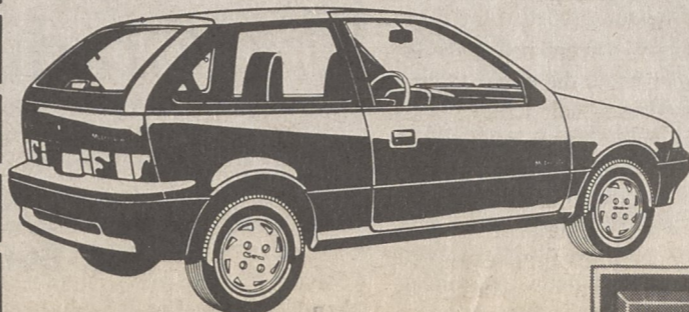
weekly winners. The events are open to anyone age five and older.

There will be competition in long jump, triple jump, 50 meter run, 100 meter run, 200 meter run, 400 meter run, 800 meter run, 1600 meter run, 3200 meter relay, 400 meter relay and 1600 meter relay.

For more information, call the Recreation Department.

# CARTER GEO IMPORTS

It's Brand New. It's Affordale, It's Here, Carter Geo Imports.



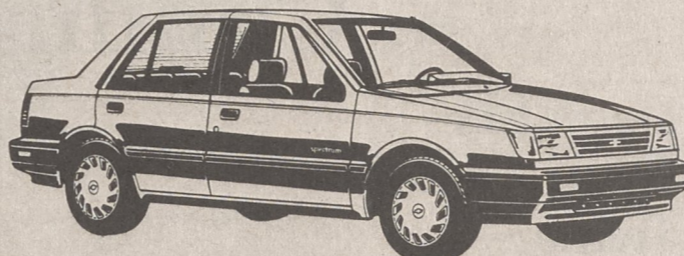
### 1989 METRO

**FRESH APPEARANCE**  
 Aerodynamic grille. Distinctive hood, fenders, quarter panels, taillamps.

**COMFORTABLE, ATTRACTIVE, FUNCTIONAL INTERIOR**  
 High-back vinyl and cloth bucket seats. (Metro Hatchback 3-Door). Instrument panel swept into door trim panel. Rear seat tether anchors for child safety seat. Molded pockets on driver door. Expansive glass area.

**THOUGHTFUL DESIGN**  
 Low liftover height for easy cargo loading. Headlamps-on alert indicator. Roomy interior space.

**ECONOMICAL PERFORMANCE**  
 Electronic fuel injection. 5-speed manual transmission. Highest fuel economy ratings in America (53 MPH city/58 MPH highway).

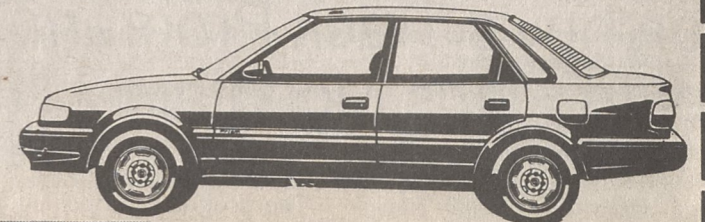


### 1989 SPECTRUM

**CONTEMPORARY APPEARANCE**  
 Newly designed radiator grille. Wraparound front and rear bumper. Formal roofline in sedan models. European flair with Japanese economy.

**THOUGHTFUL, ROOMY INTERIOR**  
 Conveniently grouped instrumentation. Almost 30 cubic feet of cargo space with rear seat folded (hatchback). 11.4 cubic-foot trunk (sedan) opens at bumper level for easy loading. Fully carpeted load floor.

**EXCITING PERFORMANCE**  
 1.5-liter 4-cylinder engine. 5-speed manual transmission (standard). 3-speed automatic transmission available. Rack and pinion steering. All-season, steel-belted radial tires. Excellent maneuverability. Power-assisted front disc/rear drum brakes.

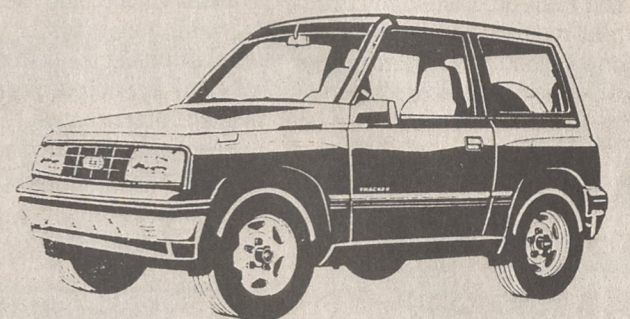


### 1990 PRIZM

**CONTEMPORARY APPEARANCE**  
 Quality and prestige look. Looks larger than it is. Aerodynamic style — a new feeling of roundness. One-piece wraparound bumpers. Distinctive grille. Flush-mounted tinted windshield and back-light. Bumper-level opening decklid and liftgate.

**COMFORTABLE, ATTRACTIVE, FUNCTIONAL INTERIOR!**  
 Low-back cloth reclining front bucket seats. 60/40 split flat folding rear set (hatchbacks). Convenient center console. Slide-out cup holder.

**PERFORMANCE AND ECONOMY**  
 1.6 liter 4-cylinder engine. 16-valve design. Dual overhead cam. Electronic port fuel injection. 5-speed manual transmission. Rear stabilizer bar.



### 1990 TRACKER

**SPORTY APPEARANCE**  
 Composite headlamps. Body-color soft bumper fascia black rub strips with red accent stripe. Matching body-side moldings. Body-color outside rearview mirrors. Blackout-treatment bodyside upper.


**COMFORTABLE, SPORTY INTERIOR**  
 Fully reclining front bucket seats. Two-passenger folding rear bench seats. Side window defoggers. Center and outboard ventilation outlets. Console with package tray.

**ON/OFF ROAD PERFORMANCE**  
 1.6-liter 1.4 engine. 5-speed manual transmission. (Tracker and Tracker Convertible). 2-speed transfer case. Manual-locking front hubs for 2WD or 4WD. Full frame with MacPherson strut front suspension. Dual trailing arm rear suspension with rigid axle. Limited Availability.

**Everything You Want In Farm Equipment ...And More.**

**0.0% A.P.R.**

**FOR 12-MONTH FINANCING.**




- FORD AG AND INDUSTRIAL TRACTORS
- NEW HOLLAND EQUIPMENT

All at the low finance rate of 0.0%. Need longer terms? Ask us about our other attractive finance plans. Offer good until June 30, 1989. Available exclusively through Ford Credit for qualified buyers.

**Ford Credit**

**PARKER FARM SERVICE**  
 HWY. 74 BYPASS-SHELBY, N.C.  
**482-7061**



# CARTER GEO IMPORTS

Ray Walker  
 Rick Philbeck  
 Joe Hamrick  
 Thomas Hester

Mark Carter  
 Mark Johnson  
 Morris Ramsaur  
 Carl Bell

200 WEST DIXON BLVD., SHELBY 482-4341

**Special Introduction Offer**

AS LOW AS **2.9%** APR OR **\$400<sup>00</sup> CASH BACK**

Metro, Spectrum, Prizm