

# PAYMENTS FOR YOU . . . . .

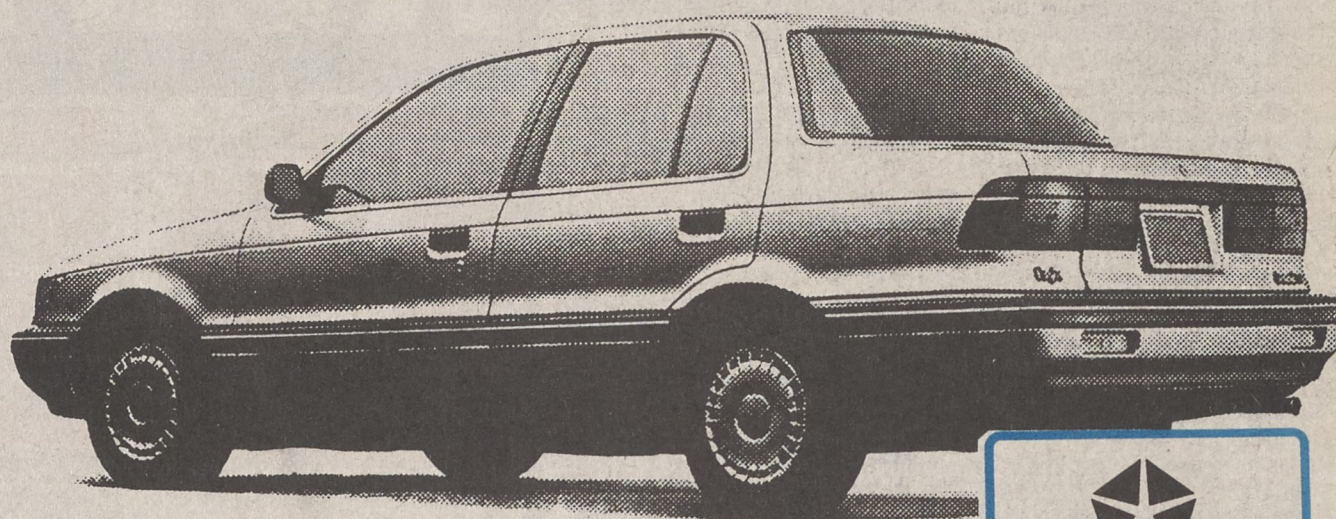
## The 1989 EAGLE SUMMIT

**\$195.94** PER MONTH

LIST PRICE ..... \$ 11,580.<sup>00</sup>  
 TESTA REBATE ..... 1,087.<sup>75</sup>  
 CASH OR TRADE ..... 1,500.<sup>00</sup>

**\$ 8,992.<sup>25</sup>**

FINANCED AT 10.9 APR FOR 60 MOS. - STOCK # F144



**Bumper to Bumper 3 Year,  
36,000 Mile Warranty**

**OR \$500.00 FACTORY REBATE . . . . .**

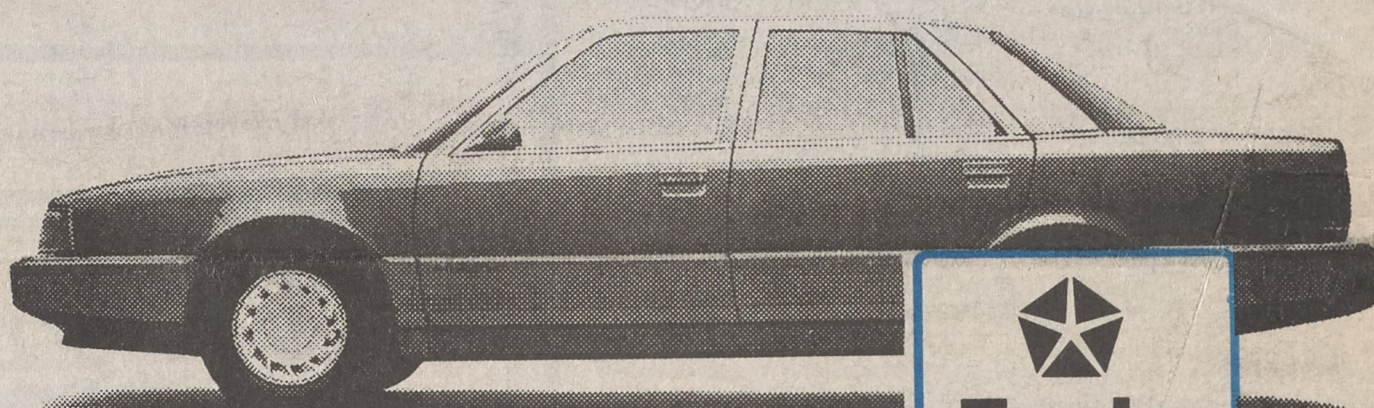
## The 1989 EAGLE PREMIER

**\$264.59** PER MONTH

LIST PRICE ..... \$ 15,815.<sup>00</sup>  
 TESTA REBATE ..... 2,172.<sup>35</sup>  
 CASH OR TRADE ..... 1,500.<sup>00</sup>

**\$ 12,142.<sup>65</sup>**

FINANCED AT 10.9 APR FOR 60 MOS. - STOCK # F096



PRODUCTS FROM  
CHRYSLER

**7 Year-70,000 Mile Warranty  
"It's called Premier,  
because there's nothing else like it."**

**OR \$750.00 FACTORY REBATE . . . . .**

## The 1989 JEEP CHEROKEE

**\$330.94** PER MONTH

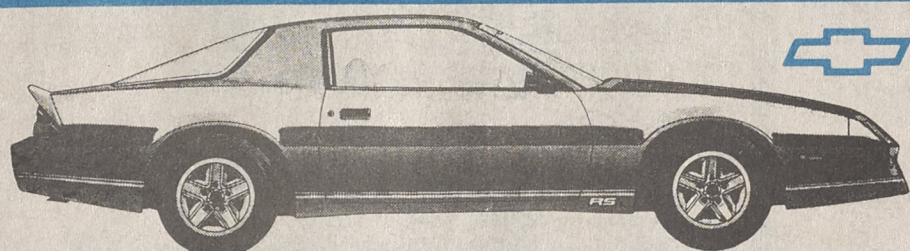
LIST PRICE ..... \$ 18,418.<sup>00</sup>  
 TESTA REBATE ..... 2,079.<sup>18</sup>  
 CASH OR TRADE ..... 1,500.<sup>00</sup>

**\$ 14,838.<sup>82</sup>**

FINANCED AT 11.9 APR FOR 60 MOS. - STOCK # F143



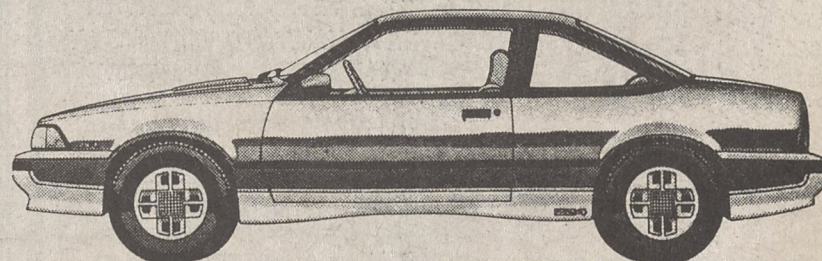
**OR \$1000.00 FACTORY REBATE . . . . .**



LARGE INVENTORY OF

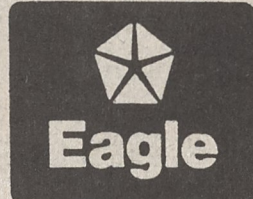
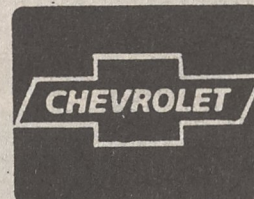
**CHEVROLET™**

- CAMARO's
- CAVALIER Z-24's



# JIM TESTA

**HWY 161 at I-85  
KINGS MOUNTAIN • 739-5471**



MONDAY THRU FRIDAY, 8:00 AM-8:00 PM  
 SATURDAYS, 8:00 AM-5:00 PM  
 SUNDAYS, 1:00-5:00 PM