

Splashdown Set For Saturday

Kings Mountain area citizens will be swimming for fun and pledges for cash to buy bleachers for the new Neisler Natatorium and for community projects supported by Kings Mountain Kiwanis Club Saturday from 9 a.m. until noon at KM Indoor Pool.

The event is free and open to the public. The fund-raiser is sponsored by Sharks Aquatics and the Kiwanis Club.

Sharks are trying to raise at least \$6,000 for bleachers.

Splashdown '89-as the big event is called-will feature swimmers and non-swimmers who will be racing for the finish line to collect pledges they have made with friends. Floats, swimmies and kickboards may be used.

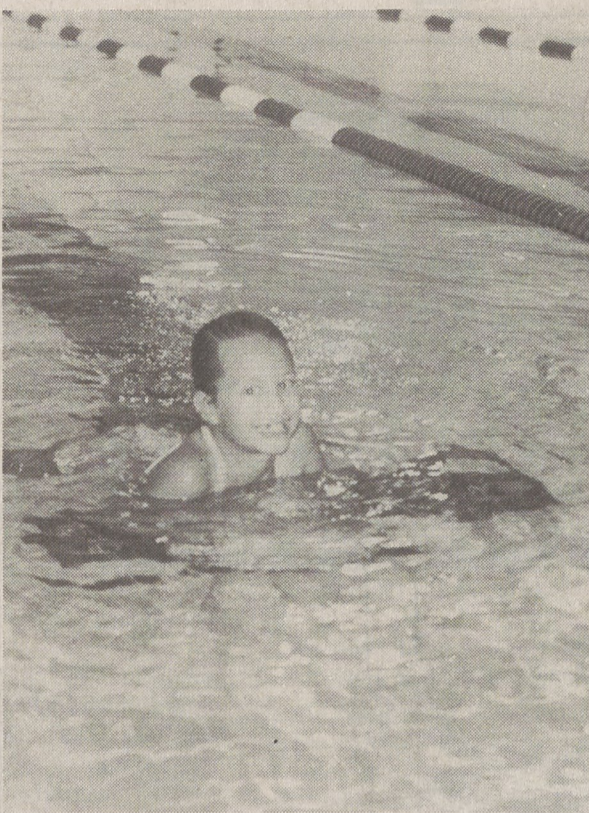
The list of participants includes father-daughter teams, father-son teams, Kiwanis members who are pairing up against teachers, doctors, and coaches and swimmers and non-swimmers of all ages.

Among those who have signed up to participate in the event are Grady K. Howard and his son, Dr. Grady Howard Jr.; Soccer Coach Dan Potter, Dr. Scott Mayse, Larry Hamrick Jr., David Faunce, Gene White, Bill Moss, Ronnie Hawkins, Claudia Grissom, Sylvia Neisler, David Neisler, David and Christie Brinkley, Jeff and Elizabeth Mauney, Tom Tate, Glee Bridges, Jerry Ledford, KMSHS Swim Coach Gordon Edwards and many more, in addition to members of Sharks Aquatics.

Mrs. Sarah Mayse is accepting sign-up sheets this week. You don't have to participate in the swim meets to make pledges or give a donation, she points out.

Donations are tax-deductible and checks should be made to Sharks Aquatics Club or Kings Mountain Kiwanis Club.

For those who participate in lap swims at the pool,



Wendy Neisler
...Taking A Swim At Pool

the schedule has been changed. Lap swims at KM Indoor Pool are scheduled from 6 to 7:30 a.m., 11:30 to 12:30 and 5 to 7 p.m. Mondays through Fridays and on Saturdays from 12 to 2 p.m. and on Sundays from 1 to 3 p.m.

EKGs Detect Problems

By DENISE SOBIERAJ

At Kings Mountain Hospital, the EKG department gets to the heart of the problem. Tests performed through the EKG department focus on the heart to detect possible abnormalities and help physicians with their diagnosis.

Kathy Brooks of the EKG department performs four different tests including EKGs, stress tests, 24-hour Holter monitoring and EEGs. Mrs. Brooks who has been working at Kings Mountain Hospital for almost a year said, "I love my job. The heart has always fascinated me."

Every person's heart has its own rhythm or beat. An EKG, or electrocardiogram, is a tracing of the heart beat. To perform an EKG, ten leads are connected to patient on different areas of the body. Every time the heart beats, it sends out an electrical impulse to the stylus which records it on paper. The resulting image allows a physician to see how the heart is functioning by the beats it is putting out. The procedure is noninvasive and is painless. The EKG machine is portable

and can be used throughout the entire hospital.

An EKG reading reveals damage to heart from previous heart attacks and helps detect blockage in arteries. However, an EKG cannot predict heart attacks.

Having an EKG is a standard procedure before major surgery. Mrs. Brooks said, "You wouldn't want to go into surgery without knowing if some little thing was wrong with your heart."

A physician might request that a patient has an EKG performed because the patient is experiencing chest pains, left arm pain, having difficulty breathing or persistent heartburn or indigestion, which are all signs of heart problems. In addition, people with a family history of heart problems should consider having an EKG done so they can have a normal EKG reading in their records to compare with any EKG readings they may have in the future.

Twenty-four hour Holter monitoring is like a 24-hour EKG. A 24-hour Holter monitoring is per-



KATHY BROOKS

formed because sometimes heart problems are only evident during physical activity.

See EKG, Page 11A

Concert Set At Barnes Auditorium

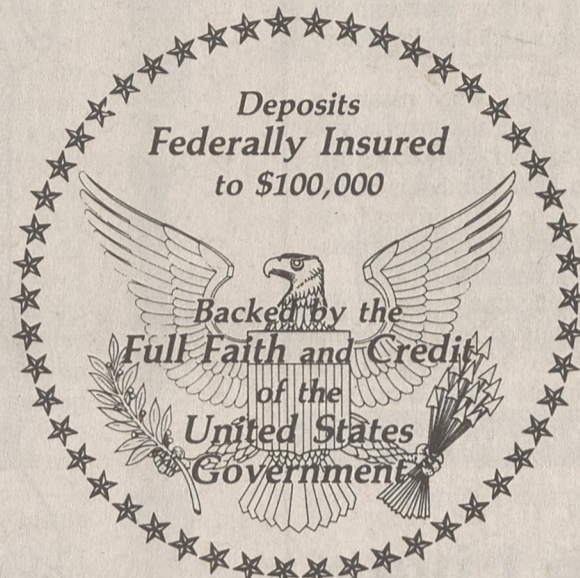
A big gospel concert featuring Singing Americans from Maiden and The Sound from Houston,

Texas will be held Aug. 31 at 7:30 p.m. at Barnes Auditorium. No admission will be charged. A

love offering will be received. The public is invited to hear the popular gospel groups.

INTRODUCING

Your New Symbol of Savings Security



The symbol may have changed, but your savings remain safe . . . absolutely, positively, totally safe.

What the President said . . .

"We will see — guarantee — that your insured deposits are secure . . . The new seal displayed here symbolizes . . . our commitment to protecting depositors."

President George Bush at the Savings and Loan signing ceremony, Wednesday, August 9, 1989.

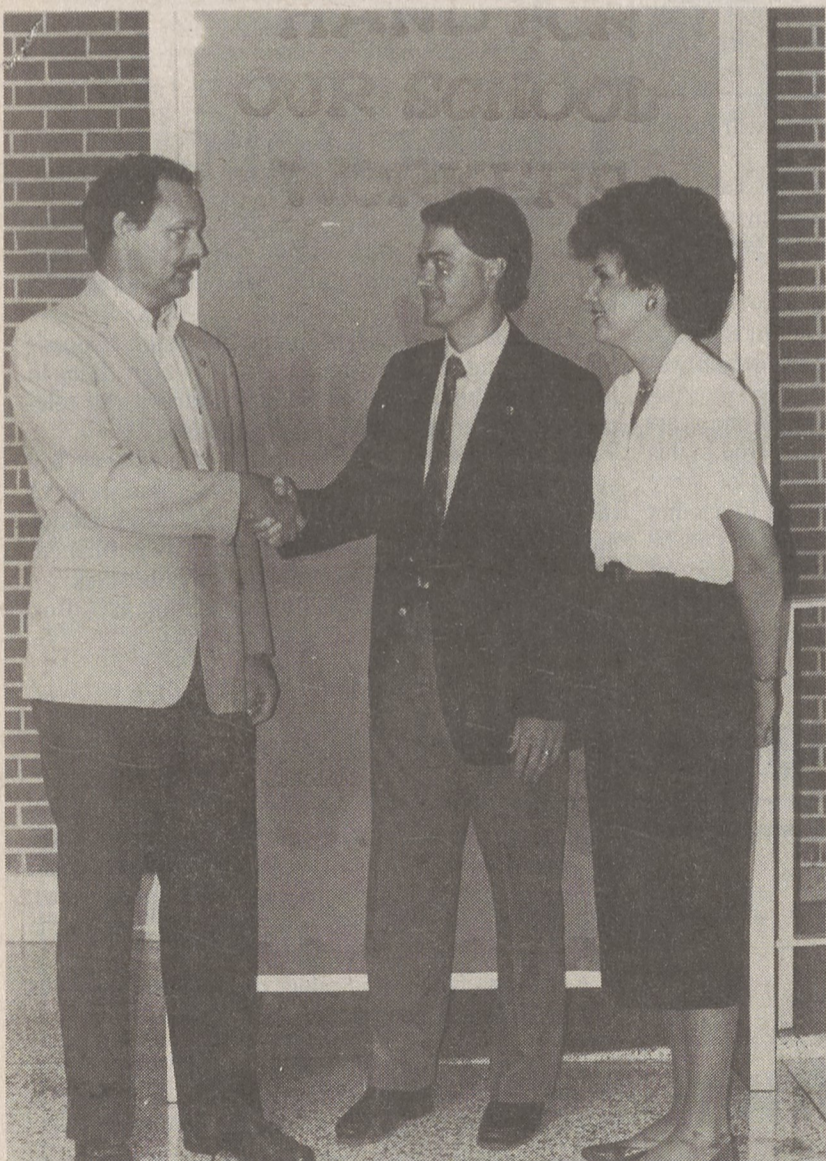
FIRST FEDERAL SAVINGS & LOAN ASSOCIATION

Established 1907

Kings Mountain
300 W. Mountain St.
P.O. Box 746
Kings Mountain, NC 28086
(704) 739-4781



Shelby
1238 E. Dixon Blvd.
P.O. Box 820
Shelby, NC 28150
(704) 484-0222



STALLINGS HONORED-Dr. Martin Stallings, left, was honored by his wife, right, with a fellowship to help tutor exceptional children at North School. North Principal Joey Hopper, center, accepts the gift. Mrs. Stallings honored her husband, a volunteer at the school, with the gift Tuesday on their wedding anniversary.

Stallings Fellowship Will Assist North Students

In recognition of the wedding anniversary of Martin W. Stallings and Denese R. Stallings, Mrs. Stallings has established a fellowship in honor of her husband to help tutor exceptional children.

Each week during the school year Dr. Stallings takes time to go

to North School to tutor exceptional children.

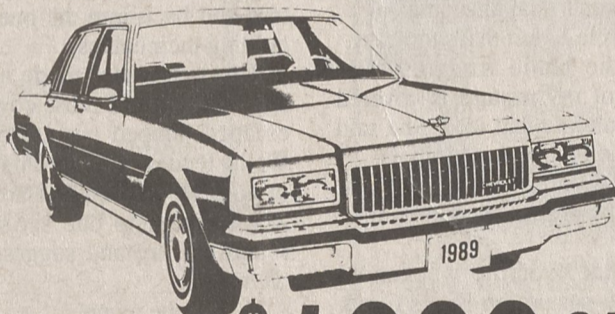
The Dr. Martin W. Stallings Fellowship will allow students at North School to receive assistance as needed, by paying for tutors either during the school year or in the summer.

McCutcheon's

'89 FINAL CLEANUP

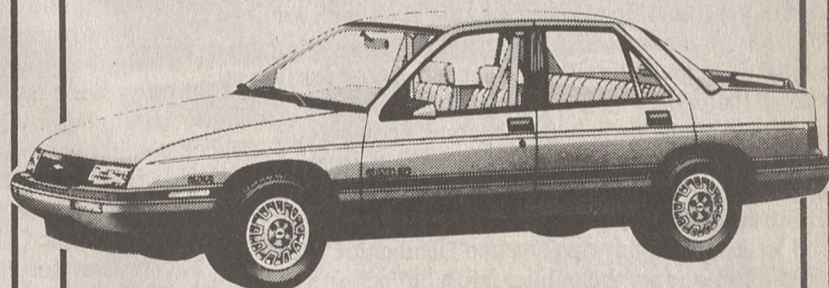
Mop Up On Great Savings NOW!!!

1989 CAPRICE



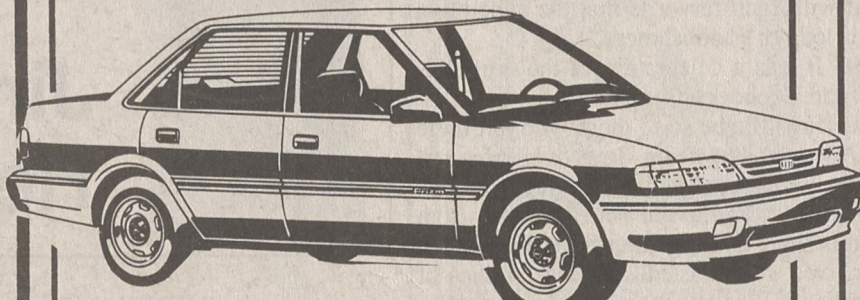
LOW OR \$1000 CASH A.P.R. BACK

1989 CORSICA



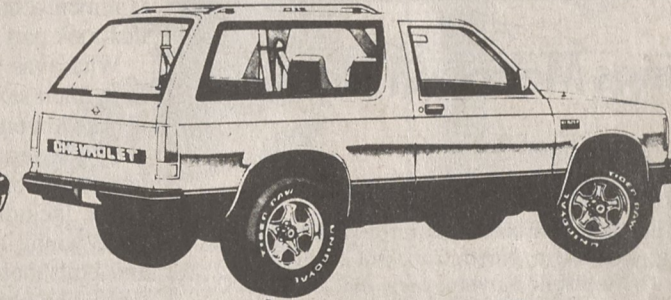
LOW OR \$1000 CASH A.P.R. BACK

1990 PRIZM



LOW OR \$800 CASH A.P.R. BACK

1989 S-10 BLAZER



LOW OR \$750 CASH A.P.R. BACK

McCUTCHEON

CHEVROLET ♦ GEO

HIGHWAY 150 EAST • CHERRYVILLE N.C.

A Member Of The



435-3277