

ERIC DOVER

Eric Dover Who's Who

Ronald Eric Dover has been named to Who's Who Among American High School Students for 1988-89.

A 1989 graduate of Bessemer City High School, Dover is a freshman at Appalachian State University.

He is the son of Ron and Gale Dover of Bessemer City and grandson of Mr. and Mrs. John Clark Jr. of Bessemer City and Mr. and Mrs. James V. Dover of Kings Mountain.

Who's Who, published by Educational Communications Inc., Lake Forest, Ill., is the largest high school recognition publication in the country. Students are selected by high school principals and guidance counselors, national youth groups, churches or by the publishing company based upon students' performance in scholarship award contests or extra-curricular activities.

Final selection is determined on the basis of criteria which include high achievement in academics and leadership in school activities, athletics or community service. Traditionally, 99 percent of Who's Who students have a grade point average of "B" or better and 97 percent are college bound.

The 23rd edition of Who's Who, published in 12 regional volumes, featured 584,800 students, or five percent of the nation's 12 million high school students. They represent 18,000 of the 22,000 public, private, and parochial high schools in the country.

Who's Who students also compete for over \$65,000 in scholarship awards and participate in the publication's annual opinion poll of teen attitudes. The book is distributed on a complimentary basis to over 15,000 high schools, colleges, universities, and public libraries throughout the country.

Pay Tax To Avoid Penalty

Lines are long at the Cleveland County Tax Office in Shelby as property owners try to beat the Dec. 31, 1989 deadline to claim their county tax payments as a deduction on their 1989 federal income tax returns.

Tax Collector Mary Laughlin reminds that payments must be post-marked by Dec. 31, and that payment of all 1989 taxes are due by 5 p.m. Jan. 5, 1990. Any tax bill that is paid after that time is subject to 2 percent interest for the month of January and three quarter of a percent for every month it is unpaid after that.

Since the tax collector's office was closed on Monday, Dec. 26 and will be closed on New Year's Day Monday, Jan. 1, the lines next week are expected to be even longer, said Laughlin.

Many Cleveland County individuals have already paid their 1989 property taxes but payment by large industry has been slow. During August only five of the county's top 15 large taxpayers had paid. Laughlin estimated that 25 percent of the county's tax bills by individuals have been paid. In 1988 the percentage of collections was 99.70 percent but last year collections at year end was 84.23 percent. This year tax officials are estimating collections will be in the low 80's.

The Shelby tax office also collects property taxes of city municipalities, including Kings Mountain, Grover, Shelby, Boiling Springs and Lattimore.

Laughlin reminds that this year advertising of unpaid taxes will begin in March, instead of May, which means that those who don't want their names listed in the newspapers should pay property taxes on time. This means Cleveland county will initiate legal

See Taxes, 13-A

Kings Mountain Citizens Prepare For A New Year

As the strains of 'Auld Lang Syne' signal the end of one year and the beginning of another, Kings Mountain area citizens will greet New Year 1990 Sunday at midnight.

Watch Night services are set by some church congregations. Semi-private and private parties are planned.

Eighteen performing artists and six visual artists will headline Cleveland County Arts Council's gala New Year's eve celebration, Carillon.

All events are indoors including the finale DG dance in the old Roses building in uptown Shelby. Admission is \$3 for adults and \$1 for children under 12. Ticket headquarters will be Cleveland Chamber of Commerce. Advance tickets are available locally at McGinnis Department Store.

Among local groups performing will be the Kings Mountain Little Theater and the Kings Revue from Kings Mountain High School. Gene Bumgardner will direct this polished, touring choir in exciting musical selections presented with style and flair. A selection from their upcoming production of "The New Odd Couple" will foreshadow to the audience the fun in store in this hilarious comedy being presented by Little Theater players.

A wide variety of talent will be presented by Cleveland County performers, including Cecilia Music Club, Slightly Off Center Stage Players, artist Kyrin Packard, jazz pianist Allen Youngblood, Burns High Jazz Ensemble, Hoy-Toy the Magician, Cleveland County Choral Society, storyteller Evelyn Cumberlander, Crest High Choral Ensemble, the 60-voice choir of Lawndale First Baptist Church, Crest

High Choral Ensemble, Shelby Scottish Country Dancers, hammered dulcimer John Mason, flutists Mark and Ann Rose, Mass Handbell Choir representing handbell choirs from four area churches-Shelby Presbyterian, Central United Methodist of Kings Mountain, First Baptist of Shelby and Aldersgate Methodist and DJ Jim Triplett from TNT-The Wall-who boasts one of the largest mobile sound and light shows in the Southeast. Expect a dynamite show from this top flight performer. Big screen videos will be on hand to tie the Cleveland County celebration to the midnight countdown in Times Square in New York and in the Queen City of Charlotte.

The family-oriented New Year's Eve observance is presented by the Cleveland County Arts Society and the Shelby Star.

Locations of performances are at First Baptist Church, Central United Methodist Church Fellowship Hall, BB&T lobby, Cleveland Federal Savings & Loan, Cleveland County Historical Museum, the Courtroom, and the former Roses Building, all in Shelby. The dance finale will be held from 10:30 p.m. until 1 a.m. Monday. The local Little Theater will perform from 10 to 10:30 p.m. in the courtroom, the Kings Revue will perform from 10 until 10:30 p.m. in the lobby of Cleveland Federal S&L and the Mass Handbell Choir will perform from 9:30 until 10 p.m. at First Baptist gymnasium. The dancers and magician will perform at Central Church fellowship hall starting at 8 p.m. Performances by school groups will start at 8 p.m. at BB&T lobby. The Cecilia Music club will perform at 8 p.m. in the sanctuary of First Baptist Church of Shelby followed by the Cleveland Choral Society.

BALLENGER TO BE ON TV

U.S. Congressman Cass Ballenger (R-N.C.) discusses President Bush's first year in office in January's edition of "Watch On Washington." The monthly public affairs television program is sponsored by Southern Bell

Corporation and will air on Jan. 2 at 7:30 p.m. on Channel 14 in Hickory, on Jan. 14 at 5 p.m. on Channel 42 in Charlotte and on Jan. 28 at 1:30 p.m. on Channel 58 in Concord.

HAPPY New Year

from

Satterfields

4702 East Dixon Blvd. — Shelby

"STARTING A TRADITION"

New Year's Eve Dinner & Party — Make Your Reservations Now — Limited Availability — First of 2 Seatings — 5 pm-8 pm Regular Menu Selections.

Second Seating 9 pm — The Excitement Begins With Satterfield's Salad, Steak & Lobster, Baked Potato, Fresh Baked Bread, Dessert, Beverages, and the fun continues, Live Entertainment, Dancing, Party Favors, Plus Set-Ups Provided.

Complete Evening of Festivity:

\$30⁰⁰ per person

Tax & gratuities included. Brown Bagging Permitted
Call Now For Reservations **734-0400**

Last Great Sale Of The 80's

1989 MUSTANG LX

2 Door Sedan

Air conditioner, electronic am/fm stereo, P195/75RX14 white wall tires, power window/door locks, speed control, wire wheel covers, environmental protection package. Stock #M34

List.....11,483

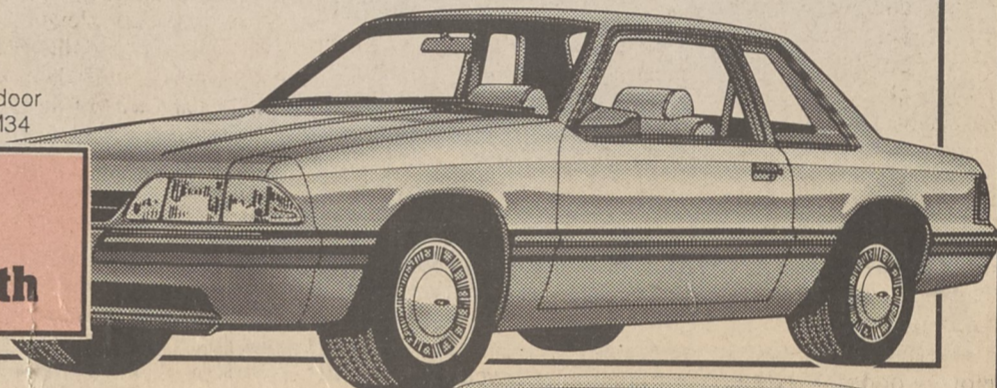
Ford Discount.....1,069

Ford Rebate.....1,000

Wade Ford Discount.....935

8,419

\$174/month



1989 ESCORT GT

Air conditioner, rear window wiper/washer, premium sound system, clearcoat metallic paint, am/fm stereo cassette, tilt wheel, rear window defroster, speed control, carpeted floor mats. Stock #E32

List.....11,243

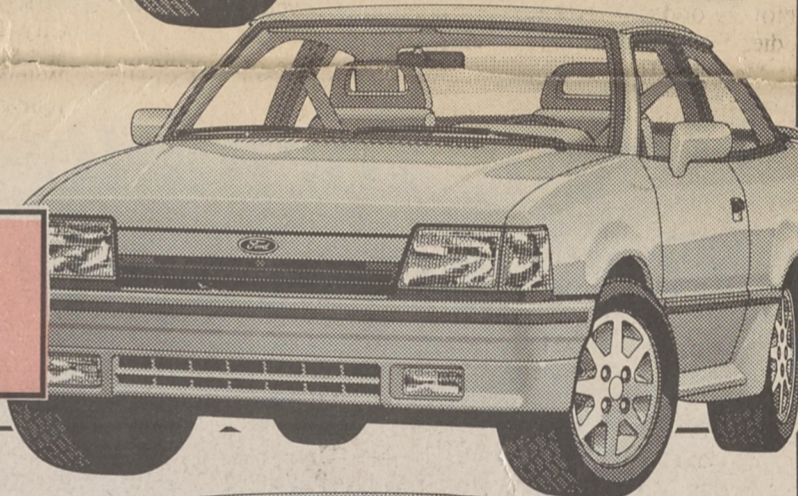
Ford Discount.....353

Ford Rebate.....1000

Wade Ford Discount.....995

8,895

\$184/month



1989 RANGER XLT

Stainless panels, deep dish cast aluminum wheels, air conditioner, chrome step bumper, am/fm stereo cassette, sliding rear window, 60/40 cloth split bench seat, power steering, environmental protection package. Stock #R27

List.....11,901

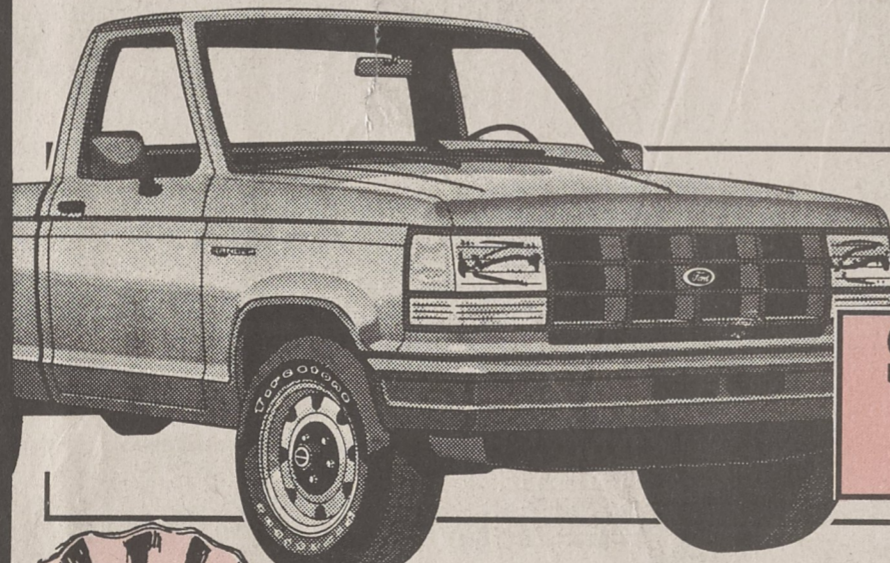
Ford Discount.....1,391

Ford Rebate.....1,000

Wade Ford Discount.....1,562

7,948

\$162/month



1989 RANGER

Charcoal paint, wheel lip moldings, custom trim, electronic fuel injected engine. Stock #R40

\$179/month

List.....8,224

Ford Rebate.....1,000

Wade Ford Discount.....1,120

6,104



WADE FORD

HIGHWAY 74 BUSINESS-KINGS MOUNTAIN
PHONE 739-4743 TOLL FREE 1/800-232-1655

