

# GARAGE SALE

EVERY CAR IN OUR GARAGE HAS GOT TO GO!

## HUGE SAVINGS

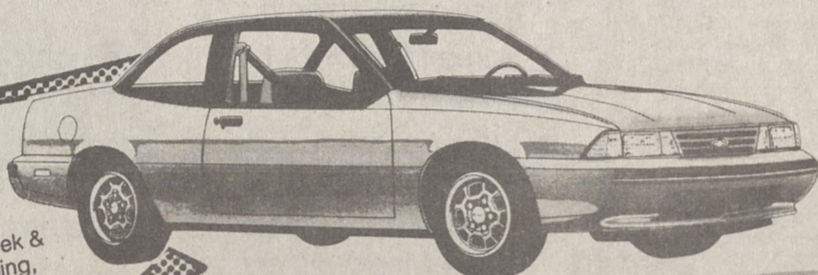
WE SELL MORE AND WE SELL IT FOR LESS!! WE BEAT THE COMPETITION PRICE AND PAYMENTS!!!

### NO MONEY DOWN "REBATES"

#### 1990 Cavalier 2 Dr. Coupe

5 sp., AM/FM stereo cassette, clock, seek & scan, power steering, body side moulding, dark blue cloth bucket seats, light blue metallic.

Your Choice Only **\$178<sup>99</sup>\***



#### 1991 S-10

5 sp., 4 cylinder, fuel injected, charcoal, custom vinyl, bench seat, dk. gray metallic, steel belted radial tires, 373 rear axle, black step bumper.

Your Choice Only **\$178<sup>99</sup>\***



<b>1990 GEO METRO</b> <p>Stock #3648, 4-Door, 5 speed, stereo radio, sport stripes. Rally wheel covers, red.</p> <p>SALE PRICE <b>\$7,050</b></p>	<b>1990 GEO METRO</b> <p>Stock #3645, 5 speed, sport stripes rally wheel covers, silver with factory air conditioning</p> <p>SALE PRICE <b>\$7,120</b></p>	<b>4 WHEEL DRIVE FULL SIZE TRUCK</b> #3338 <p><b>\$12,650</b> AFTER \$500 REBATE</p>	<b>1990 GEO STORM</b> <p>Stock #3356, 5-speed, air conditioning, stereo, cassette, clock, floor mats, high performance sport coupe</p> <p>SALE PRICE <b>\$9,950</b></p>	<b>1990 GEO TRACKER 4X4</b> <p>Stock #3659, Convertible, 5 speed, stereo cassette radio, 4 wheel drive, removable top, air conditioning, top.</p> <p><b>\$ 1000 Rebate</b></p>
--	---	--	--	---



1990 APV VAN **\$900 REBATE**



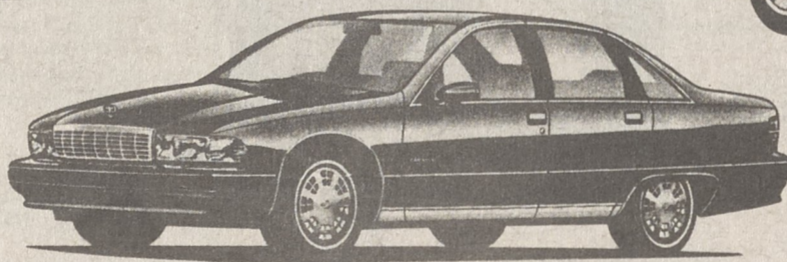
OVER **\$1,000** FACTORY REBATES



JUST ANNOUNCED **\$1400** FACTORY REBATE LARGEST EVER #3580



3 NEW FULL SIZE HIGH TOP CONVERSION VAN **10.9%** FINANCING FOR 60 MONTHS



1991 CAPRICE **\$700 REBATE**



OR **7.9%** GMAC FINANCING 48 MONTHS

\* To Finance \$7956 for 60 months, \$178.99 per month, at 12.5% APR, plus NC tax, tag, \$39.10 Adm Fee, on approved credit, with factory rebates applied as down payment on loans.

### QUALITY PRE-OWNED VEHICLES

<b>1988 FORD RANGER 4X4</b> 2 Tone, 5-speed, 4x4, air-conditioning, power steering, power brakes, stereo. Super price. St. #25728	<b>1976 CHEVROLET 1/2 TON TRUCK</b> Automatic, air conditioning, long wheel base. Good low price. St. #3611A	<b>12 PASSENGER VAN</b> Low mileage, front and rear air, power windows, locks, lift, cruise, Big V-8. St. #2881	<b>1988 CHEVROLET CORSICA</b> V-6, auto., power steering-brakes, air cond., cruise, lift, wire wheel covers, 26,134 ms. St. #2355 A	<b>1988 NISSAN SENTRA</b> 2-door, Red, automatic, power steering-brakes, Rally wheels, stereo cassette. 24,357 ml. St. #3052A	<b>1988 MAZDA 323</b> Automatic, air conditioning, power steering-brakes, stereo radio, cloth interior, 40,925 ml. St. #3541A	<b>1988 CHEVROLET BERETTA</b> 2 door coupe, auto., air conditioning, power steering-brakes, stereo cassette, cruise, lift, stereo cassette, cloth interior. Low Price St. #3346A
<b>1988 FORD RANGER</b> Short bed, XLT Model, 5 speed, air conditioning, power steering, power brakes, cruise, lift.	<b>1987 FORD RANGER</b> Solid black, custom stripes, ground effect, may wheels, white lettered tires. St. #2577A	<b>1985 JEEP WAGONER</b> 4-door, Loaded, automatic, power steering, power brakes, power windows, power door, locks, cruise, lift. St. #2869.	<b>1987 DODGE CHARGER</b> 2-door sport coupe, auto., power steering-brakes, air cond., stereo radio, sportstrips, 55,171 miles. St. #2529A	<b>1987 CHEVROLET CAMARO</b> Sport Coupe, white, auto., air cond., power steering-brakes, stereo radio, cloth bucket seats, 57,032 miles. St. #3108A	<b>1987 HONDA ACCORD LX</b> Dark blue w/d.b. interior, auto., power steering-brakes, windows-door locks, air cond., cruise, stereo cassette. 43,763 ms St. #3707.	<b>1985 BUICK CENTURY T-TYPE</b> Auto, air cond., power windows-doorlocks, cruise, lift, stereo cassette, cloth interior. Low Price St. #3346A
<b>1989 PONTIAC GRANDAM</b> Automatic, air conditioning, power steering, power brakes, cloth bucket seats, stereo radio, aluminum wheels, medium blue metallic. 27,547 miles. St. #352	<b>1986 FORD RANGER</b> Extended cab, air conditioning, power steering, power brakes, stereo, jump seats. St. #3310A	<b>1989 CHEVROLET CAMARO RS</b> Automatic, power steering, 1-look, power brakes, power windows, cruise control, lift steering, stereo cassette, aluminum wheels, 10,276 miles. St. #3328A	<b>1985 NISSAN PULSAR</b> 5-Speed, air conditioning, cloth interior, Super value. St. #340B	<b>1984 OLDS TORONADO</b> Big Car Ride. Loaded with every option. St. #2999A	<b>1984 CHEVROLET CAPRICE CLASSIC</b> V-8, auto, air cond., power windows, door locks, cruise, lift steering, wire wheel covers. St. #3758A	<b>1986 NISSAN MAXIMA</b> 4-door, V-8, auto., power steering-brakes, cruise, rally wheels, radial tires. St. #3426A
<b>1989 FORD ESCORT GT</b> 2-door Sport Coupe, Solid black, air conditioning, power steering, power brakes, stereo cassette, cloth interior, 4213 miles. #3398A	<b>1989 CHEVROLET CAMARO RS</b> V-8, automatic, power steering, brakes-windows-door locks, cruise control, lift steering, stereo cassette. 15,429 miles. St. #3752A	<b>1990 CHEVROLET LUMINO EURO</b> Auto, power steering-brakes-windows-dr. locks, alum. wheels, Eagle GT Radial tires, case, cloth bucket seats w/ console and more, 872 ml. St. #2928A	<b>1989 CHEVROLET S-10 BLAZER</b> 4x4, Tahoe, blue-silver, blue cloth, 43 V-6, automatic, power windows-door locks, cruise, lift. #3591A	<b>1988 CHEVROLET C-1500</b> 2 Wheel drive, 5-speed, long wheel base, factory air cond. anti-lock brakes, stereo. St. #3654B	<b>1988 FORD BRONCO</b> Full size Bronco, 4 wheel drive, XLT model, auto. loaded. St. #3710A	<b>1986 FORD BRONCO</b> Full size Bronco, 4 wheel drive, XLT model, auto. loaded. St. #3618A
<b>1986 CHEVROLET SUBURBAN</b> Full size, 4 wheel drive, Silverado, front/rear air. Loaded. St. #3432A	<b>1988 FORD F-250</b> 3/4 Work Truck Special. Over-size tires, heavy duty suspension. Super Value. St. #2374B					



# CARTER CHEVROLET



Mark Carter, Mark Johnson, Carl Bell, Fred Brown

200 WEST DIXON BLVD. SHELBY, N.C. 482-4341

Ray Walker, Ronnie Taylor, Joe Hamrick, David Dixon,