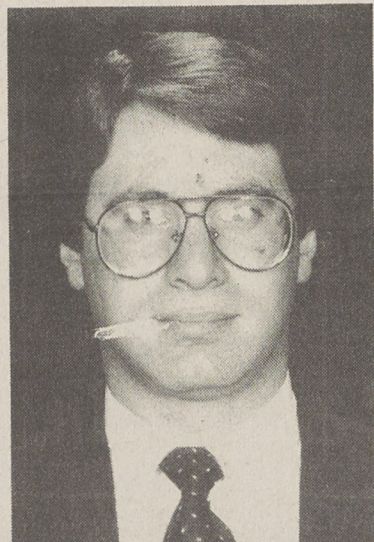




JACK HERNDON



MELISSA LAWRENCE



RICH LEVY

## Carolina State Bank makes appointments

Kings Mountain's new Carolina State Bank has announced the employment of Rich Levy as Vice President and Senior Lending Officer and the appointment of William (Jack) Herndon and Melissa Neisler Lawrence to the Advisory Board.

President and CEO John Godbold said Levy brings a wealth of lending experience to Carolina State Bank. He worked as a credit analyst at South Carolina National and then developed the Commercial Credit Department for First Federal Savings and Loan Association in Greenville, S. C. prior to coming to Shelby. Since 1986 he has served as the Commercial Banking Officer in the Shelby market for First Union National Bank.

Herndon, a life-long resident of Grover, retired in 1984 after 33 years of service with Sears. He is a member of the Cleveland County Planning Board, has served on the

KM Hospital board of directors and is a past president of Grover Lions Club. He and his wife, Betty, are members of Grover First Baptist Church where he is a deacon. The Herndons have three children and six grandchildren.

Melissa Neisler Lawrence is owner and operator of Travel Matters Inc. of Kings Mountain. A graduate of Meredith College with B.A. in History, she is a member of KM Rotary Club, KM Chamber of Commerce and Cleveland County Chamber of Commerce. She is married to William D. Lawrence and they have a son, William. They are members of First Presbyterian Church in Gastonia, where she serves on the nursery committee.

Levy, a 1980 graduate of Miami University in Oxford, Ohio, received his undergraduate degree in both Finance and General Management. He holds a Master's of Business Administration from USC in Columbia.

In making the announcement of Levy's appointment, Godbold expressed his pleasure with Levy's decision to become a part of the new Bank's management team. "Rich's knowledge of the local market adds additional strength to our bank team. I feel he will enjoy the atmosphere and flexibility he will have in serving his customers in a community bank."

Levy served on the board of directors of Shelby Kiwanis Club and James Home. He is active in Cleveland County Chamber of Commerce. Levy is married to Amy Munn Levy and they have two children, Brian and Kristen.

Carolina State Bank will open its doors for business April 8 at both its Kings Mountain and Shelby offices. The bank raised over \$6.9 million in capital during 1990 and will only be the second bank in the state's history to open a new bank with two offices.

## CRISIS

From Page 1-A

dents with information on what to do in event of a crisis.

For the benefit of the participating schools, each crisis is color coded: blue, orange, brown, white, green, red, purple and gray. Each school system has written appropriate plans for dealing with each and designated persons in charge of each situation. School populations are often affected by crises that occur within the school as well as the community at large, said Goforth. Such reactions include high levels of anxiety, stress and fear, a preoccupation with the situation, and a state of disequilibrium that exist for most victims.

Thrift said it's up to the principal at each school to determine if a crisis exists at the particular school and up to the superintendent to determine if it's a district-wide crisis.

In the event of a serious accident or severe illness, members of the crisis team are alerted to code blue and they administer first aid or CPR, call 911 to receive emergency rescue service and notify appropriate family members. The plan also calls for notifying the Central Office of the school system, communication with the media and statement to school personnel and students. If the incident occurs during an instructional period, the classroom students are moved to the library while the patient is receiving treatment.

Crisis team members know that code white means the death of a faculty member/student or a suicide. They are cautioned to verify the accuracy of the situation and protect family privacy. If death occurs during school hours, Crisis team members identify at risk students, close friends, siblings, and counsel with small groups or conduct classroom guidance.

In event of a bus, car or pedestrian accident, the code is yellow and Crisis team members are at the telephone to report and receive necessary information about the accident and go to the accident scene and accompany the injured to the emergency room. They also notify parents, the bus garage and the district school office. They are cautioned not to speculate on condition of patient but give only fac-

tual information.

Health Coordinator Borders said that 45 KMHS students are currently in training as peers as an interaction group to help kids in crisis. Support groups active at both KM Middle School and High School and elementary classroom teachers in the classrooms helped kids cope with the Middle East crisis.

Borders said she hoped that bus drivers, as well as all school personnel, could be trained in CPR and first aid.

"We have to be able to think and move fast in time of crisis and that's what this committee is trying to get across in training sessions as we formalize a plan we hope we can leave on the shelves and never use," said Goforth.

"The Peoples Choice of Pageants"

### Beauty Pageant

Plus (Optional) Modeling  
**YOU CAN ENTER**  
(No Experience Necessary)

**10 Age Divisions • Birth To 25 Yrs.**  
When: **Sat., March 23, 1991**

Where: **Kings Mtn., North Elementary School**

**SAVINGS BONDS • LARGE TROPHIES • CROWNS**  
**PLUS 2-7 DAY CRUISES AND 3-1991 AUTOMOBILES**  
GIVEN AT FINALS: Call For More Information Or An entry Form:  
Carolyn Marley 704-295-3880 or 922-9613

Forms Available At: Country Corner, Dallas, N.C.  
Carpenters, Dallas, N.C. Poffie Girls

## New Big Super Color Portrait Special at

### CORNWELL DRUG

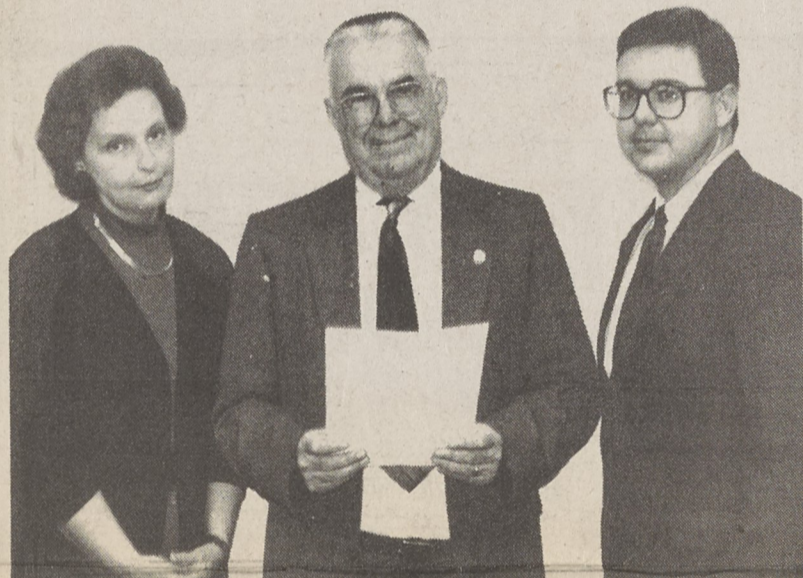
812 W. King St., Kings Mountain

## Saturday, March 16, 11 to 4

### L&H Studios

FREE 16 mini wallets with package  
2-11x14, 2-8x10, 3-5x7, 15 wallets,  
4 Big Super wallets

All for **\$21.90** plus tax  
*No Extra Charge For Groups*



**THIS IS OLDER WORKER WEEK-Kings Mountain Mayor Kyle Smith, center, has joined Governor Jim Martin, not pictured, in proclaiming the week of March 10-16 as "Employ the Older Worker Week."** Janice Morehead, left, branch officer supervisor at the Kings Mountain Employment Security Commission, and Sherwood Southerland Jr., manager of the Shelby and Kings Mountain ESC, encourage area employers to consider older workers when hiring new employees. They say that mature workers offer many advantages which contribute to overall productivity.

## JV girls post 12-4 record

Kings Mountain High's junior varsity girls basketball team recently completed its season with a 12-4 record.

KMHS had not had a JV team in several years but revived the program this year because of the excellent turnout of young players.

Deborah Bell coached the team, which had gone two years without a victory in the junior high ranks. After losing its first two games, the

girls won 11 straight games before losing two of their last three games.

Angie Sweezy, who was moved up to the varsity for the final three games, led the scoring with a 16.1 average. Natalie Barnes averaged 6.4, Holly Goforth 6.0, Christie McCleary 5.7, Anita Whitaker 2.0, Randy Carroll 1.1, Rebecca Champion 1.1, Kiesha Wilson 1.1 and Cindy Robbs 1.0.

## Wade Ford wins service award

Wade Ford of Kings Mountain has won the Distinguished Achievement Award for Quality for the fourth year in a row.

The award recognizes the top Ford dealerships in the nation for their high level of customer service.

Wade will receive a plaque and pin acknowledging its performance.

Wade Tyner, owner of Wade Ford, praised his sales, business and service staffs for their overall commitment to providing high quality service to their customers.

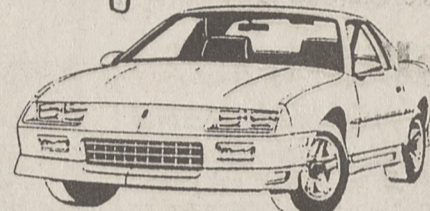
## MIDPINES

From Page 1-A

wouldn't want to eat off that concrete, but it will be that clean," said Allen of the proposed manged site. The present greenbox will be in use until the new site becomes operable, said Allen, and the greenbox area will then be seeded and landscaped to keep down erosion. "Every inch of the new site will be in concrete so there will be no danger of discharge. No hazardous waste will be acceptable and the area will be cleaned up to prevent pollution," he said.



**We ARE Cleveland County's LOW PRICE Used Car Headquarters! Even The Competition Is CHECKING US OUT!**



<b>88 YUGO</b> 5 speed. Radio, dark blue. <b>\$1995</b>	<b>73 CHEVROLET TRUCK</b> V-8, 1/2 ton, long wheel base. St. #2931B. <b>\$1995</b>	<b>74 GMC SIERRA TRUCK</b> V-8, 3 speed, bucket seats, chrome wheels. St. #4186B. <b>\$1995</b>	<b>80 MAZDA B-2000</b> Short wheel base. 5 speed, 54,000 miles. <b>\$2995</b>
<b>85 SUBARU GL 4x4</b> 5 speed, AC, PS, PB, 4 wheel drive, aluminum wheels, much more. <b>\$2995</b>	<b>84 BUICK ELECTRA</b> 4 door, big car, V-8, loaded, p/windows, p/locks, p/seats, rear wheel drive, dark blue. <b>\$3995</b>	<b>84 CHEVROLET CONVERSION VAN</b> Power windows and locks AC, running boards, aluminum wheels, AM/FM cassette, fold down sofa, 4 captain chairs and table. <b>\$8995</b>	<b>77 CADILLAC COUPE DEVILLE</b> Baby powder blue, white vinyl top, white leather interior, fully equipped. Everything works. Must see! <b>\$3995</b>
<b>85 TOYOTA MR2</b> Bright blue, 5 speed, AC, super clean car. 2 seats. SAVE! SAVE! SAVE! <b>\$5995</b>	<b>85 BUICK ELECTRA WAGON</b> Full size wagon, V-8, loaded, with all options plus low price. <b>\$6995</b>	<b>90 GEO METRO</b> Auto, AC, stereo, 4 door, 50 miles per gallon. <b>\$7995</b>	<b>85 JEEP WAGONEER</b> Chevrolet limited model. Wood grain, auto, PS, PB, p/windows, PDI, cruise, tilt, leather seats. <b>\$7995</b>
<b>1976 CHEVROLET NOVA</b> 4 door, V-8, automatic, AC, PS, PB, stereo, vinyl trim. WWW. #218A. <b>\$2295</b>	<b>1983 FORD ESCORT WAGON</b> GL model, automatic, AC, PS, PB, stereo, remote mirrors, cruise, tilt. #4218B. <b>\$2495</b>	<b>78 FORD F150</b> V-8 engine, PS, PB, dk. blue. <b>\$2,495</b>	<b>1986 CHEV. SPRINT</b> 4 door, automatic, AC, PS, PB, silver, rally wheels, stereo. <b>\$2995</b>
<b>87 DODGE CHARGER</b> AC, PS, PB, cassette, 40,000 miles, cloth interior, 5 speed, rally wheels. <b>\$4495</b>	<b>84 CADILLAC SEDAN DEVILLE</b> 4 door, V-8, rear wheel drive, loaded. Check us out! <b>\$4495</b>	<b>85 DODGE D150</b> 1/2 ton, V-8, automatic, PS, PB, long wheel base. One owner, local. Very clean. <b>\$5995</b>	<b>84 OLDS TORONADO</b> V-8, automatic, AC, loaded out! Power windows & door locks, cruise. <b>\$5995</b>
<b>86 NISSAN MAXIMA</b> 5 speed, AC, PS, PB, PW, PDI, cruise, tilt, sunroof. <b>\$7995</b>	<b>89 PONTIAC GRAND AM</b> 2 door, V-6, auto, PS, PB, cruise, tilt, cloth, cassette. <b>\$7995</b>	<b>86 TOYOTA CRESSIDA</b> Top of the line, auto, sunroof, PW, PDI, cruise, tilt, leather interior, dk. blue, 4 wheels. Must see! <b>\$8695</b>	<b>76 CHRYSLER NEWPORT</b> 4 door, V-8, bucket Power windows, locks and seats. Plus much more! <b>\$995</b>

GM AUCTION CARS - VANS NOW IN STOCK: 90 CHEVROLET CELEBRITY, SW, 90 ASTRO EXT LENGTH 8 PASSENGER - 90 GEO METRO - 90 CADILLAC SEDAN DEVILLE - MORE UNITS ARRIVING DAILY!

# CARTER CHEVROLET

Mark Carter - Conway Carter - Randy Ganit - Marty Marshall

HWY. 74 BYPASS - SHELBY 482-4341

\*All Prices Plus Tax, Tag And \$20.00 Admin. Fee.

Ray Walker - Joe Hamrick - Paul Carter

## MOUNTAINEER



**Charles T. Smith**  
1019 Brookwood Drive  
Kings Mtn. N.C. 28086

## TELEPHONES

- Installation and Maintenance of Business Telephone Systems.
- AT&T trained
- Licensed and Insured
- Commercial and Residential wiring
- Key Systems
- PBX Systems
- Page Systems

**Charles T. Smith, Owner**  
1-704-739-2559  
1-704-868-1318 Pager