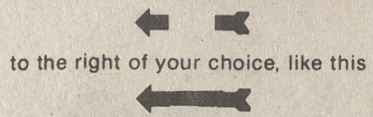


OFFICIAL NON-PARTISAN BALLOT FOR MUNICIPAL ELECTION IN WARD ONE CITY OF KINGS MOUNTAIN, N.C. OCTOBER 8, 1991

INSTRUCTIONS TO VOTER
 a. TO VOTE FOR a candidate whose name is printed on the ballot, complete the arrow pointing to the candidate for whom you desire to vote.
 b. Mark only with pen provided by precinct official.
 c. If you tear, deface or wrongly mark this ballot, return it and get another.
 d. To vote, complete the arrow



COUNCILMAN WARD ONE (You may vote for ONE)

- FORTEE GAMBLE ←
- PHILLIP HAGER ←
- TODDY INGRAM ←

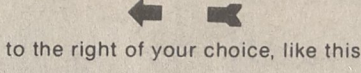
MUNICIPAL ELECTION WARD ONE OCTOBER 8, 1991 KINGS MOUNTAIN, NC

SAMPLE

Chairman, Kings Mountain Board of Elections

OFFICIAL NON-PARTISAN BALLOT FOR MUNICIPAL ELECTION IN WARD TWO CITY OF KINGS MOUNTAIN, N.C. OCTOBER 8, 1991

INSTRUCTIONS TO VOTER
 a. TO VOTE FOR a candidate whose name is printed on the ballot, complete the arrow pointing to the candidate for whom you desire to vote.
 b. Mark only with pen provided by precinct official.
 c. If you tear, deface or wrongly mark this ballot, return it and get another.
 d. To vote, complete the arrow



COUNCILMAN WARD TWO (You may vote for ONE)

- JACKIE D. BARRETT ←
- JEFFREY D. GREGORY ←
- JAMES (JIM) GUYTON ←
- ROY PEARSON ←

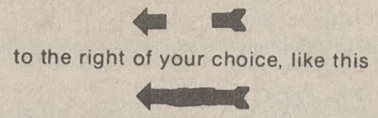
MUNICIPAL ELECTION WARD TWO OCTOBER 8, 1991 KINGS MOUNTAIN, NC

SAMPLE

Chairman, Kings Mountain Board of Elections

OFFICIAL NON-PARTISAN BALLOT MUNICIPAL ELECTION CITY OF KINGS MOUNTAIN, N.C. OCTOBER 8, 1991

INSTRUCTIONS TO VOTER
 a. TO VOTE FOR a candidate whose name is printed on the ballot, complete the arrow pointing to the candidate for whom you desire to vote.
 b. Mark only with pen provided by precinct official.
 c. If you tear, deface or wrongly mark this ballot, return it and get another.
 d. To vote, complete the arrow



FOR MAYOR (You may vote for ONE)

- JAMES A. CHILDERS ←
- SCOTT NEISLER ←
- GILBERT HAMRICK ←

COUNCILMAN AT-LARGE (You may vote for TWO)

- LUTHER BENNETT ←
- NORMA BRIDGES ←
- SHIRLEY BRUTKO ←
- JOE KING ←
- ALVIN B. MORETZ ←
- JERRY M. MULLINAX ←

Municipal Election October 8, 1991 KINGS MOUNTAIN, NC

SAMPLE

Chairman, Kings Mountain Board of Elections



KRISTEN LONG

Kristen is two

Kristen Leigh Long, daughter of Bryan and Leigh Ann Long of Cherryville, celebrated her second birthday Sept. 25. She was honored on Sept. 28 with a Carrousel birthday party at her home. The party featured a carrousel cake which was served to family and friends.

Guests included Ian Blanton, Ethan Blanton, Wendy Bradham, Holly Bradham, Jessalyn Smith, Todd Pearson, Kevin Harris, Taylor Long, Tasha Absher, Kyrysten Vinsett, Michelle Lail and Christopher Lail. Entertainment included pony rides and games.

Kristen is the granddaughter of Mr. and Mrs. Farchel Blanton of Kings Mountain and Mr. and Mrs. Keith Long of Cherryville. Her great-grandparents are Margaret Harrelson and Ruth Long of Cherryville.

Kristen was in the Little Miss Mountie Pageant Sept. 14 at North School. She won Best Model in her age group. She was sponsored by Carolina Heating and Cooling of Cherryville and Dellinger's Jewel Shop, Kings Mountain.

It's a boy

Mr. and Mrs. Wayne Love Jr. of Stanfield announce the arrival of their third son, Clay Daniel Love, Tuesday, September 23, Charlotte Presbyterian Hospital. He weighed eight pounds and was 20 inches long.

The baby has two brothers, Wade Hampton and Nathan.

Mr. Love is the grandson of Mrs. Ila Morrow McIntyre of Kings Mountain and the late George Morrow.

HELLO

I'm Franklin Brackett and I have been accused of signing your name against the Garbage Compactor. This is to certify that the names on the petition were signed by his or her self.

Signed Franklin Brackett

THE 1992 FORDS are Arriving Daily, and we must make room by moving out the 91's

All '91 Vehicles at Dealer Cost

INTEREST RATES AS LOW AS

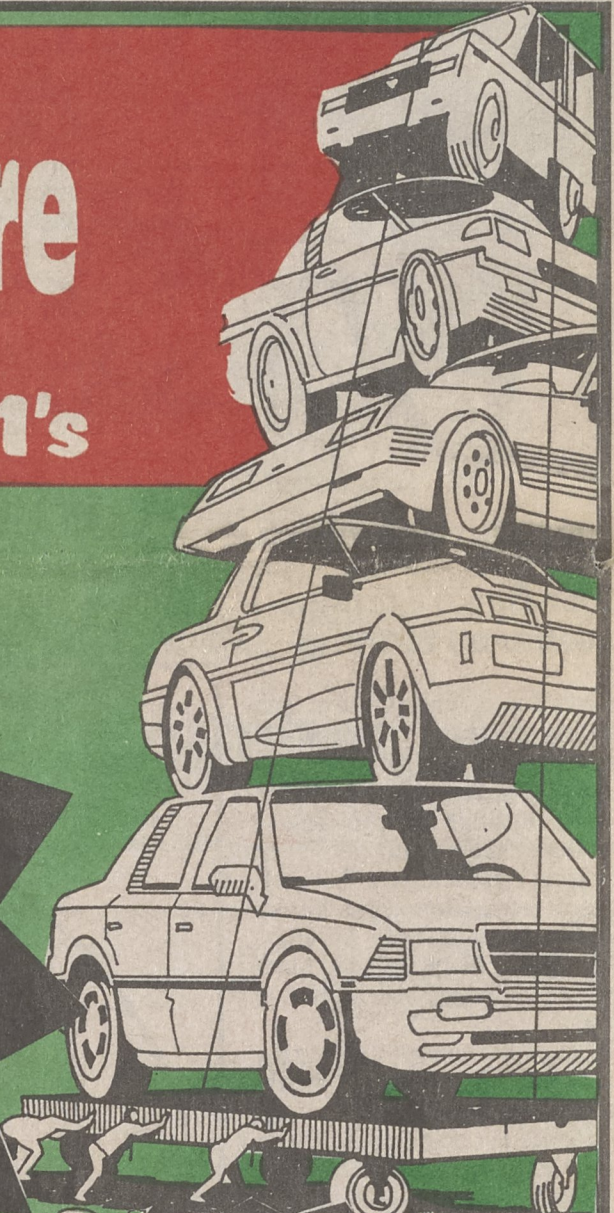
SAVE OVER

\$3000

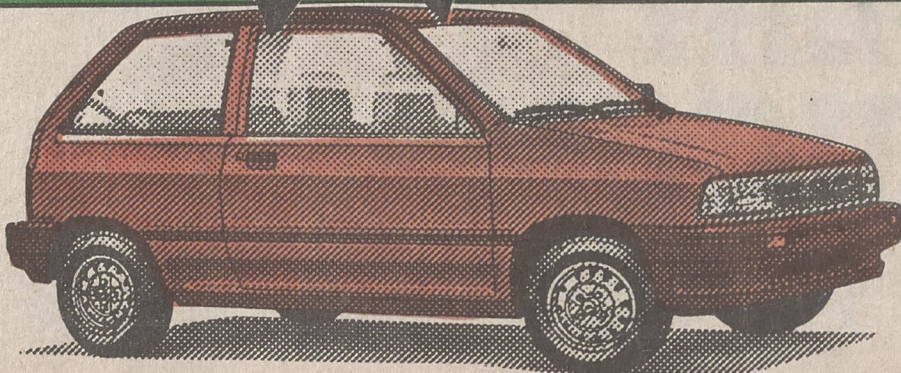
4.8%

ON SELECTED MODELS

A.P.R.



Rebates up to \$1000 on selected '91 & '92 models

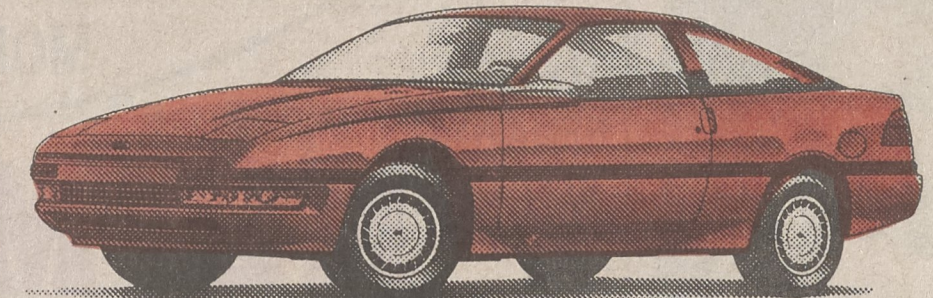


1991 FESTIVA L #8201

2 DOOR HATCHBACK • HOT RED COLOR LIST \$7,032.00

Yours For Only

\$5,950*



1991 PROBE GL

2 DOOR HATCHBACK • WHITE W/ BLUE INTERIOR • LOADED WITH TIOLT STEERING • CONVERSION GROUP • TINTED ELECTRIC DEFROST WINDOWS • 4 CYL. ENGINE • AUTOMATIC OVERDRIVE TRANSMISSION • SPEED CONTROL • AC • MUCH MORE..LIST \$14,600

Yours For Only

\$11,923*

*PLUS TAX, TAG, REBATE ASSIGNED TO DEALER.

KEETER FORD-SUBARU

See: Steve Hallman, Rob Bazzle, Millie Keeter Spangler, Bill Houser, Rick Ballard, Ralph Hord, H.S. Keeter, Jr., Sonny Davis, Eddle Howard, Lewis Willis
CLEVELAND COUNTY'S LEADING VOLUME DEALER • 1775 E. DIXON BLVD., SHELBY • 482-6791
WE WILL MEET OR BEAT ANY FORD DEALER'S ADVERTISED PRICE • JUST BRING IN THEIR QUOTE