

## Pop and his lady could really boogie

They were the most energetic couple on the floor. They showed up before the dance started and stayed until the band quit. Seldom did they ever miss dancing to the music, no matter what was playing. That's not too unusual, except we were playing a combination of rock-a-billy, boogie and rock. They were in the sunset years. The old gentleman (we just called him pop) was crowding 70. He'd show up with a different woman just about every time he came to see us, which was anywhere with a 50-mile radius. The women were always younger than pop, by some 10 to 15 years. I think he must have worn those women out. Some may have died of a heart attack trying to keep up with him dragging leather.

The average age of the crowd was from 18 to 25. That didn't worry the old fellow. Nor did it bother the young folks that were there. In fact, they, like us, got a kick out of having him around. I'll admit he would make you feel worn out after seeing him on the dance floor all night.

Pop was easy going with a great personality. He probably had never had a bad thought. All he wanted to do was dance and live and let live.

The last time I saw him he had a lady who could flat out boogie. She was healthy too. About five feet six, muscle to the heels. Built like a tow sack full of rocks. She had dark skin, high cheek bones and dark hair. The markings of about a quarter's worth of Cherokee.

There was a table right at the edge of the dance floor. A fellow sitting there kept hollering at the old couple. I thought he was cheering them on. This was not true.

The old folks left the dance floor on their way to the concession stand. As they passed the table, the fellow screamed at them. The lady

## Private Melton at Fort Bragg

Army Pvt. Jeffrey M. Melton, an infantryman, has arrived for duty at Fort Bragg, Fayetteville, N.C.

He is the son of Mary Melton of 525 Crocker Road, Kings Mountain, N.C.

The private is a 1991 graduate of Kings Mountain High School.

## KM students on ASU list

The following King Mountain students have qualified for Appalachian State University's Dean's List. Students must attain a 3.25 grade point average on a 4.0 scale and carry at least 12 hours of academic credit to qualify for this honor.

Barbara Ann Hawkins, junior, Elementary Education major (K-6).

Charity Nicole Jackson, freshman, Elementary Education major (K-6).

Jeri Melissa Rikard, senior, Middle Grades Education (6-9).

Angela Marie Subler, sophomore, History, Secondary Education.

Marsha Elizabeth Ware, junior, Middle Grades Education (6-9).



TYLER ROSS

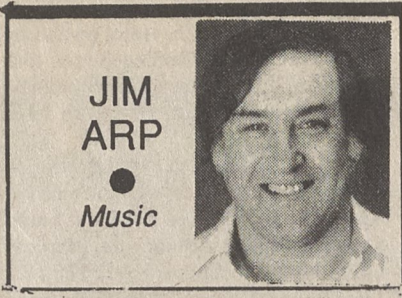
## Tyler Ross 1-year-old

Tyler Dustin Ross celebrated his first birthday at Dot's Day Care Wednesday, November 20. Friends enjoyed cupcakes, chips and drinks.

On Saturday, November 23, Tyler celebrated with his family with hamburgers, hotdogs and Mickey Mouse cake.

Guests were Tyler's grandparents, Dot and Ken Smith and Brenda and Jerry Ross. Other guests were Darla and Rusty Bridges, Deda Shepard, Toni Robert and Ansley Putnam, Tammy and Ross Ellis, and Lanny Thornburg. Special guests were Ann Gray and Greg and Cody Putnam.

Tyler's parents are Tim and Debbie Smith Ross.



JIM ARP  
Music

stopped. Pop took her arm and led on. On their way back, the man at the table sung out again. Once more the lady stopped. Pop got her moving. Another chat from the table. This time the lady did an about face. She stopped at the table. She looked the fellow in the face and said something. The words got all tangled up with the

noise and went off somewhere. I couldn't understand the language, but I saw what happened. Pop's dance partner reared back like a middleweight and punched the man right in the middle of the face as well as any many could have done. The impact put him on the floor on his back. He was just trying to raise up when she kicked the taste out of his mouth.

The bouncer had to grab the woman and half drag her away. He talked to her for a moment and she and pop left.

I often wished I had asked pop his real name, and where he was from. I don't know what ever happened to him. One thing's for sure, wherever he is I'd bet the farm he's dancing.



PRESENT CHRISTMAS PROGRAM - Second grade classes at Bethware School presented the musical "Happy Holiday" for the December PTO meeting.

# EVERYONE CAN BE A WINNER

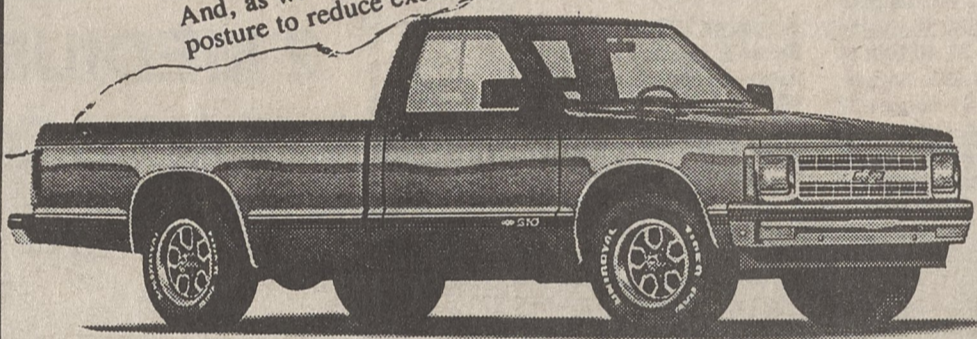
## OPERATION 20,000

December 26, 1991

ATTN: New Car and Truck Buyers in the Carolinas  
SUBJECT: "Operation 20,000" Official Notification

Dear New Car and Truck Buyers:

1991 has been one of the most challenging years in recent automotive history! And, as we close-out the 1991 calendar year, GM Dealers must take an aggressive posture to reduce excess dealer inventory.



### 1992 CHEVY S-10 TRUCKS

AIR CONDITIONING, OVERDRIVE TRANSMISSION, POWER STEERING, REAR ANTI-LOCK BRAKES, TAHOE EQUIPMENT GROUP, WHITE LETTER TIRES, RALLY WHEELS, CHROME EXTERIOR PACKAGE, TINTED GLASS, CLOTH BENCH, AM/FM STEREO, SEEK, SCAN, CASSETTE, DIGITAL CLOCK, ELECTRONIC FUEL INJECTION, SOLID COLOR, MUCH MORE.

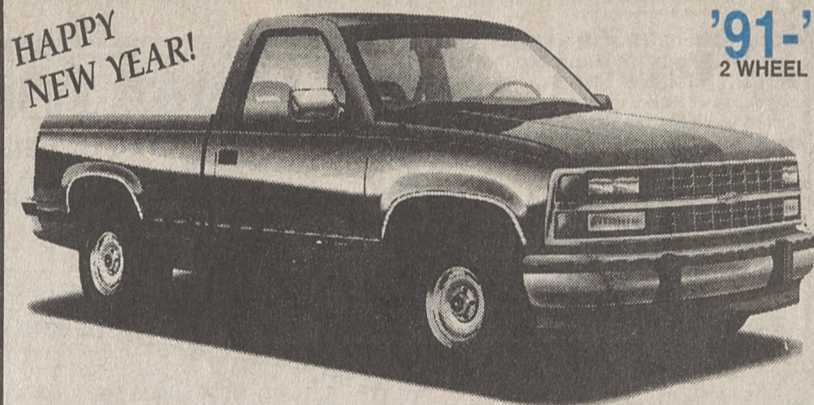
Look for our Special Inventory Reduction Prices Displayed on '91 and '92 Models!

Significant Factory Cash Back and GMAC Incentives Available!

# \$8590\*

ST. #4505. INCLUDES \$1000 FACTORY CASH BACK

## TREMENDOUS SAVINGS THRU JANUARY 6th!



### '91-'92 CHEVY TRUCKS

2 WHEEL DRIVE AND 4 WHEEL DRIVE REGULAR CAB MODELS

SAVE UP TO \$\$\$

# \$2000

INCLUDES FACTORY DISCOUNTS, FACTORY INCENTIVES AND CARTER DISCOUNTS OR ...

# 2.9%

EXTRA SAVINGS ON ALL DEMONSTRATORS

GMAC FINANCING  
2.9% 24 MOS.  
4.9% 36 MOS.  
6.9% 48 MOS.  
AVAILABLE IN LIEU OF REBATE DISCOUNTS STILL APPLY.



### 1992 GEO METRO

2-DOOR  
4-DOOR

IT GETS AN AMAZING EPA GAS MILEAGE RATING: 46 MPG CITY 50 MPG HIGHWAY

NO PAYMENT TIL MARCH 1992  
60 Mos.  
10.9 APR  
10% Down Pmt.  
TOP \$215.40  
FC 2015.40

# \$136<sup>89</sup> or \$7,720

AFTER \$750 CASH BACK

NO PAYMENT FOR 90 DAYS THAT'S THE LAST OF MARCH 1992

FIRST TIME BUYER PROGRAM - QUALIFIED 1<sup>st</sup> TIME BUYERS ARE ENTITLED TO \$400 DOWN PAYMENT ASSISTANCE AND SPECIAL FINANCING CONSIDERATION. SUBJECT TO PROGRAM GUIDELINES AND LENDER APPROVAL.



### '91-'92 CAVALIER

15 IN STOCK

### CAVALIER 2-DOOR

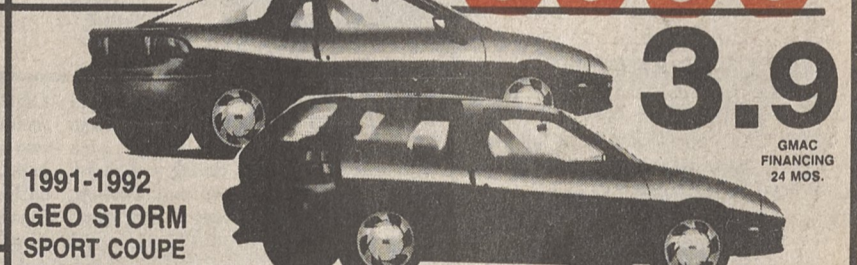
Stock #4443. Factory air conditioning, power steering, power brakes, cloth seats, AM/FM stereo cassette, radial tires, tinted glass, sport mirrors, floor mats. Much, much more.

After \$300 FACTORY CASH BACK

# \$8990



COLLEGE GRADUATE PROGRAM - QUALIFIED COLLEGE GRADUATES ARE ENTITLED TO \$400 DOWN AND PAYMENT ASSISTANCE AND SPECIAL FINANCING CONSIDERATION. SUBJECT TO PROGRAM GUIDELINES AND LENDER APPROVAL.



### 1991-1992 GEO STORM SPORT COUPE

HATCH BACK AND GSI MODELS  
TREMENDOUS FACTORY & DEALER DISCOUNTS & SAVINGS

# 3.9%

GMAC FINANCING 24 MOS.

FACTORY CASH BACK UP TO

# \$1000

7 UNITS IN STOCK NOW ALL DISCOUNTS & SAVINGS CLEARLY MARKED ON EACH VAN.

APV VANS ASTRO CONVERSION w/EXTENDED LENGTH SPECIAL FINANCE RATES AVAILABLE FOR QUALIFIED CUSTOMERS.

EVERY VEHICLE INCLUDED CHECK US OUT	1992 GEO TRACKER 4x4 6.9% Mos. -OR- 750 CASH BACK	1992 GEO PRIZM 4-DR 5-Speed, automatic. 6.9% Mos. -OR- 500 CASH BACK	1992 CHEV. S-10 BLAZER 2-Door, 4-Door, LT Model. CASH BACK UP TO \$1500	1992 CHEVROLET CAPRICE CLASSIC SEDAN & WAGON \$1250 FACTORY CASH BACK	91-92 CAMARO RS MODELS V-8 engine, 16" wheels 6.9% Mos. -OR- 1000 CASH BACK	1992 CHEVY LUMINA Coupe & 4-Door 6.9% Mos. -OR- 500 CASH BACK	1991 CHEVY BERETTA GT Model 6.9% Mos. -OR- 500 CASH BACK	LOOK FOR PRICES DISPLAYED ON 1991 & 1992 MODELS
-------------------------------------	------------------------------------------------------------	----------------------------------------------------------------------------------	----------------------------------------------------------------------------------	-----------------------------------------------------------------------------	-----------------------------------------------------------------------------------------	------------------------------------------------------------------------	-------------------------------------------------------------------	-------------------------------------------------

# CARTER CHEVROLET

ENDS JAN. 6th '92. DON'T MISS OUT

HWY. 74 BYPASS - SHELBY 482-4341

ALL PRICES + PYMTS PLUS TAX, TAG, ADM. FEE, DEALER 1370