

## Renwick broker specialist

Hugh F. Renwick has been named investment specialist by First Union Brokerage Services to provide financial planning services to customers in Charlotte, Gastonia, Shelby and Kings Mountain.

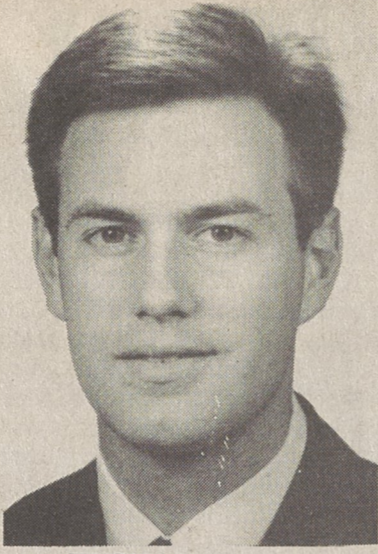
Renwick is based at First Union's Retail Investment Center in Charlotte and will spend several days each week in the bank's Gastonia, Shelby and Kings Mountain offices.

Renwick works with both individuals and business to determine their financial objectives and then develop a comprehensive plan to

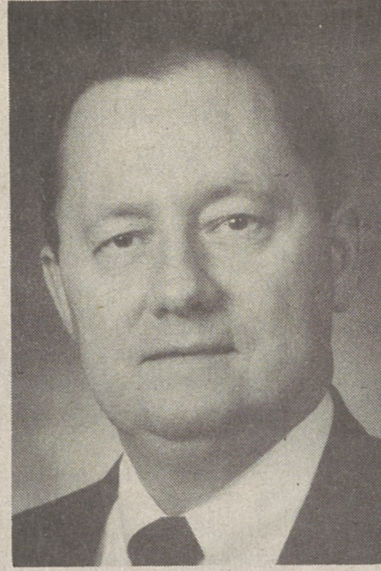
meet those goals. Part of the process may include a detailed analysis of the customer's current investment situation, using First Union's asset allocation model.

"Traditionally, financial institutions have offered this type of service only to individuals at the highest income brackets, but we offer the service at a very reasonable fee to customers at any income level," Renwick said.

Renwick, a native of Newberry, S.C., earned a bachelor's degree in administrative management from Clemson University. He joined First Union in January 1990



HUGH RENWICK



PETE MOORE

## Moore joins hospital

SHELBY- Cleveland Memorial Hospital President Curtis Copenhaver has announced the appointment of Pete Moore as director of long term care for the hospital.

"We are extremely fortunate to have Pete join us," Copenhaver said. "He will have an immediate impact on this hospital's plans for long-term-care needs."

Moore has worked in geriatric administration since 1977, where he has been employed by the Hillhaven Corporation. He has been director of operations for seven long-term-care facilities in

Virginia and North Carolina since 1987 before joining Cleveland Memorial.

He worked in Cleveland County earlier in his career at the Cleveland County Health Department from 1973 to 1977.

One of Moore's first duties will be planning for the hospital's relocation of its Skilled Nursing Unit to the new 120-bed long-term-care facility located at the intersection of North Lafayette and Ross Grove roads. It is scheduled to open late in February or early March.

See Moore, 7-B

# Budget Relief in a Can!

The dollar may be down against the Japanese Yen...but it's up against the Thrifty Maid Can! Save by the case, half case or by the can during Winn-Dixie's Mid-Winter Canned Good Sale!



Item	Each	Half Case	Full Case
16 oz. Thrifty Maid Whole or Cream Style <input type="checkbox"/> Golden Corn	40¢	\$4.59	\$7.99
16 oz. Thrifty Maid Large or Medium <input type="checkbox"/> Sweet Peas	40¢	\$4.59	\$7.99
16 oz. Thrifty Maid Cut <input type="checkbox"/> Green Beans	30¢	\$3.49	\$6.79
16 oz. Thrifty Maid French Cut <input type="checkbox"/> Green Beans	40¢	\$4.59	\$7.99
16 oz. Thrifty Maid Lite, Sliced or Halves <input type="checkbox"/> Peaches	66¢	\$7.79	\$13.99
16 oz. Thrifty Maid Lite, Sliced or Halves <input type="checkbox"/> Pears	58¢	\$6.79	\$13.39
20 oz. Thrifty Maid All Varieties <input type="checkbox"/> Pineapple	66¢	\$7.79	\$13.99
3 oz. Thrifty Maid All Varieties <input type="checkbox"/> Ramen Noodles	15¢		\$3.33
14 oz. Slick Beef, Chicken or Regular <input type="checkbox"/> Dog Food	20¢		\$4.69
6 oz. Kitty Please All Flavors <input type="checkbox"/> Cat Food	20¢		\$4.69



Less than 4 lb. package...lb.\$1.38

## Fresh Market Style Ground Beef

# \$1.18

lb.

4 lbs. or more per package



W-D Brand U.S.D.A. Choice

## Bottom Round Roast

Western Grain Fed

# \$1.97

lb.



W-D Select Lean Fresh Whole

## Boston Butt Pork Roast

lb.

# 97¢

Prices good Wed., Jan 1 thru Tues., Jan. 7, 1992.

These Categories Are Discounted Every Day!

- 10% Off All Magazines
- 25% Off All Greeting Cards
- 5% Off All Bag Chips
- 50% Off All Sunglasses
- 10% Off All Books
- 10% Off All Pantyhose

# WINN DIXIE

COPYRIGHT 1992 WINN-DIXIE CHARLOTTE, INC.

America's Supermarket

Quantity Rights Reserved

**Fresh Market Style Ground Chuck**  
**\$1.68**  
 4 lbs. or more per package lb.

**W-D Brand U.S.D.A. Choice Whole Special Trim Bottom Round**  
**\$1.78**  
 lb.

**Regular or Diet Chek Soft Drinks**  
**59¢**  
 2 liter bottle All Flavors

Absolutely, Positively...  
**The Low Price Leader!**

**STORE COUPON**  
**Superbrand Grade A Medium Eggs**  
**69¢**  
 doz.  
 Limit 1 coupon per family please. Coupon good thru Tues. Jan. 7, 1992. WINN DIXIE

**Deli-Bakery**  
**"Real Pit BBQ" Whole BBQ Chickens**  
**2 for \$6.00**  
 Freshly Baked Italian or French Bread . . . . . each 77¢

**Harvest Fresh Western Broccoli**  
**88¢**  
 large bunch

**Harvest Fresh Juicy Florida Grapefruit** . . . 5 lb. bag \$1.98

**Harvest Fresh Idaho Baking Potatoes** . . . 10 lb. bag \$1.88

**Minute Maid Frozen Orange Juice**  
**98¢**  
 12 oz. can

Regular or Country Style