

## Engagements



JILL MICHELE BROOKS  
WILLIAM C. RHINEHART JR.

### Brooks-Rhinehart

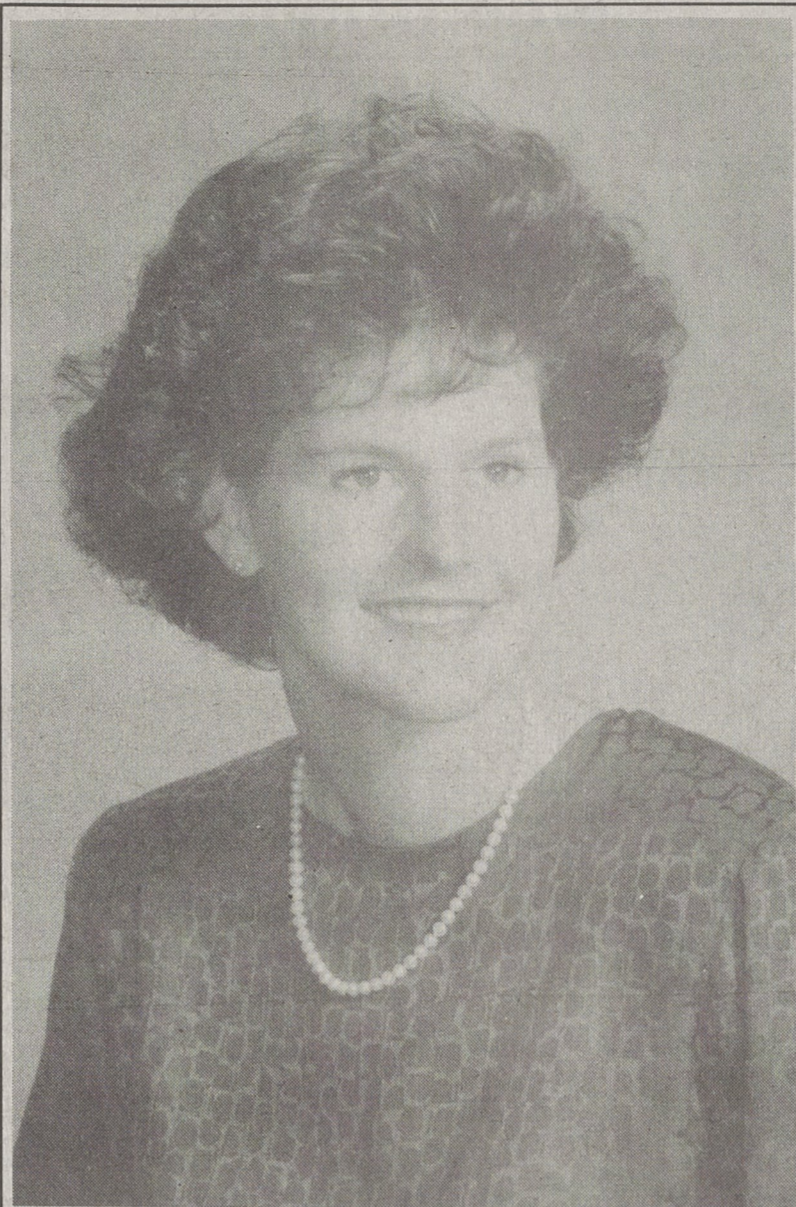
The engagement of Jill Michele Brooks of Kings Mountain and William C. "Casey" Rhinehart Jr. of Statesville is announced by her parents, Kay C. Barker of Kings Mountain and B. O'Brien Brooks of Charlotte.

The bridegroom-to-be is the son of Mr. and Mrs. William C. Rhinehart of Cramerton.

Miss Brooks is a 1985 graduate of Kings Mountain High School and a 1989 graduate of North Carolina State University with a B.S. degree in Recreation Resources Administration. At NCSU she was on the Dean's list, in the marching band, Rec Club and Intersarsity. She is a member of Cleveland County Jaycees. She is employed by Pioneer Girl Scout Council as Program Specialist/Camp Director.

The bridegroom-to-be is a 1984 graduate of South Point High School and a 1988 graduate of North Carolina State University. He received his B.S. degree in Recreation Resource Administration and graduated cum laude. He is a member of Xi Sigma Phi and Rho Phi Lambda honor societies. He is employed as a park ranger by Duke Power State Park on Lake Norman.

The wedding will be an event of October 24.



LISA MICHELLE QUINN

### Quinn-Kendrick

The engagement of Lisa Michelle Quinn and Joseph Dale Kendrick II, both of Kings Mountain, is announced by her parents, James Elwood Quinn Jr. of Greenville and Mr. and Mrs. Leslie Lawton Turner.

The bridegroom-to-be is the son of Mr. and Mrs. Dale Kendrick of Kings Mountain.

Miss Quinn was educated at J. H. Rose High School in Greenville and the University of North Carolina at Chapel Hill. She is employed at First Union National Bank in Shelby as customer service representative.

The bridegroom-to-be was educated at West Stanley High School in Stanfield and the University of North Carolina at Chapel Hill. He is employed as advertising director of Shelby Headline News and is volunteer DJ at WNCW in Spindale and a member of Catawba Valley Cyclists.

The wedding will take place October 24.

## Diamonds September Savings!

 Filigree Diamond Ring SALE \$59.95	 Ladies 1 Carat Diamond Ring \$399.00
 1 Carat Diamond Cluster Reg. 599.00 \$299.00	 Ladies 1 Carat Diamond Ring SALE \$399.00
 1/4 Carat Diamond Cluster Reg. 599.00 \$99.95	 Diamond Filigree Band SALE \$99.95
 Diamond Cluster Earrings Reg. \$119.95 SALE \$69.95	 Diamond Solitaires 2 Carat C-Z Earrings in Sterling SALE \$4.99
 Ladies Diamond Nugget Ring Reg. 39.95 \$24.00	 Rubies & Diamond Band /Sapphire SALE \$49.95
 Marquise Shape Diamond Ring Reg. 99.00 \$59.00	 Cluster on Wide Band SALE \$99.00
 Gents 1 Carat Diamond Ring SALE \$499.95	 10K Gents Diamond Ring SALE \$69.95

**ARNOLD'S Jewelry**  
THE ONLY STORE TO SHOP FOR DIAMONDS  
226 S. Washington St. - Shelby  
Plenty of FREE Parking Beside The Store! 487-4524

## Senior citizens planning trip to mountains

Senior citizens at the Depot will usher in the fall with a fall foliage excursion to Boone and Blowing Rock October 20.

Included in the trip will be a professional tour guide who will travel with them on the Blue Ridge Parkway to Linville Viaduct and Moses Cone House and other points of interest. After lunch, the group will visit outlet shops.

Cost of the one-day tour is \$17 per person and does not include lunch. Reservations must be made by October 9.

An end-of-summer parade of hats will feature the entertainment for the September 18 social at Kings Mountain Depot from 7:30-10 p.m.. The man and woman with the most unusual hat will win prizes.

LIB STEWART  
Social Notes

Admission to the dance is \$2, which includes refreshments.

Timothy Abel, noted songwriter and folk musician, will be featured in concert at Gardner-Webb's Dover Theatre Friday night at 8 p.m. The concert opens Gardner-Webb's theatre season. Tickets are \$2 for adults and \$1 for students and senior citizens.

The USDA commodities distribution for senior citizens will be held at the National Guard Armory, 300 Phifer Rd., Wednesday, September 16, from 9 a.m.-11 a.m. Items offered will be butter, corn meal, flour, apple sauce, pork, peanut butter, tomatoes and corn.

Long-time faculty member Dr. Robert L. Lamb has been appointed Dean of the new School of Divinity at Gardner-Webb College. On August 27, the Executive Committee of the G-W Board of Trustees formally approved a School of Divinity.

Rev. Tom Patterson, a former pastor, will preach on Homecoming Day September 27 at Macedonia Baptist Church. A covered dish luncheon will be served after the morning worship service.

ered dish luncheon will be served after the morning worship service.

# You know what's more addictive than food? The feeling of success.

*Weight Watchers showed me how to eat right and feel great!*

Food was always on my mind. All morning I'd think about lunch. Before bed, I'd want just one more snack. I tried controlling it on my own, but nothing worked.

Then I joined Weight Watchers.

Every step of the way, they gave me the support and encouragement I needed to succeed. But best of all, they gave me a plan I could live with. Now I know how to survive stressful days, eating out, and parties, all without giving up my favorite foods.

I've learned how to eat right, and I feel really great. Since joining Weight Watchers, this is the best I've ever looked. The only thing I crave now is more success.

**Half Off!**  
Join for only...  
**\$15**  
Then, pay just \$9 weekly.

Ask how you can save even more with our Special Price-Protection Plan going on now.

**Weight Watchers**

**Come to the Weight Watchers meeting nearest you.**  
NEW MEMBERS: PLEASE ARRIVE 30 MINUTES EARLY FOR REGISTRATION AND WEIGH-IN.

Phone and ask about Community meetings near you.	<b>SHELBY</b> Weight Watchers Center Market Place Shopping Center 1756 E. Dixon Blvd. Tue: 12:10 p.m., 7:00 p.m.* Wed: 9:00 a.m.* Thur: 5:45 p.m.*	<b>AT-WORK MEETINGS</b> Lose weight where you work. Weight Watchers will set up a meeting for you and your fellow employees. Call for further information.
--	--	---

\* Express Meeting

Call Toll Free  
**1-800-487-4777**

Home is where the heart is and if you have heart trouble, we can treat it real close to home.

One of the worst things about being ill is the feeling of being alone, isolated from the normal flow of events and activities that make up your life. It's a time when you need the comfort of loved ones, the support of family and friends. One of the best things about the Carolinas Heart Emergency Network is the fact that you can receive advanced, state-of-the-art treatment near your home. In fact, the Carolinas Heart Emergency Network is your assurance that you can get some of the most advanced treatment in the world. And you don't have to go halfway around the world to get it.

**KING'S MOUNTAIN HOSPITAL**  
739-3601

Alexander County Hospital-Taylorsville, NC • Anson County Hospital-Wadesboro, NC • Ashe Memorial Hospital-Jefferson, NC • Blowing Rock Hospital-Blowing Rock, NC • Caldwell Memorial Hospital-Lenoir, NC • Carolinas Medical Center-Charlotte, NC • Charles A. Cannon, Jr. Memorial Hospital-Banner Elk, NC • Cleveland Memorial Hospital-Shelby, NC • Crawley Memorial Hospital-Rolling Springs, NC • Davis Community Hospital-Statesville, NC • Elliott White Springs Memorial Hospital-Lancaster, SC • Gray Hospital-Morganton, NC • Hamlet Hospital-Hamlet, NC • Kings Mountain Hospital-Kings Mountain, NC • Lake Norman Regional Medical Center-Mooresville, NC • Lincoln County Hospital-Lincolnton, NC • Montgomery Memorial Hospital-Troy, NC • Orthopaedic Hospital of Charlotte-Charlotte, NC • Richmond Memorial Hospital-Rockingham, SC • Rutherford Hospital-Rutherfordton, NC • Sleep Memorial Hospital-Crossnore, NC • Stanly Memorial Hospital-Albemarle, NC • Union Memorial Hospital-Moore, NC • University Hospital-Charlotte, NC • Upstate Carolina Medical Center-Gaffney, SC • Valdese General Hospital-Valdese, NC • Watauga County Hospital-Boone, NC