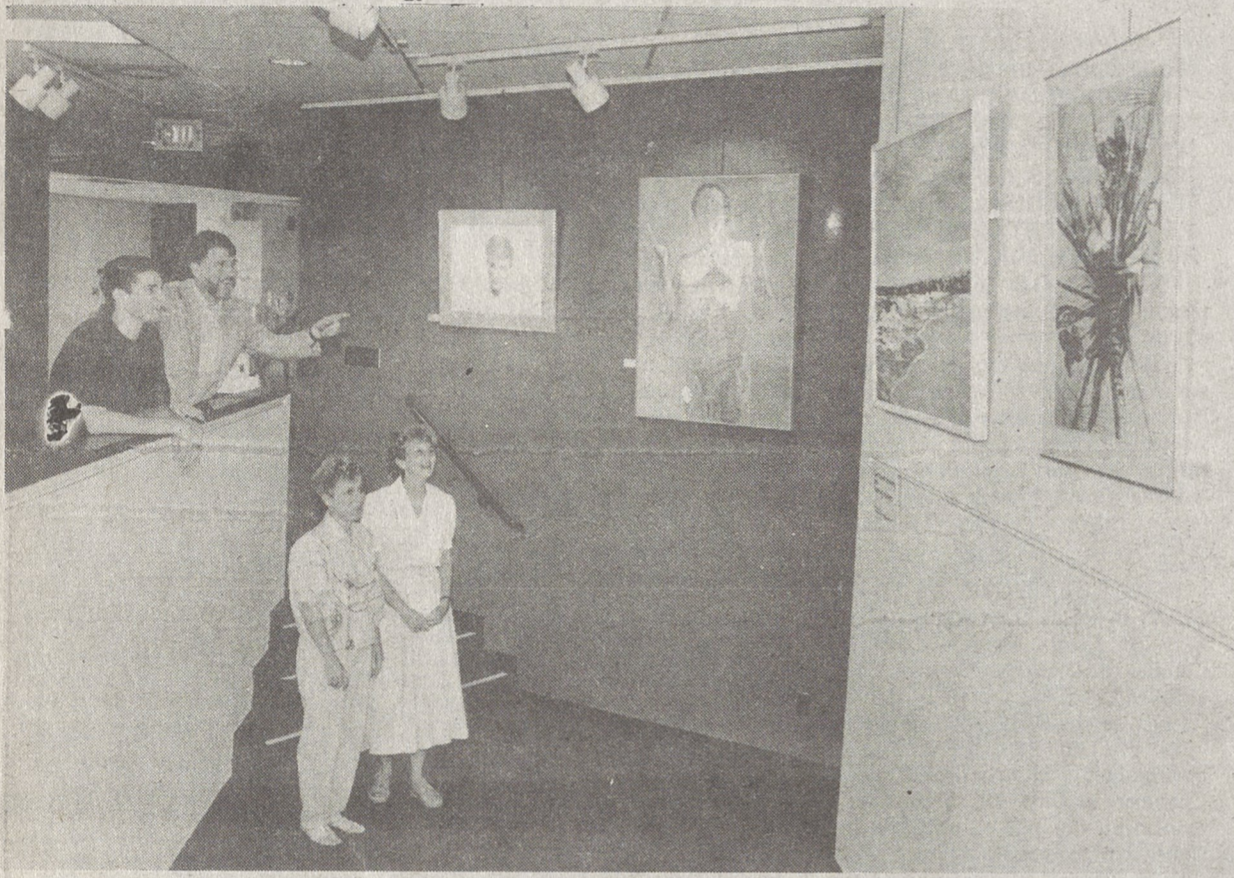


**STUDENT AWARD - Claude Waters, Assistant Administrator and Technical Director of Radiology at Cleveland Memorial Hospital, presents the 1992 Outstanding Clinical Student award to CCC Radiologic Technology graduate Steve McDowell. Assisting in the presentation is William Lewis, right, Administrator and Technical Director of Radiology.**



**ART EXHIBIT AT CCC - Cleveland Community College student Marty Lineberger of Lawndale, left, is joined by instructor Hal Bryant, students Betty Jordan of Shelby and Betsy Collins of Kings Mountain as they observe the August exhibit of curriculum art students in the Gallery.**

**Fall festival set in North Belmont**

It is fall festival time in Gaston County and the annual Punkfest will be held in the Gaston County Park at North Belmont, N.C., Hickory Grove Road, Saturday, Sept. 26, beginning at 9 a.m. and continuing until 6 p.m. Rain date is Sunday, Sept. 27, from 1 to 6 p.m. This is a family event with something for everyone. There'll be games and pumpkin painting for the children, special entertainment, local bands and a professional wrestling match. Admission is free.

**NOTICE OF REGISTRATION AND VOTING AIDS FOR ELDERLY AND HANDICAPPED VOTERS**

Pursuant to Public Law 98-435, the State Board of Elections, by and through its Executive Secretary-Director, hereby advises that certain modifications in North Carolina's voting registration procedures and facilities have been effectuated for the purpose of facilitating registration and voting by the elderly and handicapped citizens of the State. Please be advised:

(1) Registration facilities and polling places in most elections precincts are now physically accessible to the elderly and handicapped. In those instances where polling places cannot be made accessible, elderly and handicapped voters may vote ballots at curbside or request assignment to an accessible facility for the purpose of voting.

(2) Instructions on casting ballots, printed in large type, will be conspicuously displayed at each permanent registration facility and each polling place.

(3) Any voter is entitled to assistance in casting votes from the person of his or her choice.

(4) The opportunity to vote by absentee ballot is available. No notarization or medical certification is required of a handicapped voter with respect to an absentee ballot or application for such ballot. You may inquire as to absentee voting procedures by contacting your local board of elections.

**CLEVELAND COUNTY BOARD OF ELECTIONS**  
KMH-649  
9-10

**NOTICE OF ADMINISTRATION**

Having qualified as Executor of the Estate of Jeanette L. Mann, deceased, late of Cleveland County, North Carolina, this is to notify all persons, firms and corporations having claims against said estate to present them, duly verified, to the undersigned c/o William J. Waggoner, Attorney, 2500 Two First Union Center, Charlotte, NC, 28282, on or before the 3rd day of December, 1992, or this notice will be deemed in bar of their recovery. All persons indebted to said estate will please make immediate settlement with the undersigned.

This is the 24th day of August, 1992.  
Jacob L. Lackey, Executor  
KMH-646  
9-3,10,17,24

**Democrat rally slated in Shelby**

The Cleveland County Democratic Party will host the Democrats from McDowell, Polk and Rutherford counties in a joint four-county political rally and barbecue dinner on Saturday, Sept. 19, at 6 p.m. in the cafeteria of Shelby High School.

"Democratic Party enthusiasm is running pretty high this year and we are expecting a good turn-out," said Dean B. Westmoreland, chairman of the Cleveland County Democratic Party. "We've invited every candidate that can talk, shake hands, politick and eat barbecue to come. Many have already responded that they will be in town for the rally."

Also present will be "Bill" the official Cleveland County Democratic Party donkey mascot. He will be near the entrance for all to see and he is expected to bray at least once during the rally. There will be foot-patting music, valuable door prizes and delicious food.

Tickets are \$10 and may be purchased from each Democratic Party precinct chairperson, from Bobby Rogers at Bobby's Music Shop in Shelby, Joyce Cashion at Falls Superette in Kings Mountain and from Democratic Party Headquarters at 117 W. Warren St. between Sears and The Chamber of Commerce in Shelby.

For more information, call Westmoreland at 480-1992 or 937-7636.

**Revival scheduled at People's Church**

People's Church on Bessemer City-Kings Mountain Highway, 161 north, will hold revival services September 14-18.

Services are at 7 p.m. nightly. The public is invited.  
John Houze is pastor.

Fast Service **YES** Easy Terms

We like to say Yes! - Loans \$500 and up!

**SECURITY FINANCIAL SERVICE**

315 W. King St., Kings Mountain • 739-0166

**CAROLINA**

**CASUAL TRACTOR/TRAILER DRIVERS LONG DISTANCE**

Carolina Freight Carriers seeks Long Distance Tractor/Trailer Drivers to work as needed on a call in basis at its Cherryville, NC facility. Applicants must be over 23 years of age, D.O.T. qualified and have a CDL with hazardous materials and twins endorsements, as well as a clean driving record. Apply in person on Monday, September 14, 1992, from 9:00 am until 3:00 pm at the Personnel Department, Carolina Corporate Headquarters on Highway 150 East, Cherryville, NC.  
Equal Opportunity Employer - M/F

**Griffin's Credit Quick Auto Finance**

**CQAF**

Dependable, Affordable Transportation • Ask for Randy Williams  
Hwy. 321 Bypass, North, Lincolnton, NC  
735-3051 • Across from Wal-Mart

Bankrupt, no credit, slow credit, NO PROBLEM

- No Credit Hassles
- Reasonable Down Payment
- Low Weekly, Bi-Weekly, Monthly Payments
- Over 20 Quality Cars & Trucks To Choose From

Wouldn't you rather buy from an established dealership with a buy here pay here selection of vehicles.

Located at Griffin Buick, Pontiac, GMC Truck

**AUCTION**

**Clar-Mar Storage**

Saturday, Sept. 12 • 10:00 am

**Unit No. 8**

Furniture, 2 Cash Registers, Calculators, A Chain Hoist, Assorted Tools & Many More Misc. Items.

803 South Mountain St., Cherryville, NC  
**435-9776**

**ABSOLUTE AUCTION**

**Utility Equipment Sales, Inc.**

Friday, September 11th • 10:00 am  
1200 Linwood Rd., Kings Mountain, NC

**DIRECTIONS:** From I-85 take 74 West (Kings Mountain/Shelby Exit). Follow 74 Business (Kings Mountain) At 1st spotlight take a right (Cleveland Ave., Hwy. 161). At 1st spotlight turn right on Linwood Rd. Sale site is approximately 1 mile on the right.

**PARTIAL LISTING**

**ROLLING STOCK:** Clark Samaria HD Forklift (25 lift w/9 forks) Model C1200, Hyster Shop Forklift, Broderson RTR-70-1 B 4x4 Road Runner (Rotation 37" Extended Boom w/3 Section Telescopic Boom), 1969 Chevrolet C-60 w/ Pittman TC2FSDI Digger Derrick.

**WELDERS:** Miller CP-300 on wheels w/wire attachments, Miller CP-300 Arc Welder w/Millermatic 10E wire attachment on wheels, Hobart 300 amp, 230/460 volt w/Hobart 27 wire attachment, Welding Leads.

**SHOP EQUIPMENT & TOOLS:** Steel Shop Tables, Acy. Cart, Torches & Hoses, Dayton Commercial 3/4 hp 8" Bench Grinder, Racks & Stands, Gilson Champion Shop Heaters, Shop Fans, HD 5" Shop Vises, Hydraulic Hand Pump, HD Super Zip Cut Horizontal Chassis Drill, Fire Extinguishers, Model HV12 Band Saw, Solar 480 6/12 Volt Battery Charger, Stanley Hydraulic Bushwhacker, "C" Clamps, Bolt Bins, B&D Saw w/7-1/4" Blade (1-1/2hp), Hole Saws, Safety-Kleen Parts Washer, Homemade Steel I-Beam Hoists (15' high, 18' wide), Racine Hydraulic Chain Saw, Dillon Dynamometer (20,000 lb.), (2) Racine Hydraulic Concrete Breakers (HB35), B&D Professional Side Grinder, HD 1/2" Milwaukee Drill, Stanley Hydraulic Chain Saw, Model 5448 Micrometer Adjusting Torque Wrench (3/4" drive), Air Chisels, Air Hammers, Hydraulic Paint Guns, 14" Metal Cutting Cut Off Wheels, Ground Rod Drivers, Racine Hydraulic Brush Cutters, Racine Hydraulic Hole Tamper, Baldor 3 Phase 25 hp Air Compressor.

**PARTS & SUPPLIES:** Hydraulic Hoses on reels, Assortment of Bolts, Nuts, Washers & Screws, Wire on Reels, Hydraulic Couplings (1/4" to 1", New Sky Worker Buckets (fits High Ranger), Sheets - Mesh Wire, Truck Bumpers, Hydraulic Pumps, Solid Plugs, Metal Parts Shelves, Simplex Time Clock, Firestone LT235/65 R15 M/S Tire, Misc. Threaded Rod Stock, Electron Weld Band Sawblades (new in boxes), Transmission Fluid, Hydraulic Connectors, Flaps for Tires, Lights inc. Amber Clear, Dome, Porchlights, Marker Lights, Pop-in Lights, Bar Lights & Strobe Hydraulic Valves.

**OFFICE EQUIPMENT:** (2) 2 drawer legal file cabinets, (8) Desks, (15) Chairs (office), AT&T Spirit Phone System, Sharp Calculators (5), (2) 6' Folding Tables, Sharp UX160 Fax Machine, Xerox 6010 Memorywriter, Spolan SJ 92X12A Computer, AVT America Co. Monitor, Brother HR40 Daisy Wheel Printer, Sekosha Matrix Printer, Xerox 1012 Copier, (6) Folding Chairs, Executive Desk & Chair, Boston 2615 Paper Cutter, Office Accessories, (8) File Cabinets.

**MISCELLANEOUS:** Ladder, Scrap Iron & Steel, Binders, Drop Cords, (5) 15-19.5 NMS 12 Ply Tires, Jack Stands, Welding Helmets, Parts Books, Metal Parts Shelves, Simplex Time Clock, Firestone LT235/65 R15 M/S Tire, Misc. Angle Iron, Sheet Iron & Square Tubing, Roll Back Bed, Utility Beds.

**AUCTIONEER'S NOTE:** 1st National Bank of Shelby, NC has commissioned Elliott/Dixon Associates Inc. to auction the assets of Utility Equipment Sales, Inc.

**SALE CONDUCTED BY:**  
**ELLIOTT/DIXON ASSOCIATES, INC.**

Auctioneers: Joyce D. Dixon NCAL #2949 • Ralph S. Elliott NCAL #3507  
1507 Burke Rd., Shelby, NC 28152 • Auction Firm License #3806 • (704) 481-1018 • (704) 484-0102  
Announcements made day of auction superceded printed matter. Member NC & National Auctioneer Associations  
Food provided by Dayne's Shingle Shack (Dot and Dayne Grigg)

**RAY MCKENNEY CHEVROLET-GEO** presents

**PRICE BUSTERS**

**Nobody Walks Away** "You Drive Away with a Smile!"

**NEW CAR RATES As Low As 8.9% APR** Up to 60 Months to qualified buyers

<p><b>NEW 92 GEO STORM</b></p> <ul style="list-style-type: none"> <li>Overdrive Transmission • AM-FM Cassette • Floor Mats</li> <li>Air Conditioning</li> </ul> <p><b>\$9,897 or \$195<sup>00</sup> PER MONTH</b></p> <p>\$500 Down, 8.9% APR O.A.C., plus tax &amp; tag. Rebate to dealer.</p>	<p><b>92 CHEVROLET S-10 TAHOES</b></p> <ul style="list-style-type: none"> <li>2.8L V-6 • Overdrive Transmission • AM-FM Cassette • Air Conditioner • Rear Sliding Window</li> </ul> <p><b>\$8,995 or \$176<sup>00</sup> PER MONTH</b></p> <p>8.9% \$500 Down, plus tax &amp; tag O.A.C.</p>
<p><b>NEW 92 GEO METRO HATCHBACK</b></p> <ul style="list-style-type: none"> <li>5 Speed • Air Conditioning • AM-FM Stereo w/Cassette</li> </ul> <p><b>\$7,659 or \$148<sup>00</sup> PER MONTH</b></p> <p>Price includes rebate. 8.9% APR, 60 mos. \$500 Down plus tax &amp; tag O.A.C.</p>	<p><b>NEW 92 CHEVROLET LUMINA EURO</b></p> <p>4 Doors, 2 Doors. ALL MUST GO!</p> <p><b>\$14,189 or \$273<sup>00</sup> PER MONTH</b></p> <p>Price includes rebate. 8.9% \$1000 down plus tax &amp; tag O.A.C.</p>

<p><b>92 CHEVY CORSICA</b></p> <ul style="list-style-type: none"> <li>AUTO TRANSMISSION</li> <li>AIR CONDITION</li> <li>AM/FM STEREO</li> <li>3.1 LITRE V-6</li> </ul> <p><b>\$9,995</b> or <b>\$205 per mo.</b></p> <p><b>YOUR CHOICE</b></p> <p>• REMAINING FACTORY WARRANTY \$500 Down, 60 Mos., 10.5% APR Plus Tax, Tag, O.A.C.</p>	<p><b>92 CHEVY CAVALIER RS</b></p> <ul style="list-style-type: none"> <li>AUTO TRANSMISSION</li> <li>AIR CONDITION</li> <li>AM/FM STEREO</li> <li>4-DOOR</li> </ul>
---------------------------------------------------------------------------------------------------------------------------------------------------------------------------------------------------------------------------------------------------------------------------------------------------------------------------------------------	---------------------------------------------------------------------------------------------------------------------------------------------------------------------

<p><b>91 GEO METRO</b></p> <ul style="list-style-type: none"> <li>AUTO TRANSMISSION</li> <li>AM/FM STEREO</li> <li>AIR CONDITION</li> </ul> <p><b>\$119 PER MONTH</b></p> <p>60 MONTHS SALE PRICE \$5995</p>	<p><b>91 CHEVY CAVALIER</b></p> <ul style="list-style-type: none"> <li>AUTO TRANSMISSION</li> <li>AIR CONDITION</li> <li>AM/FM STEREO</li> </ul> <p><b>\$176<sup>00</sup> PER MONTH</b></p> <p>60 MONTHS SALE PRICE \$8388</p>	<p><b>91 GEO PRIZM</b></p> <ul style="list-style-type: none"> <li>AUTO TRANSMISSION</li> <li>AIR CONDITION</li> <li>AM/FM STEREO</li> </ul> <p><b>\$189 Per Mo.</b></p> <p>60 MONTHS SALE PRICE \$8995</p>	<p><b>92 CHEVY CAPRICE</b></p> <ul style="list-style-type: none"> <li>4 TO CHOOSE</li> <li>PWR SEATS</li> <li>PWR WHEELS &amp; FLOORS</li> <li>ALLOY WHEELS</li> <li>TLT &amp; CRUISE</li> </ul> <p><b>\$14,495</b></p>
--------------------------------------------------------------------------------------------------------------------------------------------------------------------------------------------------------------	--------------------------------------------------------------------------------------------------------------------------------------------------------------------------------------------------------------------------------	------------------------------------------------------------------------------------------------------------------------------------------------------------------------------------------------------------	-------------------------------------------------------------------------------------------------------------------------------------------------------------------------------------------------------------------------

<p><b>1990 FORD MUSTANG GT</b></p> <ul style="list-style-type: none"> <li>5.0L 5 SPD. • POWER WINDOWS</li> <li>POWER LOCKS</li> </ul> <p><b>SALE PRICE \$10,995</b></p>	<p><b>1990 CADILLAC SEDAN DEVILLE</b></p> <p>ALL THE OPTIONS</p> <p><b>SALE PRICE \$16,995</b></p>	<p><b>1988 PLYMOUTH RELIANT</b></p> <ul style="list-style-type: none"> <li>4 DR., 5 CYL. • AUTO., AC</li> <li>AM-FM RADIO</li> </ul> <p><b>SALE PRICE \$3,995</b></p>	<p><b>1989 DODGE DAYTONA</b></p> <ul style="list-style-type: none"> <li>AUTOMATIC • TILT WHEEL</li> <li>CRUISE CONTROL</li> </ul> <p><b>SALE PRICE \$5,495</b></p>
-------------------------------------------------------------------------------------------------------------------------------------------------------------------------	----------------------------------------------------------------------------------------------------	-----------------------------------------------------------------------------------------------------------------------------------------------------------------------	--------------------------------------------------------------------------------------------------------------------------------------------------------------------

<p><b>1991 CAMARO RS</b></p> <ul style="list-style-type: none"> <li>V6, AUTO TRANS • AC, T-TOPS</li> </ul> <p><b>SALE PRICE \$10,695</b></p>	<p><b>1989 FORD COUNTRY SQUIRE WAGON LX</b></p> <ul style="list-style-type: none"> <li>AUTO., AC</li> <li>AM/FM CASSETTE</li> <li>CRUISE CONTROL</li> <li>TRT WHEEL</li> <li>3 BUCK MORE</li> </ul> <p><b>SALE PRICE \$8,995</b></p>	<p><b>1988 FORD AEROSTAR XLT VAN</b></p> <ul style="list-style-type: none"> <li>AUTO TRANS • AIR COND.</li> <li>POWER WINDOWS &amp; LOCKS</li> <li>CRUISE CONTROL</li> <li>3 PASSENGER</li> <li>3 "LOADS"</li> <li>V-6, AC</li> </ul> <p><b>SALE PRICE \$9,995</b></p>	<p><b>89 PONTIAC GRAND PRIX</b></p> <ul style="list-style-type: none"> <li>POWER WINDOWS • AND LOCKS</li> <li>CRUISE CONTROL • AND MORE</li> <li>V-6, AC</li> </ul> <p><b>SALE PRICE \$9,295</b></p>
----------------------------------------------------------------------------------------------------------------------------------------------	--------------------------------------------------------------------------------------------------------------------------------------------------------------------------------------------------------------------------------------	------------------------------------------------------------------------------------------------------------------------------------------------------------------------------------------------------------------------------------------------------------------------	------------------------------------------------------------------------------------------------------------------------------------------------------------------------------------------------------

\* PAYMENTS BASED ON \$500 CASH OR TRADE. APR RANGE FROM 11.95% TO 14.50% O.A.C.

Bill Martin Gen. Mgr.  
Tim Peeler Sales Mgr.  
SALES STAFF  
Bill Freeman  
Randy Knight  
Blair Thornburg

**435-3277**  
1-800-273-3270  
Mon.-Fri.  
8:30-8:00  
Sat. - 8:30-5:00

**RAY MCKENNEY** CHEVROLET GEO  
HWY. 150, CHERRYVILLE, N.C.