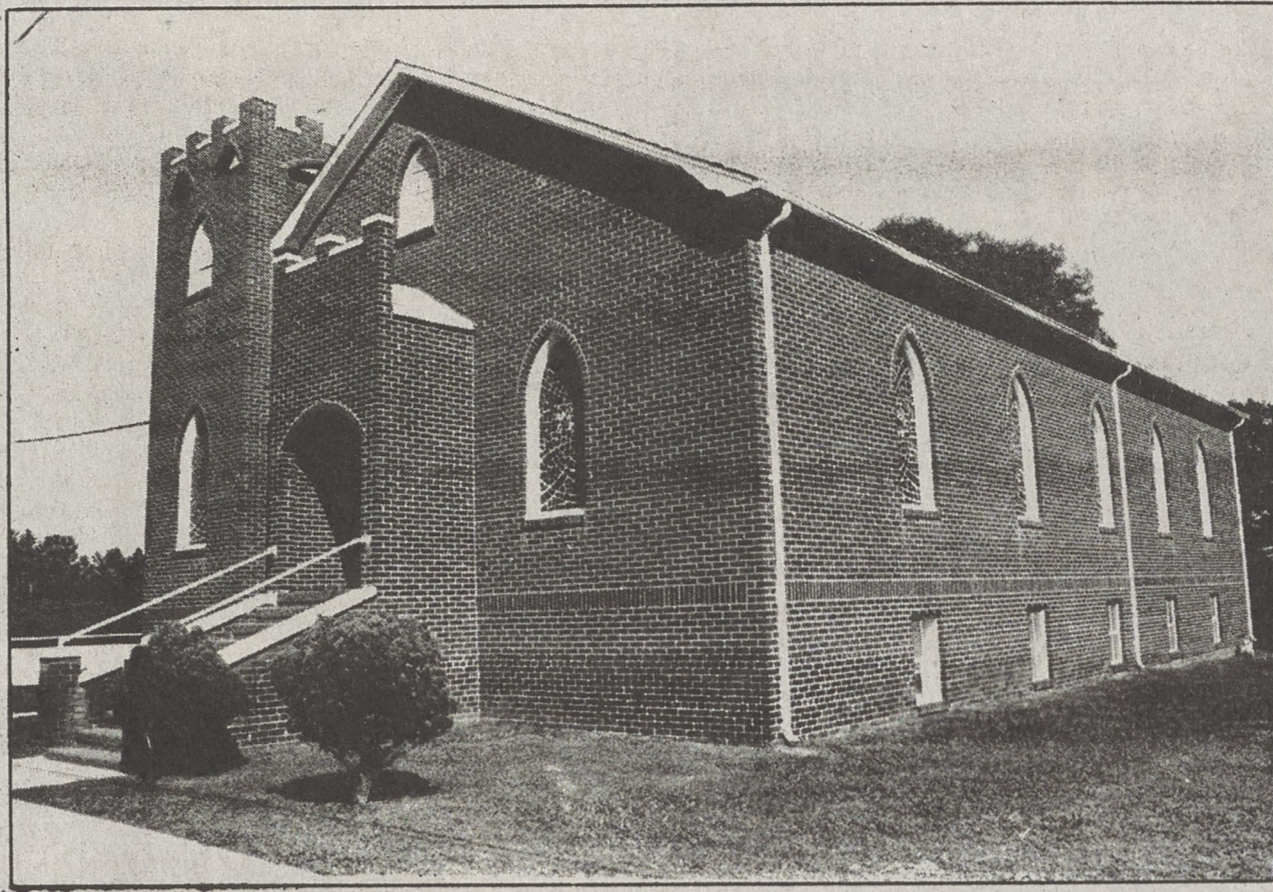


Kings Mountain First Church of the Nazarene, area pastors, and these sponsoring firms invite you to attend the church of your choice regularly...



KINGS MOUNTAIN FIRST CHURCH OF THE NAZARENE

405 Cherokee Street, Kings Mountain, NC
704-739-5363

Pastor.....Scott Wade
Children's Director.....Debbie Baity
Youth Director.....Susan Mauney
Sunday School Superintendent...Mike Galloway

Sunday School.....10:00 AM
Morning Worship.....11:00 AM
Evening Worship.....6:00 PM
Wednesday Service.....7:00 PM



SCOTT WADE

A BRIEF HISTORY:

Kings Mountain First Church of the Nazarene had its beginnings some eleven months before it was organized. Rev. W. Blanchard Horne along with a few faithful friends, Jake Black and C.B. Todd among others, had joined the First Church of the Nazarene in Charlotte.

REV. W. BLANCHARD HORNE sensed that the Lord was leading him to organize a church in his home town of Kings Mountain. Rev. C.E. Shumake, pastor of the Charlotte congregation, and Rev. Horne contacted the District Superintendent of the Southeast Atlantic District of the Church of the Nazarene. The district furnished a tent and Rev. Horne held the first meeting in 1939.

During this time, a storm destroyed the old tent, and the young band of Nazarenes were left without a place to meet. Thanks to the generosity of a sister holiness church, pastored by Rev. John L. Gregory, the group continued to worship together. In just a few weeks, lumber was purchased and a board tabernacle was raised. Shouts of joy and praise to God could be heard all around that tabernacle, with sawdust floors and potbellied stove. The young Nazarenes gave God the glory for providing their needs.

After several outstanding revivals were conducted by Rev. Paul Pitts and Rev. Harry Crump, Kings Mountain First Church of the Nazarene was organized by Rev. Raymond Browning on August 3, 1940. Rev. Horne served as the pastor.

The church reported to the 1940 Southeast Atlantic District Assembly on October 10, 1940. Rev. Horne was granted his first Nazarene Minister's License, and his character was passed by official action of the Assembly.

During the first six years, eighteen ministers of the Gospel were called of God from that baby church. Great revivals moved the congregation and city. Generous offerings were received to support the work of Christ around the world.

In 1946, our Founding Pastor received a call to First Church of the Nazarene in Charlotte.

REV. HARRY CRUMP came to pastor Kings Mountain First Church of the Nazarene in 1946. During his ministry, the church continued to see glorious days. By 1949, the church was one of the strongest in the North Carolina District. It was with Rev. Crump's leadership that the present structure was built. Brother Crump pastored until 1951.

REV. C.E. MCKENZIE assumed pastorate of our church in 1951. The Sunday School was strengthened and 15 members joined the church during his tenure.

REV. A.D. HOLT had a brief ministry in Kings Mountain in 1953. Three members joined the church during that year.

REV. R.J. ESSARY began his ministry to our church in 1953. Under his Godly leadership, the Sunday School Roll grew to its highest ever level. 98 members joined the church while Rev. Essary was pastor. He also directed a much-needed remodeling of the church and parsonage. In 1961, our church regrettably bid farewell to Brother Essary as he moved to another pastorate.

REV. H. G. CLAYTON came to pastor our congregation in 1961. Although he was only here a few years, his ministry to us was appreciated.

REV. C.A. BOST moved to the Kings Mountain First Church of the Nazarene in 1966. The church enjoyed thirteen years of Godly leadership under Rev. Bost. While he was here, the mortgage was burned. 73 members joined the church.

REV. GEORGE NEIGHBORS began his ministry to us in 1979. God enabled Brother Neighbors to accomplish much during his two years in Kings Mountain. Another remodeling effort was completed, and a solid youth ministry was initiated.

REV. L.K. FANNIN came to Kings Mountain in 1981. Brother Fannin was able to steer us through some difficult days, under his leadership, the facility was further updated. We appreciate his ministry in our behalf. Rev. Fannin received 27 members into the church.

REV. JOHN C. FOLTZ served as our pastor from 1987 until 1989. During this time, we struggled through several catastrophes. Roofs were replaced, a collapsed ceiling was repaired and a hurricane blew through town. Brother Foltz remained steady and constant in his leadership through these hard days. His compassion and mercy helped many of us through personal tragedy, as well.

REV. SCOTT WADE began his ministry in our church. His first Sunday as a pastor was behind the pulpit of Kings Mountain First Church of the Nazarene on November 5, 1989. We thank God for bringing pastor and people together...to this moment in our history.

Our prayer is that we will continue to be a shining light of hope for all in Kings Mountain who need the touch of the Master. May we today and always "proclaim liberty throughout the land" to all who are oppressed.

- Amity Finance**
of Kings Mountain
739-1311
- Hardee's**
of Kings Mountain
- Plonk Tire**
Wray and Tim Plonk
739-0193
- Kings Mountain Hospital**
739-3601
- Nationwide Insurance**
306 E. King Street
739-3953
- Paul's Seafood**
Paul and Joyce Hord
739-1631
- The Printing Press**
Canterbury Road
739-0333
- Mac's Grocery**
900 N. Piedmont Ave.
739-3391
- Weiner Works**
Kings Mountain Plaza
739-7691
- Parkdale Mills, Inc.**
#5 & #19
Management and Employees
- Harris Funeral Home, Inc.**
Ollie Harris and Staff
- The Sub Factory**
124 A. West Gold Street
739-4255

- Winn Dixie Stores and Employees**
- Setzer's Discount Auto Parts**
1301 S. Battleground Ave.
734-0131
- Jones Intercable**
Management and Employees
- Allen's Flower Shop, Inc.**
Management and Staff
- Grover Industries**
"Where Friendly People Work"
- Wade Ford**
"You Can Count On Wade"
- Harris Teeter Supermarket**
and Employees
- First Carolina Federal Savings Bank**
Since 1907
739-4781 • 482-0222 • 865-1111
- Kerns Trucking, Inc.**
"You Call - We Haul"
739-4747
- Mountain View Farms**
Cameron Ware
739-5528
- Peggy's Restaurant**
Management and Employees
- Loves Fish Box**
1104 Shelby Road

Attend Church Regularly

...and read your Bible daily