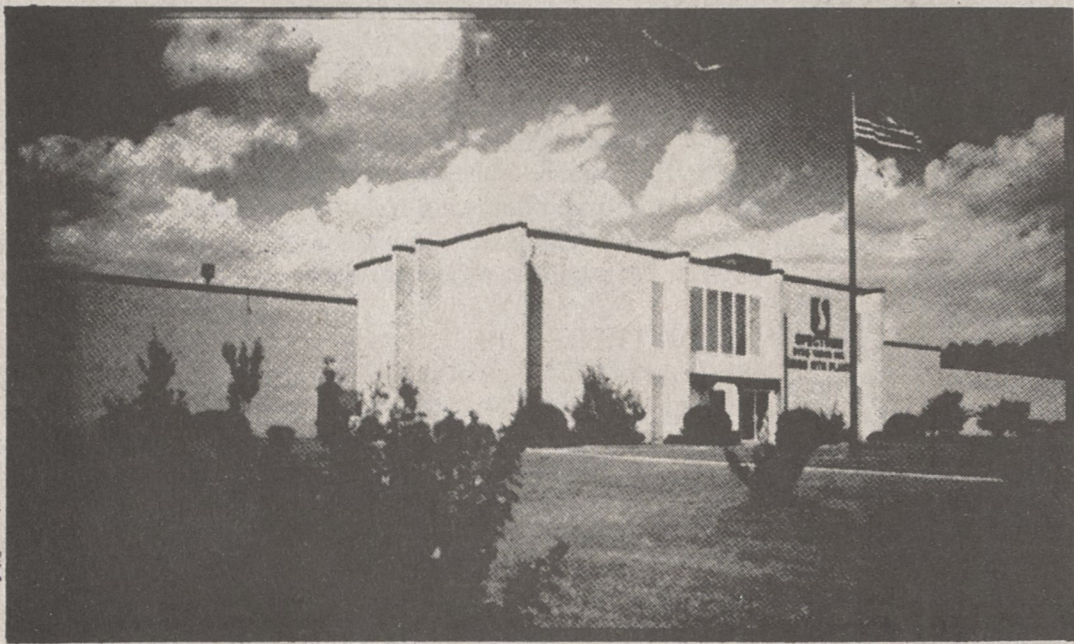


Spectrum Dyed Yarns, Inc.



...for all your packaged-dyed yarn needs.



**P.O. Box 509
Kings Mountain, NC 28086
(704) 739-7401**



**1450 Broadway
New York, NY 10018 (212) 391-8181
Telex: RCA 220 855 (SPEC UR)**

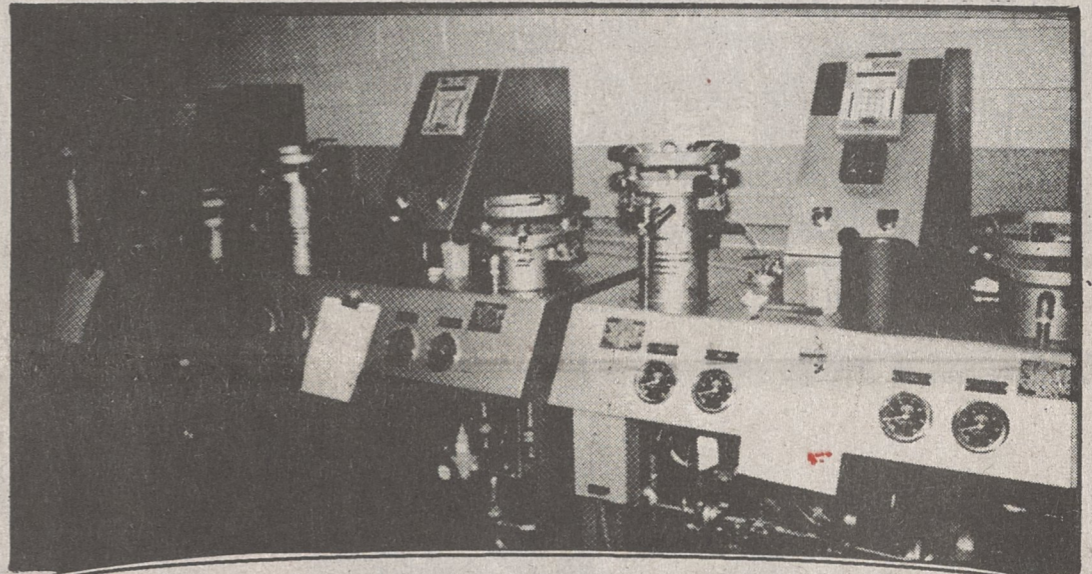
**P.O. Box 1308
Hickory, NC 28603
(704) 322-1663**

TO OUR EMPLOYEES

Thank You for a Job Well Done. You are the Men and Women that make the American Textile Industry the World's Leader.



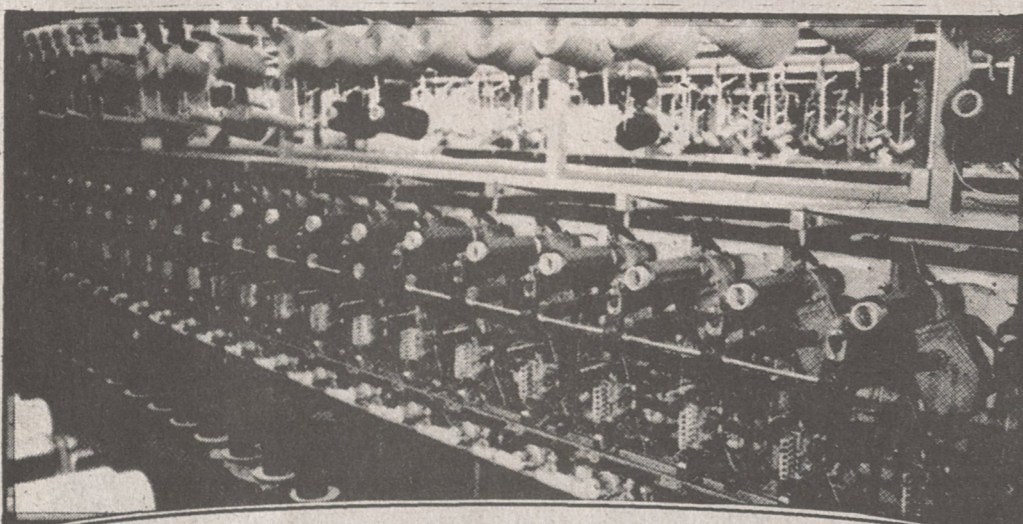
Transportation



Color Matching Laboratory



Computerized Management Information Systems



For Spun Yarns - Foster 102 and Roto-Coner 44 Winders for
Filament Yarns - Jumbo-Size Schweiter Winders



Micro-Processor Controlled Gaston County High-Pressure
Package Dye Machines

Spectrum Today

Spectrum Dyed Yarns, Inc. today is a major dyed yarn sales company servicing the knitting, weaving and sewing thread markets. Spectrum's two manufacturing facilities are located in Kings Mountain, NC and Hickory, NC. Kings Mountain is primarily a spun yarn dyeing plant and Hickory a textured filament polyester yarn dyeing plant. The Company's product mix is:

Cotton	Plied and single end yarns for sweaters, sportswear, and upholstery.
Poly/Cotton	Plied and single end yarns for mens', ladies', and childrens' apparel.
Spun Polyester	Plied and single end for apparel and upholstery.
Spun Rayon	Coarse count plied yarns for upholstery.
Textured Filament Polyester	Regular textured and air-entangled for apparel, upholstery, hosiery, shoelaces, etc.
Textured Filament Polyester Sewing Thread	A complete range of yarns for the commercial sewing markets.

The Kings Mountain plant is 175M square feet and the Hickory plant is 135M square feet. The company has over 500 employees operating twenty-four hours a day, seven days a week. Total production is in excess of 800M pounds of yarn per week depending on product mix.

All dyeing equipment is high-pressure and computerized. Foster 102 winders and roto-coners are utilized in the winding of spun yarns. Schweiter and Schraer winders are utilized in the winding of textured filament polyester.

All color matching is computerized for quick response and consistent formulations. Thorough color testing is conducted in a complete quality control center. The exact standards, as determined by your end-use requirements, are measured and adhered to for every dye lot prior to shipping. Color fastness, wash fastness, bulk-level...whatever. Exact specifications rigidly met. Production flow is controlled and monitored by Data General MV10000 computers and appropriate software to assure accurate order tracking, quick response, and on-time delivery.

Sales offices are located at 1450 Broadway, New York, NY and in Kings Mountain, NC. A full staff of sales and customer service personnel are available at all times. At both locations we have the finest color libraries in the industry - 18,000 plus colors!

This is SPECTRUM TODAY... a diversified and dependable quality resource in the yarn dyeing industry.

**You Buy It, We'll Dye It!
Spectrum Today...And Tomorrow, Too**