

# Mountaineers drop two to Green Wave

Kings Mountain High's basketball coaches were disappointed with the final result, but both Tony Leigh and Larry Sipe were pleased with the efforts their teams gave in narrow opening-season losses to good Ashbrook teams Monday night at the KMHS gym.

Both KM teams blew half-time leads to lose by three points. The girls fell 55-52 and Ashbrook blazed away from the outside in the second half; and the boys saw the tall Green Wave come back from a 12-point halftime deficit to win 68-65.

The Mountaineers' Bryan Leftwich hit six straight 3-point field goals to lead Sipe's charges to a 41-29 lead at intermission. But Ashbrook's 6-5 David Taylor held Leftwich scoreless in the second half.

Two other key factors in the Mountaineers' loss were foul trouble and their inability to score from the charity stripe. The Mountaineers hit only 8 of 18 from the line (44 percent) and hit 25 of 61 from the floor (41 percent).

"Taylor, who is really quick, kept a hand in Bryan's face the second half," said Sipe, "and Eric Tate picked up his fourth foul early in the third quarter and I had to take him out. When Ashbrook was making their big run I put him back in and he picked up his fifth foul - still in the third quarter."

Overall, though, the Mountaineers played an outstanding game against a team which is a preseason favorite to make a run for the state 4-A championship. The Green Wave's 6-8 standout Skipper Youngblood scored 18 points to lead the scoring effort, and Taylor and Jakob Bron added 14 each.

Despite being shut out in the second half, Leftwich led the Mountaineers with 18. Albert Perkins and Steve Surratt added 12 each and Donny Minor came

off the bench to score 10.

"I felt like we played a good hard basketball game," said Sipe. "Even at the end we still had two good shots at the basket to tie the game and send it into overtime. I told the kids at halftime and at the end of the game that you have to play 32

minutes. In the first half we were almost flawless. We were playing a trapping defense, had some steals and our jump shots were falling. But the second half was almost an entirely different basketball game. We

See Ashbrook, 12-A



Kings Mountain's Donny Minor (45) makes a strong inside move for two of his 10 points in Monday night's loss to Ashbrook at the KMHS gym. Kings Mountain plays at Clover Friday.

## Pick Your Payment!

Formerly Shelby Mazda  
New Inventory  
Arriving Daily

**\$129**  
per month  
New Mazda B2300

Pick The Price  
& Payment  
You Want To  
Fit Your Budget

Buy From  
Vester Mazda  
We'll Pay Off  
Your Trade-in

NEW MAZDA MILLENNIA  
Life Time Warranty  
Loaded With Luxury Accessories



NEW MAZDA B2300 SE SPORT TRUCK  
Life Time Warranty  
Air, AM/FM Stereo Cassette, Power Steering, SE Sports Package



MAZDA PROTEGE DX  
Automatic, Air, AM/FM Stereo Cassette,  
Power steering, Convenience Package



1-800-280-6771  
704-482-6771 1843 East Dixon Blvd. • Shelby, NC  
Mon. - Fri.: 8:30 - 7:00, Sat.: 9:00 - 5:00

Sale price after factory incentive &/or discount. Millennia - Closed-End Lease, 12,000 miles per year. B2300 - Closed-End Lease, 15,000 miles per year. Lessees require \$2000 CAP Reduction Cost. 1st payment & refundable security deposit at lease signing. \$10 per mile for excess miles. Protege Sale Price - \$18,300, 39% cash or trade, 3.25% APR for 60 Months. With approved credit. \*Factory Program Vehicle. In stock units only. Tax, tags, and acquisition fees not included. Call for details.

### KMHS fall sports banquet Tuesday night

Kings Mountain High's annual fall sports banquet will be held Tuesday at 6:30 p.m. in the school cafeteria.

Tickets are on sale in the main office for \$7 each. Athletes from the football,

soccer, girls tennis, girls volleyball, cross country and cheer-leading squads will be recognized.

# DONALD

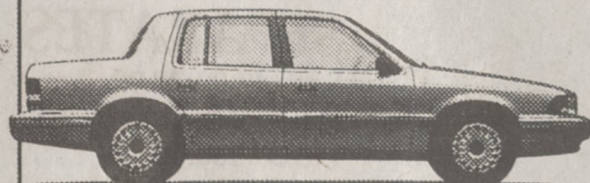
CHRYSLER Plymouth Dodge Jeep EAGLE

## GREAT CHRISTMAS PRESENTS!!!

1989 ESCORT GT A/C, AM/FM, Local Car <b>\$3741</b>	1988 LEBARON Auto, A/C, AM/FM <b>\$3,983</b>	1989 RANGER XLT A/C, AM/FM/Cass. <b>\$4494</b>	1989 5TH AVENUE Leather, Loaded <b>\$5,284</b>
1989 CARAVAN Auto, A/C, Low Miles <b>\$6,967</b>	1989 GRAND WAGONEER V8, Leather 4x4 <b>\$9,618</b>	1991 LASER TURBO Auto, Pwr. Pkg., CD, 29K Mi. <b>\$10,459</b>	1990 TOWN & COUNTRY Leather, Dual A/C <b>\$12,566</b>
1990 D150 CLUB CAB 4X4, V8, Auto, A/C <b>\$11,875</b>	1993 CONCORDE Loaded, 26,000 Mi. <b>\$16,936</b>	1993 WRANGLER Hard Top, A/C, 6 Cyl. <b>\$15,912</b>	1994 RAM 1500 4X4 V8, Long Bed, A/C <b>\$17,584</b>

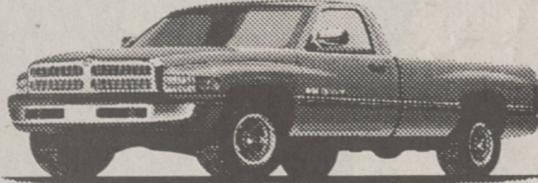
## THIS WEEK'S SPECIAL - YOUR CHOICE!

1995 PLYMOUTH ACCLAIM  
A/C., AM/FM/Cass, Auto #2439



**\$11,994 or \$199/Mo.**

1995 RAM 1500 SLT  
V-8, A/C., Auto, A/C, Pwr. Pkg., Tilt, Cruise



**\$17,994 or \$299/Mo.**

**LINCOLN**  
1601 E. Main St. - Across From Comfort Inn  
(704) 732-1890

Financing  
As Low As  
3.9% APR

Ask About Our  
Credit  
Rebuilder  
Program

\$800 Down Plus, Tax, Tag, DOC. 9.9% APR. 89's - 36 mo., 91's - 48 mo., 92's - 54 mo.

**ARNOLD'S**  
Gift Gallery

Everyone  
Should Have A  
Gift From  
Arnold's Gift  
Gallery Use  
Your  
Diamond Card

- Collectibles Enesco Ornaments 1994
- Bears of all shapes and sizes
- Cow Town Collectibles
- Precious moments
- Fenton
- Sports Impressions

Select  
Merchandise  
At  
Discount  
Prices

226 Washington Street  
Shelby, N.C.  
**481-9353**