

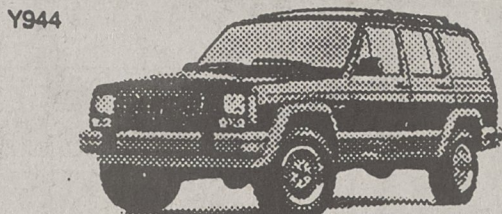
1995 CHRYSLERS & PLYMOUTHS BELOW FACTORY INVOICE! SAVINGS LIKE NEVER BEFORE!

OVER STOCKED!

OVER 300 NEW CARS, VANS AND JEEPS
IN STOCK. WE'VE CUT PRICES BELOW
INVOICE TO SELL DOWN NOW! OFFER
ENDS SUNDAY, JANUARY 29, 1995.

HURRY!

'95 JEEP CHEROKEE



6 cyl., A/C, Cassette

\$15,999

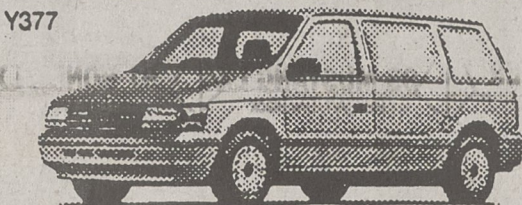
'95 CIRRUS



Loaded, LX Model

\$239 / Mo. Lease

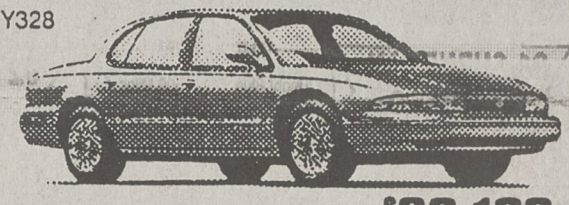
'95 VOYAGER



V-6, A/C, Cassette
COMPARE!

\$15,999

'95 LHS



List Price **\$30,190**
Hunter Disc. **\$5,191**

Price **\$24,999**

\$1250 cash down on lease payment + tax, license and fees. \$400 college grad. & 1st time buyer.

OVER 200 XTRA CLEAN TRADE-INS

\$4990 & UNDER

83 Olds Cutlass Supreme	\$2990
88 Chrysler 5th Ave.	\$2990
88 Pontiac LeMans	\$3490
88 Olds Ciera	\$3990
88 Mercury Cougar	\$3990
88 GMC 3/4 Ton Van	\$3990
85 Buick Century Low Miles	\$4490
87 Dodge Car & Van	\$4990
87 Ford Escort G	\$4990
88 Dodge Spirit	\$4490
80 Mercury Topaz	\$4990
85 Buick Century Limited	\$4990
89 Hyundai Excel	\$4990
81 Ford Escort LX	\$4990

IMPORTS

81 Mitsubishi Mirage	\$5490
88 Acura Integra LS	\$7990
88 Toyota Supra	\$7990
81 Subaru Loyale SW	\$7990
81 Subaru Loyale SW	\$7990
82 Toyota Corolla DX	\$8490
82 Nissan Sentra	\$7990
88 Toyota Cressida	\$10,490
81 Mazda 828 LX	\$10,490
82 Toyota Corolla LE	\$10,990
80 Nissan Maxima GXE	\$11,990
82 Nissan 240 SX	\$12,550
82 Toyota MR2 T-Top	\$13,990
84 Toyota Camry LE	\$16,990
84 Honda Accord EX	\$17,990

DOMESTICS

88 Pontiac Gran Prix	\$5990
80 Plymouth Sundance	\$5990
88 Cadillac SED Deville	\$6990
81 Chev. Corsica LT	\$7990
83 Ford Escort LX	\$7990
82 Olds Ciera	\$8990
82 Dodge Dynasty	\$8990
81 Olds Cutlass Supreme	\$9490
84 Plymouth Sundance	\$9490
81 Mercury Grand Marquis	\$9990
83 Dodge Spirit	\$8990
84 Plymouth Acclaim	\$9990
83 Buick Skylark Ltd.	\$10,990
83 Pontiac Gran Prix	\$11,440
82 Cadillac SED Deville	\$14,990

TRUCKS & VANS

81 Chevrolet C-10 Truck v-8	\$3990
88 Toyota Hard Body	\$4990
80 Mazda B2200 Truck	\$6990
89 Ford Bronco II 4x4	\$7990
88 Cherokee Pioneer	\$7990
82 Chevrolet S-10 Truck	\$9490
80 Jeep Cherokee 4x4	\$9990
80 Cherokee Laredo 4x4	\$10,490
81 Chevrolet Astro Conv. Van	\$10,990
81 Dodge Caravan LE	\$11,990
82 Ford Aerostar XLT	\$13,990
82 Toyota 4x4 Truck	\$13,990
84 Jeep Cherokee Sport	\$16,990
84 Plymouth Voyager SE	\$18,990
83 Grand Cherokee Laredo P290	\$19,990

POLICE

From Page 6-B

East Gold Wesleyan Church reported that someone took a Camcorder and camera bag from the church office. The equipment was valued at \$600.

Kings Mountain Community Center reported a bomb threat made by a caller who said a bomb would go off in the building on January 24. Officers checked the building and found no explosives.

Revco Drugs, 812 W. King St., reported that a customer took Polaroid film and a Gemini Universal remote without paying for the items.

Al Brackett Jr., 1012 N. Piedmont Ave., reported that someone rocked his vehicle doing \$350 damage to the windshield and front fender.

W.P. Tyson, 344 Goforth Road, said that someone broke into his 1989 Ford

and took a watch, handbag, assorted credit cards and a brown wallet. Damages were estimated at \$150. The incident happened at the parking lot of Movie Palace.

Kenneth Roberts, 917 S. Battleground Ave., reported larceny of a Briggs and Stratton water pump valued at \$250.

Joan ne L. Short, 407 Gillespie St., reported that a dog attacked her small dog at her residence.

WRECKS
JANUARY 24

Sgt. James Camp said that a 1987 Chevrolet operated by Lela Whetstone Flume, Route 1, Sparrow Springs Rd., backed into a 1993 Toyota operated by Jeanette Surratte, Highway 216 North, doing a total of \$600 damage. The incident happened in the Harris-Teeter parking lot.

JANUARY 25
Ptl. Jerry Tessner said that a 1986

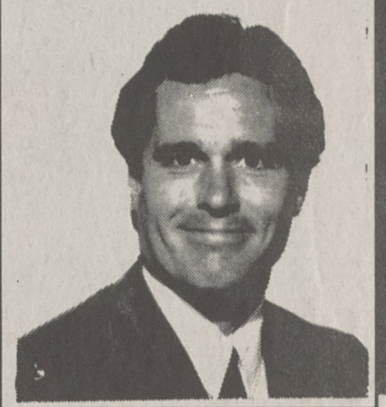
Toyota operated by Margaret Allyson Norris, York, SC, struck a 1986 Chevrolet operated by Larry Hainlen, 110 Mathews Dr., doing \$1200 damage. The accident happened as the Toyota entered the street from a parking lot East on King Street.

JANUARY 26
Ptl. M.E. Jamerson said that a 1994 Dodge operated by Bob Jones, 1302 Wesson Rd., Shelby, pulled from a driveway on Canler Street and struck a 1976 Chevrolet truck operated by Timmy Childers, 219 Waco Road. Damages were estimated at \$450.

JANUARY 27
Ptl. Rena Rikard said that a 1992 Chevrolet operated by Renee Jackson, 129 Ark St., struck a 1980 Chevrolet operated by Terry Lee Carpenter, Route 3, on York Road. Property damages were estimated at \$2300.



The Foot Clinic



DR. WILLIAM G. WYATT

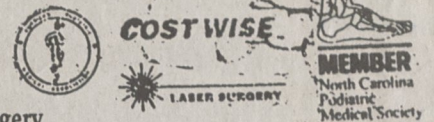
• Board Certified, American Board of Podiatric Orthopedics

• Specializing in Foot Surgery

• Member, American Podiatric Medical Association

• Member, North Carolina Podiatric Medical Association

• Certified Advanced Vascular Testing • Certified, Advanced Laser Surgery



Complete Foot Care

- Bunions
- Heel Pain
- Ingrown Nails
- Diabetic Footcare
- Bone Spurs
- Outpatient & Office Surgery
- Laser Surgery
- Minimal Incision Surgery
- Worker's Compensation
- Toe Problems

Most PPO's & Insurance Accepted!

732-1874

323 West Main Street
(across from Public Library)
Lincolnton

You Said:

"I Want A Great Looking Car
With A Price I Can Afford"

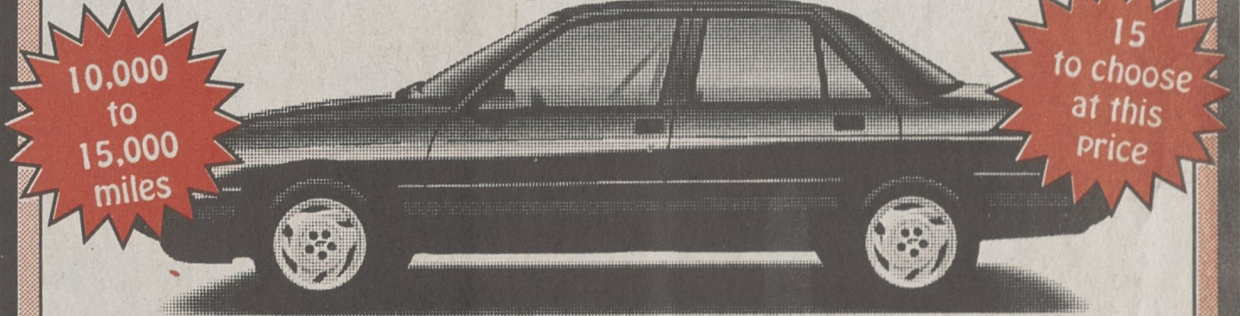
NOW HERE'S OUR OFFER

Your Choice - One Price - One Payment

Wise Buys are the Best Buys because the depreciation has already been taken on these low mileage Factory Program Cards. All have the remaining 36/36,000 Mile GM Bumper to Bumper Warranty!

\$209⁰⁰ Just **\$500** DOWN
Per Month

94 Chevy Corsica LT



Automatic Transmission
3.1 Liter V-6
Air Condition
Rear Defogger

Sales Price

\$10,488

Driver Side Air Bag
Antilock Brakes
Power Door Locks
AM/FM Stereo

Remaining Factory Warranty

*9.5% APR at 60 months plus tax & tags on approved credit. * 36 Months and 36,000 Miles GM

NOW THAT'S AN OFFER!

MCKENNEY



"You Drive Away With A Smile!"

• Belmont •

825-3306

1-800-273-3306

301 E. Wilkinson Blvd.

Belmont, N.C. 28010

• Kings Mountain •

739-6011

1-800-273-3370

I-85 Exit 8 at Hwy. 161

Kings Mountain, N.C. 28086



* Payments based on \$500 cash down or trade at 9.5% APR. Plus tax & tag. 60 months 5% A.A.



Tyvola Rd., Ext.	1/2
Arrowwood Rd.	1/2
Hwy. 481	1/2
Rock Hill	1/2
Pineville	1/2

(704) 551-6300 7501 SOUTH BOULEVARD, CHARLOTTE, N.C.