



LADIES NEEDED TO PLAY GOLF - Lynne Mauney, Sylvia Neisler and Doris House, left to right, are practicing for the upcoming Red Cross Golf Tournament at River Bend. Eighteen LPGA golfers will play with local golfers. Get application blanks at your local pro shop.

## Women golfers needed for Red Cross tourney

The Cleveland County Chapter of the American Red Cross will hold its fifth annual Ladies Pro-Am Golf Classic Monday, October 28 at River Bend Golf Club. Entry fee is \$50 and is payable to the American Red Cross, 215 Patton Drive, Shelby, NC 28150. For more information, call the Red Cross at 487-8594 or Lynne Mauney at 739-5181.

LPGA pro golfers will be on hand to play with local golfers in a "best ball" format. There will also be a hole-in-one contest offering a new car from Rogers Pontiac-Cadillac-Buick-GMC, closest to the hole contests on the par 3's, and a longest drive contest.

Registration begins at 8 a.m., the practice range and green will open at 8:15, and the tourney will begin with a shotgun start at 9 a.m.

Entry deadline is October 24.

## BINGHAM

From Page 7-A

accompanied his last two world championships. "Are you kidding? Those last two times took ten years off my life. I was literally sick," he said. "It may not be quite as exciting for the announcers or fans but it sure feels a lot better to me and my family. Last year the entire Top Sportsman pit area didn't breathe until the championship was finally decided. Then it erupted in a huge celebration, which was great. But given a choice, I prefer to win it like this."

ESPN joined in the celebration as it taped the beautiful Doug Herbert Performance Parts Cutlass and happy race team for the opening and closing segments of the IHRA Sportsman Series TV coverage to be aired on Sunday, Oct. 6 at 4 p.m. This continues the immense TV coverage Bingham has received this year.

"This has been a dream year, said the smiling Bingham. "I

just thank the good Lord for all His blessings. I have the greatest team of sponsors who helped put me here: Doug Herbert Performance Parts, Stroupe Race Cars, CCH Sports Marketing, Snap-On, Ron's Racing Products, Strange Engineering, Auto Meter, ARP, BG Fuel Pumps, Bruno's RT, Crane, Childs ^ Albert, Dart, Griffin Radiators, Goodyear Tires, Hedman Heddners, JE Pistons, Jet Hot, Koni, Lenco, Moroso, Mr. Gasket, Hurst, Accel, MSD, NOS, Pennzoil, Plonk Tire, Phil's Starter & Alternator, RJS, TCI and Weld Wheels. These guys kept me going round after round into the winners circle many times. I appreciate their support."

Bingham will go into the final race of the year, the Snap-On Finals in Darlington, SC on October 10-13, as the three-time World Champion. He said he would like nothing better than to put his Doug Herbert Performance Parts Cutlass in the winner's circle for the final event of the year, just to put a little icing on the cake.

## School Briefs

### October lunch menus for KM District Schools

October lunch menus for Kings Mountain District Schools. Additional choices are added at each school.

Oct. 3 - Fish crispie or pinto beans, cole slaw, choice of fruit, cornbread, milk.

Oct. 4 - Hamburger or cheeseburger, lettuce/tomato, French fries, fruit, milk.

Oct. 7 - Chicken nuggets with BBQ sauce, potato rounds, slaw, fruit, milk.

Oct. 8 - Potato bar with ham & cheese, vegetarian beans, bread sticks, choice of fruit, milk.

Oct. 9 - Taco salad, corn on cob, jello/fruit, milk.

Oct. 10 - Meat loaf, creamed potatoes, steamed broccoli, fruit, roll, milk.

Oct. 11 - Hot dog with chili, oven fries, slaw, choice of fruit, milk.

Oct. 14 - Chicken filet sandwich, lettuce/tomato, corn on cob, milk.

Oct. 15 - Lasagna, tossed garden salad, bread sticks, choice of fruit, milk.

Oct. 16 - Cheese, pizza, broccoli, choice of fruit, milk.

Oct. 17 - Bag lunch, KMMS and KMHS cafe choice.

Oct. 18 - Teacher workday.

Oct. 21 - Corn dog with cole slaw, baked beans, choice of fruit, milk.

Oct. 22 - Spaghetti, garden salad, buttered corn, bread sticks, choice of fruit, milk.

Oct. 23 - BBQ on bun with BBQ slaw, whole white potatoes, choice of fruit, milk.

Oct. 24 - Baked chicken, rice/gravy, broccoli, Normandy roll, choice of fruit, milk.

Oct. 25 - Hoagie sandwich, tomato/lettuce/onion/pickle, potato salad, choice of fruit, milk.

Oct. 28 - Vegetable beef soup with toasted cheese or peanut butter/jelly sandwich, fruit, crackers, milk.

Oct. 29 - macaroni and cheese with ham slice, green beans, choice of fruit, milk.

Oct. 30 - Turkey sandwich or tuna salad with saltines, potato salad, crispie okra, fruit, milk.

Oct. 31 - Hot dog with chili, slaw, oven fries, fruit, milk.

Nov. 1 - School choice.

### CCAEO meeting held at Crest High

The Cleveland County Association of Educational Office Professionals met Thursday, Sept. 19 at Crest High School. The CCAEO is one of the local units in Cleveland County consisting of Administrative Assistant support personnel employed in the Cleveland County School System, including school food service, bus transportation, maintenance, and the education center.

Once a month during the school year the organization gets together for a workshop/business meeting. Johnny Presson and Jack Rankin of Retirement Alternative of North Carolina presented Thursday's program. One of the many topics covered was retirement.

The Shelby City and Kings

### Mountain Associations of Educational Office Professionals also participated in Thursday's meeting.

The next meeting will be held Thursday, Oct. 17 at Township Three Elementary School.

### Bethware fall festival is Saturday, October 12

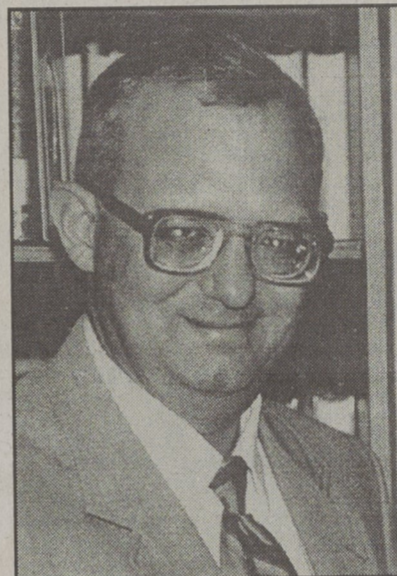
Bethware Elementary School will hold its annual fall festival Saturday, October 12.

A craft fair will begin shortly before noon, and games and activities will begin at 3 p.m. Pop corn, candy apples, cotton candy and a lot of other goodies will be sold and there will be games and activities for all ages.

Barbecue will be available for the dinner meal beginning around 4 p.m.

A dance/sock hop/concert combination featuring entertainment by the popular local band, Mink, will begin at 6:30 p.m. in the auditorium.

The school is still looking for vendors and volunteers. Anyone interested should call Mark Blanton at 739-8317.



MARK HUGHES

### KM's Mark Hughes joins faculty at Cleveland CC

Mark Hughes has been named Instructor of Electronics Engineering Technology at Cleveland Community College.

Originally from North Carolina, Hughes is a graduate of Kings Mountain High School and received his A.A.S. in Electronics Engineering Technology at Gaston College. He completed a B.S. in Electronics Technology and a Master of Technology at Southeastern Oklahoma State University and has done additional work at Clemson University. Prior to joining the faculty at CCC, he was Department Head of the Electronics Engineering Technology program at Orangeburg-Calhoun Technical College in Orangeburg, SC.

He and his wife, Patricia, and their daughter, Anna Grace, 8, live in the Antioch Community near Grover.

Subscribe To The Kings Mountain Herald

### Visitation Day set at Belmont Abbey

Belmont Abbey College will host a visitation day for high school juniors and seniors on Friday, Oct. 25 at 9 a.m.

"Abbey Experience" affords visitors an opportunity to learn

more about North Carolina's only Catholic college. Visitors will sample Abbey classes and tour the campus. College officials will be available to answer questions.

For more information, call 825-6665 or 1-888-222-0110.

### NEW IN TOWN?

Southern Hospitality would like to extend a warm welcome to you as newcomers in Cleveland County. Call us for free "Welcome Kit", including many significant free gifts from local businesses and professionals. We also have a free Civic and Community Literature packet that is filled with helpful information.

**Southern Hospitality**

Shirley Lail  
P.O. Box 362  
Shelby, NC 28150  
Tel: 434-6017

**NOW OPEN**  
**The Tool Shed**  
**DISCOUNT PRICES**  
**Tools of All Kinds!**  
108 W. Gold St., Kings Mountain Across from City Hall  
Hours: M-F 8-5 • Sat. 8-12  
**730-0450**

**NO MONEY DOWN!**

96 MAZDA B2300 \$11,799  
96 MAZDA B2300 \$143  
96 MAZDA PROTEGE \$199  
96 MAZDA 626 LX \$163  
96 MAZDA MIATA \$163

Check Out Our USED CAR Superstore!

**NEW & USED INVENTORY Arriving Daily!**

Buy from us!  
We'll Pay Off Your Trade-In!  
**NO MATTER WHAT YOU OWE!**

**Vester Mazda**  
1-800-280-6771  
Shelby, NC • 704-482-6771  
Monday - Friday: 8:30am - 7:30pm, Saturday: 8:00am - 5:00pm

**One Service Only**

• 83 Year Old Pastor  
• 50 Years in Ministry  
• Choirs Singing & Hear Him Sing

**Sunday, October 6th • 2:00 pm**

Bishop Amos Jackson

**Gospel Assembly Church**  
William Podaras  
Senior Pastor

202 S. Railroad Ave. • Downtown Kings Mountain  
**(704) 739-5351**  
Nursery Provided

**DINING & Entertainment**

**Chan's Garden**  
201 York Rd, Kings Mountain, NC  
Daily Buffet Hours  
11-3 \$4.50 11-9:30 M-Th  
5-9 \$5.99 11-10 Fri-Sat  
**739-6134** Closed Sunday

**Dedmon's Livestock Restaurant**  
814 Wallace Grove Road, Shelby  
Good Home Cooking Served  
Sun-Mon-Tues 11am-2pm  
487-8116  
Home Of The Fried Apple Pie

**Griffin Drug Center**  
129 W. Mountain St.  
Downtown Kings Mountain  
739-4721  
Snack Bar Hours  
M-F 9-4 • Sat 9-1

**JACKSON'S KITCHEN** 304 Main St. Clover, S.C.  
Open M-F 8am-6pm  
Deli style lunch served 11-1:30  
Dine-In Available

**Italian Islands**  
101 W. Church St., Cherryville  
**435-6115**  
Open 7 days a week • 11:00am - 10:00pm

**THE TRAINING TABLE**  
1206 E. Dixon Blvd. Shelby  
Open Mon-Sat Lunch & Dinner  
"Most items made from scratch"  
Call ahead for Sun Hours 481-1117  
Open M-Sat Lunch 11-3 Dinner 5:30-10

**WTF!**  
To Be A Part Of Our Dining & Entertainment  
Call Aron • 739-7496