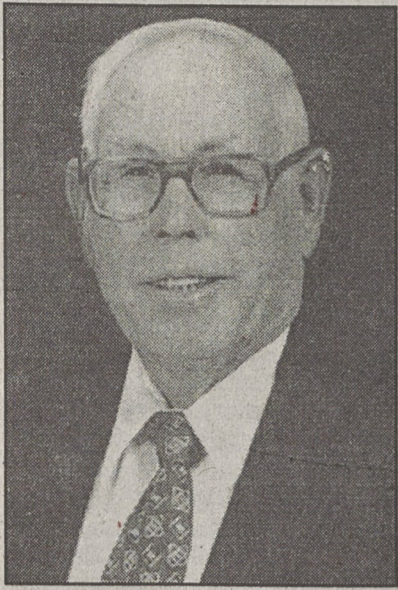


**Obituaries**



**ODELL BENTON**  
KINGS MOUNTAIN - Odell Benton, 72, 270 Benton Road, died July 16, 1997 at Cleveland Regional Medical Center in Shelby.

A native of Cherokee County, SC, he was the son of the late Charlie G. and Mary Viola Adams Benton. He was also preceded in death by his sister, Mary Lou Adkins.

He was a retired farmer and a member of Kings Mountain Baptist Church, where he was an active Deacon, chairman of the ushers for 17 years, and Sunday School secretary for 39 years.

He is survived by his wife, Betty Bell Benton of Kings Mountain; son, Gary Benton and daughter-in-law Patricia Cook Benton of Kings Mountain; sister, Alice Wilkes of Shelby; and grandchildren, Nicholas Dale Benton and Kristen Nicole Benton of Kings Mountain.

The funeral was conducted by the Rev. Olin Byrum at 11 a.m. Friday at Kings Mountain Baptist Church. Burial was in Mountain Rest Cemetery.

Memorials may be made to Kings Mountain Baptist Church, 101 West Mountain Street, Kings Mountain, NC 28086.

Harris Funeral Home was in charge of arrangements.

**RONALD SIMMONS**  
SHELBY - Ronald Simmons, 2249 Crosby Drive, died July 17, 1997 at his home.

A native of Brooklyn, NY, he was the son of the late Thomas and May Simmons. He was retired after 37 years as an alloy welder with PPG, was a U.S. Air Force veteran, and was a member of Beaver Dam Baptist Church.

He is survived by his wife, Martha Piercy Simmons of Shelby; daughter, Linda Simmons Treadway of Shelby; brothers, Thomas "Buddy" Simmons of Metairie, LA and Frank Simons of Comak, NY; sisters, Peggy Sundquist of Benice, FL, Dorothy Hickey of East Northport, NY, and Barbara Scott of Fredericksburg, VA; and grandsons, Jeremy Treadway and Brian Treadway of Shelby.

The funeral was conducted by Drs. Bob Shackelford and Paul Sorrells at 3 p.m. Saturday at Beaver Dam Baptist Church. Burial was in the church cemetery.

Memorials may be made to Hospice of Cleveland County, 951 Wendover Heights Drive, Shelby.

Cleveland Funeral Services, Inc. was in charge of arrangements.

**BENJAMIN BLACK**  
KINGS MOUNTAIN - Benjamin Richard Black, 84, Autumn Care Nursing Center, Raeford, died July 20, 1997 at Autumn Care.

A native of Cherokee County, SC, he was the son of the late Real and Alice Fulton Black. He was also preceded in death by his wife, Ruthie Moore Black. He was a retired farmer.

He is survived by his sons, Paul Black of Grover and Marcell Black of Rutherfordton; daughters, Carolyn Godinez of Kings Mountain, Louise Lovelace of Grover, Bennie Moore of Blacksburg, SC, Ilene Wilson of Blacksburg, SC, Ilene Allen of Grover, Julie Camp of Raeford, and Edna Cogdell of King Mountain; brother, L.J. Black of Kings Mountain; 32 grandchildren, 53 great-grandchildren, and seven great-great-grandchildren.

A graveside service was conducted by the Rev. Don Ingle at 1 p.m. Wednesday at Antioch Baptist Church cemetery, Blacksburg, SC.

Harris Funeral Home was in charge of arrangements.



**DOT TIGNOR**  
KINGS MOUNTAIN - Dorothy "Dot" Cobb Tignor, 71, 413 Scotland Drive, died July 17, 1997 at Kings Mountain Hospital.

A native of Cleveland County, she was the daughter of the late Foley P. and Ruth Bennett Cobb. She was a homemaker and a member of Resurrection Lutheran Church.

She is survived by her husband, Eugene Tignor of Kings Mountain; sons and daughters-in-law, Ronnie and Shirley Tignor and Mike and Beverly Tignor of Kings Mountain; brother, Donald Cobb of Kings Mountain; sisters, Betty Metz of Hilton Head, SC and Bonnie Horne of Kings Mountain; six grandchildren and five great-grandchildren.

The funeral was conducted by the Rev. Paul Abbe at 11 a.m. Saturday at Resurrection Lutheran Church. Burial was in Mountain Rest Cemetery.

Memorials may be made to Resurrection Lutheran Church, 600 Crescent Circle, Kings Mountain, NC 28086.

Harris Funeral Home was in charge of arrangements.

**CRAWFORD JOHNSON**  
KINGS MOUNTAIN - Howell Crawford Johnson, 72, 103 Myers Street, died July 21, 1997 at Kings Mountain Hospital.

A native of Union County, SC, he was the son of the late Edwin Howell and Fannie Crawford Johnson. He was employed by Burlington Mills for 34 years, and retired from Parkdale Mills where he was a supervisor. He was a member of Kings Mountain Baptist Church and was a World War II veteran with service in the U.S. Navy during the Normandy Invasion.

He is survived by his wife, Margaret Allman Johnson of Kings Mountain; daughters, Diane Hurlbut of Raleigh, Sandra Gregory of Bessemer City, and Debra Santora of Waterford, CT; brothers, Edwin Johnson of Bessemer City and Chalmers Johnson of Atlanta, GA; sisters, Eunice Holcomb of Kings Mountain, Ann Sherrill of Gastonia, Corrie Mote of Shelby, and Eleanor Argile of Montgomery, TX; grandchildren, Rob and Marc Hurlbut, Andy Gregory, and Jennifer and Joy Gregory; and great-grandchildren, Luke and Mason Hurlbut.

The funeral will be conducted by the Rev. Olin Byrum at 11 a.m. Thursday at Kings Mountain Baptist Church. Burial will be in Mountain Rest Cemetery.

Memorials may be made to Kings Mountain Baptist Church, 101 West Mountain Street, Kings Mountain, NC 28086.

Harris Funeral Home was in charge of arrangements.

**ELIZABETH WHITE**  
SPARTANBURG, SC - Elizabeth Ormand White, 90, of Converse Heights, died July 15, 1997.

A native of Bessemer City, NC, she was the wife of the late Edward Zimmerman White, and daughter of the late Benjamin and Carrie Burke Ormand. She was a member of First Presbyterian Church of Spartanburg.

She is survived by three daughters, Sandra W. Stephens of Spartanburg, Barbara W. Barefield of Lawrenceville, Ga., and Edwina L. Mooneyham of Hiram, Ga.; two sisters, Nell Thompson and Millie Burnhardt of North Carolina; a brother, Dr. B.F. Ormand of Brevard, NC; nine grandchildren and 13 great-grandchildren.

A private graveside service was conducted by Dr. Todd B. Jones at 4:30 p.m., Wednesday,

July 16 in Greenlawn Memorial Gardens.

A memorial service was conducted by the Rev. Ansley Babb at 2:30 p.m. Saturday, July 19 at First Presbyterian Church Chapel.

**LARRY WHISNANT**  
SHELBY - Larry A. Whisnant, 64, 1309 Metcalf Road, died July 21, 1997 at his home.

A native of Cleveland County, he was the son of the late O.A. and Mable Carpenter Whisnant. He was retired from PPG and was a member of Hoyle Memorial United Methodist Church.

He is survived by his wife, Barbara Thompson Whisnant of the home; son, Bill Whisnant of Shelby; son and daughter-in-law, Gary and Trisha Whisnant of Fresno, California; daughter, Linda Parker of Kings Mountain; brother, Dean G. Whisnant of Shelby; and six grandchildren. He was also preceded in death by a brother, Jim Whisnant.

A graveside service will be conducted by the Rev. Richard C. Clough Jr. and Dr. Bob Kerr at 11 a.m. Thursday at Cleveland Memorial Park.

Memorials may be made to Hoyle Memorial United Methodist Church Building Fund, 1741 Fallston Road, Shelby, NC 28150.

**CVS and Revco complete merger**

CVS Corporation today announced that it has completed its merger with Revco D.S., Inc., following provisional approval from the Federal Trade Commission of an agreement allowing CVS to proceed with the transaction.

In the merger, each Revco share will be exchanged for 0.8842 CVS shares, resulting in the issuance of approximately 60 million CVS shares to Revco shareholders, based on about

**Annexation hearing on Council agenda**

Public hearing on the city's plans to annex 857 acres in four areas of the city will be conducted by City Council Tuesday night at 7:30 p.m.

The annexation, if approved, would take in 592 people, 231 dwellings and 20 establishments over a 1.34 square mile.

Notices of the upcoming hearing and maps of the areas have been mailed to property owners as well as to Volunteer Fire Departments and Solid Waste providers affected by the proposed annexation. The text of the map was published in last week's Herald.

The annexed areas would include:

Area 98-C - Highway 74 Business West, 518.10 acres including 184 dwellings of 469 people, 18 establishments on 3.71 miles of streets with assessed value of \$10,684,258.

Area 98-D - the golf course area, 1906.79 acres, two dwellings, one establishment with assessed value \$467,660.

Area 98-E Waco Road - 74 Bypass right-of-way, contiguous annexation of Spectrum, 222.33 acreage, 83 people, 32 dwellings, \$678,700 assessed value.

Area F- Linwood area, the smallest area of 10.03 acres, 20 lots and 23 homes, \$678,700, assessed value.

Rolling services such as po-

67.8 million outstanding Revco shares, excluding approximately four million Revco stock options.

Under the agreement with the Commission, which will now be placed on the public record for comment, CVS will divest 120 Revco stores out of a combined CVS/Revco store base of over 4,000 stores. All but six of the stores to be divested are located in the Richmond and Tidewater regions of Virginia

lice, fire and sanitation would be provided those areas July 1, 1998.

The annexed areas would be impacted by fire protection and are currently served by Bethlehem, Oak Grove and Chestnut Ridge Fire Departments.

The board will also conduct

public hearings on conditional use zoning requests from Eddie and Joyce Houser, 613 Slater St., and Kings Mountain Metal Inc., York Road, and set August 26 as a public hearing on request of Mike Brown of Brown Meadows subdivision for modification of the city's subdivision ordinance.

**KINGS MOUNTAIN WEATHER REPORT**

(Compiled by Kenneth Kitzmiller)

	July 16-22	Year Ago
Total precipitation	2.2	0
Maximum one day	1.60 (16)	0
Year to date	33.62	25.88
Minimum temp.	60 (17)	70 (18)
Maximum temp.	95 (19, 21)	95 (20)
Average temp.	78.4	82.7

**Introducing the...  
COUNTRY CLIPPER**

With Cutting widths of 48 and 60 inches

Patented Single Stick Control Cast iron engine pulleys, and spindle pulleys help extend belt and pulley life. Self-adjusting belt tightener on hydrostatic pump drive assures less maintenance and extended belt life.

18 Horsepower and 22 horsepower Kohler V-Twin OHV Command engines furnish more torque and high fuel economy with less noise and vibration.

For the best value in zero turn mowers.

- 90° Flip-Up Deck
- Single Stick Control
- Articulate Deck

One of the most compact, maneuverable units in the market today!

**PAUL'S SMALL ENGINE REPAIR**  
1600 York Rd., Hwy 161 South • Kings Mountain  
(704) 739-6089 Owned & Operated By Paul Hord, Jr.

**moonlight madness**

**sale**

Friday, July 25 - 6 pm - 11 pm  
Saturday, July 26 - 10 am - 9:30 pm

Savings Up To **70%**

**Biggest Sale of the Season!  
Two Days Only!**

**EASTRIDGE MALL**  
Matthews Belk, Dillard's, JCPenney, Choices Food Court and other fine stores.  
I-85 & North New Hope Road, Gastonia, NC Customer Service 867-1847