

School Briefs

North Elementary sets open school August 8

North Elementary School will have an "Open School" on Friday, August 8.

Parents and children are invited to attend and meet the children's teachers.

The hours are 10-11 a.m. for kindergarten through grade 2, and 1-2 p.m. for grades 3-5.

East School plans August 8 open house

East Elementary School will have open house Friday, August 8 from 1-3 p.m. Students can go by and meet their teacher.

New students are encouraged to go by the school and register before school starts on August 11.

Bethware Elementary plans orientation day

Bethware School will hold its parent orientation day Thursday, August 7 from 6-6:45 p.m.

Parents are to meet with teachers concerning curriculum instruction only. This is not a conference time.

West School plans drop-in August 7

West School will have a drop-in to meet the teachers on Thursday, August 7 from 3-5 p.m.

Principal Sherrill Toney said all students and parents are invited.

Orientation Friday at KM Middle School

Friday, August 8 has been scheduled for all sixth grade students and parents to visit Kings Mountain Middle School for an orientation.

A group meeting will begin at 6:30 p.m. in the gym. Following this sessions, students will visit classrooms and meet their teachers.

Families are encouraged to arrive before 6:15 p.m. in order to park and be seated at what is expected to be a full house.

New traffic pattern at KM Middle School

The Department of Transportation is completing construction work on the new entrance at Kings Mountain Middle School.

The new entrance will be located at the site of the old exit. Cars will move around the top of the circle and proceed to the front of the building with the

building on the driver's right side. Drivers will then proceed down a new exit road which passes in front of the main classroom building, exiting on the road on the lower side of the campus.

D.O.T. predicts that the new holding capacity will reduce the traffic stoppage on Phifer Road.

No students should be dropped off or picked up on Phifer Road.

Masters attends nurses conference

Betty P. Masters, a Nurse at

Kings Mountain District Schools, recently attended the 29th annual National Association of School Nurses Conference in Dallas, TX.

At the conference, Masters met with nearly a thousand other school nurses from throughout the country and other experts who deal with school health issues on a daily basis.

The National Association of School Nurses has more than 10,000 members, all of whom are professional nurses, in all 50 states and several foreign countries.

KEY NUMBERS

Names, addresses and telephone numbers of Kings Mountain District School Board and Administrative personnel.

BOARD OF EDUCATION

Ronnie Hawkins, 316 Countryside Rd., 704-739-0032.

Shearra Miller, 403 W. Mountain St., 704-739-0806.

Burlie Peeler Jr., PO Box 395, 704-739-3252.

Connie A. Allison, PO Box 784, 704-739-3441

Billy D. Houze, 1725 Shelby Rd., 704-739-8300.

ADMINISTRATIVE

(telephone number 704-734-5637)

Supt. Dr. Robert McRae Jr., 1406 Merrimont Ave.

Asst. Supt. Jane King, 603 Crescent Circle.

Asst. Supt. Ronnie Wilson, 106 Country Club Rd.

Dir. Student Services Jean Thrift, 609 Crescent Circle.

Dir., Exceptional Children, Carolyn Roark, PO Box 114 Blacksburg, SC.

Dir. Workforce, Development - Sheila Sisk, Ridge Street.

Dir. Child Nutrition, Patsy Rountree, Box 337, Grover.

Dir. Fiscal Control, Terry Haas, 233 Hoyle Rd.

Cleveland County Head Start, Patti Norman, PO Box 281, Earl, 734-5660.

School Maintenance, Robert Scism, 108 Country Club Rd., 704-734-5636.

PRINCIPALS

Bethware Elementary - Mary Accor, 115 Bethware Dr., 704-734-5623.

East Elementary - Jerry Hoyle, 600 Cleveland Ave., 704-734-5633.

Grover Elementary, Jackie Lavender, Carolina Avenue, Grover, 704-734-5643

North Elementary, Joey Hopper, 900 Ramseur St., 704-734-5693.

KM Middle School, 1000 Phifer Rd., John Goforth, 704-734-5667.

Kings Mountain High School, Phil Weathers, 500 Phifer Road. 704-734-5647.

Parker Street School, Mike Rhoney, 500 W. Parker St., 704-734-5677.

Opening/Closing Times Elementary - 8 a.m.-2:50 p.m., may vary

Middle - 8 a.m.-2:52 p.m.

High School 7:50 a.m.-2:48 p.m.

INCLEMENT WEATHER

Station/Channel WKMT; Kings Mountain Radio

WLTC/ Gastonia Radio

WBTW/ Charlotte TV

WHNS-TV 21

WXRC/Hickory Radio

WSPA/Spartanburg TV

WADA/Shelby Radio

WSOC/Charlotte TV

WNCW/Spindale Radio

WLOS/Asheville TV

WWNC/Asheville Radio

WWMG/Charlotte Radio

Headline News 33/Shelby

WSOC-FM/Charlotte

WOHS/Shelby Radio

WCNC/Charlotte TV

WFAE./Charlotte Radio

CHARACTER

From 1-B

the character traits and their importance in the lives of students. Cooperating churches will feature the traits in congregational activities and an upcoming crusade.

Task Force members include Maria Boone, Brandy Boone, Rev. Ron Caulder, Nelson Connor, Rev. Theron Feemster, Ronnie Hawkins, Charmaine Johnson, Jewell Kendrick, Stella Putnam, Beth Sellers and Charles Smith.

THE BEEF PEOPLE



- when you:
- Purchase \$50.00 or more.
 - Pay using your Mastercard
 - Use the In-store or In-as Coupon
 - Shop August 6 through August 12, 1997
 - Only at Winn-Dixie.

Master Card Presents.....

\$5.00 Off

your total food bill!

VENDOR COUPON / EXPIRES 8/12/97

\$5.00 off when you use your MasterCard

Get \$5.00 off your next \$50.00 grocery purchase at Winn-Dixie with this coupon & your MasterCard card.

\$5.00 discount does not apply to merchandise that cannot be discounted. The discount applies to total retail dollar value of other tax as required by law. TO DEALER: This certificate will be returned for face value plus cents handling if used in accordance with the offer stated herein; any other use, including reselling, is prohibited. LIMIT ONE COUPON PER TRANSACTION. Certificate not transferable, void where prohibited, taxed, or otherwise restricted. Cash redemption value of .20 cents. Customer must pay sales tax. Send certificate to: MasterCard, P.O. Box 800476, Ft. Lee, VA 22046-0476.

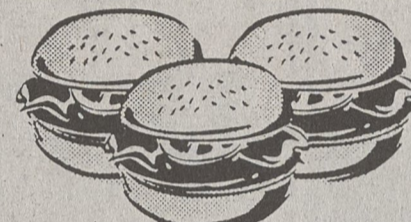


TO CONSUMER: Use certificate per purchase. Certificate is not valid for "Double Coupon" programs and cannot be used in conjunction with other offers. This certificate is not valid for purchases of \$20.00 or more at any Winn-Dixie store that has a "Double Coupon" program. This certificate is not valid for purchases of \$20.00 or more at any Winn-Dixie store that has a "Double Coupon" program. ©1997 MasterCard International Incorporated.

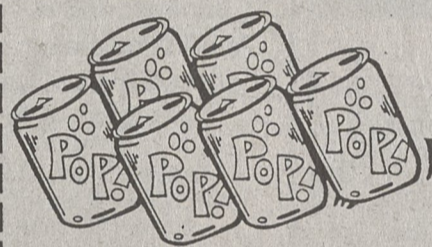
It's like getting this stuff for FREE!



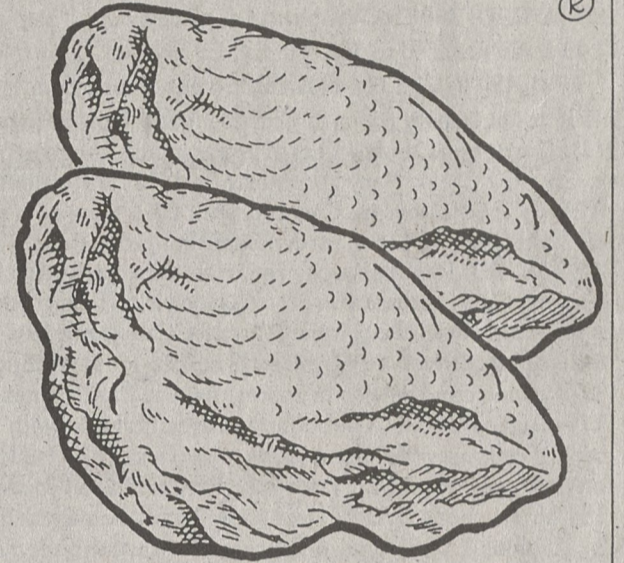
2 Gallons of Milk Free!



3 lbs. of Ground Beef FREE!



12 pack Soft Drinks FREE!



U.S.D.A. Inspected

Split Fryer Breast

88¢

Limit 4 pkgs with \$20.00 or more food order

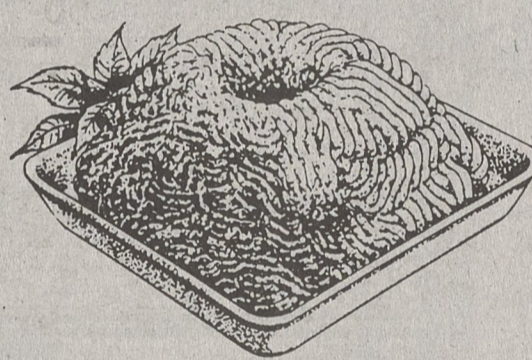


Winn-Dixie America's Supermarket

PRICES GOOD WEDNESDAY AUGUST 6, THRU TUESDAY AUGUST 12, 1997.

W-D Brand Beef... the Best Beef for your Money!

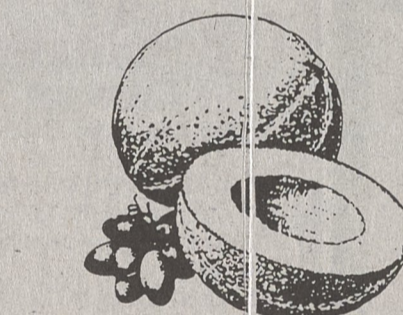
Always U.S.D.A. Choice • Aged for Taste • 1/8-inch Trimmed of Fat & Waste



Fresh Ground Round

\$1.48

lb.



Harvest Fresh California Westside Jumbo

99¢

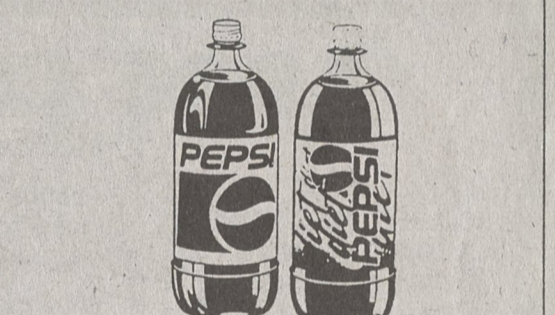
ea.



32 oz. jar Regular, Light or No Cholesterol Dukes

88¢

ea. Limit 2 with \$20.00 or more food order.



2 liter bottle Diet Pepsi, Mt. Dew or

99¢

ea.

W-D Brand U.S.D.A. Choice Boneless London Broil.....lb. \$1.98

Clip & Save

Harvest Fresh Red Seedless California Grapes...lb. 99¢

10.4 oz. Cracklin' Good Apple, Blueberry or Strawberry Fruit Cereal Bars

COUPON VALUE: \$1.00

\$1.18

with coupon

Limit 1 per Coupon

Winn-Dixie America's Supermarket

half gallon All Flavors Superbrand Ice Cream... 98¢

25.5 oz. box Kountry Fresh Raisin Bran

COUPON VALUE: \$1.00

\$1.39

with coupon

Limit 1 per Coupon

Winn-Dixie America's Supermarket

6 pk. 12 oz. cans All Flavors Chek Drinks.....88¢

10 lb. bag Regular or Scented Kitty Please Cat Litter

COUPON VALUE: \$1.00

99¢

with coupon

Limit 1 per Coupon

Winn-Dixie America's Supermarket

FRESH FROM THE BAKERY! All Varieties Soft Style

Great Plains Breads

\$1.58

ea.

FROM THE DELI! 97% Fat Free Madison Deli

Cooked Ham

\$2.98

lb.

FROM THE FISHERMAN'S WHARF! Fresh Farm Raised Mtn. Grown

Rainbow Trout

\$2.97

lb.

half gallon Superbrand Regular

Orange Juice

78¢

ea.