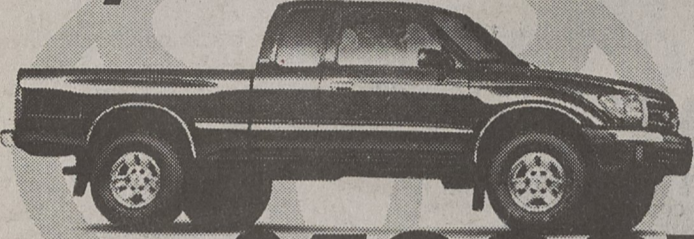


SAVINGS PACKAGES

Savings up to **\$3200!**

Get All The Extras And Save Too!

Toyota Tacoma 4x4



Save up to **\$4000!**

Toyota Sienna



Save up to **\$3000!**

Toyota Rav 4



Save up to **\$3000!**

Toyota Camry



Save up to **\$4000!**

Y2K Toyota Tundra Now In Stock!!



Order Yours Today!

Toyota Tacoma 2x4



Save up to **\$3000!**

Toyota Corolla



Save up to **\$2500!**

Toyota 4Runner



Save up to **\$4000!**

Toyota Avalon



Save up to **\$4000!**

DON T FORGET! DON T FORGET!!! SATURDAY MAY 22nd
 The Gaston County Masonic Lodge & Toyota Of Gastonia Sponsors Olympic Diver MIKE DOCHTERMAN On Our Lot For The Shriners Burn Center.
HE DIVES FROM UP TO 80 FEET INTO 3 FEET OF WATER ON OUR LOT!
PLUS: THE WORLDS LARGEST YARD SALE!
PLUS: Country Rock Band From 12-4 SOUTHERN JUSTICE
PLUS: REFRESHMENTS & FREE CAR DRAWING!!
YOU ARE INVITED!!!
Starts At 8:30 AM

AND THE BEST USED CARS ANYWHERE!!

LARGE SELECTION OF PROGRAM TOYOTAS SAVE "BIG" MONEY

'99 Toyota Camry LE

 as low as \$189 per mo Or \$16650

'99 Toyota Solara SE

 as low as \$299 per mo Or \$20195

'98 Nissan Maxima GXE

 as low as \$209 per mo Or \$17295

'99 Toyota 4Runner

 as low as \$199 per mo Or \$16995

'98 Chevy Prizm

 as low as \$139 per mo Or \$10695

'96 T-100 SR5 Ext Cab

 as low as \$209 per mo Or \$16995

'99 Toyota Corolla CE

 as low as \$179 per mo Or \$13295

'98 Toyota Camry LE

 as low as \$179 per mo Or \$15395

'98 Toyota Corolla LE

 as low as \$159 per mo Or \$11985

'97 Toyota Camry LE

 as low as \$169 per mo Or \$14695

CHECK US OUT! Huge Selection Of SUV's & Vans!

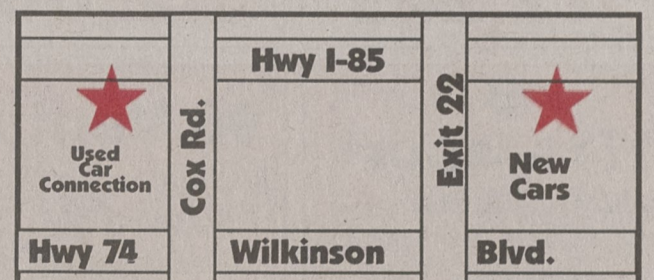
Certified Toyotas
 100,000 Warranty, Roadside Assistance, New Car Finance Rates, Absolutely as close to new as it gets

Good Selection Of Older Cars And Trucks! We'll Deal!

BAD CREDIT-NO PROBLEM We Have The Best Plan Anywhere!

Toyota of Gastonia

1-800-852-8696
824-7777
 4821 Wilkinson Blvd.
 Gastonia Monday-Friday 8:30am-8pm Sat 8:30-6



www.ToyotaofGastonia.com

Visit Our Web Site @ www.TOYOTAOFGASTONIA.COM
 New & Used Car Pictures and Descriptions-Prices-Rates-Payments.

All payments based on \$1995 Cash or trade down plus tax & tag & 1st pmt. security dept. 12,000 miles per year average. .15¢ per mile overage option of lease end purchase OAC.