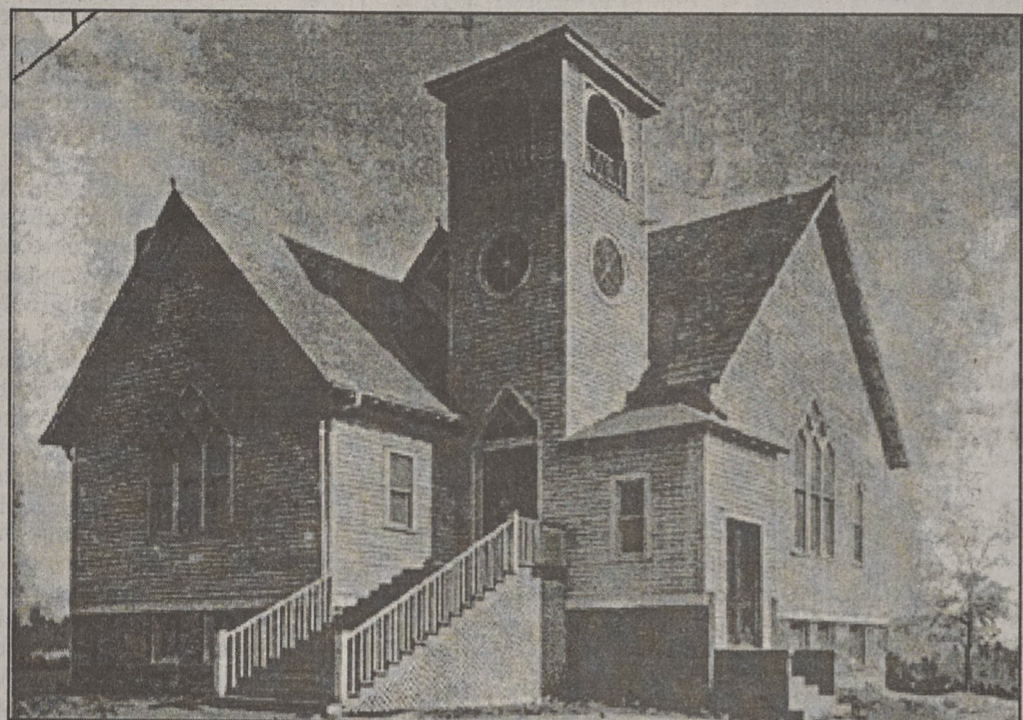


Celebrating the old-time way

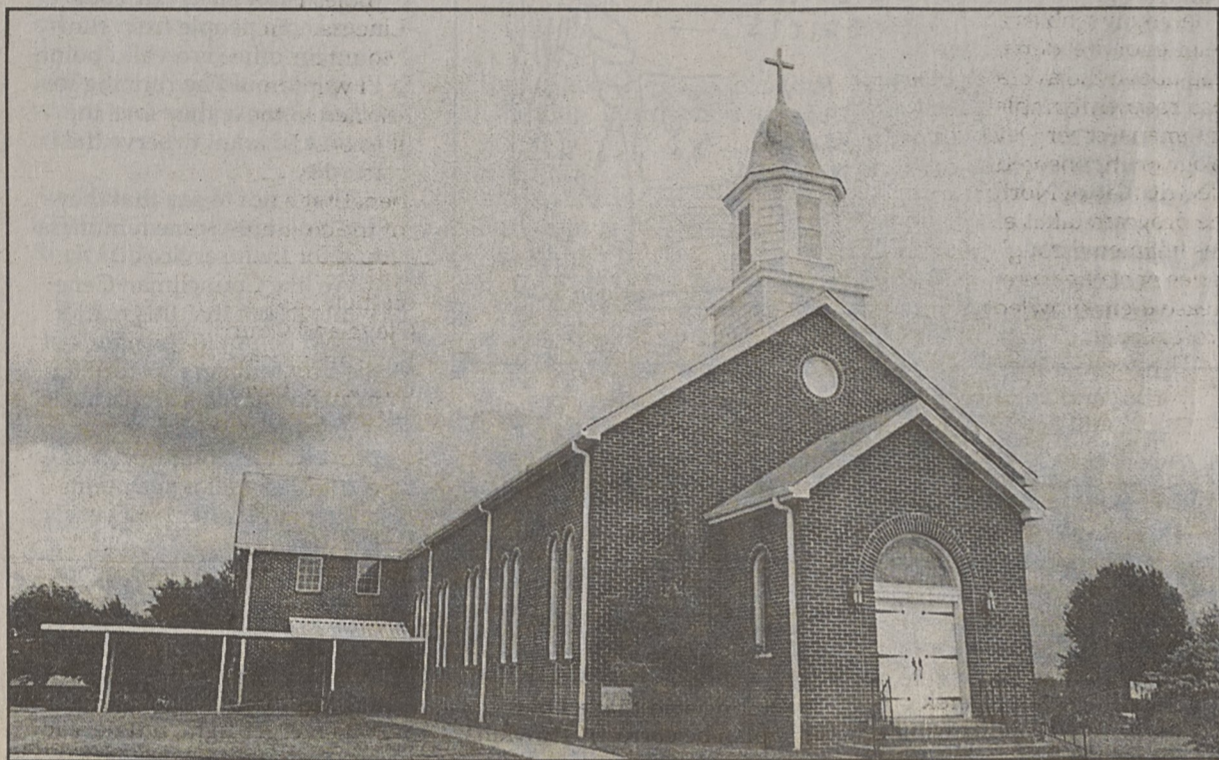
Grace United Methodist's 100th anniversary Sunday will feature 1900 worship service



Original church members



Second church building



Present Grace United Methodist Church

Grace United Methodist Church will celebrate its 100th year anniversary Sunday with an old-time worship service, lunch on the grounds, and ice cream social.

Sunday School assembly begins at 9:45 and worship begins at 11. The public is invited. Rev. Dale M. Swofford, the church's 42nd pastor, will get the celebration going in grand old style when he rides onto the church property on horseback in the tradition of the Methodist Circuit Riding Preacher.

Swofford will be decked out in a black suit and shirt, black hat and huge old-time white clerical collar, and carrying his Bible under his arm. He will get off the horse, tie it up to the front of the church, walk directly into the church and start preaching.

According to Swofford, prior to 1900 the Circuit Riding Preacher may have served the whole state. Around 1900 he probably served a two-to-three county area.

"The average circuit rider would do three-quarters of a million miles by horseback," he said. "They normally died in their mid-thirties because of harsh conditions."

The tradition is still partly carried on in the Methodist church, as pastors are assigned to churches usually for no more than six to eight years.

"The tradition is still there," Swofford said. "We just don't move around quite as much."

Swofford said anytime a Circuit Rider came to town, the

next day was automatically Sunday. A worship service would be held and the preacher would then move on to another community.

Also in the tradition of the 1900s Circuit Rider, Sunday's service will not have a bulletin and many of the members will dress in 1900s style.



SWOFFORD

"I'm just going to get off the horse, walk right into the church and start preaching," Swofford said. "Nothing's going to be planned. We're going to do it just like they did it a hundred years ago."

Following the service, the congregation and guests will go to the fellowship hall for a covered dish lunch, and afterward will enjoy homemade ice cream.

"We're just going to make it a day of celebration and a church family reunion," he said. "We're going to celebrate God, we're going to celebrate the church, and we're going to celebrate the church family."

Many members hope to ride to church in buggies. Anyone in the community willing to furnish a buggy may call Swofford at the church.

Grace United Methodist was founded in 1882 as Kelly's Chapel by the Rev. W.T. Ford. It was located in a small log cabin

off Linwood Road.

The cabin was given to another congregation and the church was relocated onto Linwood Road as Bradley's Chapel. In 1900 the church moved to its present location at 803 Church Street and was re-named Grace Methodist Church.

The original wood structure burned in the teens, was rebuilt and burned again in 1946. It was rebuilt in the modern brick church building that still stands on the same site.

The church's 42 pastors include W.T. Ford, C.W. Smith, R.L. Sell, William Rawlings, W. Perry, D.S. Richardson, George W. Spake, F.W. Bradley, H.D. Christenberry, W.G. Daniels, T.C. Crocker, A.S. Beaman, T.C. Cooper, F.A.L. Clark, Rev. Williams, A.L. Johnson, William F. Fitch, Rev. Stevenson, Rev. Penley, B.A. Culp, R.F. Revis, A.B. Dennis, H.E. Jones, G.W. Fink, T.W. Hager, W.W. Lefler, C.L. Grant, W.C. Sides Jr., N.H. Pusey, J. Max Brandon Jr., T. Dixon Adams, J.C. Lane, Newell C. Bush, Robert Lair, C. George Sherrill, James C. Singleton, Larry G. Puryear, Eddie L. Black, A. Frank Gordon Jr., Patricia Stone, Michel Murray, and Dale M. Swofford.

Kings Mountain Weather Report

(Compiled by Kenneth Kitzmiller)

	May 3-16	Year Ago
Total precipitation	.68	.59
Maximum one day	.68 (13th)	.20 (7th, 13th)
Year to date	20.26	14.97
Minimum temp.	49 (11th)	52 (14th)
Maximum temp.	90 (12th, 13th)	86 (17th)
Average temp.	70.7	70.6



ALAN HODGE/THE HERALD

Family Worship Center on Shelby Road in Kings Mountain held a ground breaking for their new \$1.8 million addition on Monday. When completed, the 14,939 square foot project will add an additional 1,000 seats to the church's capacity. Pictured at the ceremony are, left to right: Brenda Page of First National Bank, mayor Rick Murphy, Rev. Roger Woodard, Rev. Ken Looney, architect Keith Bright, project manager Ron Pantuso.

Gaston courses on internet

Some Gaston College courses are now available on the Internet for individuals who cannot participate in traditional on-campus classes.

Both course materials and technical support are available 24 hours a day. Each course is designed to be 24 hours in length. Two lessons per week are placed on the Gaston College page of the Education to Go server. Each lesson is designed to be two hours in length. The course lasts for six weeks, at a cost of \$55.

For more information, or to register for an Education to Go course, contact David Pittman, Coordinator of the Computer Training Institute at 704-922-6521, or email at pittman.david@gaston.cc.nc.us.

The Herald

Published every Thursday
Periodicals postage at Kings Mountain, NC 28086
USPS 118-880 by Republic Newspapers, Inc.

Postmaster, send address changes to:
P. O. Box 769, Kings Mountain, NC 28086
Phone (704) 739-7496 • Fax (704) 739-0611
Office: 824-1 East King Street • Kings Mountain, NC 28086

Mike Blanton.....Publisher
Gary Stewart.....Editor
Alan Hodge.....Staff Writer
Stacy Godfrey Kale.....Advertising Manager
Shelley Campbell.....Composition Manager

Mail Subscription Rates

Payable in Advance. All Prices include 6% NC State Sales Tax.

	1 Year	6 Months
Gaston & Cleveland County	\$21.20	\$13.78
Other NC Counties	\$22.26	\$14.84
Outside NC	\$26.50	\$16.43



Republic Newspapers, Inc.



www.shelbymotorcars.com • www.shelbymotorcars.com • www.shelbymotorcars.com

Shelby Motors LLC

Chrysler Jeep Nissan

Town & Country
Voyager Grand Voyager

You Keep The Rebate

Entire New Vehicle Inventory

Maxima Altima Sentra

Xterra Pathfinder All Frontier Pickups

Over \$5000 In Discounts

Home of the Lifetime Guarantee

Plus Financing As Low As 1.9% APR

Concorde LHS 300m Cirrus Breeze Neon

Everybody Financed! 1-800-265-8256 Credit Hot Line • Automated

94 Buick Skylark 4 dr. N3218, V6, Auto, Pwr. W/L/Mirrors, Cruise, Tilt, Cassette	\$5,497	99 Plymouth Breeze P1983, Pwr. Everything, Auto, Air, Expresso Pkg, Low Miles	\$12,599
94 Chrysler LeBaron J1144B, V6, Auto, Tilt, Cass., P Lk/Win/Mirrors, Rear Defogger	\$5,997	98 Honda Civic LX 4dr. 1 owner, well equipped, Good Miles	\$12,997
95 Pontiac Grand Am 4dr. C3487, Auto, Air, Cruise, Tilt, Pwr. Locks/Windows, New Tires	\$6,497	98 Dodge Dakota Sport P182, Low Miles, Auto, Air, Sunroof, CD, Big Cast Al. Wheels, Liner	\$13,997
97 Plymouth Breeze C3524A, Auto, Air, Pwr. Mir/Lks/Wind., Cruise, Tilt, Cass. New Tires	\$9,597	98 Jeep Wrangler 4x4 Only 25,000 miles, Soft Top, Custom Wheels	\$13,997
99 Cavalier 4 dr. Automatic, Air, 1 Owner, Low Miles, Like new!	\$10,497	97 Honda Accord EX 5 speed, Sunroof, Excellent Condition	\$14,997
98 Mazda Protege 4 Dr. Automatic, Air, Cruise, Tilt, Power Everything, Real Nice Car!	\$10,497	96 Dodge Ram 1500 SLT 4x4 P/U Prettiest truck in Town - Automatic, Air, Big Tires, V8	\$15,797
95 Dodge Ram Conversion Van Great Travel Vehicle, Loaded Excellent Shape	\$10,995	99 Ford F150 XL Pickup P1953A, Cassette, Air, Cruise, Tool Box, Chrome Wheels	\$15,995
97 Pontiac Grand Am GT 2 Dr. Loaded, Air, Hot Looking Car!	\$10,997	98 Jeep Cherokee Classic 4x4 P1979, CD & Cassette, Pwr. Win/Lks/Mir., Lug. Rk., 4 dr., Sunscreen	\$16,897
98 Chevy Monte Carlo LS N358A, Pwr. Wind/Lks. & Seat, Cruise, Tilt, Cass., Al. Wh., Auto, V6, Low Mil.	\$10,997	98 Plymouth Grand Voyager Expresso pkg, V6, Rear Air, Cast al., Low Miles, Lug. rk., Sun, Gl. CD, Sec. S.	\$16,997
96 Ford Windstar GL Front & Rear Air, Power Everything, What a Bargain!	\$11,397	97 Wrangler Sport 6 Cyl., Automatic, Air, Hard Top, Hard Doors, Styled Wheels, New Tires	\$17,397
95 Olds Aurora P1909A, One Owner, Leather, Pwr. Sunroof, Cast Wheels, More Options to Mention	\$11,997	99 Dodge Grand Caravan SE P1992, Rear Air, Luggage Rack, Pwr. Everything, Sunscreen, V6, Auto	\$18,497
96 Ram Conversion Van Great Travel Vehicle, Automatic, Air, Pwr. Everything, V6, Tilt, Cruise	\$11,997	98 Ford F150 Pickup Luxury conversion package, Fiberglass step-ups & more, Beautiful! Loaded! Power Everything, Auto, V6, Big Wheels	\$19,997

EXTRA DISCOUNTS for Freightliner & PPG Employees
\$99 OVER INVOICE ON ALL MAKES & MODELS EXCEPT PT CRUISER

SHELBY CHRYSLER Jeep NISSAN
MON.-FRI. 9-8pm • SAT. 9-6pm • Closed SUNDAY
325 W. Dixon Blvd., Shelby
484-0049
www.shelbymotorcars.com • www.shelbymotorcars.com • www.shelbymotorcars.com