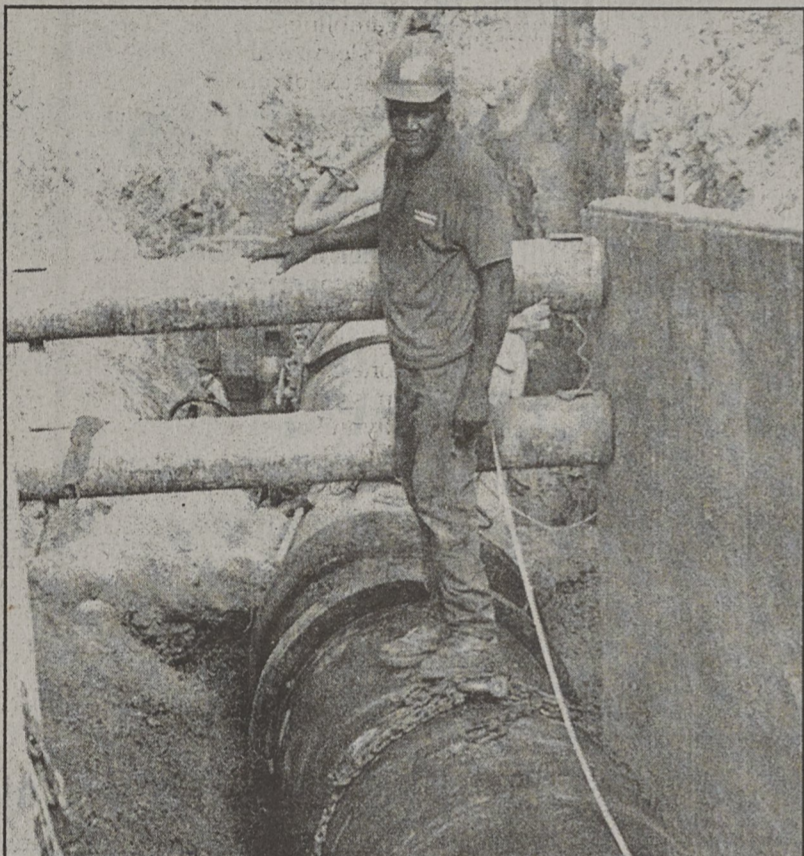




Backhoe operator Scott Sullivan and his helpers Juan Saldina (left) and Mario Calvillo were doing their dusty duty recently at Moss Lake with crews hooking up the new Kings Mountain water main. Sullivan is from Wingate and his men are from Monroe.



Pipe fitting veteran Jerry White with Crowder Construction makes sure a bend in the new 36-inch Kings Mountain water main at Moss Lake is lined up just right.

WATER

From 1A

thank you, and you may now feel free to use what you need."

Kings Mountain will eventually replace some seven miles of water line from Moss Lake to the City Public Works Department. Phase Two, or the Northern Loop, will include a 36-inch line from Public Works to Cansler Street. That project has already gone out to bids and construction could begin by the fall.

Triagon Engineering Consultants recently analyzed the existing 24-inch line, which has been in service since Moss Lake was built in the late 1960s, and determined that the line should last 15 to 20 years if it is properly maintained.

The city has embarked on a 10-year plan to replace the entire line, and keeping the 24-inch line as a backup in case of emergencies. The total project will cost about \$10 million. The city plans to replace about one-tenth of the line each year at a cost of approximately \$1 million per year.

"We hope to be able to continue to install additional phases of the 36 inch line annually until it is completed all the way to the water tanks on North Piedmont Avenue," Maney said. "This will greatly improve the hydraulics of our system, and allow us to increase plant capacity as needed. The present line has the same capacity as the plant, meaning we would need to install a new line, in its entirety, if we needed to expand the plant. Doing the two at the same time would be a huge expense."



Jerry White of Crowder Construction gets ready to clean out the new water main that will go to Kings Mountain from Moss Lake.



Water valve experts (from left) Jack Moore, Mitch Moore, and Eric Moore from Matthews are in charge of making sure the valves for the new Kings Mountain water main are correct. Mitch says he intends to carry on the family business for another generation.

Food, Fashion & Fun

Belk • Goody's • JCPenney • Sears
And over 30 Specialty Shops

All Under One Big Roof

Christmas In July

Craft Show

July 13 - 16



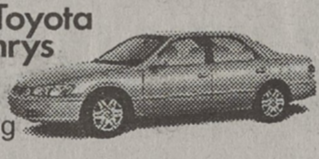



ACC
Communication
Andy's Hallmark
Chick-Fil-A
Chic Wig
Claire's Boutique
Corn Dog 7
Corrado's Pizza
Dollar Tree
Foot Locker
Friedman's Jewelers
Hair Plus
Italian Gold
Kay Bee Toys
LeApple Seed
Men's One

Marks & Morgan
Maurices
Mindboggle
Nails First
Optometric Eye Care Center
Pretzel Time
Radio Shack
Raffles Salon
Royal Jewelers
Shoe Dept.
Shoe Show
Sound Shop
Strictly Silver
The Crate
The Shopp
Waldenbooks



Where Shopping is Pure Pleasure
2001 E. Dixon Blvd., Shelby, NC

HOT, HOT, HOT! IS BACK! And HOTTER THAN EVER!

<p>2000 Toyota Echos</p>  <p>Starting At... \$11467</p>	<p>2000 Toyota Corollas</p>  <p>Starting At... \$12499</p>	<p>2000 Toyota Camrys</p>  <p>Starting At... \$16999</p>
<p>2000 Toyota Avalons</p>  <p>As Low As... \$23899</p>	<p>2000 Toyota Celicas</p>  <p>As Low As... \$18550</p>	<p>2000 Toyota Siennas</p>  <p>As Low As... \$22699</p>

All prices plus tax, tag and options. WAC. Make your 1st pmt up to \$200. Must bring in Ad! WAC.

And The Best Used Cars Anywhere!

BARGAIN CARS

<p>90 Buick LeSabre Now Only... \$3495</p>	<p>91 Cadillac Deville As Low As... \$6995</p>	<p>91 Chevy Cavalier Now Only... \$3495</p>
<p>95 Chevy Corsica Now Only... \$4995</p>	<p>91 Caravan SE Now Only... \$4995</p>	<p>94 Tempo GL Now Only... \$3995</p>
<p>92 Ford Probe Now Only... \$4995</p>	<p>95 Geo Metro Now Only... \$3495</p>	<p>95 Mazda Protege Now Only... \$5995</p>

Bad Credit? NO PROBLEM! Over 2000 Approvals This Year!

<p>1999 Chevy Malibu 6 to choose As Low As... \$12495</p>	<p>1999 Ford Mustang LX As Low As... \$15495</p>	<p>2000 Toyota Camry LE 20 to choose As Low As... \$17695</p>	<p>2000 Toyota Corolla CE 20 to choose As Low As... \$12995</p>
---	--	---	---

<p>1990 BUICK LESABRE 1998 CHEVY VENTURE 1999 CHEVY ALIBU 1998 CHEVY METRO LSI 1999 CHEVY S-10 1991 CHEVY CAVALIER 1998 CHEVY ASTRO 2000 CHEVY CAVALIER 1999 CHRYSLER CIRRUS 1997 TOWN & COUNTRY 1999 DODGE RAM 1500 1997 DODGE DAKOTA 1999 DODGE DURANGO</p>	<p>1995 DODGE VAN 1995 FORD TAURUS 1998 FORD ESCORT 1997 FORD T-BIRD LX 1999 FORD TAURUS SE 1998 FORD CONTOUR 1999 FORD TAURUS GL 1999 FORD MUSTANG 1994 FORD TEMPO GL 1992 FORD PROBE SE 1999 FORD TAURUS 1998 FORD WINDSTAR LX 1998 FORD RANGER XLT</p>	<p>1999 FORD F-150 1997 FORD RANGER XCAB 1998 FORD RANGER XCAB 1999 RANGER QUAD CAB 1997 FORD RANGER 1997 METRO LSI 1995 METRO 4 DOOR 1997 METRO LSI 1998 HONDA ACCORD LX 1998 HONDA PRELUDE 1999 HONDA CIVIC LX 1997 HONDA CIVIC 1998 HONDA ACCORD LX</p>	<p>1997 HONDA ACCORD SE 1997 HONDA ACCORD EX 1998 HONDA CIVIC LX 1991 HONDA CIVIC LX 1997 HONDA ACCORD LX 1999 HYUNDAI ACCENT 1997 ISUZU HOMBRE XS 1997 ISUZU RODEO 1997 GRAND CHEROKEE 1998 CHEROKEE 1998 GRAND CHEROKEE 1997 KIA SEPHIA 1999 KIA SEPHIA</p>	<p>1997 LEXUS ES300 1998 MAZDA 626 1996 MAZDA 626 LX 1999 MAZDA MIATA MX-5 1997 MAZDA PROTEGE 1999 MAZDA 626 LX 1999 MAZDA PROTEGE 1999 MAZDA 626 LX 1999 MAZDA 626 LX 1997 MAZDA 626 LX 1991 MAZDA 626 LX 1989 GRAND MARQUIS 1998 MITSUBISHI MIRAGE 1999 MITSU GALANT ES 2000 MITSU MIRAGE DE 1997 EC:IPSE SS 1999 MIRAGE DE 1999 GALANT ES 2000 MIRAGE DE</p>
---	---	--	---	---

CERTIFIED TOYOTAS

100,000 Warranty, Roadside Assistance, New Car Finance Rates, Absolutely as close to new as it gets

<p>1997 ECLIPSE SS 1999 MIRAGE DE 1998 NISSAN FRONTIER 1996 NISSAN MAXIMA 1997 NISSAN SENTRA 1999 NISSAN MAXIMA GXE 1997 ALTIMA GXE 1999 ALTIMA GXE 1997 ALTIMA GXE</p>	<p>1997 NISSAN TRUCK XE 1997 NISSAN QUEST XE 1986 DELTA 88 1999 BREEZE EXPRESSO 1998 BREEZE 4 DOOR 1990 LASER 1999 GRAND AM 1996 GRAND PRIX 1994 GRAND AM</p>	<p>1999 GRAND AM SE 1998 GRAND AM SE 1997 SAAB SLE 1999 TOYOTA CAMRY 2000 SIENNA XLE 1997 4RUNNER 1999 TOYOTA COROLLA 1997 TOYOTA RAV4 1997 TOYOTA CAMRY</p>
---	---	--



1-800-852-8696
824-7777
4821 Wilkinson Blvd.
Gastonia Monday-Friday 8:30am-8pm Sat 8:30-6

Hwy 74	Wilkinson	Bld.
New Cars	Exit 22	Cox Rd.
★		Used Car Connection
	Hwy I-85	

Visit Our Web Site @ www.TOYOTAOFGASTONIA.COM
New & Used Car Pictures and Descriptions-Prices-Rates-Payments.