

New Texas medical facility honors John O. Harris Jr.

By GARY STEWART
Editor of The Herald

Johnny Harris of Kings Mountain and other family members and business associates recently dedicated Harris Professional Pavilion in Pasadena, TX in honor of Harris' late father, John O. Harris Jr.

The 25,000-square foot facility, located on a 2,000 acre tract that Harris' company, John O. Harris Interests, purchased in the 1970s, houses internal medicine, dental and allergy clinics. Harris said his company is also dealing with two major pharmacies.

The total development, known as Fairmont Central, includes other businesses such as banks, a 300-unit apartment complex, restaurants, shopping centers, office buildings, the Chamber of Commerce, Walmart, Family Dollar, other medical facilities and churches, as well as an upscale residential development.

Harris, President of family-owned Harris Funeral Home in Kings Mountain as well as John O. Harris Interests in Pasadena, said the new facility was named in memory of his father as a way of "continuing the vision" he had for the medical facility. John O. Harris Jr., known locally as "Ollie Jr.," died in 1996 after a long bout with cancer.

"I remember when he first bought that property, it was just open fields," Johnny Harris said. "We used to hunt that land."

He recalled that once roads were built into Fairmont Parkway, which connects major highways I-45 and State Highway 146, his father began an upscale neighborhood and



CONTRIBUTED PHOTO
The Harris Professional Pavilion in Pasadena, TX was recently dedicated to the memory of Kings Mountain native John O. Harris Jr. Harris began developing the facility prior to his death from cancer in 1996, and his company, John O. Harris Interests, completed the project in his memory.

then ventured into commercial development.

He placed restrictions on all leases and purchases, and many of his architectural and landscaping plans were later developed as ordinances by the town of 130,000 people.

"He never sold property not knowing what would go in there," Johnny Harris said. "He had to approve the design and final drawings, and all of the concrete parking and landscaping plans had to be approved as well."

Johnny Harris was keynote speaker for the pavilion dedication. Also in attendance were

family members and friends from Kings Mountain, including Ronnie Hawkins, Bobby and Sharon Horne, and Shirley, Mal and Keri Horne. Over 350 people attended the ceremony, including former mayors and other dignitaries.

Harris said people in Pasadena and Houston often referred to his father as "Mr. Fairmont Parkway" because of his efforts in bringing upscale commercial and residential development to the area.

"A live orchestra provided entertainment. A huge plaque in

John O. Harris Jr.'s memory was placed on the front of the building.

"Dad passed away in September 1996," Johnny Harris noted, "and it has been my goal to continue the development that he started. It would have been a fulfillment of his dreams."

"The dedication brought a lot of people together, and for me it was a pinnacle of what dad had been able to achieve for the last 30 plus years there," Harris said. "That development was his life, his struggle, and he died doing it. Hopefully we can complete it with the same dignity that he started it with."

Shelby Eye Center opens new branch in Kings Mountain

By BEN LEDBETTER
Staff Writer

The Shelby Eye Center's newest branch opened last week in Kings Mountain.

The Kings Mountain Eye Center will be open on East King St. in the office building next to the U.S. Highway 74 Bypass.

Nancy Cline, who will be working in the Kings Mountain office, said expansion into Kings Mountain has been planned for approximately nine months. Currently, the Shelby Eye Center has an office in Forest City, and sees patients in a physicians office in Gaffney, S.C.

Scheduling patients for the Kings Mountain Eye Center started in July.

All physicians at the Shelby Eye Center rotate and go to the different offices. Cline said the different office locations make it easier for patients who tend to live in different parts of the area.

"The main thing is that it's just more convenient for patients," Cline said. "Like this gentleman here has always been going to our Shelby office, but he lives in Bessemer City."

But that changed when the new office opened.

"I knew I needed to see him today," Cline said. "I said, 'You know, our new office is opening in Kings Mountain, would that be more convenient?'"

Along with her Bessemer City patient, Cline said traveling to different locations helps ease burdens on some of her other patients also.

"That's why we do it is really for the patients, so they don't have to travel as far," Cline said. "A lot of them have trans-



NANCY CLINE

portation issues and this helps them out."

Maintaining different offices in different areas is a way to reach more patients, Cline said.

Also in the E. King St. medical building is the Kings Mountain Women's Center and a Cleveland County Health Department office.

Both office's main headquarters are in Shelby.

Cline has been with the Shelby Eye Center for three years, and moved to Cleveland County from Augusta, Ga. where she did her residency at the Medical College of Georgia.

Cline will be in Kings Mountain approximately three days a week, and will open the office five days a week depending on patient demand.

The Kings Mountain Eye Center will offer laser surgery and other minor surgical procedures not requiring an operating room.

www.clevelandregional.org



Some people would go around the world to beat cancer.
"I was lucky to have Blumenthal Cancer Center just down the road."

LaLisa Carpenter, a young 35-year-old wife, mother of three, RN at Cleveland Regional Medical Center and part-time UNCC student, found a knot on her neck last year. She knew she needed a biopsy immediately.

The diagnosis was Hodgkins lymphoma and LaLisa became a patient at Blumenthal Cancer Center at Cleveland Regional Medical Center, an affiliate of the prestigious Blumenthal Cancer Center at Charlotte's Carolinas Medical Center.

There, Dr. Warden L. Woodard III prescribed chemotherapy and radiation for her early-stage disease.

"I had worked with Dr. Woodard a little," she says, "and was really impressed with him. I was confident that I would get the care I needed."

"The doctors at Blumenthal Cancer Center also practice in Charlotte, so they know what's being done there and at other big hospitals and they do the same thing here. You're just closer to home."

LaLisa also liked the cancer center itself. "It has its own entrance and the staff was very receptive to my kids coming in when I'd get chemotherapy. They were great to them and my husband."

Today, tests show LaLisa is cancer-free. She has resumed exercising and is regaining her strength, and she works one day a week at Cleveland Regional's maternity center.

LaLisa is grateful that Cleveland Regional offers top-quality cancer care. "You couldn't get any better care in Charlotte. And with chemotherapy, there are lots of times you don't feel like making that long trip."

Cancer treatment doesn't have to be a long, lonely journey for you and your family. Because Blumenthal Cancer Center at Cleveland Regional is right here at home.



Cleveland Regional Medical Center
Carolinas HealthCare System
201 E. Grover Street, Shelby • 704-487-3000

www.clevelandregional.org

FOOD INSPECTIONS

Cleveland County Health Department inspected the following food facilities during the week of July 27-August 1. *

** Indicates that employee(s) attended an approved handling course.

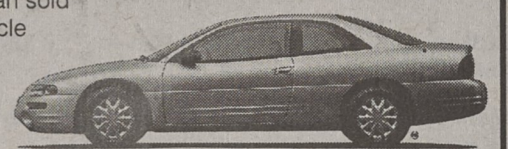
Restaurants

Bojangles, W. Dixon Blvd., 84.5**
Copeland, E. Dixon Blvd., 94.0**
Cotton's Seafood, N. Post Rd., 94.5
Eaton, E. Dixon Blvd., 97.5**
Finally's, Grover, 90.0

Jack in the Box, Earl Rd., 92.5**
Minit Grill, Kings Mountain, 91.5
Nakata's Japanese Steakhouse, E. Dixon Blvd., 86.5
PPG (forming) 91.5**
PPG (roving) 93.5**
Ryan's, E. Dixon Blvd., (re-inspection), 93.0**
Subway, Dixon School Road, Kings Mountain, 95.0
Swooger Shack, Shelby Road, Kings Mountain, 97.0
The Diner, Kings Mountain, 95.0

The Classifieds

Gets Your Car, Truck or Van sold FAST! Advertise your vehicle where the majority of your market audience is looking for a great deal!!



NEED BACK TO SCHOOL CASH?

A

ALLIED Financial Services

1015 1/2 East Church Street
Cherryville, North Carolina 28021
704-445-0020

We are located beside of the old Carolina Freight Terminal.

We offer personal loans, sales finance & check cashing loans.

Our loan service is Fast and Friendly.

WE CAN HELP!!





Jack McNeely Jan Thrift Jerry Greene