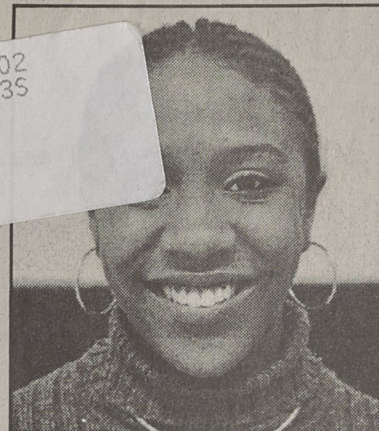


# KINGS MOUNTAIN The Herald

\*\*\*\*\*CAR-RT LOT\*\*C 002  
307 11-11-02 2300A00 3P 35  
MAUNEY MEMORIAL LIBRARY  
100 S PIEDMONT AVE  
KINGS MOUNTAIN NC 28086-3414

6A



Thursday, July 25, 2002

Vol. 114 No. 30

Since 1889

50 Cents

## Districts approved, re-filing underway

By BEN LEDBETTER  
Staff Writer

Filing for offices for the new state legislative districts started last Friday and the new period has prompted one incumbent to file for a new office.

Current N.C. Rep. John Weatherly, R-Cleveland, filed for the District 46 state senate seat currently occupied by incumbent Walter Dalton, D-Rutherford.

The 46th senate district would comprise all of Cleveland and Rutherford counties.

Weatherly previously served Cleveland, Gaston, Polk and Rutherford counties in the House.

Much of Weatherly's previous house district would be in Gaston County and he would have to run against fellow incumbent Debbie Clary, R-Cleveland.

Clary will serve District 110, which will include the Oak Grove, Bethware and Waco precincts plus parts of northern Cleveland and Gaston counties.

Clary will run against Republican Joe Carpenter, a Gaston County commissioner.

"I want to continue serving with the new senatorial district comprising Cleveland and Rutherford counties," Weatherly said. "I can do that service by being elected to the senate."

Although Weatherly has filed for another office, he will have a lot of the same issues to deal with in Raleigh.

One of the issues is the half-cent sales tax bill, which died in the General Assembly last week.

Weatherly was part of a bipartisan group that helped defeat the bill.

The death of the bill has filtered down to the local level as Cleveland County commissioners called a meeting for next Thursday at 10 a.m. at the County Administration Building, 311 E. Marion St., Shelby.

Weatherly said he wanted to see local governments get money due them last year and another sales tax hike

See District, 3A

## BETHWARE FAIR



Karissa Wilson rides the Merry-Go-Round (top photo) and Jacob Skidmore runs through the Castle at the Bethware Fair at Bethware Elementary School. The fair continues through Saturday night.

GARY STEWART / THE HERALD

## Fair Fun

The 55th annual Bethware Fair is under way on the grounds of Bethware Elementary School near Kings Mountain. The 6-day event is sponsored by the Bethware Progressive Club with profits going to school and community projects.

There are plenty of rides, fun, food, exhibits and fellowship. And, admission is free.

The fair hours are 6-11 p.m. Thursday and Friday and 3 p.m.-12 midnight on Saturday.



## Suit hopes to overturn plans to cut home care

By BEN LEDBETTER  
Staff Writer

Possible cuts in home care could affect many residents who depend on it across the state.

One of those is Kings Mountain resident Tammy Thrift, who is absolutely dependent on 24-hour nursing care provided through Medicaid's Private Duty Nursing Services.

She was involved in a car accident that left her a quadriplegic on her birthday in 1999 and was hospitalized for about three months.

She planned to come back to her home and live with her daughter and husband.

She now spends her days confined to a bed with a television in front of her. Blankets cover her up to her head and she has to stop talking to take a breath after every couple of words.

See Suit, 3A



Tammy Thrift has been dependent upon 24-hour nursing care since 1999 auto accident.

## New KM fire station to open

By BEN LEDBETTER  
Staff Writer

With construction nearly complete, the new fire station on Shelby Road in west Kings Mountain is almost ready for the fire department to occupy.

Kings Mountain Fire Chief Frank Burns said his department should be ready to move in about one week.

Part of the department will be housed in the new station while another group will be at the current station at City Hall.

An open house is expected to be held around the middle of

See Fire, 3A

## Additional 1/2-cent sales tax would have given KM \$167,000

By BEN LEDBETTER  
Staff Writer

When the sales tax bill died Thursday so did local government hopes of having another source of money.

A bill that would have allowed county commissioners to create a half-cent sales tax that would have given counties an additional money source after Gov. Mike Easley took reimbursements for cities and counties to help balance the state's budget died during the General Assembly's Thursday session.

Cleveland County stands to lose \$2.6 million if it can't pass the sales tax. Already the county lost \$932,000 in state money.

Earlier this month, county

commissioners held a town meeting in Shelby for citizens and municipal leaders to express their views on the additional tax.

No further action was taken on the matter.

Municipalities will also be affected by the decision.

Kings Mountain will lose \$167,000, which Mayor Rick Murphrey said could be made up with fund balances in the budget.

The city is also looking for approximately \$600,000 in utility franchise tax money which it had already planned for in its current budget.

Murphrey said the state may still get the money, but he has not seen it yet.

If the tax does not come, Murphrey said the city will

See Tax, 2A



FIRST NATIONAL BANK  
Celebrating 128 Years

Kings Mountain  
300 W. Mountain St.  
704-739-4782

Gastonia  
529 New Hope Road  
704-865-1233

Shelby  
106 S Lafayette St.  
704-484-6200

Bessemer City  
225 Gastonia Hwy.  
704-629-3906