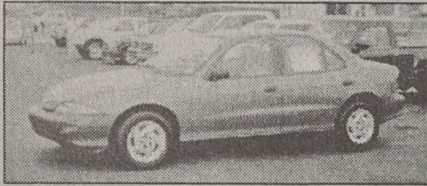


S&R AUTO SALES

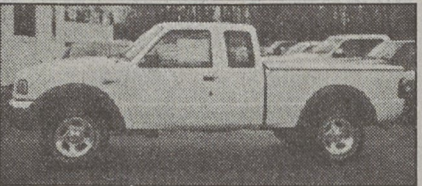
417 S. Post Rd. • Shelby, NC 28152 • 704/487-0570



'99 CHEVROLET CAVALIER
Blue, 4 Door, Automatic,
4 Cyl., AC, AM/FM Cassette, 34K miles
\$6,995



'02 CHRYSLER PT CRUISER
Maroon, 13,866 miles, AM/FM/CD, Dual
Air Bags, AC, Deluxe Wheel Covers
\$14,995



'01 FORD RANGER XLT SUPERCAB
White, Auto, 4 Wheel Drive, 6 Cylinder,
Slim Line Cover, 42K miles
\$13,995



'99 HONDA CRV LX
Black, 4 Door, Auto, Grey Interior,
AM/FM Cassette, 44K miles
\$12,995



'98 ISUZU RODEO
Red, 4 Door, 5 Speed, AM/FM Cassette,
AC, 27K miles
\$8,995



'99 ISUZU RODEO
Black, Automatic, 4 Door,
4 Wheel Drive, 43K miles
\$12,995



'98 ISUZU RODEO
Green, 4 Door, Auto, 6 Cylinder,
New Tires, 54K miles
\$10,995



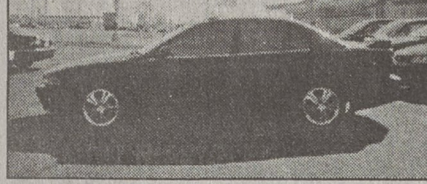
'96 HONDA ACCORD LX
White, 4 dr., Auto, Pwr. Win./Lck., AM/FM
Cass., New Tires, Local Trade, 62K mi.
\$7,995



'98 NISSAN ALTIMA GLE
Blue, 4 dr., Auto, Grey Leather, Sunroof,
Full Power, Alloy Wheels, 60K miles
\$10,995



'99 ACURA 3.2 PREMIUM
Silver, 4 Door, Auto, Tan Leather,
Loaded, 49K miles
\$16,995



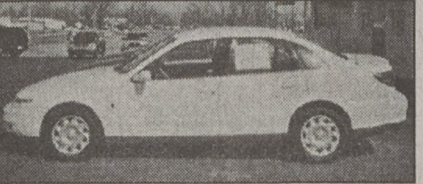
'00 MITSUBISHI GALANT GTZ
Black, 4 Dr., Auto, Black Leather, Sunroof,
Alloys, Rear Spoiler, Full Power, 36K mi.
\$13,995



'97 MAZDA MIATA MX-5 CONVERTIBLE
Red, 60,005 miles, 5 speed, Alloy Wheels,
Power Windows and Mirrors
\$8,995



'97 AUDI A4
Rust, 58,284 miles, Full Power, Keyless
Entry, Alloy Wheels, AM/FM Cassette.
\$10,995



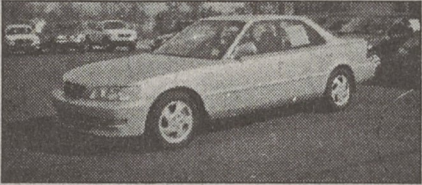
'01 SATURN SL100
White, 4 door, 29,715 miles,
AM/FM/CD, Full Power
\$10,995



'01 NISSAN XTERRA XE
White, 4 Door, Automatic,
4x2, Loaded, 49K miles
\$15,995



'98 ACURA 3.2 TL
Silver, 67,952 miles, Automatic, Full
Power, AM/FM/CD, Sunroof, Leather Seats
\$14,995



'98 ACURA 3.2 PREMIUM
Silver, 4 door, Auto, Tan Leather,
Sunroof, Full Power, 67K miles
\$15,995



'98 ACURA TL 2.5 PREMIER
Green, 4 Door, Auto, Leather, Sunroof,
Full Power, 46K miles
\$14,995



'00 FORD MUSTANG CONVERTIBLE
Green, Automatic, AM/FM CD,
Loaded, 41K miles.
\$13,995



'99 ACURA 3.5 RL PREMIUM
Black, Sunroof, 4 Door, Auto, AM/FM/CD,
New Tires, Loaded, 55K miles
\$18,995



'98 LEXUS ES 300
Black, 4 Door, Automatic, Sunroof, Tan
Leather, Alloy Wheels, Loaded, 57K mi.
\$18,995



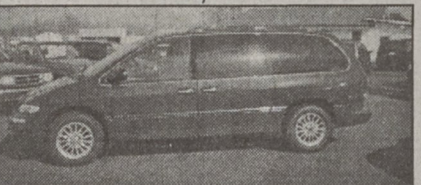
**'99 TOYOTA TACOMA
PRE-RUNNER EXT. CAB**
Blk., Auto, AM/FM/Cass./CD, Alloys, 50K
\$11,995



'96 TOYOTA T100 SR5
Blue, 83,048 miles, Full Power, Alloy
Wheels, Trailer Towing, AC
\$8,995



'02 TOYOTA COROLLA S
Silver, 4 Door, 5 Speed, Factory Warranty,
Like New, Local Trade, 11K miles
\$11,995



'99 CHRYSLER TOWN & COUNTRY LIMITED
Maroon, 4 Dr, Tan Leather, Chrome Wheels,
AM/FM Cass., CD, DVD, Power, 50K mi.
\$16,995



'99 TOYOTA 4-RUNNER
White, 4 door, Auto, Blue,
Cloth Interior, Local Trade, 77K mi.
\$13,995



'98 FORD EXPEDITION XLT
White, 4 Dr, Auto, 4x4, 4.6 V8, Chrome Wheels,
Rr. Air, 3rd Seat, Lighted Running Board, 62K mi.
\$16,995



'98 ISUZU TROOPER
Blue, 4 Door, Auto, 4WD, Pwr. Win./Lck.,
AM/FM Cass., New Tires, Off Lease, 46K
\$10,995



'99 JEEP GRAND CHEROKEE
White, 4 door, Auto, 4WD, Grey Leather,
Auto Buttons, Loaded, 50K miles
\$15,995



'99 CHEVROLET S10 EXTREME
Red, 5 Speed, 4 Cylinder, Alloy Wheels,
Loaded, 45K miles
\$8,995

Down Payments **\$500** And **\$50** Weekly On **ALL** Vehicles!
As Low As... **Only**

BUY HERE! PAY HERE!



'85 CHEVY CONVERSION VAN
V8, Windjammer Pkg.,
Captain's Chairs, Local Trade,
Country Club Special.



'94 CHEVROLET CORSICA
Blue, 173,040 miles, air,
AM/FM Cassette, Power Locks



'87 MAZDA B2600 4X4
Blue, 162,113 miles, 5 speed,
AM/FM Cassette



'90 FORD THUNDERBIRD
2 Dr., V6, Auto, A/C, PS, PB, PW, PDL,
PM, Tilt, Cruise, Red, Extra Clean, Local
Trade.



'93 NISSAN SENTRA
Blue, 88,836 miles,
AM/FM Cassette, AC.



'88 TOYOTA 4X4
Blue, 167,341 miles, 5 Speed,
AM/FM Cassette, Air.



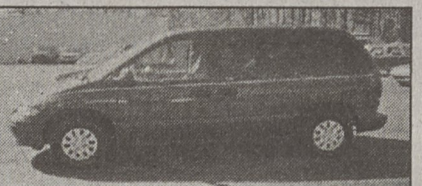
'96 NISSAN 200SX SE
Green, 84,074 miles, AM/FM/CD, Alloy
Wheels, Rear Spoiler, Power
Windows/Locks



'97 PLYMOUTH BREEZE
4 Dr., 4 Cyl., Auto, A/C, PS, PB, Tilt,
Cruise, AM/FM Cassette, New Tires,
Maroon, Gray Cloth, Nice Car.



**'97 JEEP GRAND CHEROKEE
LAREDO 4X4**
Black, 111,523 miles, full power, Trailer
Towing, Keyless Entry, AM/FM/CD



'96 DODGE CARAVAN
Green, 115,537 miles, AM/FM Cassette,
Power Doors, and Locks, AC, Child
Protection Locks



'94 CHEVY CORSICA
4 Dr., 4 Cyl., auto, A/C, PS, PB, Tilt, Cruise, AM/FM
Cassette, White, Burgandy Cloth, Extra Clean,
Driver's Side Air Bag.



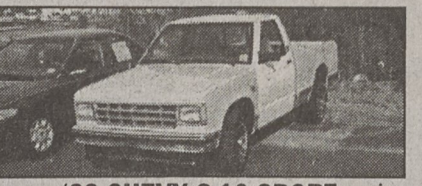
'95 HYUNDAI ELANTRA
White, 90,262 miles, 4 Door,
AM/FM Cassette, AC



'94 BUICK SKYLARK CUSTOM
Maroon, 183,194 miles, 4 door, AC,
Cloth Seats, AM/FM Cassette



'90 FORD LTD STATION WAGON
4 Dr., V8, auto., A/C, PS, PB, PW, PDL, PM, Tilt,
Cruise, AM/FM Cassette, Alloys, Silver, Leather,
Local Trade.



'83 CHEVY S-10 SPORT
6 Cyl., V6, A/C, PS, PB, Tilt, AM/FM
Cassette, Tan, Local Trade,
4 Speed, Good Haulin' Off Truck.



'93 DODGE SHADOW ES
Red, 175,658 miles,
5 speed, AC, AM/FM/CD



'86 NISSAN P/U KING CAB
Silver, 151,054 miles, 5 speed,
Cloth Seats, AM/FM Cassette



'94 FORD RANGER XLT
Blue, 5 Speed,
Air Conditioning,
AM/FM Stereo, Bedliner



'95 DODGE DAKOTA
Black, 76,925, AC, AM/FM Cassette,
Sliding Rear Window, Alloy Wheels



'98 CHEVROLET MALIBU
Gold, 97,997 miles, 4 door,
Bucket Seats, AM/FM Stereo.



'95 HONDA PASSPORT LX 4X2
Graphite, 106,927 miles, 5 speed, Alloy
Wheels, Full Spare Tire, Luggage Rack,
AC, AM/FM Cassette.



'89 FORD PROBE
Blue, 109,538 miles,
AC, Automatic



'97 NISSAN PICK-UP
4 cyl. 5 speed, Power Windows,
Black, 121,407 miles.



'93 EAGLE TALON DL
2 Dr., Hatch, Auto, A/C, PS, PB, Tilt, Cruise,
AM/FM Cass., Alloy Wheels, New Tires, 74K
Miles, Blue, Rear Spoiler.



'96 MAZDA PROTEGE DX
4 Dr., 4 Cyl., 5 Spd., A/C, PS, PB, Sunroof,
AM/FM Cass., New Tires, 54K Miles,
Blue, Tan Cloth.



'94 HONDA CIVIC
2 Dr., Hatch, 5 Speed, A/C, PS, PB, Green,
Local Trade, 4 Cyl.,
Good On Gas.



'99 FORD CONTOUR SE
4 Dr., V6, Auto, A/C, PS, PB, PW, PDL, PM, Tilt, Cruise,
AM/FM Cass., Alloys, New Tires, 96K Miles, Blue, Gray
Cloth, Extra Clean.