

Peep at the past

Old books and photos of Kings Mountain on display at history museum

BY ABIGAIL WOLFORD
Staff Writer

The Kings Mountain Historical Museum is now running its exhibit, "Books and Photos of Kings Mountain's Past." The exhibit will run until July 11.

"We have a really nice exhibit of early photos and books from early people in Kings Mountain," said Mickey Crowell, museum coordinator.

One of the cases contains Kings Mountain High School band pictures from the first few decades the band was in existence.

"I've had a couple of people come in and say they're in the band pictures. Band's been a big thing in Kings Mountain, and it still is today," she said.

The pictures, which are from the 1930s-1950s, show how the band uni-

forms changed through the years. Many of the pictures were donated by Joseph Hedden, one of the former band directors. A picture of Paul Hendricks, the first band director, is also part of the display.

The display also contains an article about a competition the band was invited to compete in during the 1940s. Also, the band played for the opening of the Blue Ridge Parkway in 1940. President Franklin D. Roosevelt was present at the performance.

"It's been a productive band for many years," said Crowell.

A display of many old business calendars is also included in the exhibit.

"A lot of these businesses aren't even in existence any more," said Crowell.

An 1878 picture of Carpenter Store is also part of the calendar display, as well as a picture of Griffin Drug Store from the 1930s.

Another case contains pictures and advertisements about centennial celebrations at area churches. St. Matthews Lutheran, First Baptist, and First Presbyterian Churches are included in the display. Also, a notice about the 125th anniversary of the Vestibule AME Zion Church is part of the display.

Another case contains photos of several major events in town. In 1947, a plane crashed in Kings Mountain, and the display includes a couple of photos of the plane. Also, a photo of the last steam locomotive to come through town is included in the display. Also, a book about Lake Montonia that contains many pictures of some of the original residents of the area is in that case. An aerial picture of Bridges Airport, which used to be located in Kings Mountain, is also included.

See Museum, 3B



Top, Mr. and Mrs. Marcus C. Carpenter used to live in the house at the site where the old post office (Kings Mountain Historical Museum) now stands. Left, Kings Mountain band pictures from the 1930s-1950's



Memorabilia from Kings Mountain's centennial celebration is on display at the Kings Mountain Historical Museum



ABIGAIL WOLFORD PHOTOS

Diamond

CHEVROLET

WE BUY SMART, SO YOU BUY EASY!



1999 Pontiac Grand Am SE

CD, Pwr. Win/Locks, Fresh Local Trade
\$7,975 or \$129/mo. Not a Lease! You Own It!



2001 Chevy Tracker LT

One Owner, Local Trade
\$8,400 or \$136/mo. Not a Lease! You Own It!



2002 Hyundai Elantra GLS

A+, AC, PW, PL, 15K, 1 Owner, Local Trade
\$8,999 or \$140/mo. Not a Lease! You Own It!



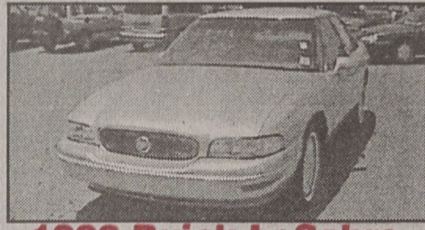
2002 Chevrolet Malibu

A+, PW, PL, CC, Tilt, Perfect, Program Car, GM Certified
\$10,400 or \$165/mo. Not a Lease! You Own It!



1999 Jeep Wrangler SE

Soft Top, Super Sharp, Let's Go To The Beach!!
\$10,500 or \$166/mo. Not a Lease! You Own It!



1999 Buick LeSabre

Leather, CD, Power Seat, Loaded One Owner, Local Trade
\$10,900 or \$175/mo. Not a Lease! You Own It!



1999 Chevy Suburban SL

CD, Full Power, Xtra Clean
\$13,400 or \$244/mo. Not a Lease! You Own It!



2001 Oldsmobile Aurora

V6, A+, PW, PL, CC, Tilt, Very Clean
\$13,900 or \$220/mo. Not a Lease! You Own It!



2000 Chevy Blazer LS

GM Certified, 4x4, Cleanest in Town
\$14,200 or \$220/mo. Not a Lease! You Own It!



2001 Chevy Silverado

Local Trade, V6, A+, 21,000 miles, Bedliner
\$14,400 or \$225/mo. Not a Lease! You Own It!



2002 GMC Sonoma SLS

Ext. Cab, A+, Bedliner, Power Windows/Locks, CC
\$14,400 or \$233/mo. Not a Lease! You Own It!



1999 Dodge Durango SLT Plus 4x4

3rd Seat, Tow Package, Running Boards
\$15,750 or \$252/mo. Not a Lease! You Own It!



1999 Jeep Grand Cherokee Limited

4x4, Leather, Pwr. Seat, CD, Loaded
\$16,500 or \$270/mo. Not a Lease! You Own It!



2002 Mitsubishi Montero

AT, XLS, AWD, CD, New Tires, 22K
\$16,780 or \$275/mo. Not a Lease! You Own It!



2002 Dodge Dakota Quad Cab

4x2, A+, PW, PL, CC, Tilt, Bedliner
\$18,200 or \$296/mo. Not a Lease! You Own It!



2000 Infiniti QX4

4x4, Roof, Leather, CD, All Power Options
\$21,400 or \$349/mo. Not a Lease! You Own It!



2002 Ford Expedition XLT 4x4

14,000 miles, Local Trade
It's Perfect! \$24,959



1999 Chevy Silverado Ext Cab Mark III Conv.

37,000 miles, One Owner, **PAMPERED TRUCK!**



1998 Ford Explorer XLT

Leather, Sunroof, CD, 30K miles
NICEST IN TOWN!



2001 Chevrolet Blazer LS

2 Door, Only 17,000 miles! V6, Loaded

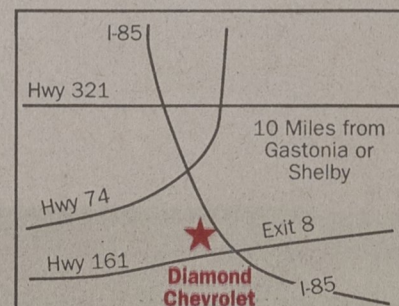
Diamond

CHEVROLET

KINGS MOUNTAIN



Exit 8, I-85/Hwy 161,
Kings Mountain, NC
704-739-6011
www.diamondchevy.com



*\$1000 Down, All prices plus tax, tag, & doc fee. OAC.