

Beneath the Surface

Still goes underwater to paint scenes for Florida exhibit

Christopher Still, internationally recognized artist, recently shared his paintings and knowledge of what is under Florida's springs and coral reef waters.

The show, called "Beneath the Surface," featured works from the final phase of the "Historic Mural Project" for the Florida House of Representatives. Over 2,000 in attendance viewed 40 of the artist's original works which were displayed in the venue's Grand Concourse, Ruth Eckerd Hall, Clearwater, FL.

The exhibition was the culmination of Still's four year commission to paint eight murals of the history of the state for the state capitol. On display were life size 5 x 13 feet studies and reproductions of the final two murals: "The Spring of Life," showing fresh water manatees with turtles and schools of fish, and "Beyond the Seven Mile Bridge," depicting the teaming life in a coral reef.

Still went to extraordinary lengths to capture every detail of the marine life he observed. Inventing a device that would allow him to sit on the bottom of the sea while wearing scuba gear, he could paint for hours at a time with "waves rocking him back and forth," he said. "I wanted to learn about my subject. I wanted this to be fine art."

The event included a panel of experts in the fields of history, music, film making, poetry, journalism, and art discussing the topic "Reflecting on Life Through Art in Florida." A performance by the popular Latin band Orquesta Infinidad and showing of the award winning documentary film "Backwater Elegy" also took place.

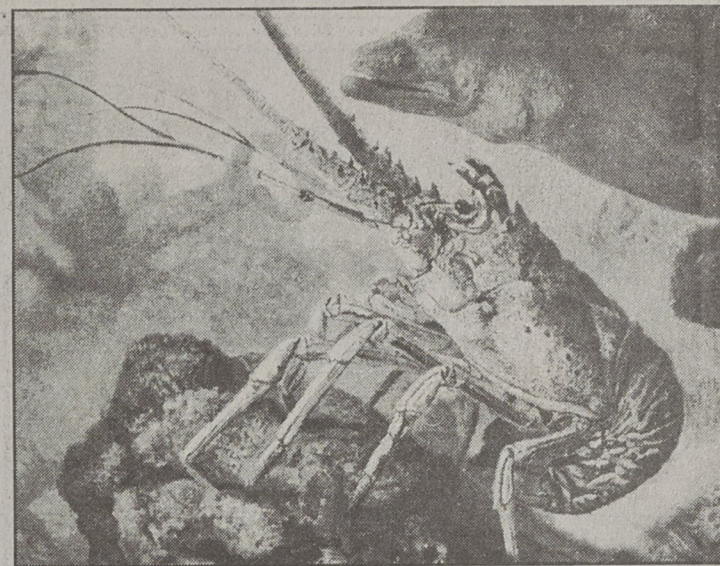
A graduate of the Pennsylvania Academy of Fine Arts with apprenticeships and studies in Europe of the great masters, Still has received a long list of awards, travel fellowships, and exhibitions. His paintings are in collection of the Smithsonian, The St.

Petersburg Museum of Fine Art, The Florida Governor's Mansion, and the Florida State Capitol.

Still is the son of Dr. and Mrs. John L. Still of Kings Mountain, and grandson of the late former Kings Mountain mayor, Mr. and

Mrs. Garland E. Still. He is the great-grandson of the late Mr. and Mrs. R.L. Mauney.

He was also commissioned to paint the portrait of the late Governor Lawton Chiles, unveiled at the Capitol in Tallahassee in 1998.



Christopher Still, son of Dr. and Mrs. John Still of Kings Mountain, sat on the bottom of the sea to paint these scenes for 'Beneath the Surface' exhibit in Florida.



www.shelbymotor.com • www.shelbymotor.com • www.shelbymotor.com • www.shelbymotor.com • www.shelbymotor.com • www.shelbymotor.com • www.shelbymotor.com •

THERE'S A NEW FULL-SIZED TRUCK DEALER IN TOWN!



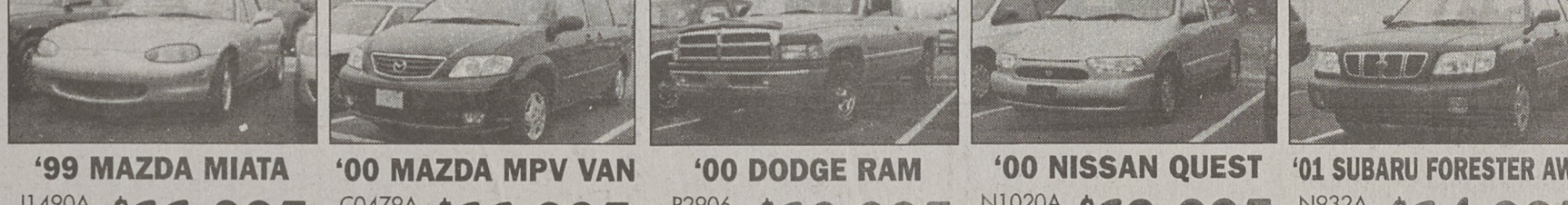
NEW '04 TITAN CREW CAB V8 N1142 MSRP \$30,709 **SALE \$27,448**
NEW '04 TITAN KING CAB V8 N1141 MSRP \$27,909 **SALE \$24,921**
NEW '04 FRONTIER CREW CAB V6 N1136 MSRP \$22,509 **SALE \$18,706***
NEW '04 FRONTIER CREW CAB V6 N1128 MSRP \$23,809 **SALE \$19,873***



'99 CHEVY MALIBU N1132A \$6,995
'99 NISSAN FRONTIER P2897 \$7,995
'98 TOYOTA 4-RUNNER J1554A \$8,995
'00 BUICK REGAL N996A \$8,995
'01 NISSAN FRONTIER J1566A \$9,995



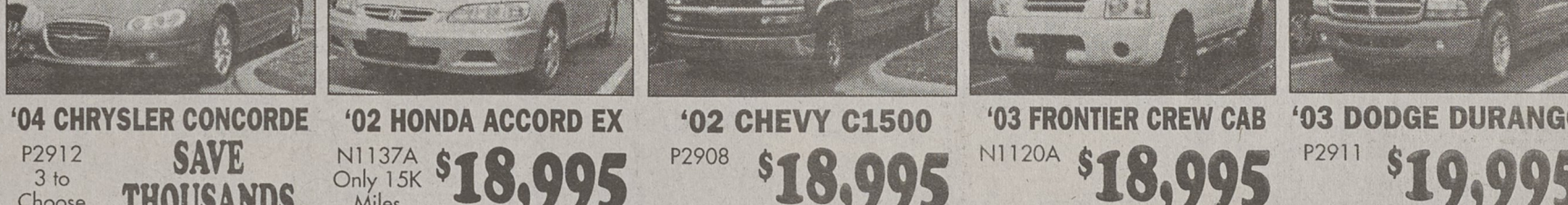
'98 TOWN & COUNTRY C4090A \$9,995
'99 FORD WINDSTAR P2869A \$9,995
'03 DODGE NEON P2922 \$10,995
'00 HONDA CIVIC J1508A \$10,995
'01 DODGE CARAVAN C4097A \$11,495



'99 MAZDA MIATA J1490A \$11,995
'00 MAZDA MPV VAN C0479A \$11,995
'00 DODGE RAM P2906 \$12,995
'00 NISSAN QUEST N1020A \$13,995
'01 SUBARU FORESTER AWD N932A Only 15K miles \$14,995



'01 FORD ESCAPE N1082A \$15,995
'03 CHRYSLER CONCORDE P2868 \$16,995
'02 FORD WINDSTAR N1106A \$16,995
'02 JEEP GRAND CHEROKEE P2885 \$16,995
'03 JEEP LIBERTY P2926 \$17,495



'04 CHRYSLER CONCORDE P2912 3 to Choose **SAVE THOUSANDS**
'02 HONDA ACCORD EX N1137A Only 15K Miles \$18,995
'02 CHEVY C1500 P2908 \$18,995
'03 FRONTIER CREW CAB N1120A \$18,995
'03 DODGE DURANGO P2911 \$19,995



'01 TOYOTA SOLARA CONV. 2871A \$19,995
'03 DODGE DURANGO P2915 \$19,995
'02 MERCURY MOUNTAINEER P2886 \$21,995
'04 JEEP CHEROKEE 4X4 P2925 \$24,995
'04 CHRYSLER PACIFICA J1544A \$26,995

Shelby Nissan • Chrysler • Jeep
 CHRYSLER Includes \$2000 Rebate Off
SALES HOURS: Mon.-Fri. 9am-7pm Saturday 9am-5pm
1-704-484-0049
1310 E. Dixon Blvd., Shelby, NC
 CHRYSLER NISSAN SHIFT the road.

BRIEFS

Ministry to note first anniversary

Women of Noble Character Ministries will celebrate its first anniversary at 2:30 p.m. February 28 at the Grover Rescue Squad.

Rev. Carol Davis, pastor of Saint Paul and Galilee United Methodist churches, will speak on "Celebrating God's Woman: 100 Women in Gold."

Lunch will be served from 1-2 p.m.

For more information call 739-1261

Bluegrass revival set at Cornerstone

There will be a bluegrass revival Sunday, Feb. 29 at 6 p.m. at Cornerstone Church of God, 202 Margrace Road, Kings Mountain.

For more information call 739-3773.

Dinner March 7 at Grace Methodist

A dinner is scheduled March 7 from 12:30-2 p.m. at Grace United Methodist Church in Kings Mountain.

Admission is free but donations will be accepted for the Relay for Life.

For more information call the church at 739-6000.

Food distribution March 10 in Shelby

The March distribution of surplus commodities is scheduled for Wednesday, March 10 at 8 a.m. at the Cleveland County Fairground.

The Shelby Lions Club will be distributing the food. Those who wish to apply for food will not receive a card in the mail from DSS. A card will not be required to receive food, but some kind of I.D. will be needed.