

**HOME OF THE  
FIRST TIME  
BUYERS  
PROGRAM!**

# Diamond

**GM Certified  
VEHICLES**

**0% apr**

financing available  
on all 04's\*

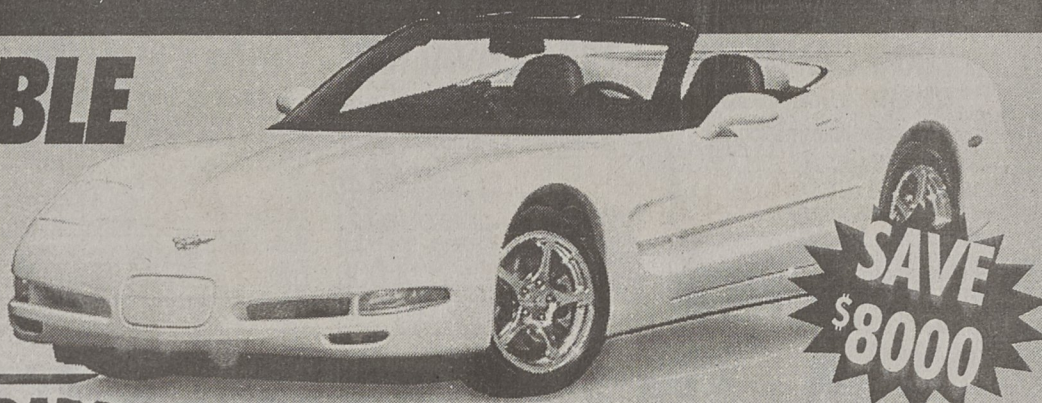
**CHEVROLET  
KINGS MOUNTAIN**

**WWW.DIAMONDCHEVY.COM**

## '04 CORVETTE CONVERTIBLE

40th  
Anniversary  
Edition

Starting at **\$48,530**



**SAVE  
\$8000**

INTRODUCING '04 AVEO

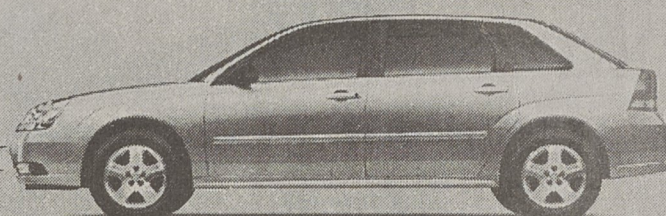


'04 COLORADO



CHEVROLET'S ALL-  
NEW MIDSIZE TRUCK!

INTRODUCING '04 MALIBU MAXX



SHOP OUR ENTIRE INVENTORY ONLINE at [sales@diamondchevy.com](mailto:sales@diamondchevy.com)

<p><b>'03 MONTE CARLO</b> Tan, PW, PL, tilt, cruise, loaded <b>\$247</b> per mo</p>	<p><b>'03 DODGE RAM QUAD CAB</b> 2WD, 29K, graphite, loaded <b>\$354</b> per mo</p>	<p><b>'03 DODGE STRATUS SE</b> Silver, PW, PL, 31k <b>\$189</b> per mo</p>	<p><b>'04 PONTIAC GRAND PRIX GT</b> White, loaded, 25k <b>\$319</b> per mo</p>	<p><b>'03 S-10 REG. CAB</b> Nice, only 10k <b>\$179</b> per mo</p>	<p><b>'04 DODGE INTREPID</b> Gold, 30k, nice <b>\$289</b> per mo</p>
<p><b>'03 PONTIAC GRAND PRIX SE</b> 26k, loaded, nice <b>\$207</b> per mo</p>	<p><b>'03 CHEVY S-10 EXT. CAB</b> White, only 19k miles <b>\$249</b> per mo</p>	<p><b>'03 MITSUBISHI MONTERO 4x4</b> Sidestep, 70k, automatic, clean <b>\$212</b> per mo</p>	<p><b>'01 FORD F150 XLT</b> 2WD, 57k, green, loaded <b>\$274</b> per mo</p>	<p><b>'01 OLDSMOBILE AURORA</b> Tan, PW, PL, tilt, cruise, loaded <b>\$239</b> per mo</p>	<p><b>'01 FORD F150 XL</b> Ext. Cab, green, 6 cyl, 31k <b>\$249</b> per mo</p>

**OVER 50 CARS AND TRUCKS UNDER \$9,995!**

<p><b>2002 Chevy LS Cube Van</b> 61K miles, PL, PW, tilt, cruise, auto, V6 <b>\$249</b> per mo</p>	<p><b>2001 Saturn SL1</b> Auto, blue, 4-door, 49K miles, nice <b>\$129</b> per mo</p>	<p><b>2001 Dodge Grand Caravan</b> 70K, loaded, rear heat &amp; air <b>\$219</b> per mo</p>	<p><b>2003 Chevy Silverado LT 4x4</b> Green, only 40k <b>\$417</b> per mo</p>	<p><b>1998 Honda Accord</b> Leather, auto, PW, PL, silver, 85K miles <b>\$219</b> per mo</p>	<p><b>2003 Mercury Sable</b> White, V-8, 27k, Loaded <b>\$199</b> per mo</p>
<p><b>2003 Dodge Neon</b> Red, 30K miles, auto, clean <b>\$139</b> per mo</p>	<p><b>2003 Kia Sedona LX</b> 4WD, dark gray, loaded, 39K miles <b>\$249</b> per mo</p>	<p><b>2003 Chevy Malibu</b> Tilt, PL, PW, CD, 30K miles <b>\$179</b> per mo</p>	<p><b>2000 Pontiac Grand Am</b> Blue, 41K miles, PW, PL, tilt, cruise, nice car! <b>\$169</b> per mo</p>	<p><b>2003 Chevy Tahoe LS</b> Powder, Leather, Loaded, WOW Only 18K <b>\$389</b> per mo</p>	<p><b>2003 Chevy Impala</b> 24K, PW, PL, Tilt, Cruise, Air <b>\$238</b> per mo</p>

**LET UNCLE SAM PUT YOU IN THE CAR YOU'VE ALWAYS WANTED!**

<p><b>2001 Mazda Tribute</b> PW, PL, Tilt, Cruise, Power Roof, White, Auto. <b>\$288</b> per mo</p>	<p><b>2001 Chevy Silverado LS</b> 2WD, leather, loaded, powder, only 56K miles <b>\$359</b> per mo</p>	<p><b>2001 Olds Silhouette</b> Loaded, PW, PL, 44K miles <b>\$299</b> per mo</p>	<p><b>2000 Chevy Tahoe</b> Red, auto, PW, PL, tilt, cruise, 70K <b>\$299</b> per mo</p>	<p><b>2002 Chevy Cavalier</b> Auto, PW, PL, tilt, cruise <b>\$139</b> per mo</p>	<p><b>2000 Acura TL</b> Leather, PW, PL, tilt, cruise, loaded! 50K <b>\$299</b> per mo</p>
---	--	--	---	--	--

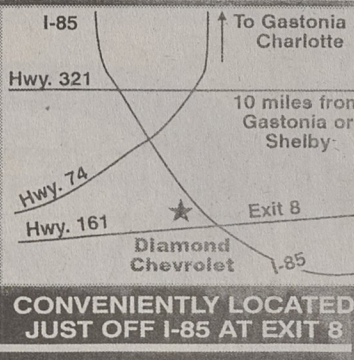
\*Excludes SSRs. All new vehicles include all applicable rebates plus tax, tag and fees. OAC. All pre-owned vehicles based on 10% down, plus tax, tag and fees. 72 mos., OAC.

**STORE HOURS  
FOR YOUR SHOPPING  
CONVENIENCE!**  
MON.-FRI.  
9AM - 8PM  
SAT. 9AM - 6PM

# Diamond

**CHEVROLET  
KINGS MOUNTAIN**

Exit 8 I-85 • Hwy. 161  
Kings Mountain, NC  
Toll Free 1-877-204-2946!



**GOT CREDIT PROBLEMS?  
WE CAN HELP!**  
**704-739-6011**  
\$2500 DOWN AND YOU RIDE TODAY!  
**GUARANTEED APPROVAL!**

*We Have Lenders That Other Dealers Never Heard Of!!*

**"THE MOST DEPENDABLE, LONGEST LASTING TRUCKS ON THE ROAD"**

**1-704-739-6011**

Visit our cyberlot @ <http://www.diamondchevrolet.com>

**CHEVROLET WE'LL BE THERE**