

## SCHOOLS

### Four named to WCU honor roll

Four Kings Mountain students were named to the dean's list at Western Carolina University for the spring semester.

Those students include Melissa Gray Cook, Ashley Rae Norris, Jennifer Lynn Scism and Karen Renee Shytles.

### Lambert completes residency training at UNC-Chapel Hill

Dr. Jill Jimison Lambert has completed her training as a resident in family practice medicine at the UNC Hospitals and the School of Medicine at UNC-Chapel Hill.

A graduation dinner was held June 19 at the William and Ida Friday Center in Chapel Hill.

Lambert is the



Dr. Jill Lambert

daughter of Mike and Darlene Jimison of Kings Mountain.

She is a 1993 Kings Mountain High School graduate.

She received her doctor of medicine degree in 2001 from the Brody School of Medicine at East Carolina University.

Lambert will join North Point Medical Associates in Winston-Salem in August.

She and her husband Chad Lambert have one son, Noah Thomas Lambert. They will make their home in Kernersville.

### Kubu accepted to Universiteit van Amerstam for year

Heather Kubu of Kings Mountain has been accepted to the Universiteit van Amsterdam in the International School for Humanities and Social Sciences for the upcoming academic year.

She will spend approximately 11 months in Amsterdam before returning

to UNC-Charlotte for a semester before graduating with a bachelor of arts degree.

Along with acceptance to the university, Kubu has received acceptance to The 2003-2004 National Dean's List.

Only one percent of colleges students are accepted nationwide.

To be nominated, students must be on the dean's list or have a comparable academic achievement, have a B-plus average or be in the upper 10 percent of their class.

Students then must be nominated by professors or deans from their university and submit an application to the list.

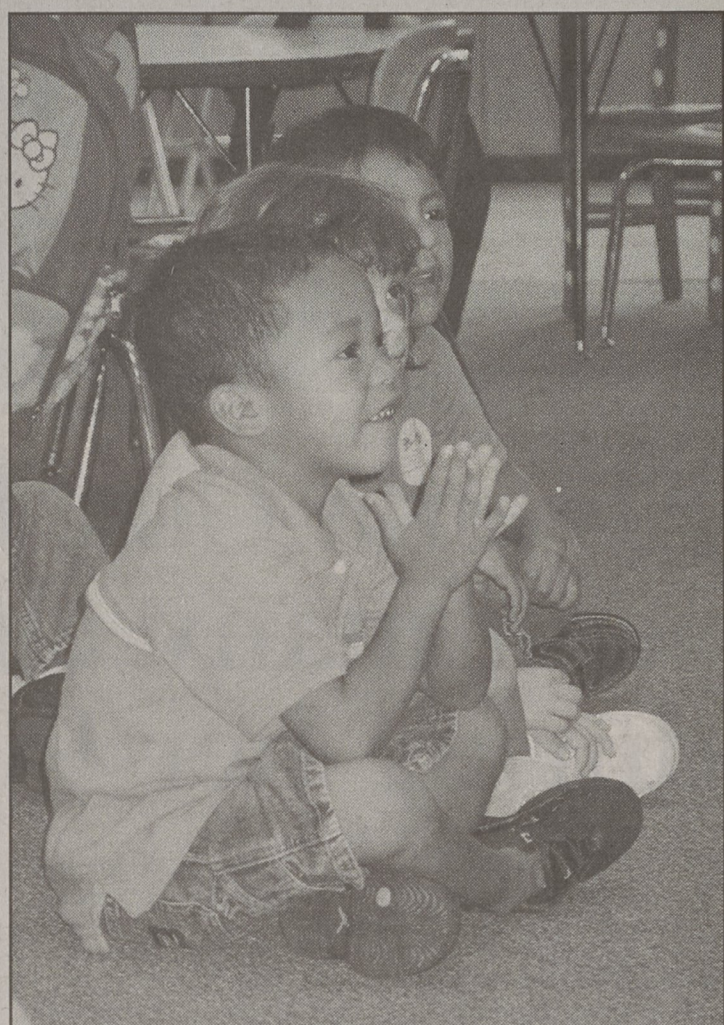
Kubu is currently a junior at UNC-Charlotte majoring in history with a concentration in World War II and the Holocaust.

She is a 2002 Kings Mountain High School graduate and a 2004 Cleveland Community College mechanical drafting technology certificate recipient. She is the daughter of Toni and Jerry Kubu of Kings Mountain.

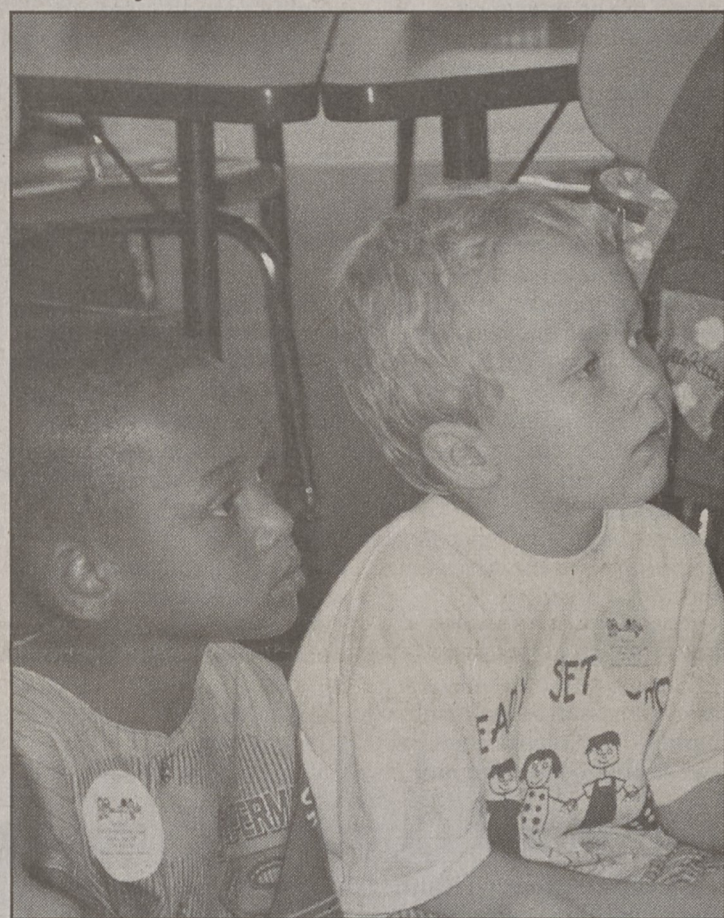


Heather Kubu

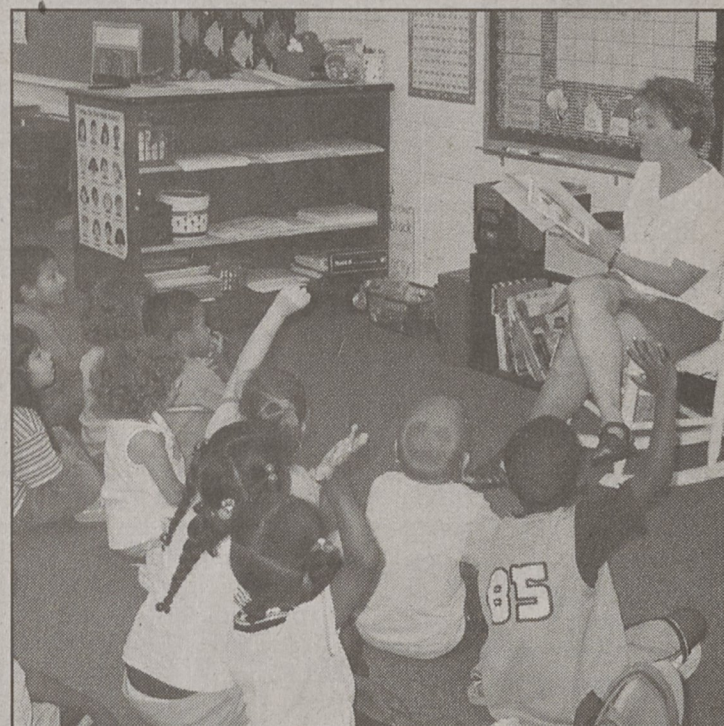
## Ready, Set Grow



Quinton Nguyen learns about kindergarten while participating in the Ready, Set, Grow program at Bethware Elementary.



Zeldon Roberts, left, and Cody Wright listen to a story during the Ready, Set, Grow program at Bethware Elementary.



Teacher Page Ozmore reads a story to Ready, Set, Grow students.

### Young students prepare for kindergarten with the Ready, Set, Grow program

BY ANDIE L. BRYMER  
Staff Writer

Ready, Set, Grow is preparing students for kindergarten.

The program, with sites at Bethware, East and Grover elementary schools, focuses on language, motor and social skills.

Students also review colors, numbers and body parts.

Kindergarten teacher Brenda Wright has been with the program since it began seven years ago.

She has watched as students who arrived timid quickly get used to the classroom.

Students also learn

through field trips to the library and YMCA. A nurse coordinates immunization records. A staffer from the Parent Center is also part of Ready, Set, Grow.

Assessment tests help teachers know which areas individual students need to work on.

The program pays off especially when students face end of grade testing a few years later, Wright said.

The free program takes place each June. Children attend class from 8 a.m. to 1 p.m.

Ready, Set, Grow has won the Governor's Award for Excellence and was featured during a state Best Practices Seminar.

## TRUCKLOAD SALE

"Cecil's Pumping Out Low Prices!"



Often Imitated, Never Duplicated!

# The High GAS PRICE BUSTER

(The Original)

04 NISSAN SENTRA

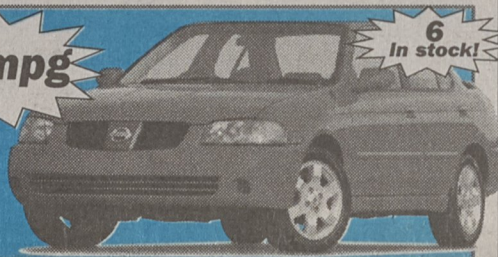
\$2,500 Rebate

or \$1,000 Cash Back

plus 0.9% APR up to 60 mos.

35 mpg

6 In stock!



\$1,000 Cash Back or 1.9% APR

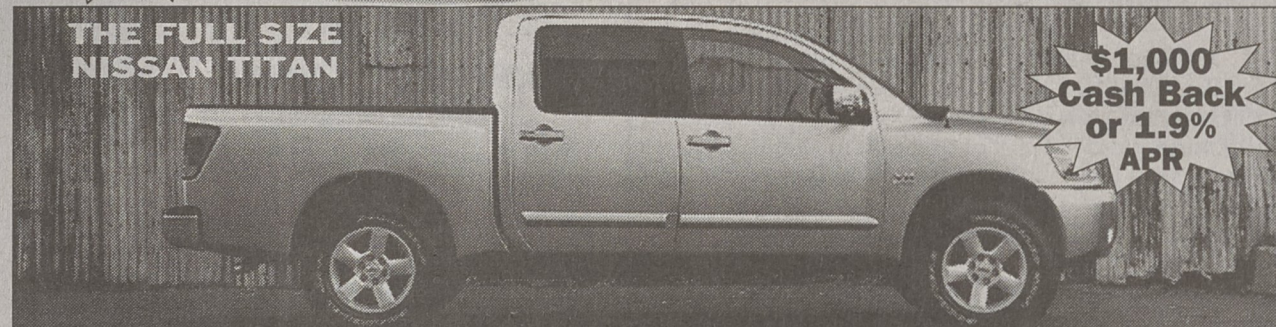
04 NISSAN QUEST

04 NISSAN ARMADA

The FULL Size Event!



THE FULL SIZE NISSAN TITAN



\$1,000 Cash Back or 1.9% APR

04 NISSAN PATHFINDER SE 4X4



N1118. Leather, Loaded.

MSRP \$35,850  
\$278.08 per mo. \*

3 In stock!

04 NISSAN ALTIMA



N1154.

MSRP \$20,110  
\$239 per mo. \*\*

3 In stock!

04 NISSAN XTERRA



N1134.

MSRP \$23,679  
\$319 per mo.

3 In stock!

04 NISSAN MAXIMA

\$1,000 Rebate

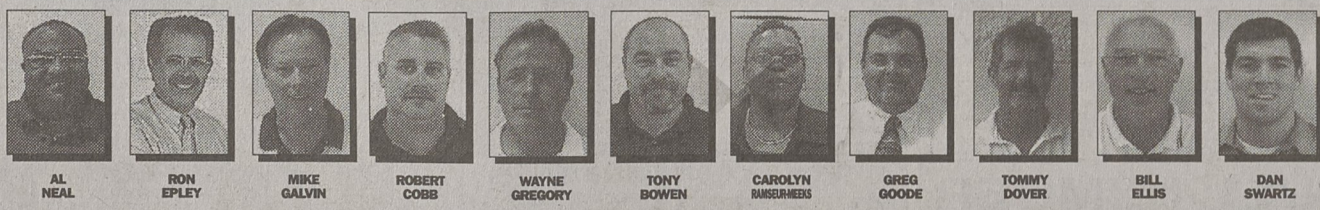
or 1.9% APR

8 In stock!



\*60 mos. lease, \$5,000 down or trade equivalent plus tax, tag and fees. 740 beacon OAC. \*\*39 mos. lease w/\$1,464 due at signing.

OVER 100 PRE-OWNED VEHICLES AVAILABLE



AL NEAL

RON EPLEY

MIKE GALVIN

ROBERT COBB

WAYNE GREGORY

TONY BOWEN

CAROLYN HERRMANN

GREG GOODE

TOMMY DOVER

BILL ELLIS

DAN SWARTZ



# Shelby Nissan

1-704-484-0049

www.shelbynissan.com

1310 E. Dixon Blvd. • Shelby, NC

Hours: Mon.-Fri. 9-7 Sat. 9-5