

EDUCATION

Alan Adams winner in KMMS geography bee

BY ANDIE L. BRYMER
Staff Writer

What river marks Iowa's eastern border? Name the mountain range which makes up the Continental Divide? Prime Minister Ariel Sharon began construction in 2002 on a controversial wall in what Middle Eastern country?

These were just a few of the questions Alan Adams answered correctly to win the Kings Mountain Middle School Geography Bee Thursday morning.

Adams, an eighth grader, said his seventh grade social studies class helped.

"I just remembered everything I learned," he said.

Adams also prepared by studying atlases.

The geography whiz said he wants to travel and see how other people live.

Social studies instructor Tim Reed coordinated the bee. He's upbeat about Adams chance of advancing to the state competition.

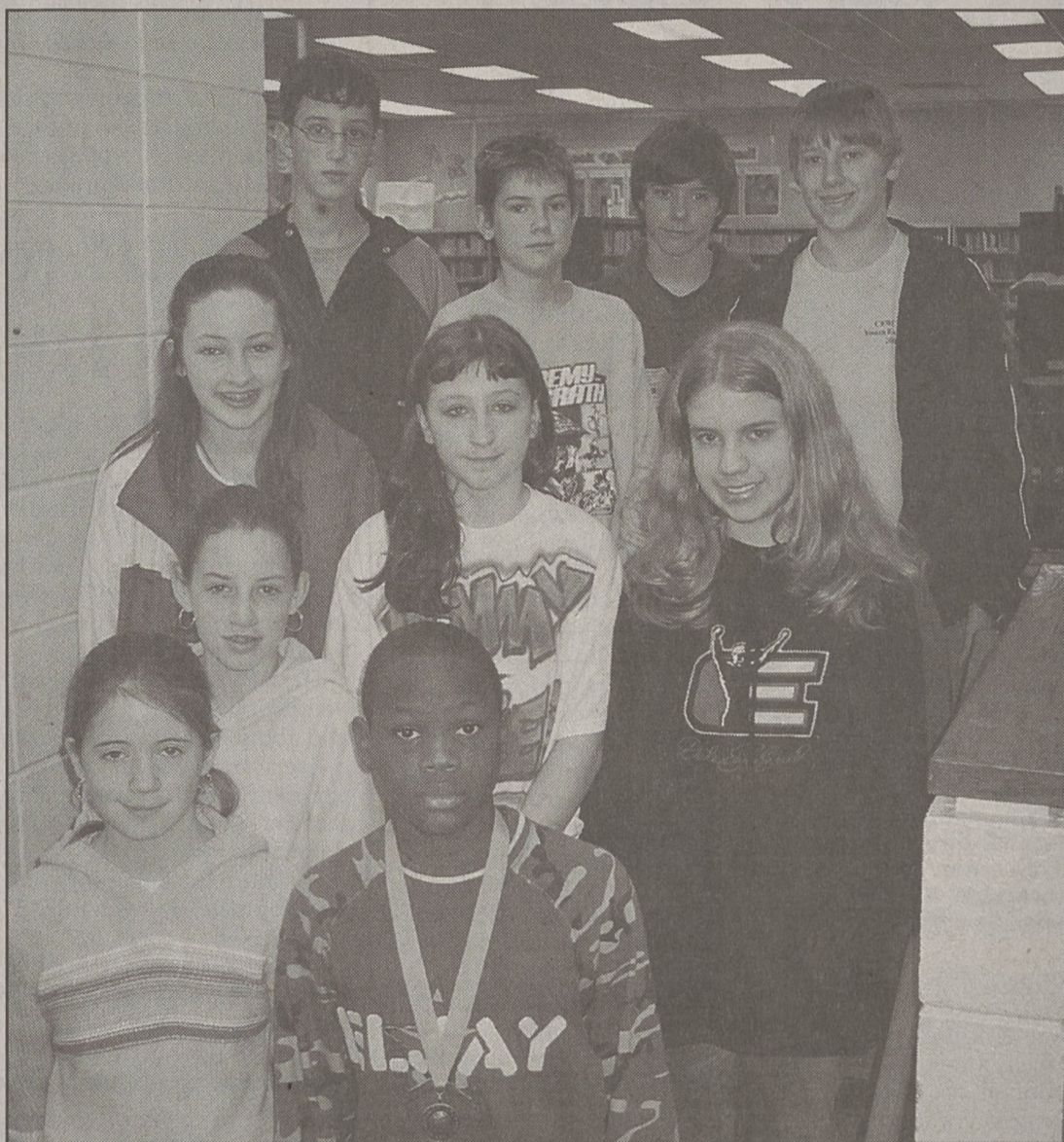
"I've never had a student get as many right as he did," Reed said.

Television shows like the "Amazing Race" and news programs pique students interest in geography, according to Reed.

"It's neat to give them a global perspective," Reed said.

Students were particularly interested in knowing more about the south Asian nations hit by a tsunami, he said.

Adams will take a 70-question test which will determine if he is one of the 100 students from across



ANDIE L. BRYMER/HERALD
Kings Mountain Middle School Geography Bee winner Alan Adams stands front and center with runners up Courtneigh Bumgardner, left, front, Erica Moore, second row, left, Sydney Gregroy, third row, left, Renee Weaver, Sara Ellis, Cline Tate, left, rear, Taylor Gettys, Joel Spirlin and Tyler Black.

North Carolina to advance to state level competition in Raleigh.

The geography bee is sponsored by the National Geographic Society and includes students across the

United States, five U.S. territories and Department of Defense schools around the world.

Winners at the state level will compete in a national bee in Washington, D.C. for

a \$25,000 scholarship.

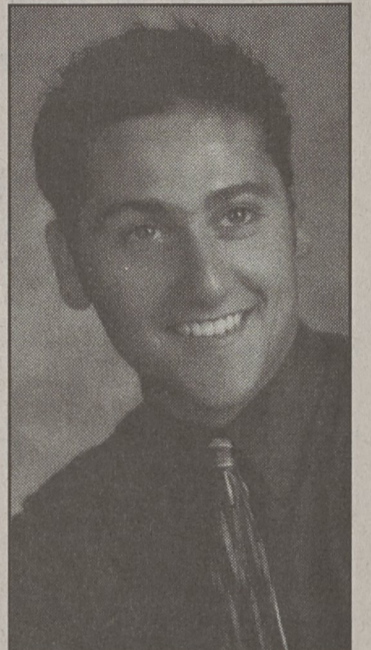
Before Christmas, the entire school divided into teams and competed. Those 10 winners took part in Thursday's competition.

Santora selected for International Scholar delegation

Joel Santora of Kings Mountain, a pre-med student, was recently named to the Chancellor's List for the semester at East Carolina University.

To make the list one must achieve a 4.0 grade point average.

In addition, as a member of the National Society of Collegiate Scholars (NSCS), Santora has earned a nomination to join an elite group of outstanding students to serve in the 2005 International Scholar Laureate Program Delegation on medicine in his choice of Australia, Brazil, China or South Africa.



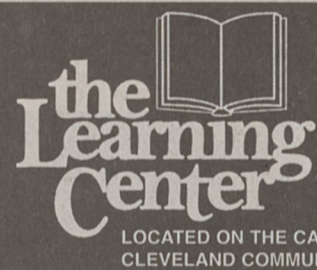
JOEL SANTORA

Santora will take part in career-focused study, excitement and adventure in his choice of locale. He will begin a unique, life-changing journey of medical and cultural exploration that will fuel his ambition and provide him with a tremendous head start toward his dream of becoming a medical professional.

Students participating will study and learn from distinguished medical leaders and researchers at top hospitals and universities. Those include The University of Sydney School of Medicine and James Cook University in Australia; The University of Natal - Nelson Mandela School of Medicine and The Medical University of Witswatersrand in South Africa; Peking Union Hospital College and Chengdu University of Traditional Chinese Medicine in China; or The Federal University of Rio de Janeiro and the Ministry of Health's Osvaldo Cruz Foundation in Brazil.

Students will observe how modern medicine interacts with one of four distinctly different cultures. Students going to Australia will see an airbase of the unique Royal Flying Doctors who reach out and treat people of the outback; in South Africa, they will experience the many challenges of caring for growing numbers of HIV/AIDS patients; in China they will witness first hand the interrelationship between western medical science and traditional Chinese healing; and in Brazil they will learn how public health officials mobilize to proactively treat disease and promote good health for a diverse population.

Do it for Your Career, Do it for Your Family, **Do it for YOU!**



Start working on your high school diploma or learn to speak English! Classes are free and you can work at your own level and pace. We can help you reach your goals.

Do it today!

SPRING 2005

CLASS	SITE	INSTRUCTOR	DAYS	TIME
ABE	Campus - Room 3116	Haney, R.	MTWTH	8:00 AM - 1:00 PM
ABE	Campus - Room 3112	Perry, D.	MTWTH	8:00 AM - 1:00 PM
AHS	Campus - Room 3105	Parker, A.	MTWTH Friday	8:00 AM - 9:00 PM 8:00 AM - 4:00 PM
GED	Campus - Room 3105	Parker, A.	MTWTH Friday	8:00 AM - 9:00 PM 8:00 AM - 4:00 PM
ABE	Campus - Room 3116	Lovelace, K.	MTWTH	5:00 PM - 9:00 PM
ABE	Campus - Room 3112	Jenkins, E.	MTWTH	5:00 PM - 9:00 PM
CLASSES AT OTHER CLEVELAND COUNTY LOCATIONS				
ABE/GED	Day Reporting Center 308 Gardner St. - Shelby	Petty, C.	MTWTHF	8:00 AM - 12:00 PM 1:00 PM - 4:00 PM
ABE	Job Link - ESC 404 E. Marion St. - Shelby	Sims, D.	MTWTHF	8:30 AM - 12:30 PM 1:00 PM - 4:00 PM
ABE	U-Can/Bliss Center Main St. - Lawndale	Staff	MTTH	6:00 PM - 9:00 PM
CED	Harvest Works	Phifer, P.	MTWTHF	9:00 AM - 12:00 PM
ABE	Adventure House - Shelby	Phifer, P.	TTH	1:00 PM - 3:00 PM
ABE	First Baptist Church 605 W. King St - Kings Mtn	Hoyle, B.	MTWTH	9:00 AM - 12:00 PM
ABE	East Elementary School 600 N. Cleveland Ave. - Kings Mtn	Hoyle, B.	MTTH	6:00 PM - 9:00 PM

Start a Neighborhood Program!

Are you interested in helping those in your community learn to read, to speak English, or to finish high school? You can start a neighborhood program at your church or somewhere in your community. Programs will be offered whenever and wherever there is a need with a minimum of 10 students. Cleveland Community College will offer courses off-campus upon request. For more information contact Rosaline Hunt, Dean of Basic Skills, at 704-484-4062.

Do it for YOU! Call 704-484-4050
www.clevelandcommunitycollege.edu