



BETH SUBER

Beth Suber Gaston County Teacher of the Year

Beth Suber was named Gaston County Schools Teacher of the Year at an awards presentation dinner at Cramer Mountain Country Club on May 10.

The Outstanding Educator Awards are sponsored by the Wachovia Corporation in conjunction with the McKenney Family Dealerships and Gaston County Schools. Teachers of the Year and their spouses and principals from the 53 schools in Gaston County were invited in addition to Gaston County Schools Administration and Board of Education.

Beth is on the faculty of the Science and Technology Academy at Grier Middle School in Gastonia, teaching 7th grade science and social studies. She will be one of 20 recipients of the 2007 Time Warner Cable National Teacher Award in Washington, D.C., in June.

Prior to going to Gaston County Schools two years ago, Beth was a teacher at Leesville Road Middle School in Wake County, where she was a Kenan Fellow, a program which facilitates conversations between its fellows and State Superintendent

Howard Lee, state legislators, and First Lady Mary Easley. Her Kenan project, "Expanding Our Horizons: Understanding Science Through Career Explorations," which enabled her students to learn about careers of interest to them, involved the participation of many professional men and women, including Kings Mountain dentist, Dr. G. K. Howard, Jr., and his staff.

She was also the November 2003 Featured Teacher for Sea World of Orlando, FL, and a finalist for the 2004 Wake County PTSA Outstanding Teacher

Award. She has been a presenter at the North Carolina Middle School Association Conference and the National Science Teachers Association Regional Conference and has written and received grants in Wake County and Gaston County Schools.

As GCS Teacher of the Year, Beth received the Wachovia Corporation Educator Apple, a hand-worked crystal apple with signature silver veils by North Carolina artist, Gilbert Johnson, a new car of her choice from the McKenney Family Dealerships

for one year; and a cash award for professional advancement. She will represent Gaston County Schools during the 2007-2008 school year through speaking engagements, committees, and competition in the fall for Southwest Region of NC Teacher of the Year.

Beth and her husband, Lindsay, reside in Gastonia and are members of St. Matthew's Lutheran Church in Kings Mountain. She is the daughter of Rutherford County Schools educators, Clarence and Cindy Campbell.

Jessica Yarbro wins National Merit Scholarship

EMILY WEAVER

eweaver@kingsmountainherald.com

Senior Jessica Yarbro recently won a National Merit Scholarship, the first to be awarded to a student at KMHS in many years, said Guidance Counselor Donna Tucker.

She took the Preliminary SAT in the Fall of her junior year in high school. She aced it (no pun intended to her volleyball victories at KMHS).

The National Merit Scholarship Corporation sent her and KMHS a letter declaring her success. It said that she has won a corporate-based Merit Scholarship award, a PPG Industries Foundation Community Scholarship, in the amount of \$6,000.

"Every little bit helps," she

said. Several other scholarships will also help her finance her education. "I hope that I'll have a pretty big chunk taken out of what I'll have to pay," she added, especially since she plans to attend dental school after four years at UNC-Chapel Hill.

The typical National Merit scholarships are worth \$2,500 each. But since Yarbro was selected by PPG, she is receiving over twice as much financial aid to go to college this Fall. She said that for her undergraduate degree she may major in Chemistry.

She got the letter bearing the good news of her national scholar success in April. "I actually didn't see the letter first, because I had a softball game that day. My grandmother was home before we were because we went to eat afterwards," she said.

Her grandmother opened it thinking it would be a letter stating NMSC would let them know soon, since it was in a normal envelope. "I called my mom on the way home and she told me. I was really excited," Yarbro said. "I feel honored to have gotten this."

When asked if she makes mostly A's and B's in school, she smiled modestly and said, "I make straight A's." She has never made a B or at least not in high school and is graduating at or near the top of her class with a GPA around 4.8.

Yarbro, the daughter of John and Regina Yarbro, plans to be as active in college as she was in high school, but maybe not so much in sports (outside of intramurals). At KMHS, she is a member of the volleyball and softball

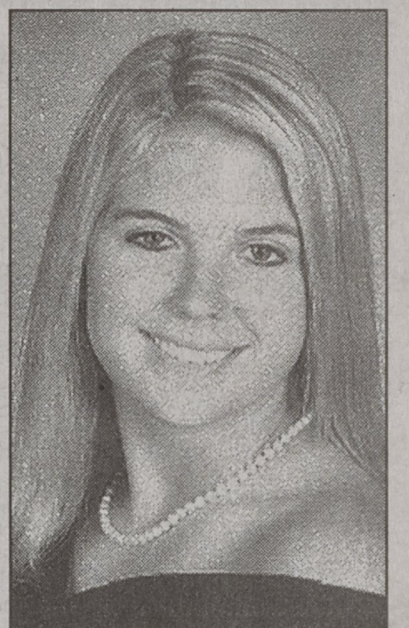
teams, band, National Honor Society, Fellowship of Christian Athletes, Beta Club, Science Club and Ambassador's Club. She has played the clarinet since 7th grade and plans to be in the marching and pep bands at UNC-CH.

According to nationalmerit.org, "High school students enter the National Merit Program by taking the PSAT/National Merit Scholarship Qualifying Test—a test which serves as an initial screen of approximately 1.4 million entrants each year—and by meeting published program entry/participation requirements." If a student answers questions on the PSAT to the satisfaction of NMSC and fulfills the program requirements, then they are eligible for the NMS

program.

Only 50,000 candidates receiving the highest PSAT selection index scores make it through to the next round. About 34,000 of the 50,000 students are given commendations. The remaining 16,000 make it to the semi-finalist ring, each vying for a finalist title, given to about 15,000 students nationwide. Of those 15,000, only about 8,000 receive national merit scholarships.

According to NMSC, selectors evaluate "the Finalist's academic record, information about the school's curricula and grading system, two sets of test scores, school official's written recommendation, information about the student's activities and leadership, and the Finalist's own essay" to make their final decisions.



JESSICA YARBRO



Left to right, Eddie Holbrook, Dean of Community Relations & Development; Dr. Steve Thornburg, President; Hoyt Q. Bailey, Chairman, CCC Board of Trustees; Mike Iezzi, Eaton Plant Manager; Mark Early, HR Manager.



Left, left to right, Tiffany Six (student), B.J. Zamora, President of Hearts and Hooves; Mark Early, HR Manager of Eaton Corp.; Monquavis Surrat, student; Mike Iezzi, Plant Manager, Eaton Corporation; Connie Elmore, Board member, hearts and Hooves; and Nellie Aspel, Principal, North Shelby School.

Eaton donates money to CCC Foundation and Cleveland County Hearts and Hooves

Diversified industrial manufacturer Eaton Corporation announced today it has donated \$15,000 to the Cleveland Community College Foundation (CCCF) and \$15,000 to Cleveland County Hearts and Hooves.

Funds donated to CCCF will be used to support a capital campaign for the construction of a continuing education and conference center. Local industry and the community will have the opportunity to use the facility for meetings and events. As part of its hiring process, Eaton works with the continuing education department at Cleveland Community College by having eligible applicants complete the manufacturing certification program at the school. Approximately 150 graduates of the certification program have been hired by Eaton.

Cleveland County Hearts and Hooves provides therapeutic horseback riding services to children and young adults with disabilities to improve their communication, social, academic, behavior and motor skills. Funds will be used to underwrite costs to build an ecological park on the campus of North Shelby School, a special purpose public school

for students, ages three to 21, with cognitive disabilities. The park will accommodate both therapeutic horseback trail riding and walking on handicapped accessible trails.

"Ensuring these organizations are able to continue providing education and specialized support to those in need is very important," said Mark Early, manager, Human Resources, Eaton's Kings Mountain facility. "It feels good to work for a company with such a strong tradition of giving back to the community."

Eaton's facility in Kings Mountain is part of the company's Truck Group and employs approximately 500 people who manufacture and assemble

transmissions for the heavy-duty truck market.

Eaton Corporation is a diversified industrial manufacturer with 2006 sales of \$12.4 billion. Eaton is a global leader in electrical systems and components for power quality, distribution and control; fluid power systems and services for industrial, mobile and aircraft equipment; intelligent truck drivetrain systems for safety and fuel economy; and automotive engine air management systems, powertrain solutions and specialty controls for performance, fuel economy and safety. Eaton has 61,000 employees and sells products to customers in more than 125 countries. For more information, visit www.eaton.com.

Why Rent When You Can Own?

Turn Key Pricing Includes:

- Delivery & Setup to County Code
- City Water & Sewer Connected
- Skirted with White Vinyl
- High efficiency 13 Seer Heat Pump
- Steps & Landing Included
- "Ready to Move Into"



Restricted Private Community in Belmont

GATO DEVELOPMENT COMPANY

(704) 825-2946

Call Bill Today to View On-site Models.

Financing Available. Owner-Occupied Homes Only. Seniors Welcome

IT PAYS

TO ADVERTISE IN THE KINGS MOUNTAIN HERALD. CALL 704.739.7496 TO RESERVE YOUR SPACE TODAY!

ON YOUR SIDE

We Cover the Front Door, Back Door and Everything in Between.

To find out more about our homeowners insurance — Call me... Stop by... Log on — it's your choice!



John Caveny
210 East King Street
Kings Mountain
739-3953
cavenyj@nationwide.com

We Support the NC State Highway Patrol Caisson Unit



Nationwide
On Your Side



Auto Home Life Business

Nationwide Mutual Insurance Company and Affiliated Companies, Home Office: Columbus, OH 43215-2220 HO6 11/00

C&J



Super Discount Grocery & Merchandise

421 N. Mountain St, Cherryville • 704-445-1400

Shop here first and you will find it—and pay less for it!

Peppercorn Pork Loin 2# \$2.00 • Refried Beans 10¢

Hot Wings 5# Bag \$5.99 • Gatorade 2-20 oz. \$1.00

Bologna 8# Rolls \$6.99 • Garlic Bologna 4# \$3.99/roll

Taco Dinners 50¢ • Taco Shells 10¢

Gatorade 3 qts. 32 oz. • \$2.00

Many Items Reduced This Week!

Hours: Monday - Saturday 9-6

GRAND OPENING

Outlaw Graphics & Signs

Signs, Banners, Lettering etc.

Outlaw Trailer Repair & Parts

2725 Lincolnton Hwy (Hwy 150 East)

Cherryville, NC

704-435-9200