

LOCAL

Partnership to sponsor Extreme Makeover

Mountaineer Partnership, the downtown revitalization non-profit for the City of Kings Mountain, has announced that it will partner with many downtown businesses to host "Extreme Makeover: Kings Mountain Edition."

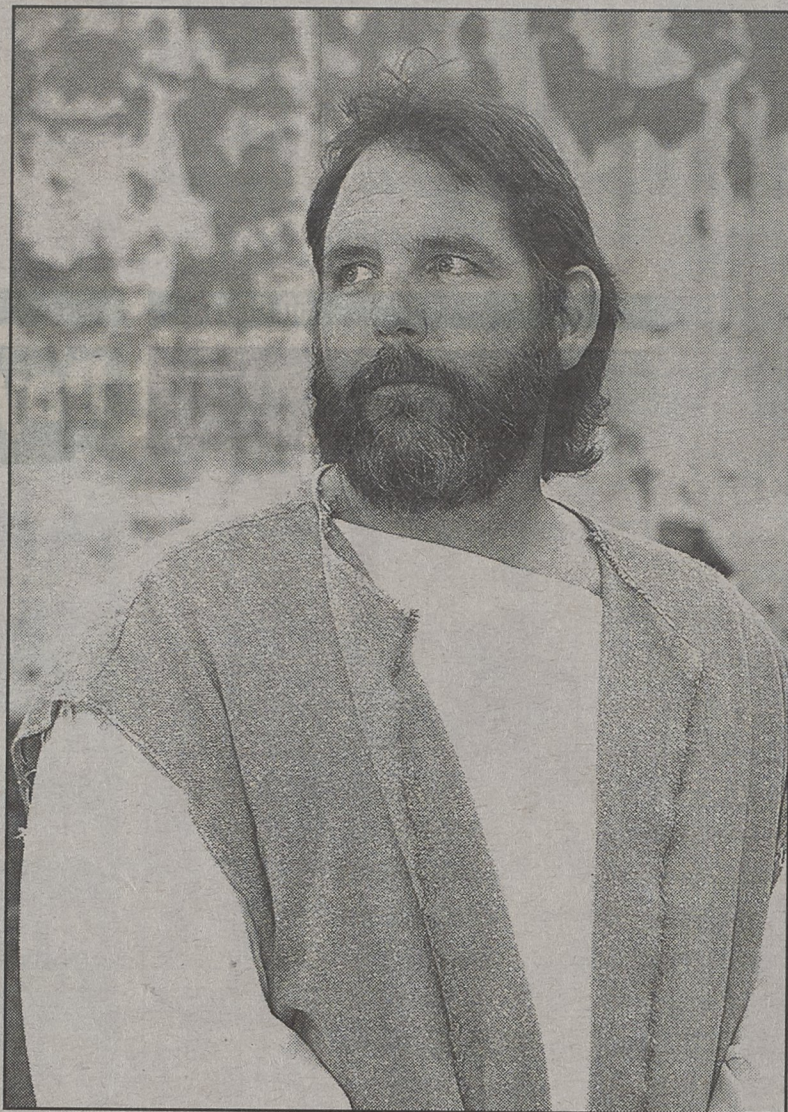
The idea was the brain child of Laurie Mancuso, owner of Bellus Tu Spa in Kings Mountain.

"Several Downtown business owners wanted to get together to do something for the community," Executive Director Caroline Dover said. "When Laurie came to me with the idea, I thought it was a great opportunity to promote downtown and help a deserving female."

To enter the contest, the applicant must be female and must be nominated. Women who have made it through difficult personal trials or have a unique personal situation are ideal candidates. The winning female will receive a complete makeover to include hair by Scissor Smith & Company, mineral make-up from Master's Touch, a complete outfit from The Grapevine, massage and facial at Bellus Tu Spa, a goody gift basket from Suzie B's, and a free chiropractic consultation from Majors Chiropractic in addition to many other indulgences.

J Oliver's will provide breakfast and the Cup & Saucer Tearoom will be providing lunch for the winning female on the day of the makeover. To nominate a deserving female, pick up an application form at any of the participating businesses. Completed forms must be submitted to P.O. Box 1455, Kings Mountain, NC 28086 by April 15th.

For more information, contact Laurie Mancuso at Bellus Tu Spa at (704) 734-1133 or Caroline Dover at Mountaineer Partnership, Inc. at (704) 730-0283 or email mtnpartnership@bellsouth.net



CONTRIBUTED
Eddie Parker portrays Jesus in the popular Kings Mountain passion week drama CrossWalk - The Trail of Amazing Grace, Friday and Saturday downtown. Cover photo shows Jesus appearing before Pilate.

Ultra shows off new plant

Lt. Gov. Bev Perdue toured and officiated the ribbon cutting of the newly expanded manufacturing facility today at Ultra, a leading precision metal fabrication manufacturer headquartered in Shelby.

The new 101,000 square-foot facility is located on Ultra's 110-acre Shelby campus. Ultra now has a combined total of over 365,000 square feet of production and office space, including its Kings Mountain facility. The expanded facility has also allowed the company to increase its workforce to 400, becoming one of Shelby's largest employers.

Opening its Shelby plant headquarters in 2006, Ultra specializes in everything from laser cutting to welding, utilizing the latest in innovative and cutting-edge technology. Maintaining multiple defense contracts for armor plating, over the last three years the company has experienced significant growth,

expanding its workforce from fewer than 30 in 2005 to a team of nearly 400 today.

Founded in Kings Mountain in 1989 by President Frank Stewart, Ultra has emerged as a leader in precision metal fabrication and is recognized for upholding the highest level of quality, innovation, expertise and delivery. The company has continued to grow exponentially from employing a workforce of just under 30 in 2005 to a team of nearly 400 today and tripling its sales revenues. The company also regularly contributes to organizations including the American Heart Association, United Way and American Legion Baseball and has received multiple recognitions for industry excellence.

Ultra's headquarters is located at 2501 W. Dixon Blvd., Shelby, N.C., 28150. For more information, call (704) 482-1399 or visit www.umf1.com.

CrossWalk Easter drama Friday and Saturday downtown

The 8th annual presentation of CrossWalk - The Trail of Amazing Grace, will be held Friday and Saturday nights at 6:15, 7:15 and 8:15 in downtown Kings Mountain.

Tickets are \$5 and are available at Alexander Business Park (across from the Post Office) and will also be available on site at the entrance and pre-show area on Mountain Street, just below Griffin's Drugs. Advance purchase is encouraged. Seating is limited to 250 per show and a couple of the shows are already sold out. For complete details and updated information, call Regal Ventures at 704-739-3838 or go to www.kmcrosswalk.com.

An unusual combination of several dramatic styles has earned this presentation the title of "the southeast's most unusual passion play." Following a musical welcome by local gospel group "Cross Reference," the event takes a tour group into the streets of Jerusalem 2,000 years ago to become part of the celebration,

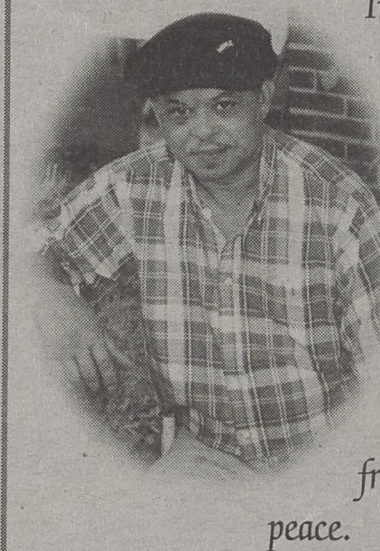
the agony, and the victory that marked what is called the "Passion Week" of Christian heritage.

Over 200 area citizens work on stage and behind the scene to produce the drama commemorating the meaning and events entwined around the first Easter.

The event has become a tourist attraction with people attending from many states. Last year over half in attendance were from out of town.

Regal Ventures Director Reg Alexander coordinates the activities of numerous churches and groups that put the event together. The "make-it-happen-team" is Alexander's term for the hard-driving individuals who handle the specifics of seven different stages each with its own sound and lighting.

"It is a humbling experience each year to see such a complex event come together through the network of talents and interests of these people," he says.



In the early morning of February 6, 2008, God delivered our loved one out of his bed of pain and suffering, and welcomed him into the gates of everlasting life "pain free" full of joy, love and peace.

Thank each of you for your many prayers and may God bless you and your families abundantly.

He will truly be missed.

-Geraldine Wray