

# GOLF

## Entries needed for April 18th Touchdown Club golf tourney

The inaugural Kings Mountain Touchdown Club Golf Tournament will be played Friday, April 18 at Woodbridge Golf Club.

Entry fee is \$50 per person and includes lunch at 11:30 a.m. The tournament will begin at 1 p.m. with a shotgun start.

The field is limited to 36, four-person teams. A Captain's Choice format will be used.

There will be prizes for closest to the pin on the par 3 holes, and longest drive for men, women and seniors (ages 60-plus). Golfers will be flighted at the end of the tournament with first place prizes in each flight.

Red tees and mulligans will be available for purchase.

Sponsorship opportunities are available for \$100 (gold sponsor), \$50 (silver sponsor)

and \$25 (bronze sponsor).

Businesses are also asked to provide items that can be used for door prizes. Call Larry Hamrick at 704-739-3611 to arrange for a club member to pick up the items.

All profits from the tournament will go toward the renovation of the weight room at Kings Mountain High School. All athletic teams and physical education classes at KMHS will have access to the new weight equipment.

Golfers and sponsors should make checks payable to Kings Mountain Touchdown Club and mail them to Larry Hamrick, P.O. Box 579, Kings Mountain, NC 28086.

For more information, contact Larry Hamrick at 704-739-3611 or warham@bellsouth.net

## Stoney Jackson golf tourney Saturday at KM Country Club

The second annual Stoney Jackson Mission Golf Tournament will be played Saturday, April 5 at Kings Mountain Country Club.

There is a 1 p.m. shotgun start.

Entry fee is \$200 per team and includes green fee, cart fee and lunch (served from 11:30-12:30). Only 100 players will be accepted so sign up early.

The tournament is a Captain's Choice format, four-person teams. Mulligans are available for \$5 (one on the front nine and one on the back nine).

Awards will be given for the

first and second place teams, longest drive, and closest to the pin on par three holes. There will also be drawings for prizes.

Hole sponsorships are available for \$100.

All proceeds will help pay for a mission church.

Make checks payable to New Life Family Worship Center and mail to Stoney Jackson, 509 Katherine Avenue, Kings Mountain, NC 28086.

For more information call Stoney Jackson at 704-739-5020, Pastor Robert Eng at 704-472-3329 or the KMCC pro shop at 704-739-5871.

## Mountaineer golfers fourth in match at Rutherfordton

Kings Mountain High's golfers finished fourth in a SWC golf match Monday at Meadowbrook in Rutherfordton.

R-S Central won with a 298, followed by Shelby 304, East Rutherford 339, KM 348, Chase 354 and Burns 370.

Mac Konitzer of Shelby was medalist with a 69.

Camden DeVane led the Mounties with an 85, followed by Cory Phillips 87, Hogan Sellers and Jared Spicer 88 each, Boone McDaniel 91 and Stuart Smith 105.

HELPING TO GIVE YOU



# The Power Of Health!

PROGRAMS TO HELP YOU BUILD A HEALTHIER LIFE  
Some programs may require Pre-Registration or Appointments (R). Some require a fee (\$).

April 2008

## Cleveland Regional Medical Center

### Prostate Cancer Survivor Support Group

April 1 - 7 p.m.  
"Treatment of Impotence"  
CRMC Center for Lifelong Learning, Grover Building  
For more information, please call 980-487-3182.

### Breastfeeding Support Group & Mom to Mom Support Group

April 2 - 10 a.m. - Noon  
Open to all breastfeeding mothers and nursing babies and expectant moms who are interested in breastfeeding.  
Women's Life Center Classroom  
For more information, please call 980-487-3887 and 980-487-3983 to register.

### WINGS Cancer Support Group

April 7 - 6 p.m.  
A support group for patients with all types of cancer.  
CRMC Blumenthal Cancer Center  
For more information, please call 980-487-3025.

### Infant and Child CPR Class

April 7 - 6 - 8 p.m.  
For parents and other infant/child caregivers.  
Women's Life Center Classroom  
Fee: \$10/person or \$15/couple  
To register, please call 980-487-3983.

### Bridges

A special educational program to aid recovery during the post-operative period after a mastectomy or lumpectomy.  
Sessions offered April 14 or 28 - 2-3 p.m.  
CRMC Blumenthal Cancer Center  
Register two weeks after mastectomy or lumpectomy by calling 980-487-3757.

### Diabetes Support Group

April 8 - 5:30 p.m.  
"Let's Make Recipes Healthier"  
Lynn Sullens, MS RD LDN - Clinical Nutrition Manager  
CRMC Auditorium  
For more information, please call 980-487-3953.

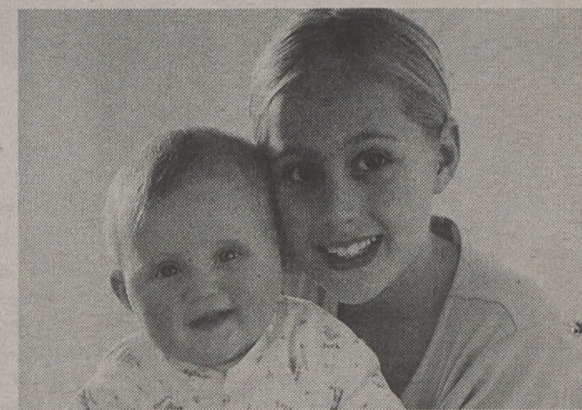


### Kangaroo Kapers

April 14 - 6 p.m.  
Provides children expecting a brother or sister a positive introduction to the hospital and to what life will be like with a new baby.  
Women's Life Center Classroom  
Pre-registration is required. Please call 980-487-3983

### OB Tour


April 20 - 2 - 4 p.m.  
A special tour for expectant parents.  
Women's Life Center Classroom  
To register, please call 980-487-3983.




### Lobby Blood Pressure Screen

April 22 - 11:30 a.m. - 2 p.m.  
CRMC Lobby



 Kings Mountain Hospital  
www.kingsmountainhospital.org



 Cleveland Regional Medical Center  
www.clevelandregional.org