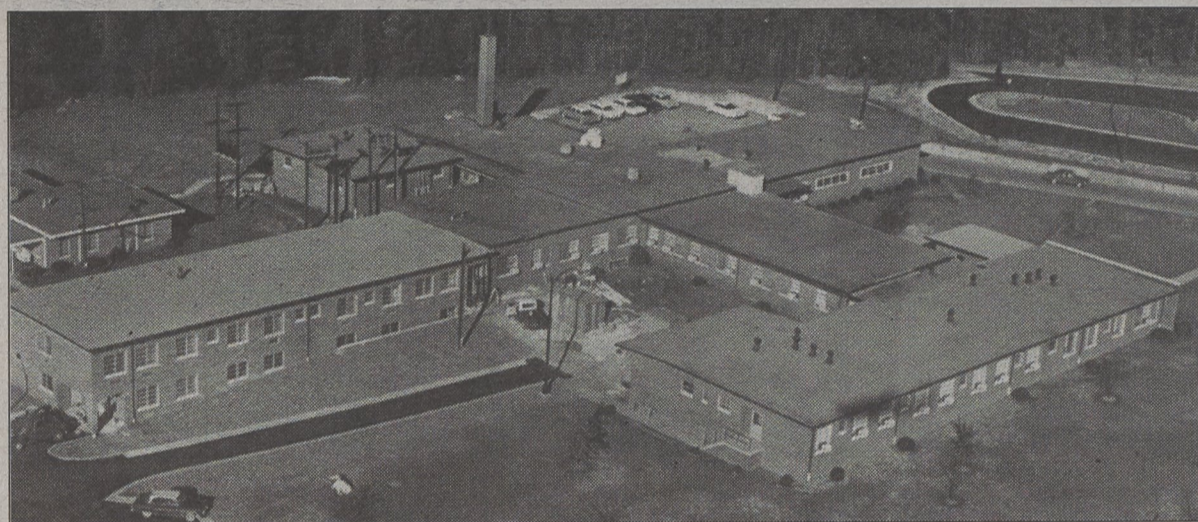




TOP: STAMEY CHERRYVILLE FUNERAL HOME



BOTTOM: KINGS MOUNTAIN HOSPITAL



PAYSEUR SERVICE STATION

1988

Mark Beach Properties

In business for 20 years!

410 York Road., Kings Mountain

704-477-6625

1988

WISE ELECTRIC CONTROL INC.

"The WISE choice for your electrical needs!"

P.O. Box 1122 • 1242 Hwy. 150 W. • Cherryville, N.C. 28021

www.wiseelectriccontrol.com

704-435-3060 • Fax 704-435-1957

Toll Free 1-888-823-3060

RUSTY WISE, *President*

1991



OPEN
Mon-Thurs
11am-9pm
Fri-Sat
11am-10pm
Sunday
12-9pm

White Pines Plaza, Cherryville

704-435.6335

1993



1113 Shelby Rd., Kings Mountain

www.premierfcu.org

704-739-9411

1994

Pace Recycling, Inc. 704.827.1985

1947 Charles Raper Jones Highway / Mt. Holly
Located Between Mount Holly & Stanley on Highway 27



OPEN TO THE PUBLIC

Mon - Fri 8:30 a.m. til 4:30 p.m.
Sat. 8:30 a.m. til 12 noon
Closed Daily from 12 til 1 for Lunch



WE BUY: Aluminum Beverage Cans • Aluminum Auto Wheels and All Other Aluminum Scrap • Copper / Brass / ACR's / Auto Radiators Insulated Copper & Aluminum Wire • Stainless Steel / Carbon Steel Carbide & Specialty Metals

Providing Meal Recycling Services for Business and Industry
Offering Pick Up Service for Qualified Loads • On Site Container Service Available
Construction and Demolition Hauling • Certified Scales with Digital Printout

1996



Family Med Pharmacy

We offer Savings, Service and Satisfaction

Allison Cobb, RPh • Carter Cobb RPh
We invite you to visit our Enlarged Pharmacy

704-263-0810 • STANLEY

Hours: 8-8 A-F, 8-7 Sat. (Behind Hardees, Across from Food Lion)
In-town Delivery Now Available