



James Tillman goes up for two of his 16 points in Monday night's state playoff win over North Henderson.

## KM beats North Henderson, Cox Mill here Wednesday

North Henderson scored the first four points of the game but it was all Kings Mountain after that as the Mountaineers rolled to an 81-50 victory in the first round of the state 3A playoffs Monday night at Donald L. Parker Gymnasium.

The victory sends the Mountaineers into a second round game Wednesday at 7 p.m. at Parker Gym against Cox Mill, an opening round winner over East Gaston.

North Henderson packed up its uniforms after finishing the season with an 11-15 record.

After the visitors early lead the Mountaineers went into a pressing defense and scored 16 points in a row, many of them following steals. Point guard Josh Sherer hit three treys as he scored 12 of his game-high 18 points over the last four minutes of the first quarter.

Leading 25-8 after the first eight minutes, Coach Grayson Pierce began getting reserves into the game as early as the second quarter. Kings Mountain rolled to a 50-24

halftime lead and a 70-32 cushion after the third period. Reserves played the entire fourth quarter.

Dunks on two consecutive trips down court by James Tillman, followed by a Chad Sanders with a steal and fast break dunk on the next possession highlighted the Mountaineers' halftime lead.

Tillman finished with 16 points, Nelson McClain 14 and Sanders 10 to give KM four double-digit scorers. Eleven Mountaineers took part in the scoring.

Tillman slammed home his third dunk on the Mountaineers' first possession of the third period. Tillman, Sanders and Sherer left the game midway of the quarter and the only other starter on the floor, McClain, left after the first two minutes of the fourth quarter.

KM - Sherer 18, McClain 14, Tillman 16, Sanders 10, Skidmore 4, Bullock 4, Helton 2, Cole 4, Funderburke 5, Johnson 2, Cash 2.

## Fast finish lifts KM over East Burke

Kings Mountain's Mountaineers outscored East Burke 23-8 over the final five minutes Thursday to beat the Cavaliers 72-53 and capture the #1 SMAC 3A seed for the 2013-14 NCHSAA basketball tournament.

Neither team could get fully untracked in the first half on a Senior Night that saw all senior players honored and Mountaineer star James Tillman given a special plaque and basketball for becoming a career 1,000-point scorer.

Senior Cameron Bullock gunned a 3-pointer on the first play of the game and the Mountaineers never trailed, but the first quarter saw only 17 points put on the board with KM on top 12-5.

After going into halftime ahead 21-10, the Mountaineers turned up the throttle in the third period and built a 47-35 lead behind quickness and scoring touch of Nelson McClain and Josh Sherer, who put up 12 and 10 points, respectively.

The Mountaineers were up 49-35 with seven minutes remaining in the game when East Burke found its range from the outside. The Cavaliers scored ten points in a row, cutting the margin to 49-45 with five minutes left.

McClain's basket, an old-fashioned three-point play by Chad Sanders, and a free throw by McClain after a



KMHS basketball coach Grayson Pierce presents senior James Tillman a certificate and basketball in recognition of Tillman scoring 1,000 points over his four-year varsity career.

technical foul on the East Burke bench pushed the lead back to double figures at 55-45.

Tillman, who finished with 13 points and 13 rebounds, had two big three-point plays down the stretch and limited the Cavaliers to one shot as the Mountaineers broke the game open.

McClain, who made some spectacular twisting moves in the lane, led the Mountaineers with 16 points and also contributed eight rebounds.

Point guard Josh Sherer did his usual superb job of setting up the offense and finished with 12 points. Chad Sanders had 12 points and six assists. Bullock scored eight points.

The Mountaineers, who

claimed third place in the SMAC behind 2A powers Shelby and East Rutherford, had to have a win over East Burke and a Shelby win over Crest to nail down the top 3A SMAC seed without a playoff.

Crest had beaten the Mountaineers 73-57 two nights earlier in Boiling Springs, giving the Chargers a shot at the top SMAC 3A seed if they could beat Shelby and East Burke upset the Mountaineers.

Kings Mountain jumped out to a 21-10 margin but the Chargers went on a 31-3 run to break the game open.

Tillman led all scorers with 18 points, but McClain with 15 was the only other Mountaineer in double figures.

## KM girls fall to Ashbrook in first round of playoffs

Kings Mountain High's girls basketball team ended its season Monday night with a 54-44 loss to Gastonia Ashbrook in the opening round of the state 3A playoffs.

The Green Wave led most of the way in avenging an early season loss to the Lady Mountaineers.

The Green Wave led 15-11 after the first period and 23-22 at halftime. Ashbrook took a 38-34 lead into the fourth quarter and KM was still in the game late but was plagued by turnovers which the Green Wave converted into points.

"We had some opportunities early in the game to get a lead and we never could take advantage," said KM Coach Mike Harris. "Ashbrook took advantage of some of our late game turnovers and closed out the game at the free throw line by hitting nine of 13 free throws."

Monique Petty ended her four-year varsity career with 13 points. Sophomore Tiffani Thompson also scored 13 and Talajah Hutchens added 10.

Carter and Pauling led the Green Wave with 14 points each.

"It's not the end of the season that I was hoping for," Harris said, "but you learn from everything and move on."

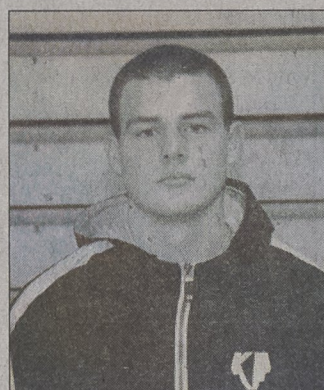
KM (44) - Thompson 13, Petty 13, Hutchens 10, Wade 4, Ellis 4.

AB (53) - Carter 14, Pauling 14, Chambers 8, Johnson 8, Woods 6, Williams 3.



Monique Petty fires from close range in last week's game with East Burke.

## Kings Mountain Mountaineers Athlete of the Week



Congratulations on winning the consolation championship at the State Tournament!

Austin Champion Wrestling Team



105 York Rd., Kings Mountain 704.734.4782

Now Serving Breakfast!! All Day... All The Time...



## When Good Days Go Bad

### WHEREVER YOU ARE

It's nice to know Carolinas HealthCare Urgent Care is nearby.

- Convenient care for bumps, bruises, burns and bellyaches.
- More than 25 locations across the region - close to home, work or school.
- The only children's urgent care locations in the region, backed by the strength and reputation of our Levine Children's Hospital.

Access All Urgent Care Wait Times: [CarolinasHealthCare.org/AccessClevelandUC](http://CarolinasHealthCare.org/AccessClevelandUC) or call 704-355-8000



Carolinas HealthCare System URGENTCARE

### LOCATIONS

Arboretum | Ballantyne | Belmont | Blakeney\* | Cabarrus Cotswold\* | Davidson | Eastland | East Lincoln | Fort Mill | Gastonia | Huntersville | Matthews | Mint Hill | MMG Uptown Express Care | Mooresville | Monroe | Morrocroft | Mountain Island Lake | Prosperity Crossing | Salisbury | Shelby | Steele Creek | Union\* | Union West  
\*Children's Urgent Care Locations