



David Bolin being greeted at home plate following a home run against Crest

Wayne Bridges, 14,
In A Picklish
Situation
Against Crest
Monday

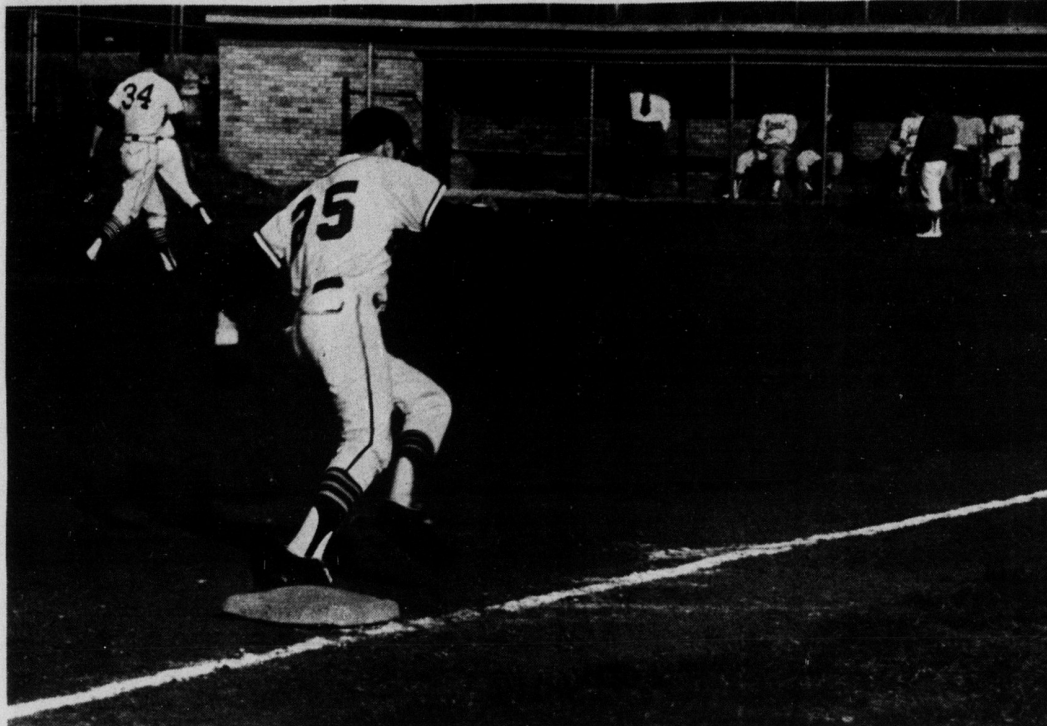


Kings Mtn. Defeats Crest 10-4

Kings Mountain defeated conference foe Crest Monday afternoon at home 10-4. The winning pitcher for Kings Mountain was Rick Hord. Hord gave up only two hits and five walks, striking out six batters.

David Bolin had a home run and one single. Grafton Withers had a triple and two singles. Keith Parker collected a double while Danny Hartsoe got a double and a single. Tim Echols slammed out two

singles as Paul Manning, Wayne Bridges, Robby Moore and Rick Hord collected singles. Runs batted in: Bolin, 4; Hartsoe, 2; Moore, 2; Parker, 1; Echols, 1.

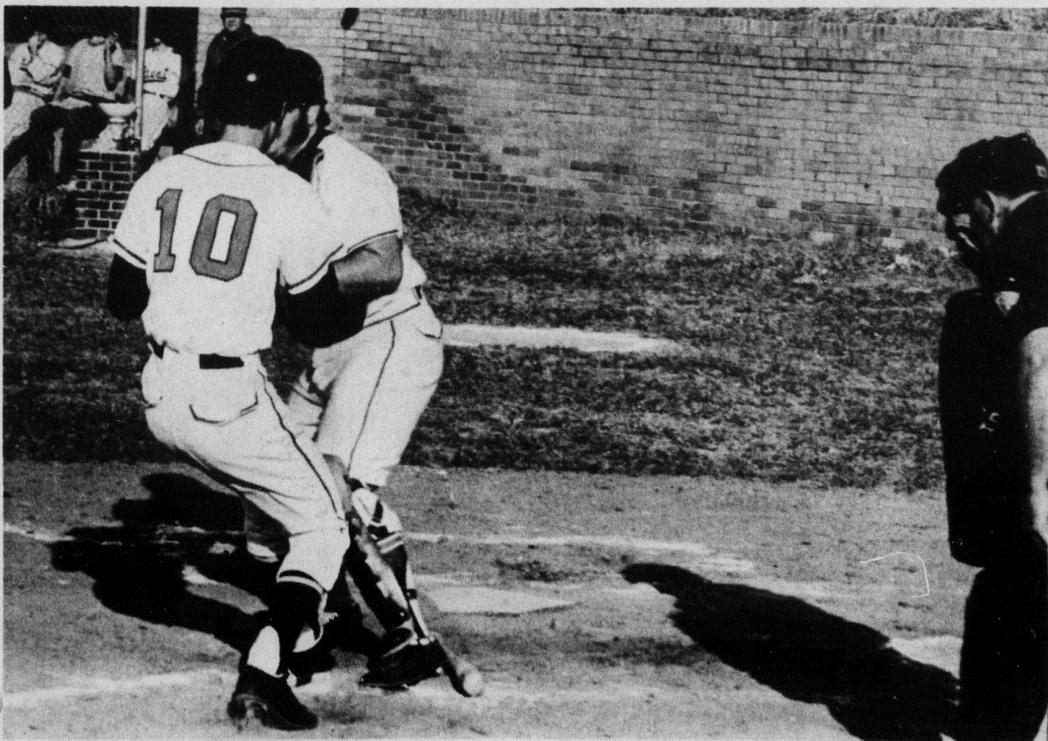


Keith Parker streaks home



Optimist Youth League 13- Winners as of Monday. Pictured on 1st row are: Timmy Hale, Mark Hullender, Scott Stackhouse; 2nd row Mike Spears, Wally Davis, Bunky Robinson, Terry Cain,

John Gamble, Mike Spears; 3rd row Jim Littlejohn, Jim Baity, Eric Hunter, Jerome Miller, Billy Gardner, Terry Carthen, Brian White. Mike Hinson was not present.



Second Baseman, Robby Moore, is tagged out at home plate by Crest Catcher

LARRY D. HAMRICK
REAL ESTATE BROKER
ALL FORMS OF INSURANCE

OFFICE: 739-3611
HOME: 739-6613

LOCATED AT:
C. E. WARLICK INS. AGENCY
110 WEST MOUNTAIN STREET
KINGS MOUNTAIN, N. C. 28086

Dine With Us
Friday and Saturday Evening
SPECIAL
9 Oz. Rib Eye Steak
With Potato, Salad, Bread & Beverage

\$3.50

ROYAL VILLA
MOTOR INN
I-85 At 161
Kings Mountain, N.C.

H.R. COX
CONFIDENTIAL
TAX SERVICE

146 West Mountain St.

Federal and State
Income Tax Returns
\$3 Up

All States Returns
Reasonable Rates For
Small Business Bookkeeping
Locally Owned and Operated

Year Round Service Downtown

739-3248

Hetty Cox - Linda Davis

Belk
Your Happy Shopping Store
205 S. Battleground Ave

puritan... forever young

\$26

"NOW IS THE TIME"
for young contemporary styling
BY PURITAN

PRETTY SUMMER LOOKS
IN 100% POLYESTER
BY FOREVER YOUNG

A garden of tulips, utterly charming and completely young and feminine. Sleeveless fitted bodice and a gentle flow to the skirt in two tones of 100% polyester.
Black, Red
Sizes: 8-18

A long glamorous strand of pearls is added to a princess line basic of 100% polyester crepe. The perfect dress for testing your accessory genius.
Black, Navy, White, Coral, Aqua, Lilac, Green
Sizes: 10-20, 12 1/4-24 1/2