

# Here's the swing....

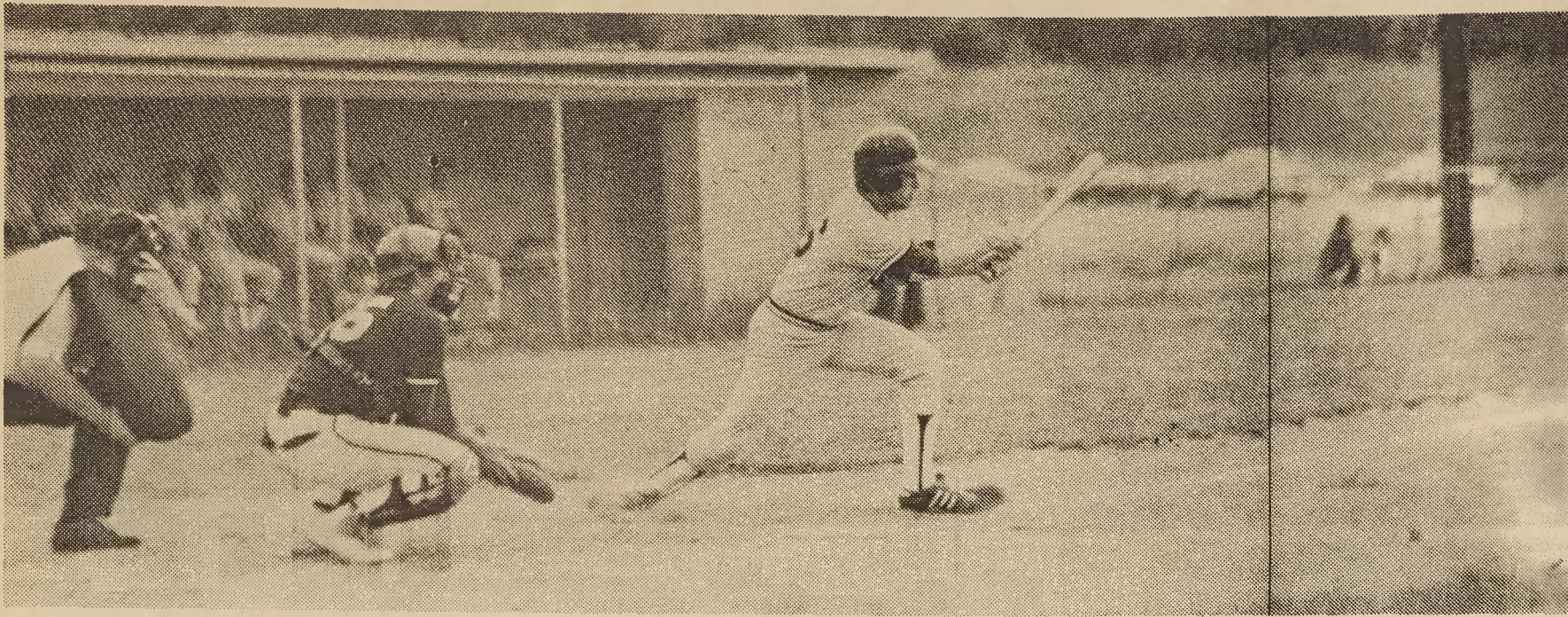


Photo By Gary Stewart

Chuck Austin hits a grounder toward third base to plate Tony Payne with the first run for the Mountaineers in last Thursday's 6-3 win over Chase at Lancaster Field. Catching for

Chase is Mike Mode and the umpire is Don Pack. The Mountaineers topped the Trojans 13-7 Tuesday to advance to the Southwestern Conference championship series against Shelby.

## Mounties Oust Trojans, Playing Lions For Title

Kings Mountain High's baseballers host Shelby Friday night at Lancaster Field

in the second game of the two teams' best-of-three series for the Southwestern Conference title.

caster and singles by Gillespie and Hartsoe.

Tony Payne's three-run inside-the-park homer highlighted a four-run uprising in the third as the Mountaineers hiked their lead to 10-1. The Mounties added their final three runs in the fifth on Hartsoe's double and singles by Monte Falls and Hal Glass.

The Mountaineers slammed out 15 hits against Chase pitchers Jody Waters and Audie Scruggs. Waters, the starter, was charged with the loss.

Hartsoe and Falls led the way in the hitting department with 3-for-4 each and Southwell, Lancaster and Johnson added two hits apiece. Everybody in the KM starting lineup obtained at least one hit except Austin, who walked three times.

If the Shelby series goes the full three games, the third and deciding contest will be played in Shelby next Monday. The winner represents the SWC in the Western North Carolina High Schools Activities Association.

This year's club was 12-3 overall heading into yesterday's game.

The series opened yesterday afternoon in Shelby but the game was still in progress at the Mirror-Herald's press-time.

Kings Mountain won the right to meet the Lions Tuesday night at Chase, defending the Trojans 13-7 to win their best-of-three semi-finals series in two straight games. Shelby defeated Cherryville, two games to one, last week to reach the finals.

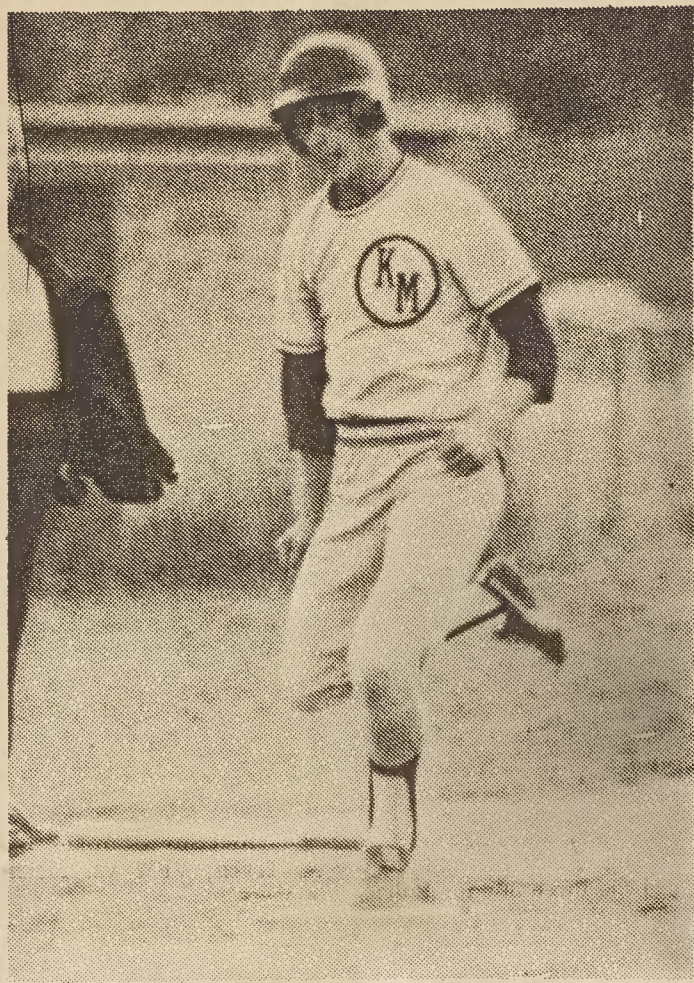
Richard Gillespie, 7-1, was scheduled to pitch Wednesday against Shelby's Ron Kloosterman, 9-1. Chuck Austin, 4-1, will probably hurl for the Mounties tonight.

David Lancaster continues to head the plate attack with a .628 average, nine homers and 28 runs batted in. Others over .300 include John Yarbro .571, Gillespie .343, Dale Hartsoe .341, Austin .333 and Steve Southwell .321.

Austin hurled Tuesday's series-clinching win at Chase, giving up six hits and fanning eight. The Mountaineers jumped off to a 6-0 lead in the first inning and that was too much for the Trojans to overcome.

Chris Johnson's two-run homer highlighted the first inning uprising and other hits in the inning included a triple by Southwell, a double by Lan-

....and the result



Tony Payne touches home plate with the first run for KMs Mountaineers in their 6-3 win over Chase Thursday at Lancaster Field. He tallied on Chuck Austin's bounce out to third base. Mounties won Tuesday night at Chase 13-7 to wrap up the series in two games.

## Big First Keys Opening Win

Kings Mountain's Mountaineers scored six runs in the first inning Thursday night at Lancaster Field and made them hold up for a 6-3 win over Chase in the opening game of their best-of-three Southwestern Conference semi-finals series.

Richard Gillespie went the distance on the mound to record his seventh win in eight decisions. He hurled a four-hitter, walked only one and struck out nine.

The Mountaineers spotted the Trojans, second-place finishers in Division Two, a 1-0

lead in the top of the first when Mike Mode was hit by a pitched ball and scored on a double by pitcher Audie Scruggs.

But the Mountaineers struck for seven singles in their half of the inning to break ahead 6-1 and Gillespie didn't allow the Trojans another tally until the last inning when they recorded two unearned runs.

Tony Payne walked to lead off the KM first, moved to third on a single by Steve Southwell and tied the score on Chuck Austin's infield out. David Lancaster then singled to score Southwell with the winning run and the Mountaineers went on to score four more runs on singles by Gillespie, Dale Hartsoe, Steve Lancaster, Monte Falls and Hal Glass.

Lancaster finished with 3-for-4 and was the only player for either team to get more than one hit.

Gillespie retired the Trojans in order in the second, third and fifth frames. Scruggs, an ambidextrous pitcher, settled down to hurl good baseball after the first inning. Scruggs pitched right-handed against KM's right-handed hitters and lefthanded against Lancaster, KM's lone southpaw swinger. Lancaster reached base all four times, three times on hits and once by an error.

### Howard Plays Here Tuesday

The Carolina Athletics of Kings Mountain will host world open softball champion Howard's Furniture of Denver, N. C. Tuesday night at 7:30 at City Stadium.

The Howard's team is paced by such stars as Don Arndt, and former major league standout Tony Cloninger.

### Clincher!

K. Mtn.	AB	R	H	RBI
Payne, cf	5	2	1	3
Southwell, 2b	5	1	2	1
Austin, p	2	1	0	0
D. Lancaster, 1b	4	1	2	2
Gillespie, ss	4	0	1	1
Baliles, ss	1	0	0	0
Hartsoe, c	4	1	3	1
Falls, rf	5	2	3	2
Johnson, lf	4	1	2	2
Glass, 3b	4	1	1	1
Totals	38	13	15	13

CHASE	AB	R	H	RBI
Mode, c	3	2	1	0
Scruggs, ss-p	4	0	1	2
Waters, p-rf	2	2	0	0
Weathers, 2b-ss	3	2	2	1
Lipscomb, cf	3	0	0	0
Hall, rf	3	0	0	0
Pruett, lf	4	0	2	3
Childers, 1b	3	0	0	0
Whisnant, 3b	2	0	0	0
Bagwell, ph	0	1	0	0
Stewart, ph	1	0	0	0
Totals	27	7	6	6

Pitcher	IP	H	R	ER	BB	SO
E-Hartsoe, Gillespie, 2	7	6	7	5	6	8
Mode, Scruggs, Waters, LOB-C 8, KM 12. 2 B-Scruggs, Southwell, D. Lancaster 2, Hartsoe, Falls, Johnson 3B-Southwell. HR-Payne, Johnson. SB-Payne, Gillespie.	22-3	10	9	6	5	
Scruggs	41-3	7	3	2	3	8

## HE CALLED AFTER SUNDOWN



Because Glen knew about Southern Bell's low rates on evening calls. That he could dial direct anywhere in the United States\* (except Alaska) without an operator's assistance after 5 p.m. on weekdays, and talk for considerably less money than on weekdays from 8 a.m. to 5 p.m. And you can do the same after sundown.

Direct-dial rates do not apply to person-to-person, coin, hotel-guest, credit card or collect calls, or to calls charged to another number. For direct-dial rates to Hawaii, check your operator. Southern Bell

WHERE IN THE WORLD BUT-

# SMITH DRUGS

Walgreen K M Plaza Shopping Center

**SIMILAC**  
Infant Formula  
Plain or With Iron  
32 Ounce Ready to Feed  
**79¢**

**PAMPERS**  
Toddler Size  
PKG. of 12  
**\$1.28**

**KLEENEX**  
TOWELS  
2 FOR **88¢**

**PAPER PLATES**  
9" White  
**79¢**

**POLAROID COLOR PACK FILM**  
Size 108  
**\$3.99**

**DELSEY**  
White-Print-Color  
**TISSUE**  
PKG. of 2  
**88¢**

### SALE ON HOUSEHOLD HELPERS!

**TY-D-BOL**  
For Toilets  
Cleans automatically when you flush  
12 Ounce  
**97¢**

**COLD POWER**  
20 Ounce  
OR  
FAB  
**53¢**

**OCTAGON**  
LIQUID Detergent  
48 Ounce  
**79¢**

**DOWNEY**  
Fabric Softener  
32 Ounce  
**79¢**

**AJAX**  
LIQUID Cleaner  
28 Ounce  
**89¢**

**Lysol**  
SPRAY  
21 Ounce  
**\$1.99**

**SCOPE** MOUTH WASH  
12 Ounce Size  
**79¢**

**Colgate** DENTAL CREAM  
7 Ounce- Family  
**75¢**

**Cotton Balls**  
Bag of 325 - Curity  
**67¢**

**Batteries 6 FOR \$1.00**  
D-Cell FLASHLIGHT

**Spray Deodorant**  
14 Ounce SECRET  
**\$1.49**