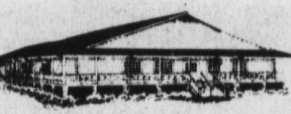


ROG & SON BOE ENGINEERS  
127 HALLADAY ST.  
LINCOLN, N.C. 28084

# Kings Mountain Herald



VOLUME 95, NUMBER 12

THURSDAY, MARCH 25, 1982

KINGS MOUNTAIN, NORTH

## Engineer: If You Cut, You Lose

By GARY STEWART  
Editor

The City of Kings Mountain's electrical consulting engineer told the Board of Commissioners Monday night that its rates are in line with other cities in the area and if it cut rates identical to Duke Power's the city would lose \$9,000 per month.

The board, after a lengthy discussion, took no action on changing rates. District Three Commissioner Corbet Nicholson made a motion to decrease rates to the "same as Duke Power" but his motion died for lack of a second.

W.H. Little Jr., engineer with Southeastern Consulting Engineers of Charlotte, appeared before the board to compare Kings Mountain's retail rates with those of Duke Power and neighboring towns.

His appearance was prompted by a report on a Charlotte television station last week which stated that Kings Mountain's electric rates are the highest in the area and that they are 13 percent higher than Shelby's.

Little, however, said that report was "in error" because the TV station (WSOC Channel 9) reported old figures from Shelby and Lincolnton and up to date figures on Kings Mountain.

Little passed out sheets to board members and visitors comparing Kings Mountain's current rates to those of Shelby, Lincolnton and Duke Power.

According to Little's figures, Kings Mountain's rates are slightly higher than the others, but he said the reason is that Kings Mountain maintains one rate while the other three electric companies have both a summer

and winter rate. Summer rates are higher.

Based on 1,000 kilowatt hours, Kings Mountain's residential rate is \$61.82 compared to \$54.18 for Shelby and \$59.83 for both Duke and Lincolnton. RW (Residential and Water Heating) rates are \$54.18 for Lincolnton, Shelby and Duke. Kings Mountain does not have a water heating rate.

Residential all-electric rates are \$54.24 for Shelby, Lin-

### COMPARISON OF ELECTRIC RATES 1000 KWH USAGE RATES

	R*	RW*	RA*
SHELBY	\$54.18	\$54.18	\$54.24
LINCOLN	\$59.83	\$54.18	\$54.24
KINGS MOUNTAIN	\$61.82*		\$55.47
DUKE	\$59.83	\$54.18	\$54.24

\*PLUS FUEL ADJUSTMENT CHARGE

colnton and Duke and \$55.47 for Kings Mountain.

Little blamed the differences in the three cities' figures on a recent Duke Power increase. In December, he said, Duke applied for a 15 percent increase and was given a 12.5 increase. Kings Mountain, on Southeastern's recommendation, approved a nine percent hike in residential rates, 12.3 on the all-electric rate and 15 percent on commercial, industrial and Housing Authority rates.

Duke, Little said, can continue to charge 15 percent until final action is taken by the Utilities Commission and the Federal Utilities Commission. Therefore, he said, if Kings Mountain reduces its rate by 2.5 percent to the 12.5 figure approved for Duke, it would have to continue to pay Duke 15 percent more until Duke's proposed increase receives final action. That, he said, would cost the city \$9,000 a month, or \$105,000 a year.

Little, in response to questions by Commissioners Norman King and Jim Childers, said Shelby and Lincolnton are losing money because they increased their electricity by only 12.5 percent and are paying Duke 15 percent.

"The Federal Agency said Duke could go up 15 percent, right?", Childers asked Little. "So Shelby is picking up the other 2.5 percent?"

"Yes," Little replied. "Shelby every month is spending money to furnish power at a reduced rate?", Childers added.

"It would cost Kings Mountain \$105,000 a year to match their rates," Little replied.

"Shelby and Lincolnton are losing money?", Childers added.

"Yes," Little said.

Bob Gidney, Utilities Director

Turn To Page 2-A

### King: City Needs To Have More Input

By GARY STEWART  
Editor

City Commissioner Norman King charged Monday night that City Clerk Joe McDaniel and many department heads are in the dark about too many things that are going on, and blamed Southeastern Consulting Engineers for not giving city officials any chance for input into decisions made for the town.

Speaking to W.H. Little, Engineer for Southeastern, dur-

ing the board of commissioners meeting, King said McDaniel did not know about the latest increase in electrical rates until the action was approved by the Board of Commissioners on December 14.

"The Mayor said he didn't know it until 30 minutes before the meeting," King told Little. "Do you not think someone in the city should have some

Turn To Page 4-A



NORMAN KING

### Nicholson: KM Too Fat In Some Areas

By GARY STEWART  
Editor

City Commissioner Corbet Nicholson, who proposed Monday night that the city cut its electrical rates to the same amount as Duke Power's, said following the meeting that there is too much fat in many city departments.

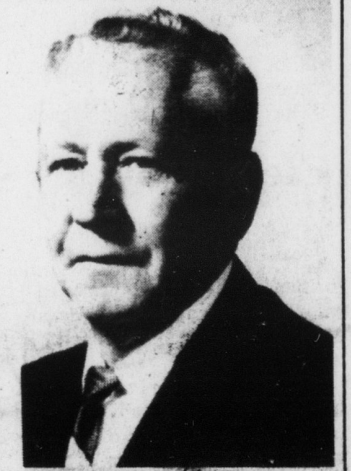
Nicholson's motion died for lack of a second.

"I felt like we could afford to cut the electrical rates for two or

three months until we see what Duke Power does," he said. "I feel like we have some other areas we can cut expenses to offset it."

W.H. Little Jr. of Southeastern Consulting Engineers said if the city cut its retail rates to the same as Duke, it would lose \$9,000 per month until the State Utilities Commission makes a final decision on

Turn To Page 4-A



CORBET NICHOLSON

### THE NEWS IN BRIEF

#### Screening Clinic Set

Kings Mountain Lions Club will sponsor a glaucoma and blood pressure screening clinic Mon., Mar. 29 from 9 a.m. until 3 p.m. at the Kings Mountain National Guard Armory.

The clinics will be conducted by the staff of the Cleveland County Health Department.

In North Carolina, glaucoma is the third leading cause of blindness, behind cataracts and retina disease. It is estimated that two percent of the general population over 40 years of age has glaucoma or 675 people in Cleveland County. Everyone over the age of 35 should be tested for it. Glaucoma occurs gradually and painlessly. Its symptoms such as blurred vision or loss of side vision are not always noticed. Glaucoma can usually be controlled if it is detected early.

High blood pressure, or hypertension, is another disease and is often called the "silent killer." The disease can be causing damage to the body even though one is feeling fine. If hypertension is left untreated, it can lead to a stroke, heart or kidney failure.

#### RUMMAGE SALE

The Kings Mountain Fire Department will sponsor a rummage sale on March 27 in the field across from the fire department. In case of rain, it will be held inside the fire department. Clothes, furniture, cakes and pies will be sold. All proceeds will go toward the construction of a roof on the fire museum.

Anyone with items to donate may call the fire department at 739-2552. Items may be brought to the fire station or firemen will pick them up.

#### HOTDOG SALE

Chestnut Ridge Volunteer Fire Department will have a grilled hamburger and hot dog sale Saturday, March 27, from 11 a.m. until 6 p.m. For carry out orders, call 739-1416.



MARTY DOVER

#### Fund Drive Is Underway

Westover Baptist Church of Kings Mountain is beginning a fund drive for a 12-year-old Shelby boy who was injured when struck by a car last week on Highway 150 south of Shelby.

Marty Dover, a seventh grader at Crest Junior High, remains in a coma in the intensive care unit of a Charlotte hospital. He suffered a broken leg and hip and other injuries.

The family has no insurance and the boy's father has been unable to work since the accident because of the need to be by his son's side.

Anyone wishing to make a donation may send their check to the Marty Dover Fund, in care of Westover Baptist Church, 1370 Westover Drive, Kings Mountain, N.C. 28086, or call Rev. Roger Webb at 739-2187.

#### TALENT SHOW

The West School Talent Show will be held Thurs., Mar. 25 at 7 p.m. at Barnes Auditorium. Steve Baker will be the Master of Ceremonies and special entertainment will be presented by Kate's Skating Rink of Gastonia. Admission is one dollar for adults and 50 cents for students.

#### Bloodmobile Visit Slated

The Cleveland County Volunteer Fire Department and the Fraternal Order of Police will sponsor a bloodmobile visit Thurs., Mar. 25 from 2:30 until 8 p.m. at Cleveland Volunteer Fire Department in Shelby. County office employees will also participate. The goal is 75 pints.

Burns and Crest high schools surpassed their goals in recent bloodmobile visits.

On Wed., Mar. 10, Burns had the second most successful bloodmobile this year. The school had a goal of 175 pints and 263 productive pints were given.

On Wed., Mar. 17, Crest produced 194 pints. The goal was 185.

#### Instructors Are Certified

The Cleveland County Chapter of the American Red Cross certified eight new CPR instructors during a recent class.

New instructors include Monica Beheler, George Rogers, Ken Wright, Ellen Fitzgerald, Denise Fite, Dr. Doug Stover, Ada Scism and Susan McBryer.

The Red Cross is in the process of preparing a safety calendar to teach multi media first aid, CPR and water safety. Anyone interesting in taking any of the courses may call the Red Cross office.

#### COMMUNITY WATCH

Sgt. Shirley Pruitt of the Cleveland County Sheriff's Department will present a program on Community Watch Thurs., Apr. 1 at the regular meeting of the American Legion Post 155 Women's Auxiliary. The meeting will begin at 7:30 p.m. at the legion building. The public is invited to attend. Myrtle Christenson is unit president and Arlene Barrett is program chairman.

### Blanton Killed In Wreck

Marvin Thomas Blanton, 47, of York, S.C., was killed early Thursday morning in a two-car collision just inside the South Carolina line on Highway 161.

According to Trooper Danny Horlacher of the South Carolina Highway Patrol, the car which Turner was driving ran off the right shoulder of the road and skidded into the path of a van driven by Gerald Austin Jones, 49, of Shelby.

The wreck occurred around

6:20 a.m. about seven miles south of Kings Mountain.

Two passengers in the Jones vehicle were taken to Kings Mountain Hospital by the Clover Rescue Squad. They were identified as Tommy Barnett, 39, of Church Street, Kings Mountain, and Donna Hunt, 25, of Route 6, Kings Mountain.

Blanton was employed by Freightliner Corporation in Gastonia.

Funeral services were conducted Saturday at 3 p.m. at Eastside Baptist Church in Kings Mountain by the Rev. Buddy Williams and the Rev. M.P. Hampton. Burial was in Mountain Rest Cemetery.

He is survived by his parents, the Rev. J.W. and Omie Williams Blanton of Kings Mountain; his wife, Grace Dellinger Blanton; a son, Marshall Thomas Blanton of Columbia,

(Turn To Page 2-A)

#### Kindergarten Registering Is Underway

Kings Mountain District Schools System is in the process of registering kindergarten and first grade students for the 1982-83 school year.

All children who will be five years old on or before October 15, 1982, will be eligible to enter kindergarten. All children who will be six years old on or before October 15, 1982, are eligible to enter kindergarten or first grade.

Screening sessions will be held at the five Kings Mountain elementary schools on an appointment basis. Before May 5, parents need to contact the office of the school their child will attend. If the parents are not sure which school their child will attend, they may call the Central Office at 739-4580 and get the information. The school offices are open from 8 a.m. until 4 p.m. each weekday. Telephone numbers are Bethware, 739-6453; East, 739-4426; Grover, 937-7671; North, 739-2346; and West, 739-5276.

Parents are expected to attend a pre-school screening with their child in order to participate in the orientation and a private parent-social worker conference.

In addition to the completed registration form, the parents will need to bring a copy of the child's legal birth certificate (not the hospital record), the child's shot record, and a copy of the physical examination by the family doctor or Health Department.



GOING UNDER BUCK? - Could it be that the price of gasoline will go under a dollar a gallon again? The price has declined steadily in Kings Mountain over the past several weeks and last week dipped to an almost unheard-of low of \$105.9 at several stations on Highway 74. It was over two years ago when the price of gas topped the dollar mark.