

Smithfield Hosts 18th Annual Ham And Egg Show

Johnston County Event Is Underway; Expect Many

SMITHFIELD — Eighteen years ago when L. R. (Ham) Johnson staged the first Johnston County Ham and Egg Show there were many people who wanted to know what was wrong with him. Thursday afternoon when C. E. "Snookie" Stephenson, the pre-natal auctioneer says the "show is on the road" the question will be answered. The finest array of hams and the choicest dozens of eggs from Johnston County farms will go under the hammer.

The show has attracted atten-

tion throughout the world and the sale has boosted the economy of this farm county to a great degree. There was a time when cotton was king in this section, but boll weevil taught the sponsors of farm industry that he could be the boss. Tobacco took over and the average farmer (mostly tenant) worked long hours and ran the risk of having wind and hale send his labors down the drain.

"Ham" Johnson came up with the idea that hogs could be a profitable product and he set out to

tell the farmer how he could raise hogs that would turn out top hams. He told them that they had to be vaccinated for the common diseases that had ravaged many hog lots. He also told them how they could be fed to get the best benefits.

It was not long before the project pointed toward the barn yard and it was decided that the hen was a productive fowl and ways and means could be brought about, by proper care and feeding, that would enable her to lay a bigger and better egg. The Johnston County farmer was off to new sights. Johnson saw his project grow and when he departed this elime, for another step in agricultural work, he tossed the baton to H. F. Palmer, who has proven a worthy successor. The shows have grown from year to year and the 1965 event is expected to be the biggest ever.

It is true that there will be only two days of the show this year, but the quality of the ham and eggs to be displayed, and sold, is expected to be better. The hams have been properly processed and the eggs well candled. These products were moved in the National Guard Armory Wednesday morning and the judges went to work. Only experts are chosen for this unwellcome job and when they have put their approval on the farm wares they are accepted by any authority.

Both sexes are permitted to enter exhibits. Four-Hers, boys and girls have exhibited their wares and are known to have taken the coveted prizes. Johnnie Williams, Clayton, Rt. 1, exhibited the Grand Champion Ham last year and it was sold to the Jordan Motor Co. Smithfield, Rt. 3, showed off the Grand Champion Eggs, which brought \$25.00 from Stencil Oil and Tire Company. Eggs that sell for more than \$2.00 a piece must be some eggs.

The show is sponsored by the Smithfield Chamber of Commerce and the Agricultural Extension Service of North Carolina. The show has not only spurred the Johnston County farmer on, in raising better hogs and chickens, but the program of the extension department has opened his eyes to many other farm features that are paying off. The cattle industry has moved a long way from the old "Stock Law Fence" and now farmers are realizing great yields from this industry.

Mrs. Lucy O. Toole, Home Agent, has projected a new image in the home life of the farmer and beautiful homes, with modern conveniences, have sprung up throughout the county. The family no longer has to be "carried" by the landowner from one harvest to another.

but if it is industrious and thrifty the entire family can take part in projects that will give subsistence throughout the year.

The show will get underway proper Wednesday night, when the banquet will be held in the National Guard Armory. Diners will sit around the festal board and partake of the delicacies that only can be found at the annual banquet. Cleon Harrington, chairman, Ham and Egg Board of Directors will preside. The Rev. C. L. Manning will ask the blessing of the Almighty upon the food that will be consumed.

Bill Myatt, who runs the Chamber of Commerce, will introduce the guests. The town of Smithfield, through the Mayor, Hugh Talton, will tell how happy it is to have the guests and the farmers to show such interest in the town. The Chamber of Commerce will exhibit its president, C. Douglas Little, Jr., who is expected to tell what the town offer and what one can do if he will join the forces and help

make Smithfield better.

E. S. Simpson, county education head, will tell of the affect that the farm projects of the county have on the school system. C. W. Tarlton is slated to introduce the principal speaker, Dr. T. W. Blacklock, Assistant Director Extension Work and 4-H Club Work. Trophies will be presented by George Mast, Mrs. Toole will pin the bouquets. "Ham" Johnson will be back to tell the diners what the "Future Horizons" are in the agricultural work of the state.

The sale will get underway at 2 p.m. Thursday. Those who attend will have an opportunity to sample the hams, due to the fact that sandwiches will be given those whose blood pressure will permit them to partake. The Pepsi Cola Bottling Company of Selma has seen to it that one can drench the sandwich with the "Come Alive" beverage.

The next meeting will be held on April 8, at the home of Mrs. Dunbar, 112 Manly street.

Baptist Ministers Group Supports Fund For Malcolm X's Young Kids

CHICAGO (NPD)—The Baptist Ministers Conference of Chicago and Vicinity, headed by the Rev. Clay Evans, has thrown its support behind the efforts of a Chicago committee to form an "educational fund" for the children of Malcolm (Shabazz) X, the assassinated Muslim and Black Nationalist leader.

The committee sponsored a memorial service in honor of Malcolm X at the Tabernacle Baptist Church last Sunday, where actor-playwright Ossie Davis delivered the main address.

Rev. Evans, pastor of Fellowship Baptist Church noted that at the time of Malcolm X's assassination, his family was "virtually penniless." It would therefore be "an

unGodly shame," the minister added, "if we were not to rally to support our own heroes when even the widow of the accused assassin of our beloved ex-President Kennedy received over \$800,000 at the time of her husband's death."

Gains Of Roy Wilkins

NEW YORK (NPD)—The NAACP is citing a number of major gains in the civil rights fight during the 10-year term (ending April 11) of Roy Wilkins as executive secretary and finally executive director of the organization. The NAACP was previously led for 24 years by the late Walter White.

Cited were these gains: An increase in membership from 240,000 in 1954, to 455,150 at the

end of 1964; a boost in general fund income from \$466,065.48 in 1954 to \$1,116,565.68 in 1964; and an increase in the circulation of the organization's official new organ, The Crisis, from 36,000 to 112,000.

Wilkins was elected executive secretary seven months after the U. S. Supreme court handed down its historic decision striking down segregation in public schools.

We Salute

Loretta Hill

Rt. 1, Clayton

Your Herd Can Win Honors If You Feed Them FCX Products

Be A Champion With Our Products



QUALITY STANDS OUT EVERYTIME...

A SALUTE TO THE HAM AND

EGG SHOW FROM FCX

For Quality In Farm

Supplies . . . Visit Your



JOHNSTON FCX SERVICE

D. V. BARBOUR, Mgr.
SMITHFIELD, N. C.

A Salute

The CAROLINIAN, in its public service to its community, along with the Johnston County merchants listed herein, is happy to salute the 18th annual Johnston County Ham & Egg Show. The event is a credit to the ingenuity of the sponsors, the stability of the participants and a credit to Johnston County.

The paper has been associated with the show for a number of years and looks forward to promoting it every year. The merchants, who take advertising space, are also happy to greet the persons who make the show possible and those who take part. This is evidenced by the fact that they have taken space to not only sell their wares, but to say welcome. These merchants show, by this gesture, that they appreciate what the show means to them and they also appreciate the business that they enjoy from the people of Johnston County.

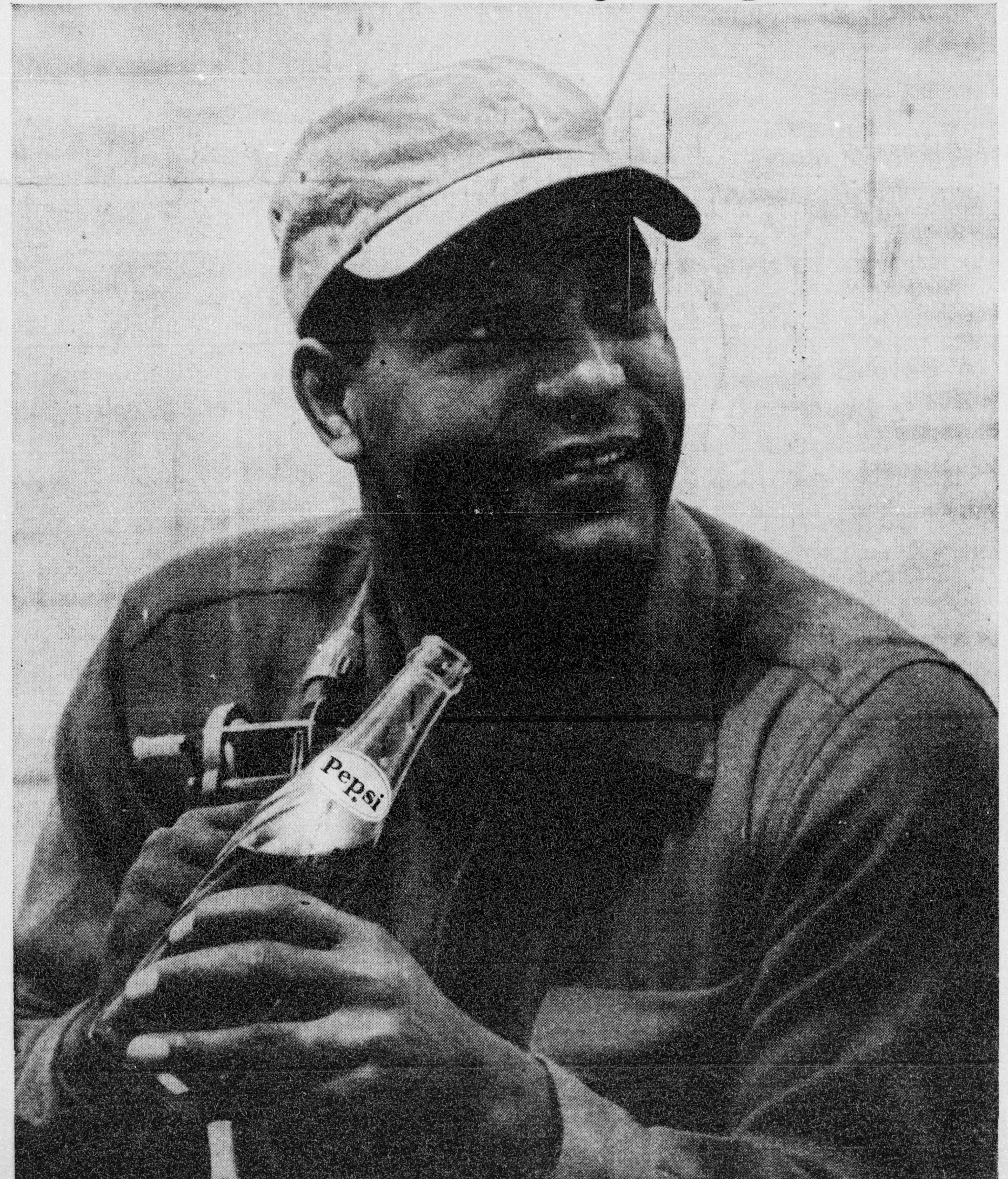
We hope those of you who have need of their wares will visit them and prove to them that you represent an integral part of the economy of Johnston County and that you will spend your money where it will buy the most and above all with people who exhibit a spirit of fair play, courtesy and appreciation.

Pepsi-Cola Bottling Co. Of Selma

Welcomes You To The Ham & Eggs Show

National Guard Armory, Smithfield, April 7-8

now it's Pepsi for those who think young



More people are taking to the outdoor life . . . and taking Pepsi along! Light, bracing Pepsi matches your modern activities—the think-young life! Pepsi's sparkling-clean taste is never too sugary or sweet. And nothing drenches your thirst like a cold, inviting Pepsi. Think young—say "Pepsi, please!"



Welcome Johnston County Ham & Egg Show!

from

The Bank That Puts The People First



MEMBER FEDERAL DEPOSIT INSURANCE CORPORATION