

St. Aug. Hosting Presidents Of All Episcopal Colleges In U. S.

Raleigh Hosts March 3-5 Confab For First Time

Presidents of all Episcopal colleges in America will meet, for the first time in Raleigh, on March 3-5 at St. Augustine's College. Heads of the eight undergraduate institutions affiliated with the Episcopal Church will gather in a series of planning sessions with approximately forty key members of their respective staffs for the discussions of means of achieving mutual benefit.

The institutions and their presidents are the Rev. Reamer Kline, Bard College, Annandale, New York; the Rev. Louis Hirshson, Hobart in Geneva, N. Y. Dr. F. Edward Lund, Kenyon in Gambier, Ohio, Dr. Earl H. McClenney, St. Paul's Lawrenceville, Va.; Dr. F. Joseph Mullin, Shimer in Mt. Carroll, Illinois; Dr. Albert C. Jacobs, Trinity in Hartford, Conn.; and the University of the South at Sewanee, Tenn.; Dr. Edward McCrady, president. Host college is St. Augustine's in Raleigh, founded in 1867 by the Episcopal Freedmen's Commission National Director, the Rev. J. Brinton Smith, and North Carolina Bishop Thomas Atkinson.

The eight college group began the present cooperative association in 1962 and received a charter in 1963. The following year the new charitable corporation, known now as the Fund for Episcopal Colleges, received a highly prized endorsement from the Episcopal General Convention and since that time has begun systematic communication with 7,000 parishes and 10,000 Episcopal clergy in the United States.

The group has two primary objectives at this time, according to the chairman of the board, Dr. Kline. It will seek budgeted funds from some 90 percent of Episcopal parishes-- those not presently supporting any college -- and will seek individual benefactions from Episcopalian at large, 99 percent of whom are not at present contributing to any Episcopal College. The other general area of effort will be to devise means by which mutually beneficial interchanges of (a) ideas, (b) professors of lecturers, and (c) students can take place among the member institutions.

The eight colleges are all that remain of some sixty which have been connected with or supported by the Episcopal Church since the first Anglican effort at college building ended with a massacre by Indians in Virginia in 1622, four-

teen years before Harvard was started. The oldest survival of early Anglican efforts is William and Mary, started in 1692, now operated by the State of Virginia and the second oldest college in the country, Yale being third.

The present Episcopal colleges enroll approximately 6,000 students and employ some 500 faculty, over half of whom are Ph. D's. They own about \$65 million invested endowment, nearly half of it held by Trinity in Hartford. Six of the Colleges are over a hundred years old with St. Augustine's in its ninety-ninth year and St. Paul's in its seventy-eighth. Together the colleges award over a million dollars per year in scholarship aid, not including substantial student loans.

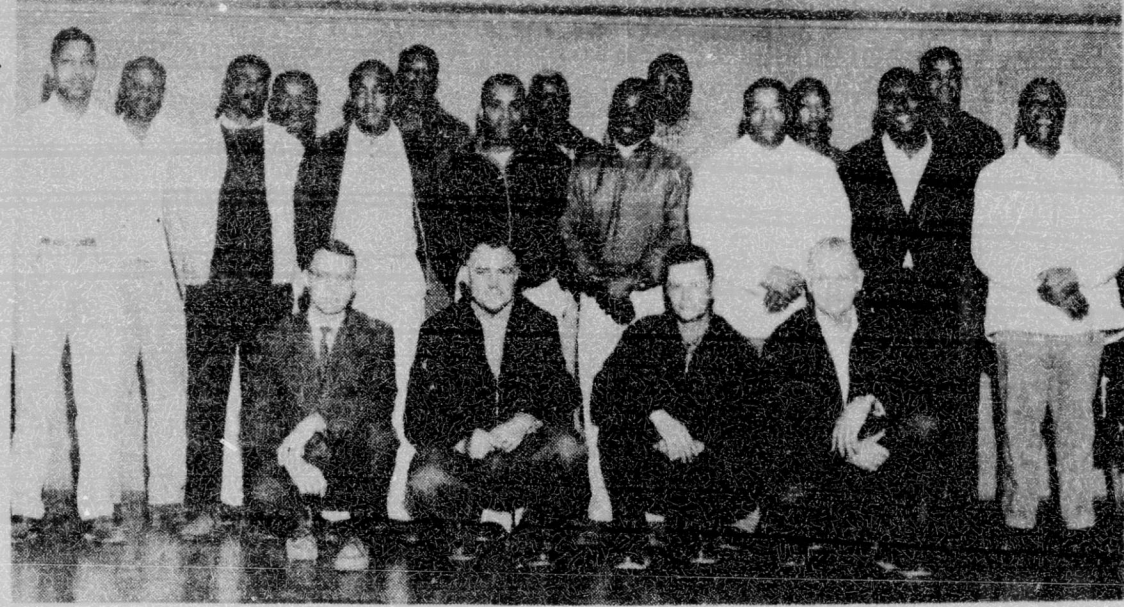
The schedule of events for the three days will begin Thursday March 3, at 3 p. m. with a meeting of the Commission on Development in the Emery Health and Fine Arts Center. The Commission of Public Relations will meet Thursday evening at 8 p. m. On Friday March 4, there will be a joint meeting of the Development and Public Relations Commissions at 9:30 p. m. in the Emery Health and Fine Arts Center. Lunch at 12:30 p. m. At 1:30 p. m. a Walk-and-Ride Tour of the Campus, Library and College Chapel. Concurrent meetings of the Presidents, Development - Public Relations Staffs, Deans and Chaplains will be held Friday March 4 at 3 p. m. At 6:30 p. m. Friday evening a Reception will be held at President Boyer's Home.

Dr. M. Howard Bryant, Regional Representative, Bureau of Higher Education, will be the Dinner speaker Friday evening at 7:30 p. m. in the Cheshtre Lounge. Dr. Bryant's topic will be "Federal Aid for Small Colleges." At 7:45 Saturday morning March 5 Corporate Communion will be celebrated in the St. Augustine's College Chapel. Plenary Session will be held in the Penick Hall of Science Lecture Room at 9 a. m. The meeting will be adjourned after lunch Saturday.

Special guest observers will be the Rev. Dr. Diasuke Kitagawa, Executive Secretary, Division of Domestic Missions; Mr. Marvin C. Josephson, American Church Institute; Jones Shannon of Church Society for College Work and Peter Day, Executive Officer in charge of Ecumenical Affairs, Executive Council of the Episcopal Church.



PEACE CORPS REPRESENTATIVE AT ST. AUG. - Robert T. Freeman, Associate Director of Management for the Peace Corps (extreme right) was at St. Augustine's College recently to discuss employment opportunities with interested students. Shown with Mr. Freeman are James Perry, front row, left, and Miss Alma Thomas. Back row - Cecil Alston, John Larkins, Erick Maye and Nathaniel Perkins.



PROMOTED AT UNC, CHAPEL HILL - New area foremen and their supervisors at the University of North Carolina, Chapel Hill, are shown. Front row (left to right), supervisors, David Bell, Roy Olive, Lonnie Blue, Paul Sturdivant. Second row, James Richardson, Rufus Burnette, Rufus Minor, Bobby Holt, Detroy Purefoy, David L. McCauley, James Paul Thompson, Charles Watson. Back row, John L. Webb, Josh Holloman, Jr., John H. Thompson, James Spinks, Clyde Whitted, Julius E. Toomer, and James Long. Not pictured is Vincent Lee. (See story).

Rocky Mt. Jabberwock Set Friday

BY J. B. HARRIS
ROCKY MOUNT - Final arrangements have been completed for the presentation of the 12th annual "Jabberwock," a fund-raising entertainment program which has been presented for twelve years to raise scholarship funds for deserving high school girls.

The "Jabberwock" is a program of mirth with merit, unique with the Rocky Mount Alumnae Chapter of Delta Sigma

Theta Sorority. Over the years it has proved a popular attraction of the Upper Coastal Plain section of Eastern Tarheelia.

The local Delta Sigmas have given more than nine thousand dollars (\$9,000) in scholarships during the past 15 years.

Delta (Mrs.) Jessie Hagen Pash announced that a bevy of lovely dressed lassies have enlisted in the keen competition for the honoring of being "Queen of the Jabberwock." The excitement will come to a climax at Pope Elementary School Friday evening, March 4 when the winner will be announced.

Entries for queen's honors have come from the following area schools: Claudette Alston, Brenda Armstrong, Audrey Jenkins, Carolyn McCoy and Renee Williams, all students of Washington High School, Rocky Mount; Sandra Gwynn, Rocky Mount Senior High; Carolyn Bullock, Swift Creek High, Whitaker; Bettie Faison, Fred Douglas High, Elm City; Carolyn Hill, Phillips High, Battsboro; and Sally Richardson, Nash Central High, Nashville, N. C.

Mrs. Mable Williams is chairman of the 1966 "Jabberwock" committee. Miss Jessie Jones is president of the Delta Sigmas.

The 1965 Alpha Kappa Alpha Debutantes held their first meeting of the year Feb. 27, at the home of their president, Carnetta Blakely, of 110 Kitt Place, Raleigh. Many interesting activities were planned for the next four months. There were big plans made also for the prospective Debutantes by the big sisters, the 1965 Debutantes. This group of charming girls believe that their activities and their ideas will prove to be very interesting to all the 1966 Debutantes and our friends and patrons.

The president made her first committee appointments. Sallie Sparks was appointed chairman of the publicity committee. The newly elected officers of 1965 Debutantes are Carnetta Blakely, president; Barbara Thorpe, vice-president; Marguerite Davis, corresponding secretary; and Martha Peebles, treasurer.

Among the members present were: Gloria Hodge, Phyllis Latta, Dorothy Battle, Sallie Sparks, Lucy Pollard, Glenda Hood, Stella Carr, Brenda Morgan, and Patricia Staton, also Madames Susan Malone and Odesa Hicks, Bastiuns and Executive secretary respectively of Alpha Theta Omega.

Our plans for the year for the members include: recognition of birthdays, special dates, congratulations for outstanding achievements in various cultural programs and a recognition social for the 1966 Debutantes. We remembered Debutantes Carnetta Blakely, Dorothy Battle and Anges Sanders for their birthdays in February by singing birthday songs. -Sallie Sparks is reporter.

1965 AKA Debutantes Make Plans

The 1965 Alpha Kappa Alpha Debutantes held their first meeting of the year Feb. 27, at the home of their president, Carnetta Blakely, of 110 Kitt Place, Raleigh. Many interesting activities were planned for the next four months. There were big plans made also for the prospective Debutantes by the big sisters, the 1965 Debutantes. This group of charming girls believe that their activities and their ideas will prove to be very interesting to all the 1966 Debutantes and our friends and patrons.

The president made her first committee appointments. Sallie Sparks was appointed chairman of the publicity committee. The newly elected officers of 1965 Debutantes are Carnetta Blakely, president; Barbara Thorpe, vice-president; Marguerite Davis, corresponding secretary; and Martha Peebles, treasurer.

Among the members present were: Gloria Hodge, Phyllis Latta, Dorothy Battle, Sallie Sparks, Lucy Pollard, Glenda Hood, Stella Carr, Brenda Morgan, and Patricia Staton, also Madames Susan Malone and Odesa Hicks, Bastiuns and Executive secretary respectively of Alpha Theta Omega.

Our plans for the year for the members include: recognition of birthdays, special dates, congratulations for outstanding achievements in various cultural programs and a recognition social for the 1966 Debutantes. We remembered Debutantes Carnetta Blakely, Dorothy Battle and Anges Sanders for their birthdays in February by singing birthday songs. -Sallie Sparks is reporter.

Our plans for the year for the members include: recognition of birthdays, special dates, congratulations for outstanding achievements in various cultural programs and a recognition social for the 1966 Debutantes. We remembered Debutantes Carnetta Blakely, Dorothy Battle and Anges Sanders for their birthdays in February by singing birthday songs. -Sallie Sparks is reporter.

Our plans for the year for the members include: recognition of birthdays, special dates, congratulations for outstanding achievements in various cultural programs and a recognition social for the 1966 Debutantes. We remembered Debutantes Carnetta Blakely, Dorothy Battle and Anges Sanders for their birthdays in February by singing birthday songs. -Sallie Sparks is reporter.

Did You Say STEAKS!

We Specialize In-Em

- BREAKFAST
- LUNCH
- DINNER
- CHICKEN - BAR-B-QUE SEAFOOD

Anything You Want!

PEEBLES
Charcoal Flame Restaurant

309 S. Wilmington Street

CALL 832-0724
For Advanced Service!
RALEIGH, N. C.

AMBULANCE SERVICE

Oxygen Equipment, First Aid Service.

PROFESSIONAL ATTENDANTS

DIAL 828-0737

Let Our Experts Keep Your Car in Top Shape!

Esso

- TIRES
- BATTERIES
- AUTO ACCESSORIES
- WASHING
- LUBRICATION

TIME TO ADD...
ANTI-FREEZE

Credit Cards Honored

DUNN'S ESSO
SERVICENTER

See Us For Complete Car Care!

DIAL 832-9496 502 S. BLOODWORTH ST.

★ LOW PRICES EVERYDAY! ★

NO LIMIT

- WHITE POTATOES 10-lbs. 49c
- GOOD BANANAS lb. 10c
- FAT BACK lb. 25c
- RIB STEW BEEF lb. 39c
- FRESH GROUND BEEF lb. 45c
- GOOD WIENERS or BOLOGNA lb. 45c
- LEAN PORK STEAK lb. 69c
- BEEF or PORK LIVER lb. 49c
- GREER NO. 2 1/2 CAN PEACHES 2 for 49c
- WHITE LEAF PURE LARD 4-lbs. 89c
- LUZIANNE RT COFFEE lb. 69c
- PURE PORK SAUSAGE lb. 55c

Open Friday Night until 9!

Horton's Cash Store

1415-17 S. SAUNDERS ST. 833-28511 RALEIGH, N. C.

ADEAL HOME IMPROVEMENT CO.
For The Finest In HOME REPAIRS
Inside or Out from Cellar to Roof

- Roofing
- Siding
- Painting
- Remodeling
- Carpenter Work
- Garages
- Additions
- Cementing
- Bathrooms
- Cellars Dug
- Rebuilding
- Club Rooms
- Patios
- New Kitchens
- Storm Windows and Doors

24-HOUR ANSWERING SERVICE
2720 S. WILMINGTON ST. F. O. Box 10767

FOR FREE ESTIMATE CALL
833-6915
If No Answer 832-1797 or 833-3496

Handsome 4-pc. Bedroom finished in Gleaming

DANISH \$88 Takes it All! Easy Terms!
WALNUT 88

A terrific special purchase from this manufacturer makes it possible to bring you this complete FOUR piece Danish suite including the big double dresser, stylish vertical mirror, bookcase-storage bed and 4 drawer chest ALL at an unbeatable low price!

Buy On CARTER'S Easy Pay Plan!

Carter's Inc.
DEPENDABLE MERCHANDISE

YOUR FRIENDLY CREDIT FURNITURE STORE

Save 25% On Any CHENILLE BED SPREAD or BLANKET Purchased This Week!

Phone TE 2-4163 Open Fridays 19 E. Martin St.
Phone T2 2-7792 'til 9 12 E. Martin St.

"SUPER-RIGHT" HEAVY CORN-FED BEEF SALE

NOW IN PROGRESS - SAVE CASH!

"Super-Right" Quality Heavy Corn-Fed Beef

STEAKS

Porterhouse or T-BONE **99c** Lb.

A&P

"SUPER-RIGHT" HEAVY CORN-FED BEEF SIRLOIN **93c** Lb.

"SUPER-RIGHT" HEAVY CORN-FED BEEF Chuck Steaks **55c** Lb.

"SUPER-RIGHT" HEAVY CORN-FED BEEF BONELESS RIB **99c** Lb.

"SUPER-RIGHT" HEAVY CORN-FED BEEF BONELESS ROUND STEAKS Top Round **89c** Bottom Round **83c** Lb.

"SUPER-RIGHT" QUALITY HEAVY CORN-FED BEEF

ROASTS

"SUPER-RIGHT" HEAVY CORN-FED BONELESS Chuck Roasts **65c** BONE-IN **45c** Lb.

"SUPER-RIGHT" HEAVY CORN-FED BONELESS Shoulder Roasts **69c** CHUCK **45c** Lb.

"SUPER-RIGHT" HEAVY CORN-FED BONELESS RIB ROASTS 5th & 6th Ribs **69c** First 4 Ribs **79c** PER LB.

BEEF SALE

"Super-Right" Heavy Corn-Fed Beef is fully guaranteed to please your family in every way or your purchase price will be refunded in full. Bring your friends in this week, fill your freezers with "Super-Right" Quality Beef during A&P's Spring Stock-Up Sale now in progress. We will cut your purchases to your satisfaction, wrap in regular market paper and mark the contents on each package free of charge. Come in this week... place your order with the Market Manager. You may pick it up later.

- "Super-Right" Corn-Fed Beef 85 to 100 Lb. Avg. Whole Beef Arm Chuck **45c** Lb.
- "Super-Right" Corn-Fed Beef 45 to 65 Lb. Avg. Trimmed Full Beef Loin **79c** Lb.
- "Super-Right" Corn-Fed Beef 25 to 35 Lb. Avg. Whole Beef Short Loin **89c** Lb.
- "Super-Right" Corn-Fed Beef 325 to 375-Lb. Avg. Whole Side of Beef **49c** Lb.
- "Super-Right" Corn-Fed Beef 20 to 30 Lb. Avg. Whole Beef Sirloin Butt **65c** Lb.
- "Super-Right" Corn-Fed Beef 165 to 190 Lb. Avg. Whole Beef Forequarter **43c** Lb.
- "Super-Right" Corn-Fed Beef 160 to 180 Lb. Avg. Whole Beef Hindquarter **57c** Lb.
- "Super-Right" Corn-Fed Beef 85 to 100 Lb. Avg. Trimmed Beef Round **57c** Lb.

BANANAS PER LB. **10c**

U. S. NO. 1 RUSSET

POTATOES 10 Lb. **55c**

Yellow Onions 5 Lb. **29c**

IDEAL FOR BREAKFAST—FLORIDA

WHITE MEAT GRAPEFRUIT 8 Lb. **59c**

PINK MEAT GRAPEFRUIT 5 Lb. **45c**

PRICES EFF. THRU MARCH 5th