



HERE'S OUR FOUNDER - Three students from the Republic of Liberia show a visitor from their homeland the North Carolina College campus during her visit to the institution Monday. From left are Mrs. Zaria Dempster, junior; Ellen Liles, senior; Mrs. Laura W. Tucker, cultural attache and student advisor of the Liberian Embassy, Washington; and Ella Hansford, freshman. The statue is of Dr. James E. Shepard, who founded the college in 1910 and was its president until his death in 1947.



ON HUMANITIES PROGRAM -- Mrs. Randall Jarrell, of Greensboro, who read some of her late husband's poetry on the program opening the annual Humanities Week at Bennett College, Monday, is flanked by two student participants -- Misses Gracia Middleton (left) of Charleston, S. C., and Angelina Johnson, of Bettsville, N. C.

National Teacher Education Group Honors N. C. College

DURHAM - North Carolina College is among 42 American colleges and universities honored recently for excellence in teacher education by the American Association of Colleges for Teacher Education.

Announcing the establishment of its Distinguished Achievement Awards for Excellence, the association made the awards to five institutions and cited 37 others for having "programs of excellence." NCC is one of two predominantly Negro institutions included in the latter group.

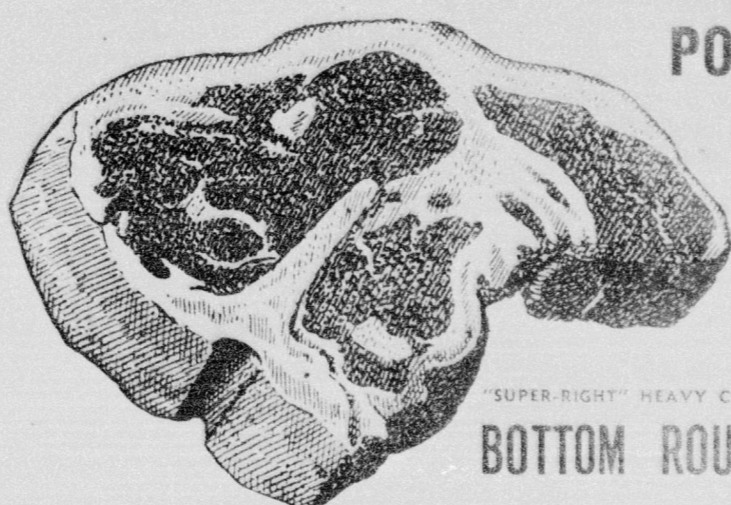
The Durham institution was recognized for the excellence of its new program designed to help teachers develop skills in working with culturally deprived children and their parents. The new program, NCC's NDEA Institute for Teachers of Disadvantaged Youth, is a revision and extension of a similar institute sponsored formerly by the Southern Education Foundation.

Directed by Dr. Joseph P. McKelvin, professor of education at NCC, and scheduled for seven weeks, from June 13 to July 29 this year, the institute will operate in cooperation with the public schools of Durham and Durham County.

Evan R. Collins, president of AACTE, stated in a report announcing the first awards: "The Distinguished Achievement Awards for Excellence in Teacher Education have been established for the purpose of identifying and honoring excellent collegiate programs of teacher education. In establishing these awards, the association has anticipated that member colleges and universities will be encouraged to describe effectively their successful programs and that these in turn will stimulate others to greater action. "The reports of the awards recipients and the thirty-seven other entries (included in the awards report) provide concrete evidence of the vigor and vitality of the large segment of American higher education comprising the membership of the association."

"SUPER-RIGHT" FAMOUS QUALITY HEAVY CORN-FED BEEF

STEAKS



PORTERHOUSE
OR
T-BONE
★ LB.

99¢

BONELESS
TOP
ROUND

85¢

"SUPER-RIGHT" HEAVY CORN-FED BEEF BONELESS
BOTTOM ROUND Steak Lb. 79c

"SUPER-RIGHT" HEAVY CORN-FED BEEF
SIRLOIN STEAK Lb. 95c

"SUPER-RIGHT" CORN-FED BEEF
CUBED ROUND Lb. 95c

● ALL SIZES 4 TO 22 LB. AVG. TOP QUALITY YOUNG

● "Super-Right" Lean, Freshly Ground

TURKEYS PER LB. **39¢** **BEEF** PER LB. **49¢**

ALLGOOD SMOKED FLAVORED SLICED

BACON 1-Lb. Pkg. **65¢** 2-Lb. Pkg. **\$1.29**

CAP'N JOHN'S FROZEN PRE-COOKED Sea Scallop Dinners 8-Oz. Pkg. **39c** CAP'N JOHN'S FROZEN FISH FILLETS 14-Oz. Pkg. **49c**

"SUPER-RIGHT" QUALITY ALL BEEF SEASONING BACON 1-Lb. Pkg. **59c** 1-Lb. Pkg. **29c**

JUST HATCHED!
the gayest array ever of

A&P's EASTER CANDY

PRICES IN THIS AD EFF. THRU SATURDAY APRIL 2nd

A&P

ANN PAGE LAYER Cake Mixes ALL VARIETIES 2 1-Lb. 2-Oz. Pkgs. **49c**

- ANN PAGE SPECIALLY PRICED!
 - REGULAR FRENCH DRESSING
 - CHEF STYLE FRENCH DRESSING
 - LOW CALORIE FRENCH DRESSING
 - Low Calorie Chef Style FRENCH Dressing
 - REGULAR ITALIAN DRESSING
 - LOW CALORIE ITALIAN DRESSING
- 8-OZ. BOT. **25¢**

A&P "OUR FINEST" GRADE "A" **APPLE SAUCE** 3 1-Lb. Cans **40c**

PASTEURIZED CHED-D-BY AMER. OR PIMENTO **CHEESE SPREAD** 2 Lb. Pkg. **79c**

● Serve With Spring Onions & Fresh Tomatoes

LETTUCE 2 HEADS **35¢**

LARGE, SNOW WHITE HEADS **Cauliflower** Head **35c**
SERVE HOT TOPPED WITH BUTTER
BROCCOLI Head **25c**
IDEAL SNACK & SALAD VALUE!
Anjou Pears Lb. **19c**
SALAD TIME SPECIAL!
Avocados 2 for **35c**

"THE REAL THING" A&P CONCENTRATED FROZEN FLORIDA **ORANGE JUICE**

2 6-Oz. Cans **35¢** 12-Oz. Can **33¢** 6 6-Oz. Cans In A Ctn. **99¢**

JANE PARKER—LARGE **ANGEL FOOD** 1-Lb. 1-Oz. Cake **39c**

NEW! A&P FLUORIDE **TOOTH PASTE** 7 1/2-OZ. MED. SIZE TUBE **49c**

ANN PAGE CHOCOLATE COVERED **MALTED MILK EGGS** 4 1/2-Oz. Pkg. **29¢**
ANN PAGE CHOCOLATE COATED **COCOANUT CREAM EGGS** 6-Oz. Pkg. **29¢**
ANN PAGE CHOCOLATE DECORATED **ASSORTED CREAM EGGS** 6-Oz. Tray **29¢**
ANN PAGE CHOCOLATE DECORATED **MARSHMALLOW EGGS** 5-Oz. Tray **29¢**
ANN PAGE ASSORTED **CANDY COTTONTAILS** 12-Oz. Pkg. **29¢**
CARNIVAL BRAND **EASTER BASKET MIX** 13-Oz. Pkg. **29¢**

CHICK CHICK—EASTER **EGG DYES** SMALL KIT **19c** LARGE KIT **39c**

ANN PAGE DELIGHTFUL DIFFERENT **Non-Parcil GUM EGGS** 14-Oz. Pkg. **29c**
ANN PAGE RED AND **BLACK JELLY EGGS** 1-Lb. Pkg. **29c**
ANN PAGE ASSORTED FRUIT FLAVORS **Candy Pops** 6-Oz. Pkg. **29c** 12 1/2-Oz. Pkg. **43c**
ANN PAGE ASSORTED **MARSHMALLOW EGGS** 12-Oz. Pkg. **29c** 1-Lb. 4 Oz. Pkg. **45c**

ANN PAGE CHOCOLATE COATED **Cocoanut Cream Eggs** 3 2 1/2-Oz. Size **25c** ANN PAGE SOLID MILK CHOCOLATE **RABBITS** 4-Oz. Size **35c**

ANN PAGE FRUIT FLAVORED—MULTI-COLORED **JELLY EGGS** 1-LB. BAG **29¢** 1-LB. 12-OZ. BAG **49¢**

HEAT with Natural GAS

Fast • Clean • Safe



SEE DIFFERENT TYPE HEATING APPLIANCES IN OUR SHOW ROOM
318 Hillsboro St. 833-6641

Support the United Fund