

Classified Rates

Cost per word
Display
For Line per
Line
10c 10c 7 1/2c 7 1/2c
Each word abbreviated, initial
of symbol count as one word.
Punctuation marks are NOT
counted as words.
The minimum number of words
in any want ad is 12 words. You
will save money by ordering your
ad to run 8 or 12 issues.
Weekly Want Ads may be tele-
phoned through Wednesday up to
10 A. M.

C. W. HARRIS TRANSFER CO.
Local and long distance moving,
Shamkatte, N. C. or contact
at East Side Restaurant, Cabar-
rus Street.

PIANOS—Story and Clark Consoak
Pianos, World's Largest Selling
Brand, Discount Prices, Bank Fi-
nancing, Hooper Piano Co., 119
Main St., Garner, N. C. Phone
778-8818.

JEFFREY'S SEAFOOD — "Fresh
Seafoods From the Coast To
You Daily, 1201 New Bern Ave.,
Phone TE 4-9621.

CIVILLA BEAUTY COLLEGE—A
complete course in Beauty Cul-
ture, Personality and Charm. Day
and night classes; weekly or
monthly. Air conditioned. Mrs.
C. J. Pitts, Owner-Manager, 229
S. East Street, Raleigh, N. C.

Cooper's Bar-B-Q
BAR-B-Q and
CHICKEN
(Our Specialty)
PIG AND CHICKEN
109 E. Davis St.

POOLE BROTHERS Well Drilling
and Well Boring. Day Phone
298-2185, Night Phone 268-2578.
Route 5, Raleigh, N. C.

CUSTOM COVERED SHOES—To
match any outfit. 883-4511.
RALEIGH STOCKYARDS
Livestock Auction, Tuesday.
Horse sale 1st Friday night each
month. Office TE 3-0550. Home
298-2180.

LEGAL NOTICES

NOTICE
NORTH CAROLINA
WAKE COUNTY
THEOLA H. GARRISON, Plaintiff
LARVIN F. GARRISON, JR., De-
endant
The above named defendant,
Larvin Garrison, Jr., will take no-
tice that an action entitled as
above has been commenced in the
Superior Court of Wake County,
North Carolina, by the plaintiff
and preceding the bringing of this
action, the defendant will
further take notice that he is
required to appear at the office
of the Clerk of the Superior Court
of Wake County, in Raleigh, North
Carolina, on or before the 3rd day of
November, 1967 and answer or demur
to the complaint in said action,
or the plaintiff will apply to the
Court for the relief demanded in
the complaint.
With 28 day of September, 1967.
GRETCHEEN BARNETTE, Ass't.
Clerk, Superior Court, Wake
County
W. FRANK BROWER, Attorney
Sept. 20, Oct. 7-14-21, 1967.

NOTICE OF SERVICE OF PRO-
CESS BY FIVE CARRIAGES
STATE OF NORTH CAROLINA
WAKE COUNTY
IN THE SUPERIOR COURT
MAKIN B. HAYTON, Plaintiff
CHESTER FIELD HAYTON, De-
endant
Chester Field Hayton take
notice that a pleading seeking re-
lief against you has been filed in
the above entitled action.
The nature of the relief being
sought is as follows: To secure
an absolute divorce, to have the
plaintiff named in the above
captioned action, to have the
grounds of one year continuous
separation between the plaintiff
and defendant.
You are required to make de-
fense to such pleadings not later
than November 1967 and upon
your failure to do so, the party
seeking relief against you will
apply to the Court for the relief
sought.
With 21st day of September, 1967.
GRETCHEEN BARNETTE, Ass't.
Clerk, Superior Court,
F. J. CARRIAGE, Attorney
Sept. 20, Oct. 7-14-21, 1967.

NOTICE OF SERVICE OF PRO-
CESS BY PUBLICATION
STATE OF NORTH CAROLINA
WAKE COUNTY
IN THE SUPERIOR COURT
MARY ESTHER BELL, Plaintiff
PHILIP BELL, Defendant
To Philip Bell: Take notice that
a pleading seeking relief against
you has been filed in the above
captioned action.
The nature of the relief being
sought is as follows:
To secure an absolute divorce
upon the part of the plaintiff based
upon the grounds of one year
continuous separation between the
plaintiff and defendant.
You are required to make de-
fense to such pleadings not later
than December 9, 1967, and upon
your failure to do so, the party
seeking relief against you will
apply to the Court for the relief
sought.
With 12th day of October, 1967.
GRETCHEEN BARNETTE, Ass't.
Clerk of Superior Court
F. J. CARRIAGE, Attorney
Oct. 21-28; Nov. 4, 11, 1967.

EXECUTOR'S NOTICE
NORTH CAROLINA
WAKE COUNTY
Having qualified as executor of
the Estate of Thomas Miller, de-
ceased, late of Wake County,
North Carolina, this is to notify
all persons having claims against
the Estate of said deceased to ex-
hibit them to the undersigned at
174 S. Bloodworth Street, Raleigh,
North Carolina, on or before the
10th day of April, 1968, or this
notice will be pleaded in bar of
their recovery. All persons in-
debted to the Estate will please
make immediate payment.
With 12th day of October, 1967.
WANDA MARTHA LIND, Executrix
F. J. CARRIAGE, Attorney
Oct. 21-28; Nov. 4, 11, 1967.

IN MEMORIAM
In loving remembrance of my
brother, Mr. Thomas Miller,
whom God called home four years
ago, October 17, 1963.
Though your smile is gone forever
and your face I cannot see,
I shall never lose sweet remem-
brance. A part of me went with
you that day God called you
home.
Your devoted grandson,
LAWRENCE MILLER



ARE YOU, OR ARE YOU NOT? - These three ladies caught Lt. Governor Robert W. Scott, in a talking mood at the luncheon he keynoted at the Statler Hilton Hotel recently and talked freely with him. He had discussed politics in his speech and no doubt the women were congratulating him. The luncheon was the climax to a busy summer program that the Democratic women have carried on throughout the season. The luncheon brought them together from all sections of Wake County and the district. Scott is shown on the left with Mrs. James Boyer, Mrs. Nick Galifianakis, who was wrongly identified in a recent issue and Miss Mae Ligon smile their approval.



YOU ARE THE DETECTIVE
You are a passenger on a ship in the Caribbean, and to-
night because of a raging storm which has been tossing the
ship about for the past hour or so, you have been unable to
sleep. All you have been able to do is cling to the bed in
your cabin to prevent yourself from being thrown about and
possibly injured. Finally, as the storm begins to abate, there
is a sharp rap on your door and when you answer it, you are
confronted by the worried-looking First Officer of the ship,
Raymond Shannon.

"Sorry to disturb you this way," he says, "but something
very bad has happened. A little over an hour ago, before the
storm hit us, I was hurrying along one of the passageways...
It was dimly lighted, and I almost stumbled over a body
lying there. I almost fell over when I discovered it was
Henry Kruger, the millionaire VIP... a bullet hole in his fore-
head!"

Shannon pauses to mop his brow with his handkerchief, then
continues: "I didn't know what to do... there were so many things
to take care of with that storm rising so fast. I guess I should
have left him there where I found him until the proper investi-
gation had been made, but I wasn't thinking too clearly... so
I carried him into an empty cabin, put him on a berth, and locked
the door. Then I hurried about my duties, and in the stress
and strain of the storm I didn't even have time to think any
more about it or even tell the captain. I still haven't told him
or anyone else about it. Would you mind coming with me and
looking at... at the body?"

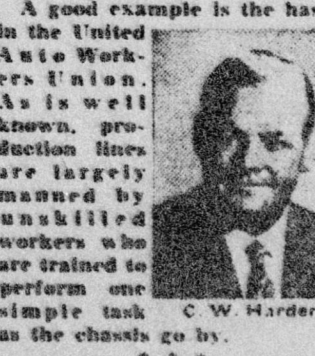
You accompany the first officer along the passageway, and
finally he stops before a door, unlocks it, and when you follow
him inside you see the gray-haired millionaire's body lying
on the narrow berth, face up, his hands resting on his body as
though he were sleeping—but the bullet hole in his forehead
telling quite a different story. After noting a couple of spots
of blood on the carpet nearby, you turn back to Raymond Shan-
non.

"Does anyone else have access to this cabin?" You ask him.
"Well, there are a couple of keys in the captain's quarters,
but I happen to know they are still there. I myself have a master
key to all the cabins, the only one we have, and that's what I
used to open this cabin."

Why do you doubt Raymond Shannon's story?
You remember vividly how you were compelled to cling to
your bed while the ship was being tossed about during the
height of the storm. Yet, according to Shannon's story, the vic-
tim's hands had lain undisturbed on his body. Surely the body
would have been thrown or rolled off the berth onto the floor.

WASHINGTON AND "SMALL BUSINESS"

Although there is often evi-
dence that some aspects of la-
bor union's leadership political
ideologies are detrimental to the
nation, there are also ideologi-
cal differences growing within
the unions.



A good example is the hassle
in the United
Auto Workers
Union.
As is well
known, pro-
duction lines
are largely
manned by
unskilled
workers who
are trained to
perform one
simple task
as the chassis go by.
To keep the plant rolling,
there is a certain percentage of
the employees who are skilled
craftsmen such as machinists,
electricians, and others who
have either through schooling,
or long apprenticeship, become
highly skilled people. Without
them, any auto plant would
shut down.
But the problem developing
in the auto union is the fact
that there are more unskilled
workers than skilled workers,
thus there are more unskilled
workers in the union than skilled.

Naturally, the leaders of the
union realize the danger of
their bread comes from control
of the unskilled mass, negoti-
ate proportionately better contracts
for the unskilled than they do
for the skilled.

Grapes For Your Supper
Most people think of grapes as
something you have for snacks or
dessert. But grape cookery—
grapes used imaginatively in ap-
pealing main course dishes—is a
well-established gourmet tradi-
tion.

Grape sauce is a perfect com-
panion for chicken and light
meats. For a delicious dish that
will give any cook a reputation of
excellence, try:

**CHICKEN SUPREMES WITH
SEDLISS GRAPE SAUCE**
Makes 6 servings

6 large whole chicken breasts
Salt and garlic powder
1/4 cup butter or margarine
1/4 cup oil
1 can (6 ounces) whole button
mushrooms, drained
1/2 cup dry white wine
1 cup (1/2 pint) heavy cream
3 egg yolks
2 cups stemmed Thompson seed-
less grapes
Trim excess skin from chicken
breasts. Wash and pat dry.
Sprinkle halves with salt and a
little garlic powder. In a large
skillet melt butter and add oil.
Brown chicken breasts on all
sides. Drain excess fat. Add but-
ter, mushrooms and white wine.
Cover tightly and simmer for 30
minutes or until chicken is
tender. In a saucepan beat cream
and egg yolks until smooth.
Drain pan drippings from
chicken and stir gradually into
cream mixture. Cook over very
low heat, stirring constantly un-
til mixture thickens slightly. Stir
in grapes. Season to taste with
salt. Put hot chicken breasts on a
platter and spoon grape sauce
over them. Serve with hot cooked
wild rice.



Fall In For Fall

Now that there's a nip of fall
in the air, it's time to get your
home and workshop ready for the
cool-and-busy-days ahead.

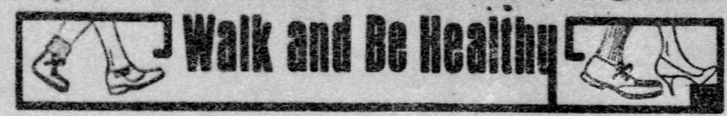
First chore on your checklist
should be a careful inspection of
all garden tools and furniture.
If there's any evidence of rust,
remove it with a wire brush and
steel wool before storing for the
season. You might also try paint-
ing some tools with a metal
primer to prevent further rust-
ing.

And how have your folding
chairs, wrought iron furniture,
and porch and window awnings
fared during the dog days? To
repair any damage that "easy
living" may have done, use a
tough, rust-inhibiting paint like
Acme's All Surface Enamel.
Since it comes in a sparkling ar-
ray of colors and provides maxi-
mum resistance to sun, moisture,
and salt air, it's the perfect finish
for all metal and wood garden
furnishings.

When you've completed the job
of putting summer tools and fur-
niture back into shape, take stock
of your garage or basement
workshop. Start an organization
drive there by painting each
shelf or compartment a different
color to help separate tools into
convenient categories. Paint
hanging racks and the handles of
tools that belong there in the
same color. It will make them
easier to spot when you need
them and easier to put away
when you're through.

To simplify the job, use Acme's
All Surface Enamel in the aerosol
spray. This way, it will take
only a few minutes of spray
painting to apply the hard-
drying surface. Since the enamel
is completely non-toxic, you'll be
able to use it on all the children's
toys and furniture that come to
Daddy's workshop for repair.

Eventually the AFL and CIO
merged, but the marriage has
shown signs of progressively
becoming strained. It is perhaps
a situation that results when a
competent, hard working man
marries and then learns that he
is also being called upon to
support herds of his wife's less
able relatives.



FEET OFTEN SIGNAL CHRONIC DISEASE

Chronic disease is the nation's
number one health problem.
According to recent estimates,
more than 70 million Ameri-
cans are afflicted by one or
more of these conditions which
place some limitations on their
daily lives and on their ability
to remain active members of
the community.

Ranking especially high
among these chronic ailments
are diabetes and arthritis. Dia-
betes is now the seventh lead-
ing cause of death in the United
States and the third leading
cause of blindness. Arthritis
affects one out of every 12 of
our citizens. The effect of these
diseases when measured in
terms of personal suffering and
the cost to society of support-
ing disabled victims is appal-
ling.

However, the vast majority
of those affected by diabetes
and arthritis can be helped to
live virtually normal lives if
their conditions are diagnosed
and treated at an early stage.
Medical experts agree that the
podiatrist's office and commu-
nity podiatry screening pro-
grams are the places where
much of this important early
detection can take place. For
many of the symptoms of dia-
betes and arthritis appear first
in the foot.

During a symposium spon-
sored by the New Jersey
Podiatry Society at the Rutgers
University Institute of Micro-
biology, it was pointed out that
in the diabetic, there occurs "a
wide variety of changes of the
skin and bones of the feet,
ranging from color changes to
ulcerations, infections and in-
volvement of bone." These
changes are found even when
the individual does not experi-
ence the excessive thirst, fre-
quent urination and weight loss
which are classically as-

BURL ALLEN'S INK TONGUE

ANY COLUMNIST - even a
SMALL-TIME one -- knows
that a good friend is not neces-
sarily a good reader. So, I
was not really taken when a
good friend TONGUE-LASHED
me for what she tried to call
my poor choice of words! I
merely explained that I usually
use general terms, and some-
times a loftier word when its
meaning is obvious. -- She
cursed me for OBVIOUS! I
mentioned how a broad vocabu-
lary can be accomplished by
making a point of searching out
the meanings of exotic words. --
She cursed me for EXOTIC!
Now, there are two for her to
look up.

Well, having found out that
at least many readers disagree
with my friend as to the read-
ability of my column, I could
thankfully let it go at that, --
but every hall of society hous-
es so many victims of such self-
crippling attitudes; --
Some girls say of a chum:
"She's all right, -- but, --"
That lingering "but," may
prove as venomous as most po-
isons by sicking the hearer's
curiosity after its own conclu-
sion. Of course, those girls
forget that sometimes the hear-
er's curiosity is smart enough
to wonder about the INFORMER.
How do you like a guy who
replies: "He's okay, --far's
I know."

One may assume that perhaps
the informer knows nothing
wrong, but maybe he knows
somebody who knows other-
wise. -- Or he probably is not
really sure on the subject, and
is being cautious just in case.
In either case, the answer is
rather stupid, for the question-
er does not expect the inform-
er to testify any farther than
the informer knows.

And deliver me from that
salesman who prides his own
merchandise mostly by announ-
cing the counterparts in
other trades! If I find enough
advantage in his, I can readily
discover the disadvantage in
the others.

Yes, such people should rea-
lize that the uncomfortable dif-
ferences often existing between

Exchange.
It's not merely Amex trading
volume per se...the disturbing
factor is what I believe to be an
alarming increase in the ratio of
volume on the Amex to that on the
New York Stock Exchange. In
recent sessions, Amex volume has
been as high as 60% of that on the
Big Board. That's abnormal. And
dangerous.

Many stocks have doubled on
this exchange so far this year and
some have tripled. And this has
had a natural, predictable effect
of enormous profits being made.

It's not merely Amex trading
volume per se...the disturbing
factor is what I believe to be an
alarming increase in the ratio of
volume on the Amex to that on the
New York Stock Exchange. In
recent sessions, Amex volume has
been as high as 60% of that on the
Big Board. That's abnormal. And
dangerous.

Many stocks have doubled on
this exchange so far this year and
some have tripled. And this has
had a natural, predictable effect
of enormous profits being made.

TOWN & COUNTRY GARAGE

GENERAL REPAIRS
TUNE-UPS-OVERALLS
TRANSMISSIONS
IGNITIONS
24-Hour Service
Light Duty Wrecker
Rock Quarry Rd.
830-7009
NIGHT 779-1910
RUTUS JOHNSON, Prop.

Everything For . . . BUILDING REMODELING REPAIRING

- LUMBER
- MILLWORK
- ATHEY'S PAINTS
- BUILDING MATERIALS
- BUSSWIN HARDWARE

AT OUR NEW LOCATION
On RALEIGH BELTLINE
CAROLINA
BUILDERS CORP.
BETWEEN U. S. 1 and 64
Ph. 828-7471—Raleigh, N. C.

Attention Veterans!

Buy your new house in Beautiful Kingwood Forest.
Move in for only \$100 with monthly payments as low
as \$90. Non-Veterans move in for slightly more. All
New, 3 bedrooms, 1 or 1 1/2 baths, with or without
carports, paved streets, public water and sewer, and
many extras. Call and make an appointment to pick
out your house now. Several models to choose from.

Barefoot Realty & Mortgage Co.

SELLING AGENTS
Nites: H. M. Keith, Jr., Phone 834-9550
403-5 Lawyers Bldg., Phone 821-5432

WALL STREET Notebook

BY ROBERT B. JOHNSON, Research Director
PAINE, WEBBER, JACKSON & CURTIS
The Perils Of "Performance"

Performance has achieved the status of a near cult in the stock
market and has sparked a dangerous speculative fever. This fever
—right now—is providing the principal momentum for the market.
That is why recent daily trading
volume reached such high levels.
In the idiom of the day, I call this
obsession with performance "a
pseudo-psych-
delic syn-
drome."
Speculation
—on an inform-
ed basis, by
those who
know what
they're doing
and who recognize (and are finan-
cially able to assume) the obvious
risks inherent in speculating—is one