



**OUTSTANDING STUDENTS HONORED AT HOLDING** - Sara Harris (left) of Route #1, Morrisville, and Carolyn Bass (right) of 323 Maple Street, Raleigh, were honored as Outstanding Students in the WIN Training Program offered by Holding Technical Institute. (A third student, Carolyn Hunter, also honored as an Outstanding Student, was not available when the photo was made.) These awards were made during ceremonies held Friday afternoon at Holding Tech's Special Programs Annex, located at 415 Hillsborough Street in Raleigh. During the Awards Program 70 WIN enrollees were honored for the progress they have made during the time they have been involved in the training, and certificates of attendance were presented to those whose attendance record merited this award. The award ceremony was jointly sponsored by the WIN Program, the Employment Security Commission, and Holding Tech.

## Six NCCU Students Get Posts

DURHAM - Six North Carolina Central University students, including one sophomore, four juniors, and one senior, have been certified as winners of last week's campus-wide election.

Harvey White, a senior political science major from Tarboro, will head the university's Student Government Association as president. His vice-president will be Waverly M. Faison, a junior history major from Clinton.

White won a majority of 765 votes, running in a field of four candidates. His three opponents garnered a total of 514 votes. Faison, who had four opponents, won with 469 votes to his nearest opponent's 328.

Queen Marable, a junior business administration major from South Boston, Va., was the winner in her campaign against five opponents for Miss NCCU. As Miss NCCU, Miss Marable will be the university's official representative in homecoming activities, parades, and similar events.

Editor of the campus year book, "The Eagle," for the second year will be Miss Carole Brafford, a junior business education major from Philadelphia, Pa. Miss Dora

Hinson, who ran without opposition, will be editor of the campus literary publication, "Ex Umbra." Miss Hinson is a junior art major from Wadesboro.

Johnnie "Jae" Joyner, a sophomore accounting major from Rocky Mount who served this year as elections board chairman, was the unopposed winner of the editorship of the campus newspaper, "The Echo."

Class officers and student congress representatives were also elected last week.

## Muldrow To Attend Gov.'s School Soon

Henry Muldrow, Jr., a student at J. W. Ligon High School will attend the Governor's School, in Winston-Salem, North Carolina this summer. He has been selected in the area of Drama, for the seven-week course. (June 20 - August 7)

Muldrow has participated in several Raleigh Little Theatre and Raleigh Cultural Center productions: "Oliver," "The Music Man," "Bye Bye Birdie," "Finian's Rainbow," and "Oklahoma."

At Ligon, Muldrow is the elected president of the Student Council for the '71-'72 school year. He is a member of the Mu Alpha Theta, Math Honor Society; Drama Club; French Jubilee Singers; Modern Music Masters; and Special Ensemble. This year, he serves as Assistant Editor of the school's yearbook.

With interests in becoming a musician, he feels that Drama will definitely be an asset to his career. This summer experience provides an opportunity and challenge for a most enjoyable and educational summer!

"an Energy and Environmental Center where our programs will include research, education and training."

He pointed out that the company expects to cooperate with nearby universities, state and federal agencies, and the Research Triangle in conducting research and training programs.

Discussing the tax value of the complex, Harris said that a billion dollar investment in 1970 would have increased the value of all taxable property in Wake County from \$1.8 to \$2.8 billion, or about 55 percent.

Harris indicated an order has been placed with Westinghouse for the four nuclear steam systems for the plant, including initial fuel supply.

Harris said a construction employment peak of 1,500 workers is expected to be reached early in 1975, remaining at that level for about three years, with an estimated construction payroll of \$100 million. The completed plant is to require an operating staff of about 180 people.

Units for the plant will be equipped with the very latest technological devices, the best equipment that is available to maximize protection of the environment," Harris noted.

"Contribution of this plant to the radioactivity level will be less than the increased radioactivity that one would experience if he moved from Wilmington to Asheville,

## CP&L Announces \$1 Billion Wake County Complex

Plans for a \$1 billion energy-generating complex in Wake County were announced Friday by officials of Carolina Power & Light Co., with four nuclear power units scheduled to be completed by 1980.

CP&L President Shearon Harris, speaking to Wake County officials during a breakfast meeting, reported that the 3.6 million kilowatt capability of the four-unit plant would equal power output of the entire CP&L system at the beginning of 1971.

Harris said it is proposed that the first unit would come into operation in 1977, with the second, third and fourth units scheduled for completion in 1978, 1979, and 1980, respectively. Each of the four units will produce 900,000 kilowatts.

The 18,000 acres required for the complex are located in the southwest corner of Wake County and the adjoining area of Chatham County, about 20 miles south of Raleigh. Closest community to the site is Bonaire, to the north, with Apex, Holly Springs and Fuquay-Varina to the east of the site.

J. A. Jones, CP&L senior vice president and group executive for engineering and operations, reported that a major feature of the energy complex would be two connecting lakes covering 10,500 acres. The plant will be on the north side of the lakes, about one and one-half miles south of U. S. 1.

will be located in Chatham County, south of the Wake County boundary. Construction on the lakes is expected to begin early next year, with completion of the filling anticipated for early 1976.

"In seeking a site in this part of the CP&L service area, we have found the White Oak and Buckhorn Creek Watershed outstanding for several reasons," Harris said.

"In our judgment, this development will be excellent utilization of land presently devoted primarily to growing pulpwood," he continued. "Plus it is a sparsely-populated area, and a minimum number of families will have to move."

Jones noted that fewer than 50 families currently live within the proposed plant development and less than 150 people will be displaced.

"We believe the development of this project will benefit the environment," Harris said. Harris also noted that the site is centrally located, and near "major load centers" in the CP&L system.

He noted that in addition to serving as a source of essential electric energy, "we visualize this plant and its 10,500 acres of lake surface will be a public resource with great recreational, educational and research values."

Harris announced that an integral part of the development will be establishment of



**OUTGOING PRESIDENT HONORS TWO**-From left: Rev. J. R. R. McRay, Elizabeth City, and Rev. Joy Johnson, Fairmont, flank outgoing president, Rev. E. B. Turner as they are honored during the banquet held during Shaw University Theological Alumni Day (Wed., April 28th) on the campus of Shaw University. Rev. McRay and Rev. Johnson received the honors for the devoted service to Shaw University and to the ministry. Rev. Johnson is the second Negro to be elected to the N. C. House of Delegates since the days of Reconstruction.

and technological communication patterns.

Each of these requirements may seriously affect the relationship between people and the benefits to be derived from such relationships.

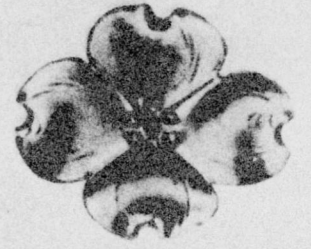
READERS: For my free

"Parliamentary Law Information Sheet," send two stamps and a long self-addressed business envelope to M.H. Boulware, Box 310-A, Florida A&M University, Tallahassee, Florida -- 32307.

## Weatherman Jewelers

1904 Hillsborough St.  
Raleigh, N. C.

### Hand Made Sterling Dogwood Jewelry



8S Pin



1L Scroll Pin

# 15 8S Pin \$3.50

# 85 1LS Pin \$2.50

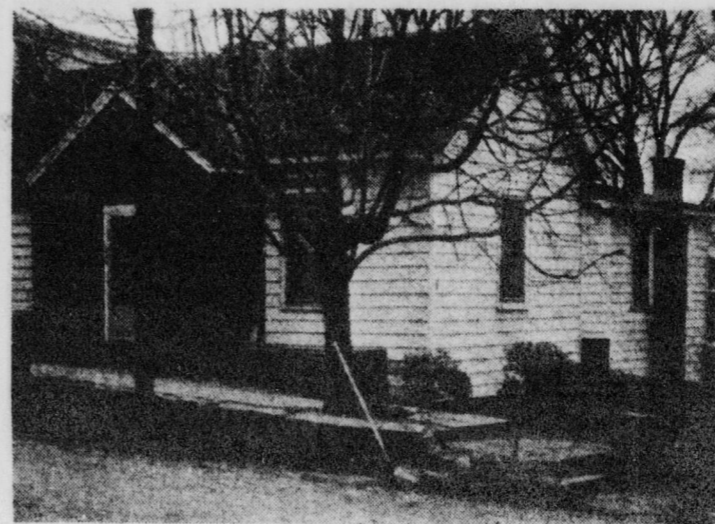
Earrings to Match  
\$3.50

Order Now For

## MOTHER'S DAY

A Lasting Gift

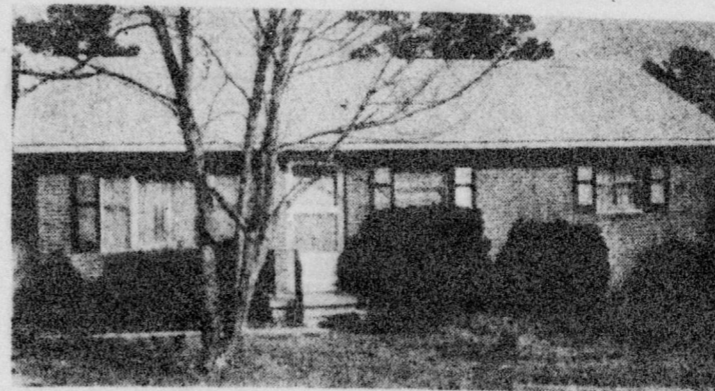
## Homes You Can Move Into Today. These And Other Homes Available Through Will Hudson Co. & Associates



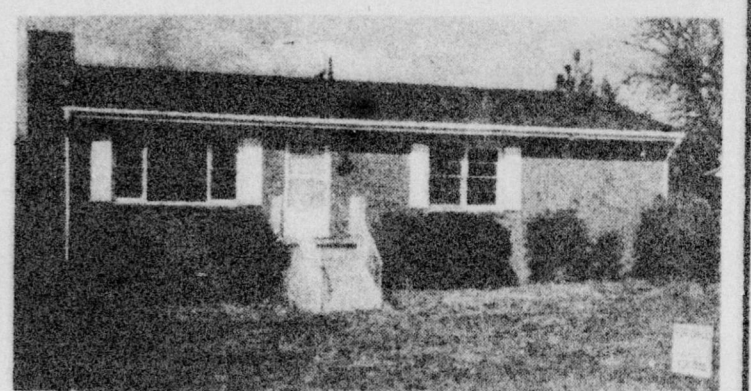
\$30,000—10 ROOMS, 2 apartments: 1 bedroom apartment upstairs; 4 bedroom apartment downstairs. Ideal for business investment. Owner will finance.



6 ROOMS, \$13,000. All financing available. Worth much more. Will sacrifice.



3 BEDROOMS, 1 1/2 baths, with fire place. \$17,000. FHA or conventional loan.



CENTRAL AIR, all appliances, and many other extras. \$16,500. A best buy.



3 BEDROOMS, gas heat, corner lot. Can be assumed. \$15,000. FHA or VA.



4 BEDROOMS, large family room, recreation room, 2 1/2 baths. Central air and heat, fenced yard. \$23,000. Very plush.



2 BEDROOMS, newly painted inside and out. \$12,500.



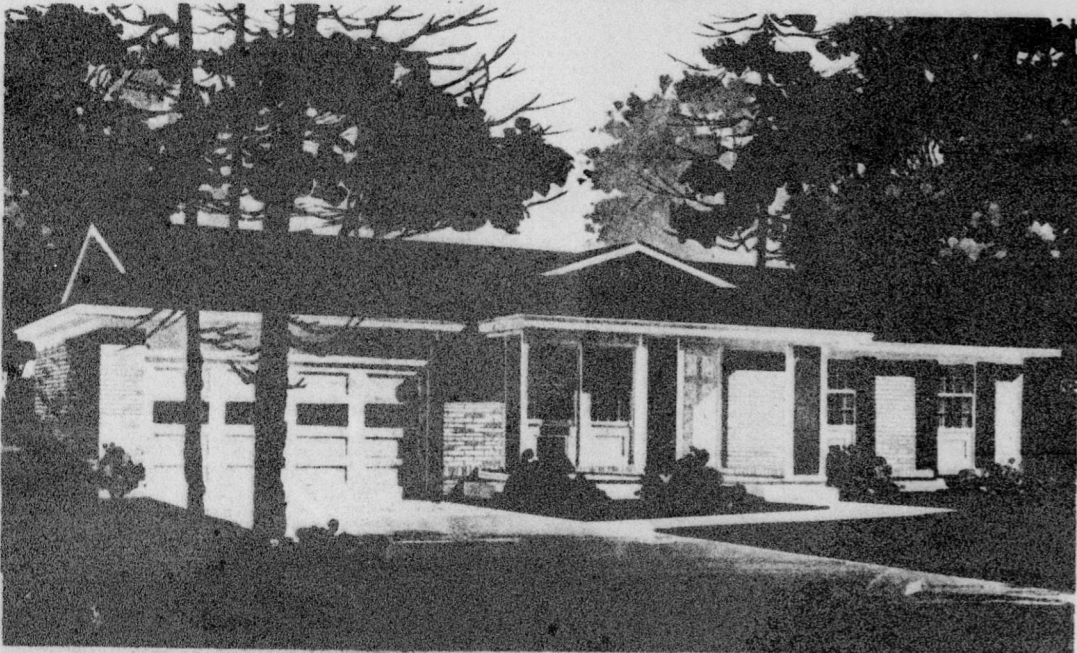
2 BEDROOMS, central air with unfinished basement. \$14,000.

## Will Hudson Co. & Associates

2401 SANDERFORD ROAD—828-1300  
NIGHT AND WEEKENDS 828-8393

## OPEN HOUSE

### Foxfire Subdivision



**KINGSBERRY HOMES** *at 107 The Danville*  
Creating Homeowners through Excellence of Design

2325 SANDERFORD ROAD  
OPEN UNTIL 7 DAILY  
\$28,000

No money down. VA/FHA. 10% down for qualified buyers.

## Will Hudson Co., & Associates

2401 SANDERFORD ROAD—828-1300  
NIGHT AND WEEKENDS 828-8393

## Jest For Fun

By Marcus H. Boulware  
Geri - Antics

It used to be a slope,  
A gentle rise, until  
The years go in my knees  
And now it is a hill.  
Daylight Saving Time

Daylight Saving Time is depressing to people who got to get to work at daybreak. Instead of seeing the glorious morning sunlight, we'll see stars and darkness. More than this, you may miss the eleven o'clock sermon when you fail to set your clock. That's what I did last year. Imagine my embarrassment, when people were leaving church as I arrive to enter the building.

### THIS IS GOOD NEWS

Allmony is a companion of divorce. "Allmony is, without doubt, essentially immoral... No self-respecting woman in good health should want allmony." But you'd be surprised how many women forget about self-respect. (Are you kidding, No man, no -- No!)

Some women will skin your hide, and turn your skeleton inside out. And the man can't sleep in peace until he is dead! And I mean "Dead." What can we say to these things? Dear Lord, we really don't know. Please help us.

## Yes, We All Talk

### LANGUAGE: SOCIAL EXPECTATIONS

Language and speech are what make a man a little lower than the angels. Certain social needs must be fulfilled by speech; therefore, the individual uses interpersonal communication to meet his need for fulfilling social expectations. In almost all cultures the individual is expected to comply with a minimal number of these language requirements.

These requirements include:  
1. Acknowledge the presence of others, for example, "How are you?"

2. Acknowledge the nature of the situation. For instance, what is the purpose of the encounter or meeting; the second is the role function of each participant.

3. Clarifying the nature of a relationship with another person. Given a little time, a person can change. For instance, the news media has been talking about "the new Mr. Nixon."

4. Complying with cultural norms. Note that there appears to be three general categories of culture differences: formal customs, informal customs,