

Proposed site for a new \$1-billion electric generating complex for Wake County was announced Friday by officials of Carolina Power & Light Co. The entire project will require about 18,000 acres, with 10,500 acres devoted to lake surface. A series of dams and canals will direct the water flowing to a four-unit nuclear power plant, which by 1980 would be capable of generating 3.6 million kilowatts - or an amount equal to the entire CP&L system at the beginning of 1971. Construction on the lakes is expected to begin early in 1972, with filling completed early in 1976. The lakes will be available to the public for recreational uses to the maximum extent practicable.



GREETS SHAW DAY SPEAKER, WIFE - Dr. J. Archie Hargraves, Shaw University's President-elect, (center) and Mrs. Hargraves (right), receive greetings from a Sunday morning worshipper after Shaw Day services at First Baptist Church in Raleigh.

CP&L Asks Permission To Increase Its Rates

Carolina Power & Light Co. Monday asked permission to increase its retail rates on electric service in North Carolina by 5.63 percent on an emergency basis.

The power company asked the State Utilities Commission to allow the increase to be effective no later than June 3. It would add less than three cents a day to the average customer's bill for electricity used at home.

Shearon Harris, CP&L president, says the firm's expenses have risen sharply from the basis on which its previous 11.86 percent increase was based. The present rates are based on an allowance for fuel of 41.5 cents per million Btu. But CP&L's cost of fuel for the first quarter of this year has been 52.02 cents per million Btu. An increase of one cent per million Btu amounts to about \$1,650,000 annually for the company.

rates in North Carolina are based," he emphasized.

In its request to the commission, the company says presently approved rates do not afford it the opportunity for just and reasonable earnings, CP&L recently reported

"Our expense for fuel burned in the first three months of this year was \$4.16 million more than the estimated fuel

'68 LEMANS, power brakes and steering, automatic transmission. . . \$1895

'70 VOLKS-WAGEN. . . \$1895

'68 TOYOTA, 4 door, automatic trans. . . \$1295

'67 CORTINA, 2 door straight drive. . . \$795

'65 CLASSIC, 4 door, straight drive. . . \$795

'65 CLASSIC Wagon, automatic trans. . . \$795

'65 CORVAIR, 4 door hard-top, automatic trans. . . \$695

'64 VOLKS-WAGEN. . . \$695

WEAVER BROS. INC. USED CARS
101 E. SOUTH ST.
Phone 834-6266

Liberalley equipped. Conservatively priced. \$2439 Delivered

Toyota Mark II 4 Door

Up to 25 miles per gallon. Equipped with 108 h.p. engine, 4 speed transmission, power front disc brakes, reclining bucket seats, nylon carpet, white tires, and many other standard features.

TOYOTA GOODMAN Toyota, Inc. 2401 Wake Forest Rd. 828-5972



SHAW'S LOCAL ALUMNI OFFICERS - The newly-elected officers of the local Shaw alumni held the first planning meeting in the University Learning Center recently. Reading from left to right around the table: Miss Almerna Nunn, treasurer; Miss Beatrice Martin, secretary; Leon Herndon, president; and Mrs. Minnie Blakely, vice-president. Miss Almetta Armstrong, assistant secretary, was absent. In the background can be seen students at work in the carrells. (See story).

Shaw's Raleigh-Wake Alumni Hold Election Meet At K&W

BY MRS. MINNIE D. TURNER

The Raleigh Wake Chapter of Shaw University Alumni held its regular monthly April meeting in Room I of North Hills K and W Cafeteria. The business of this dinner meeting consisted mainly of the election of officers and brief reports by Alfred Newkirk, Director of Shaw Alumni Affairs; and his assistant, Nathaniel Boykin, who had attended recently a gala fundraising festival held at the Apollo Theatre in New York City by the New York chapters of Shaw alumni; and Vernon Malone, president of the National Alumni Association of Shaw University.

alumni to be up and doing, to double their usual work for Shaw in order to serve as a pilot light to alumni throughout the country. They urged the group to conduct programs for fund-raising similar to that sponsored by the New York chapters, using various artists to provide wholesome recreation for the general public.

Prompted by questions that had been raised by a recent news release concerning the plan to construct a housing complex of 100 units by the Shaw Foundation, Inc., Mr. Malone, second vice president of the board of trustees of the corporation, attempted to correct what had seemed to be a wrong conception of the connection between Shaw University and the recently formed corporation. He explained that Shaw University has absolutely no responsibility for financing the project to be located on Cross Link Road near Campella Drive. Rather the project is to be federally funded through the management of an independent board of trustees, whose duties involve providing sound and safe supervision of the construction of the housing project and establishing regulatory standards for residence.

Expressing gratitude to Mrs. Rivers for her whole-hearted support to the Office of Alumni Affairs, and to the interests of Shaw in general, both Mr. Newkirk and his assistant, Mr. Boykin challenged the local

Moreover, the Mechanics and Farmers Bank of Durham is the institution through which a federal loan for financing the project will be managed. The independent, legally chartered board of trustees, known as the Shaw University Foundation, Inc., consists of the following persons: Dr. J. Archie Hargraves, president; J. J. Sanson, first vice president; Vernon Malone, second vice president; Attorney J. Melville Broughton, Jr., Attorney Allen Adams; Mrs. Peggy Shriver; Mr. J. W. Goodale, Mrs. Mamie Walker; Ralph Baylor; and the Reverend Paul H. Johnson.

The housing facility to be constructed by the John W. Winters and Company Homebuilders, is expected to be ready for occupancy by mid-1972, at a cost of approximately one and a quarter million dollars. Rental charges for residency will be subsidized by the federal government on the basis of eligibility.

YMCA News

The Bloodworth Street YMCA Boys Summer Day Camp will begin June 7, 1971 and continue until August 13, 1971 officials of the "Y" have announced. Activities are scheduled to begin at 9:00 a.m. and close at 3:00 p.m., with the privilege of remaining later if desirable. Special emphasis will be placed on social fitness or the ability to follow rules.

Special features of the camp will include physical fitness exercises, gymnastics, indoor and outdoor games, arts and crafts, modeling, musical activities, swimming classes, trips to points of educational and historical interest. Out of town trips will include the Carolina Beach and the Battleship North Carolina at Wilmington and other trips to be announced later.

Further information may be obtained by writing the Director, Boys Day Camp, Bloodworth Street YMCA, P.O. Box 25697, Raleigh, North Carolina 27611 or by calling 833-1256.

Next to the love of God, the love of country is the best preventive of crime. -George Borrow.

earnings of \$1.31 per share of common stock for the 12 months ending March 31. That was a drop of almost 37 percent per share from the \$2.07 earned in the comparable 12 months' period for last year.

"We consider it essential that we have rate relief now," Harris declared. "It is necessary if we are going to recover our operating costs, especially fuel, and if we are going to attract tremendous sums of money we will require to finance our construction program. We must have this construction to meet our customers' needs for electricity."

He said CP&L's construction program will require about \$2.4 billion by 1978, and approximately \$2 billion of this must come in the form of new capital from people who have savings to invest.

"We have to compete for

capital," he emphasized. "We can't expect people to invest their savings in CP&L unless they have reasonable expectation of earning as much from us as they would elsewhere."

Fishing Time

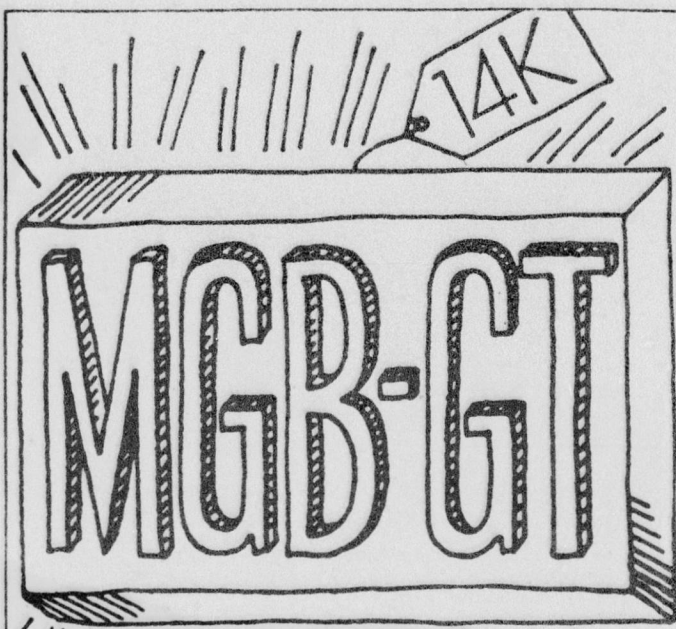
This is the time of year blood rises in the veins of the millions of fishing Americans. From now until fall fish will be taken in the streams and lakes of every state-many of which have been frozen over during the winter.

To help the beginner, and remind the non-expert, here are the basic rules of fishing: Best time is at dawn and dusk. The hour after a changing tide (in salt water) is good.

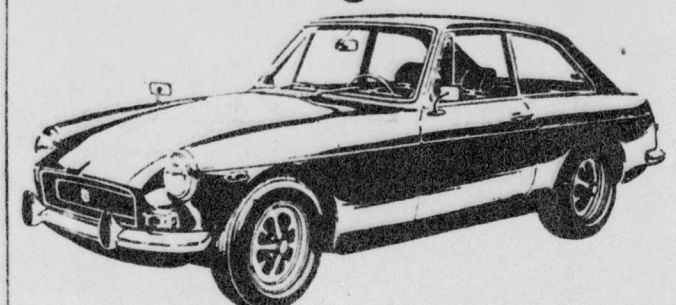
spring fever days

BIG REDUCTIONS ON BETTER CARS NOW!

- '65 CORVETTE, automatic transmission, power windows, power steering, power brakes. Nice. \$2195
- '69 MUSTANG 2-dr. hardtop, V-8 automatic transmission, radio and heater . . . \$1995
- '68 MUSTANG convertible, V-8 automatic, radio and heater \$1795
- '68 CADILLAC 4-dr. hardtop, fully equipped, air condition \$3495
- '67 CAMARO 2-dr. hardtop, V-8 automatic, radio and heater \$1495
- '68 MUSTANG 2-dr. hardtop, 6 cylinder, 3 speed, radio and heater \$1495
- '69 DODGE Polara 4-dr. hardtop, automatic, air condition, power steering \$2295
- '66 CHEVROLET Impala super sport, V-8 automatic, radio and heater \$1195
- '65 CHEVROLET Impala 4-dr. V-8 automatic, air condition \$895
- '67 BUICK Special 4-dr. automatic, radio and heater \$1395
- '67 PLYMOUTH 4-dr. V-8 automatic, full power. \$1095
- '70 PONTIAC Catalina 2-dr. automatic, power steering, power brakes, air condition . . . \$3195
- '69 OLDSMOBILE "98" 4-dr. automatic, power steering, power brakes, air condition . . . \$2995



Not as extravagant as it looks.



Mag-style wheels, sleek fastback design. Detailings that look like hand-craftsmanship. No wonder everybody thinks the MGB/GT is an extravagant car.

But it isn't. License fees are generally lower. And the MGB/GT's resale figure is usually higher because there's no styling or mechanical obsolescence built in. Even gas mileage of 25 miles per gallon is not unusual.

Beyond practicality, though, comes performance. And here, too, the MGB/GT excels. With a 1798 c.c. twin-carb engine, rack-and-pinion steering, racing-type suspension, and front disc brakes.

For comfort's sake, you get orthopedically contoured reclining bucket seats, extra padding on the doors, and pile carpeting, plus lots more luxury features.

So don't judge the MGB/GT by its looks. Not if you're looking for a practical car. Because the MGB/GT proves a car can be practical and look extravagant. Drop into the showroom and see for yourself.

East Carolina's Largest Sports Car Center
HARMON-ROWLAND
429 S. Wilmington 833-5733

GOOD SELECTION USED VOLKSWAGENS

Floyd Stevens
Hamp Hamilton
Ray DeBerry

Dave Davis
Jack Weathersby
Hurley Redd

Charlie Bell

HARMON Volkswagen Inc.
2421 Wake Forest Rd. 828-0901

AT COURTESY YOU'LL ALWAYS FIND QUALITY SERVICE & SATISFACTION

THE DEVIL MADE ME DO IT

WHAT'S YOUR EXCUSE?



LOOK WHAT DODGE DID . . . Combined the Best of Several to Build This Fantastic 1971 Demon

GREED — You'll Think so When You See It!
GLAMOUR — You'll Know So When You Drive It!
TEMPTATION — The Cost Gives It to You!
Prices Start as Low As \$2255 Plus Tax

Courtesy Dodge

LOW DOWN PAYMENT — EASY ON-THE-SPOT FINANCING.

NEW CAR SALES 828-7461 716 DOWNTOWN BLVD. SERVICE 828-7484
USED CAR SALES 828-2921 RALEIGH, N.C. PARTS DEPT. 828-7485

AT COURTESY YOU'LL ALWAYS FIND QUALITY SERVICE & SATISFACTION

LAKESIDE MOTORS, INC.
Model Used Cars
Trade-In. Any Kind of Car.
Before You Buy

'65 CADILLAC Sedan Deville. 4-Dr. HT. Black. Fully loaded.

'67 FURY III—Air, convertible, clean. P.S., P.B., AT, V-8.

'67 RIVIERA—Air, PS P. E., vinyl roof, low mileage, factory warranty.

SEE ED GILL, Sales Manager

