

National Association Of University Women Meet

The Raleigh Branch of the National Association of University Women recently held its January meeting at the Tarboro Road Community Center.

The meeting opened as the president, Lois Caudle, extended a cordial welcome. Chaplain Elizabeth Jordan led the devotion which encompassed a commemoration of Martin Luther King. Ms. Virginia Swayze read the litany followed by a spiritual prayer by Ms. Jordan. Ms. Estella Curry read a Salute To King, which contained information about King's life and his various accomplishments.

The business session opened with Ms. Mildred Goodson, secretary, reading the minutes which were approved. Ms. Winnie Lacewell, treasurer, distributed and explained the proposed budget for 1991 which included among other contributions, an addition of \$300 for the UNCF.

Ms. Gaybelle Harris, first vice president and chairperson of the membership committee presented one application which was approved. The applicant is Ms. Omega Walker, 2801 Foxgate Drive, Raleigh.

The induction ceremony for new members will be performed at the February meeting.

Dr. Arcelia Jeffreys, second vice president and chairperson of Founders' Day activities reported that program plans will be finalized at the February meeting. Founders' Day will be observed in March.

One of the greatest challenges facing the National Association of University Women is to improve the educational standards of our youth. The Raleigh branch is focusing its

attention on developing support services by expanding its volunteer activities. Several members are completing plans to work one or two afternoons per week at the Chavis Community Center in reading enrichment and homework sessions. Other members have voiced an interest in adopting a school project, the Wake Central Optional School, and working for one or two hours per week during the regular school schedule.

The refreshments served during the social period were delightful.

The hostesses were Ms. Etta Solomon, chairperson; Ms. Erma Tyson, Ms. Mildred Richardson, Ms. Merlyn Lytle, Ms. Susie Daughtry, Ms. Lillian Downing, and Ms. Mildred Goodson. The door prize, donated by Ms. Virginia Swayze, was won by Ms. Mildred Goodson.

Membership at this meeting included Ms. Lois Caudle, Ms. Della Clemons, Ms. Estella Curry, Ms. Susie Daughtry, Ms. Lillian Downing, Ms. Ruby Dunston, Ms. Mary Goode, Ms. Mildred Goodson, Ms. Gaybelle Harris, Ms. Naomi Horton, Ms. Arcelia Jeffreys, Ms. Elizabeth Jordan, Ms. Winnie Lacewell, Ms. Merlyn Lytle, Ms. Ella Perry, Ms. Teiza Perry, Ms. Etta Solomon, Ms. Virginia Swayze, Ms. Erma Tyson and Ms. Annie Ellerbe, reporter.

RAINBOW

Each one of us needs principles in which we can believe. It's not so much the getting if we don't know how to share. For only love can turn the rain to rainbows everywhere.

Grace E. Easley



A PRIME MINISTER'S WELCOME — Tommy Watkins, president of the National Newspaper Publishers Association (NNPA), at left in photo A, is welcomed along with more than 200 black publishers and their guests to the Bahamas by Sir Lynden Pindling, Prime Minister of the Bahamas, for the Association's Mid-Winter Conference. With the theme, Empowering Our Newspaper and Our Organization, Charles N. Jamison, executive vice president, Jamison and Leary Advertising, Inc., speaks to the advertising workshop sponsored by Kraft General Foods. In another spirited discussion, Ibn Sharrief, publisher of the Tri-City Journal in Chicago, stands to

make a point during the 3-day session at the Crystal Palace Resort. While the working sessions were well-attended, there were moments for relaxation like when Dorothy Leavell, at left, publisher of the Gary (IN) Crusader, enjoyed a laugh with John Hollomon, publisher of the Herald Dispatch in Los Angeles and Sonceria (Sonny) Messiah, publisher of the Houston (TX) Defender. William Garth, publisher of the Chicago Citizen Newspapers, at left, joins Bob Begle, publisher of the Philadelphia Tribune, in the Island Fantasy Cruise, sponsored by Philip Morris Companies, and Schieffelin and Somerset Company, on the final day of the conference.



BUSINESS AWARD—The Eta Sigma Chapter of Phi Beta Sigma recently honored Jimmy Clarke II, with their Business Person of the Year Award. Clarke is currently in his 13th year of insurance business and owner of Jimmy Clarke State Farm Insurance Agency. Clarke has been a member and an active one of Kappa Alpha Psi Fraternity, Inc. since 1974. Fledged at Eta Psi Chapter in Greenville. The award was given by Phi Beta Sigma Fraternity, Inc. As the 1990 Bigger and Better Businessperson Awardee, Clark has eight years with a total of thirteen in the insurance industry. He attended East Carolina University from 1973-1978, and graduated with a degree of Bachelor of Science in Business Administration, concentration in Management. He is a member of Martin Street Baptist Church since 1984 and married to the former Veronica D. Washington of Virginia. They have two sons, Javen, age 6 and Jarrett, age 5. Presently Clarke is involved with the Kappa's in working with young black men that have identity problems and through the Raleigh Parks and Recreation Department, coaching basketball.

Howard Univ. Receives \$3 Million Grant

WASHINGTON, D.C.—The National Institute of Allergy and Infectious Diseases recently announced that Howard University has been awarded a three-year, \$3.78 million grant to develop a program to do AIDS clinical trials.

Dr. Wayne L. Graves, associate professor of medicine at the Howard College of Medicine and former chief of infectious disease at Howard University Hospital, is principal investigator for the project. He has been at Howard University Hospital since 1984 in the division of infectious diseases doing research on AIDS.

The focus of the project is the development of the necessary infrastructure at Howard University to conduct AIDS clinical trials and experimental therapies for minority AIDS patients.

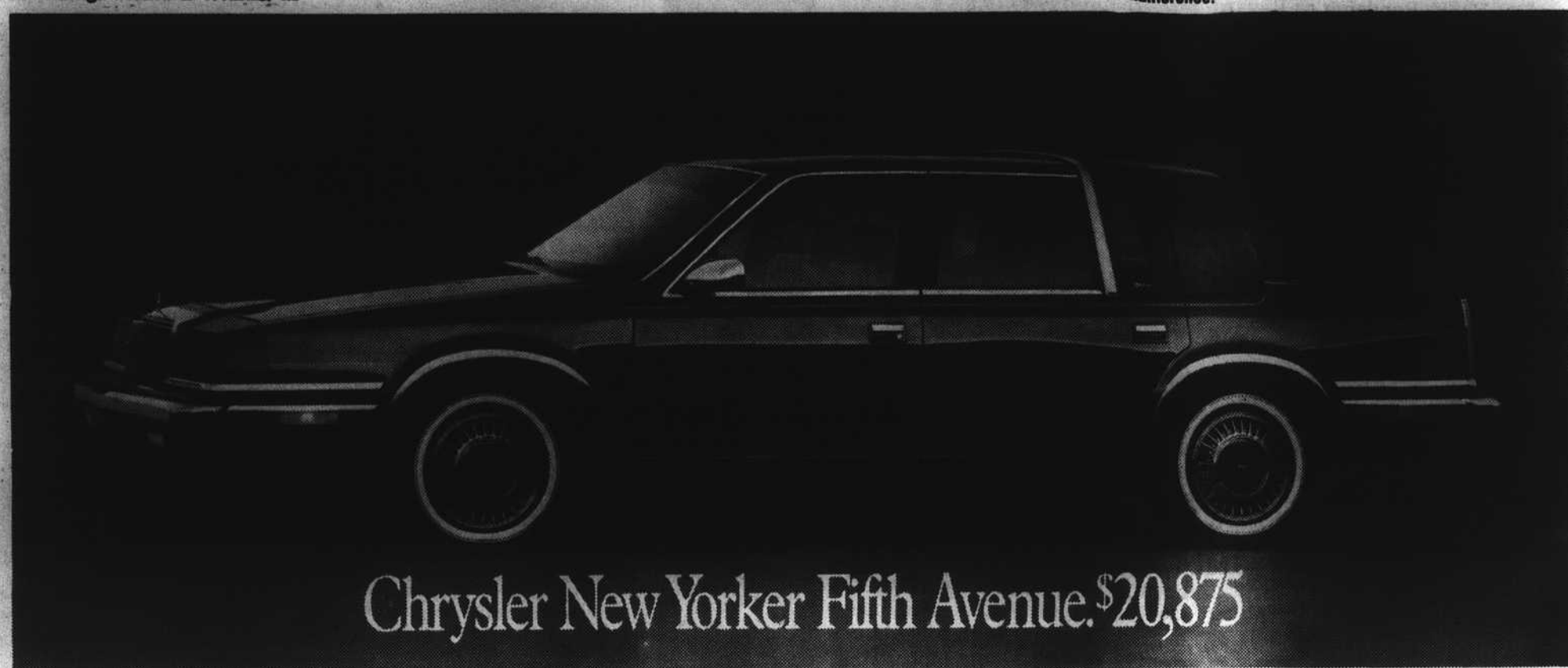
Data show that minorities, primarily blacks and Hispanics, now constitute about 44 percent of the 157,525 cases of AIDS reported in the United States since the epidemic began in 1981. African-Americans comprise 12 percent of the total U.S. population, but 26 percent of the patients diagnosed with AIDS are black. Hispanics make up less than eight percent of the population, yet they account for approximately 15.5 percent of the AIDS cases.

The racial imbalance is even more pronounced among minority women and children with AIDS. Women comprise about seven percent of all AIDS cases nationally; however, almost 70 percent of the diagnosed female AIDS cases are black and Hispanic. Black and Hispanic children together make up 74 percent of the children with AIDS in the United States.

Dr. Louis W. Sullivan, secretary of the Department of Health and Human Services, recently announced awards not only to Howard University, but also to the University of Hawaii and the University of Puerto Rico "to increase the participation of HIV-infected minority individuals in our research efforts."

Dr. Anthony S. Fauci, director of NIAID, said, "Clearly, HIV infection and AIDS in minorities pose special and urgent challenges for NIAID in our efforts to combat this disease. HIV infection is steadily increasing in minorities, yet minority racial and ethnic groups and minority-focused concerns have been under-represented in AIDS clinical research. We believe these grants will help address these important issues."

NIAID is the lead institute for AIDS research at the National Institutes of Health, which is an agency of the U.S. Department of Health and Human Services. It is responsible for conducting, supporting and coordinating many aspects of federally sponsored research on HIV infection and AIDS in the United States and around the world.



Chrysler New Yorker Fifth Avenue. \$20,875

Introducing Luxury with the \$9,500 Advantage.

Will Cadillac owners ever forgive us? When you compare their Sedan DeVille to our Chrysler Fifth Avenue, it's amazing how much luxury these two cars have in common. Until you get to the base sticker price. That's where Chrysler has the advantage. The \$9,500 Advantage!

But we don't just protect you from a high price. We also protect you with the

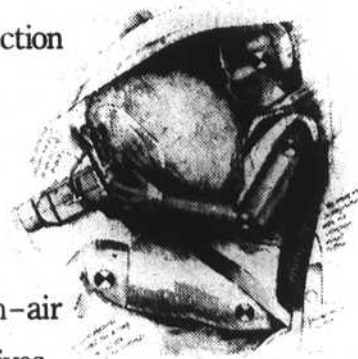
best owner care you get from any luxury sedan. Our exclusive Crystal Key warranty!†

The highest quality rating in its class.

With its wealth of luxury features and engineering advantages, it's no wonder a recent independent buyer survey rated Fifth Avenue the highest quality car in its class. In fact, the Consumer Attitude Research Company rated it #1 in every single category when it came to quality. And that included fit, finish, overall quality of workmanship and freedom from noise.*

Perhaps the most important engineering advantage that you'll find on any car, however, is the driver's air bag. It's included as standard equipment in every Chrysler brand car. When used with the safety belt, it is the most effective

driver protection you'll find. And letter after grateful letter has told us one thing for certain—air bags help save lives.



There is no luxury without engineering.

Fifth Avenue is engineered with one advantage after another. And if you're still thinking of buying a Cadillac Sedan DeVille, we know 9,500 advantages to keep in mind. The \$9,500 Advantage.

To buy or lease, please call 1-800-4A-CHRYSLER



Advantage: Chrysler.

	BASE CAR WARRANTY Covers entire car except normal options	MAJOR COMPONENTS PROTECTION	POWERTRAIN/ENGINE PROTECTION	OUTER BODY RUST-THROUGH PROTECTION
CHRYSLER NEW YORKER FIFTH AVENUE	5 YEARS/50,000 MILES	5 YEARS/50,000 MILES	7 YEARS/70,000 MILES	7 YEARS/100,000 MILES
CADILLAC DEVILLE	4 YEARS/50,000 MI.	4 YEARS/50,000 MI.	4 YEARS/50,000 MI.	6 YEARS/100,000 MI.
LINCOLN CONTINENTAL	4 YEARS/50,000 MI.	4 YEARS/50,000 MI.	4 YEARS/50,000 MI.	6 YEARS/100,000 MI.
LEADS US AWAY	4 YEARS/50,000 MI.	4 YEARS/50,000 MI.	6 YEARS/70,000 MI.	6 YEARS/UNLIMITED
HILLS BOVCE COMMUNE	3 YEARS/UNLIMITED	3 YEARS/UNLIMITED	3 YEARS/UNLIMITED	3 YEARS/UNLIMITED
BUICKS ON WHEEL	4 YEARS/50,000 MI.	4 YEARS/50,000 MI.	4 YEARS/50,000 MI.	4 YEARS/50,000 MI.

†1991 model base sticker price comparison to Cadillac Sedan DeVille. Standard equipment levels vary. ††See 5/50 and 7/70 (powertrain) limited warranties at dealer. Restrictions apply. *Consumer Attitude Research, Inc., 1990 Second Quarter Study. Fifth Avenue Classification: Basic Large Segment. Cadillac Sedan DeVille: Large Luxury Segment. Based on warranty, pricing & C.A.R. information at time of printing.